

Illinois State Geological Survey

July 22, 1930.

(1827.7 $\frac{1}{2}$ 9) • 23h

Abandoned strip mine s. side of road.

4' Sh. gray to yellowish gray, weathered and broken with abundant fragments of ironstone concr.

4-5" Sh. gray to dk. gray, bedded, thinly with beds of darker shale interbedded and plant impressions on bedding surface

3 1/2" Coal

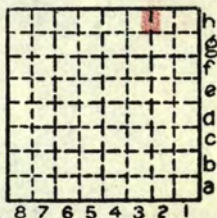
1" Charcoal - not like blue band) 33" on s. side
at all) of pit.

9 1/2" Coal)

1/2" Clay, yellow gray, non calc.

20" Clay, gray non-calc. somewhat bedded breaking out in irregular fracture with some rust on fracture surfaces, and carbonized plant or stem remains on bedding surfaces.

On dump of shaft mine about 100' s. of pit are fragments of ss. slate and ls. Slate is similar to that collected over #6 s. of Sheffield. Evidently shaft went down to #6 while strip mine is in #7 because no ls., sh. nor ss. is found over coal in pit. Interval is not great enough for ss. not ls. to come in above coal at shaft. Black slate has fossils - pelecypods and conodonts.



By S.E. Ekblaw Date 1930

Quadrangle Annawan

County Bureau Sec. 27 T. 16N R. 6E

