



Form 180

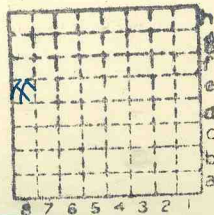
R - F

HERRIN

Luster & Son

L 4

393



Sec.	13
T.	1 <sup>N.</sup> <sub>S.</sub>
R.	9 <sup>E.</sup> <sub>W.</sub>
Index No.	

Mine Index 3583



Mine originally operated by: (1)

Date

L-4

Original name or number:

Illinois Coal Report

p.

LATER OPERATORS

Date	Operator	Name or No.
2 1934	M.B. Watland	
8 1935	C.R. Luster & Son	
4		
5		
6		
7		
8		
9		
10		
11		
12		
13		
14		

\* Also owners

#See ownership sheet

Railroad, Wagon, Idle, Abandoned **Strip Mine**

**LOCAL MINE**

IDENTIFICATION

L-4

County No. 393

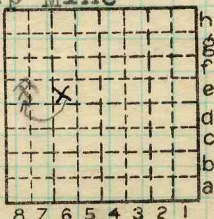
Coal No.

6

Quad. Waterloo

Part 1

County St Clair



Sec. 13

T. 1 S.

R. 9 W.

Index No.

COAL MINE OPERATOR

1313 E8



( Sheets ) COAL PRODUCTION ( Sheet )

Period						Tons		
Mo.	Day	Year	Mo.	Day	Year			
1	1	1934	12	31	1934	2	144	local
1	1	1935	12	31	1935	4	406	"

SUMMARIES

No. to No.

Railroad, Wagon, Idle, Abandoned

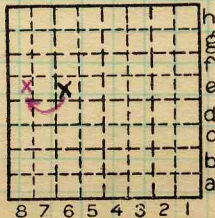
IDENTIFICATION **L-4**

**LOCAL MINE**

County No. **393** Coal No. **6**

Quad. **Waterloo** Part **1**

County **St Clair**



Sec. **13**

T. **1** S.  
R. **9** W.

Index No. **1313 8e**



LOCATION AND ELEVATION

Location: side R. R.  
 side R. R.  
 side Highway No.

on top. map Location sheet

Elevation: Method, 1. Est. ( ) \_\_\_\_\_ ft.  
 2. Inst. (kind \_\_\_\_\_) \_\_\_\_\_ ft.

By	Data sheet
<b>DEPTH</b>	
Authority	To coal <u>28'</u> ft.
Authority	Rail to rail _____ ft.
	Top of coal above rail. (Est. Rule) _____ ft.
	To coal <u>20-25'</u> ft.
<b>ALTITUDE OF TOP OF COAL</b>	
By estimated data _____	
By instrumental data <u>P.T. (W.B. Roe)</u>	<u>527.5</u> ft.

Thickness  
 Max. in. Min. in. Aver. in.

GEOLOGICAL DATA

Mine notes, date \_\_\_\_\_

Coop No. Pyr. inv. Coal Ash inv.

CHEMICAL DATA

Analyses	Face	U. I.	B. M.	Others
Car	U. I.	B. M.	Others	
Org. Sulf	U. I.	B. M.	Others	
Ash fusion	U. I.	B. M.	Others	
Ash anal.	U. I.	B. M.	Others	
	U. I.	B. M.	Others	

Classification

Misc. tests: Coking. Cleaning Boiler

Published descriptions:—

Railroad, Wagon, Idle, Abandoned strip

**LOCAL MINE IDENTIFICATION**

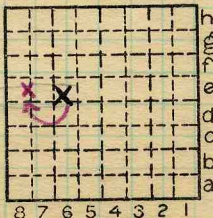
County No. 393

Quad. Waterloo

County St Clair

Coal No. 6

Part 1



Sec. 13

T. 1 S.

R. 9 W.

Index No.

1313EB

COAL MINE LOCATION AND DATA