

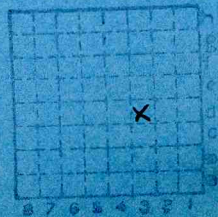


Form 180 Blue

Assumption C. & M.C.
~~Victory Coal Co~~

Mi. # 21

69



Sec.	2
T.	12 ^{N.}
R.	1 ^{E.}
Index No.	

✓



ILLINOIS GEOLOGICAL SURVEY, URBANA

From: Coal Report, 1894, p. 80

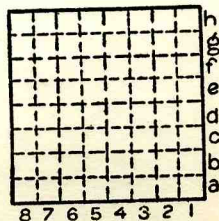
Developments. - "The Assumption Coal and Mining Company, Christian County, is developing a seam which is about 15 feet above the one that it has been working. Both seams will be worked and both have the same general thickness and appearance."

Co # 69

By.....Date.....

Quad.....Part.....

County Christian.....



Sec. 2

T. 12	N.
R. 1	E.

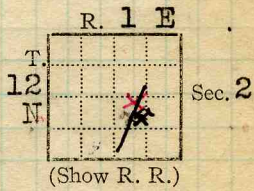


Town, Assumption
Local Authority,

Surface alt., 639.8 ft.
Depth to coal, 1001 ft.
Alt. top coal, -361 ft.
Thickness: Av. 36 in.
Max. 42 in., Min. 24 in.

Level: Auth., Mine notes
J.S. Young
Method, Planetable 1929

R. R., I.C.



Location: authority, Mine Notes
Co. verified loc. w. of RR.

Aug #7 - 1887 - 1924 Operator Gen'l. Coal Rept #69 Mine Name or No.

Assumption Coal & Mining Co.? No. 1
Assumption

Successor to
Date
Succeeded by Victory Coal Co.
Date
Succeeded by
Date

PRODUCTION.

									U. S. No.
19 <u>26</u>	<u>22708</u>								
1927									
1928									

Adle *
1930 #1

Geol. Notes? Yes Coop. No. 21 Coal secs.? Yes
Analyses No. 5205, 5206, 5207, 5230, 5229, 5231, 5295
#9 409, GEN'L COAL REPT. 69

Examined by _____ Ref. _____
Coal bed name: Local SHIPPING MINE Survey No. 1 & 2
County Christian Index No. 1602.64

K. - ACTIVE SHIPPING OR LOCAL COAL MINE.
County #69



Mine originally operated by: (1)

Date 1887

Assumption Coal Co.

Original name or number:

Illinois Coal Report 1954 p. 74

Assumption

LATER OPERATORS

Date

Operator

Name or No.

2 1929 Silver Creek Coal Co.

3 1930 Victory Coal Co.

} No record

4

5

6

7

8

9

10

11

12

13

14

*Also owners

#See ownership sheet

SHAFT Railroad, Wagon, Strip, Idle, Abandoned

1004'

IDENTIFICATION

7'

County No. _____

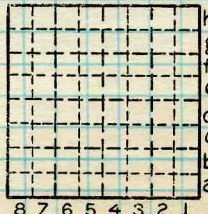
Coal No. 1 & 2

Coal Report No. _____



Quad.

County **CHRISTIAN**



Sec.

T.

N.
S.

R.

E.
W.

Index No.

COAL MINE OPERATOR

ILLINOIS COAL MINE NOTES

TOWN *Assumption* T. 12N R. 1E S. 2 SW/4 *Christian* CO.
 COAL BED # *2* DATE *Sept 29 08* COLLECTOR *Jon Udden*
 OPERATOR *Assumption coal & mining Co* MINE # *1* ~~1602~~
 HEAD OFFICE *Assumption Illinois* 1602
 CAPACITY *500* MARKETS, FRT. *Lawa Minn., Wise, Okla.*
 ENTRANCE *A shaft 990'* Altitude *-350' of coal*
 CAGE *Jenckan type hand dump* ENGINES *itch field 24x36*
front motion. DRUM *Wooden 10'*
 SCREENS *Shaker 3 1/2" 1 1/4" 1/2"*

STORAGE

VENTILATION *itch field 14' diam Elev. 644 Base Map*
 GAS, SOURCE *Some gas in coal but most occurs in roof.*
 COAL THICKNESS, AV. *37* MAX. *63* MIN. *10* ELE. *350 below sea level* FT.

SECTION LOCATED *2nd Right off main Upper Vein entry*

No.	Top	In.	No.	In.
1	Coal	35 1/2	7	
2	Sulphur	1/8	8	
3	Coal	7 3/4	9	
4			10	
5			11	
6				

TAPE 43"

NOT SHIPPED NOT INCLUDED *in* CAN *in* SAMPLE *U 281*

flue eng. Co U# 280 tag 44x
 PHYSICAL PROPERTIES BY NOS. *Std. bk. bright lustre with bright bands 1/8" - 1/4" & dark bands 1/2" - 1"* Very little Sulphur present

ROOF *grayish colored shale 6'+*
 FLOOR *fire clay 3'+*
 DIP *SE* CLEAT
 FAULTS, ETC. *One large fault NE-SW with many minor faults*
 MACHINES *hand mired undercut.*
 HAULAGE *Woodman 7 1/2 ton (2)* CARS *Wooden 1 ton*

DRAINAGE *dry*
 WORKING SYSTEM *longwall*
 ENTRIES, MAIN *10'* CROSS *8'-10'* ROOMS
 PILLARS, MAIN CROSS ROOM
 DRAWN TIMBERS

Rutledge N.B.6-P27
 Note also: Variation in coal, impurities, roof, structure.
 Collect records, analyses, fossils. Note land values, etc.
Lab. # 1869 USED IN COOP. REPT. 1912. 1602

The cover ~~is~~ is at ~~the~~ end
of ~~the~~ from 0 - 26' below ~~the~~ ~~top~~

~~1602~~

Bulletins

Silas A. Shaper Genl Mgr.

Thomas H. Devlin Mine Mgr.

1602

USED IN COOP. REPT., 1912.

1602



COAL MINE NOTES.
CONTINUED.

Christian.
 OPERATOR *Assumption Coal and Mining Co.* MINE #1 **1602**
 ENTRANCE *Shaft.* NAME OF COAL BED #2, upper seam.
 ELEVATION THICKNESS OF COAL
 DEPTH TO FLOOR *990* MAX. MIN. AV.
 ALTITUDE OF COAL *350*
 LOCATION OF SECTION *Face Main heading.*

No.	SECTION.	In.
1	<i>Coal</i>	<i>48</i>
2		
3		
4		
5		
6		
7		
8		
9		
10		
11		
12		
<i>Tape</i>		<i>Total</i>

	SECTION
	Feet
SAMPLE No.	
CAN No.	
CONDITION	
GROSS WEIGHT	
TIME EXPOSED	
NOT SHIPPED	
NOT INCLUDED	

PHYSICAL PROPERTIES BY NUMBERS

*Coal clean, no bands. Coal is black and woody, Black coal
 Interval between lower and upper vein varies from 2' to 25'.
 Both seam are worked by long wall advancing, but only a
 small part of the upper seam is worked as it is thin in places.*

ROOF
 FLOOR
 DIP

FAULTS, ETC.

GAS

*Lab Nos
409-410*

USED IN COOP. REPT. 1912.

COLLECTOR *Rutledge*

REFERENCE *N.B.G.P.29.*

DATE **1602**
1602



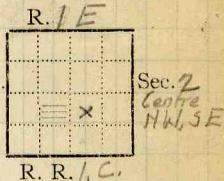
COAL MINING INVESTIGATIONS
COOPERATIVE AGREEMENT

Mine Name or No., #1

1/2 mile South from Depot Assumption.

Operator, 1912 Assumption Coal & Mining Co. 12HT.

Operator, 191



Entrance, Shaft Elev., 644 ft. { above,
Depth to bottom coal, 1004 ft. { below,
Alt.

SURFACE DATA.

A. Topography Flat.

See

B. Surficial materials. (1) Character

(2) Thickness, (3) Effect on mining and shaft-sinking, of former drainage lines, underground water strata, etc.

C. Outcrops, (1) Character,

See

(2) Structure,

See

(3) Fossil horizons

See

Collection No.,

See

(4) Evidences of subsidence,

See

D. Note collection of mine maps, drill records and shaft logs.



See drill record sheet.

E. Notes on surrounding area,

Frank Peabody drilling around Pana.

Write for map

Log of escapement shaft in files. Depth discordant with reported depth.

See

Coal bed name: Local, #1 + #2

Survey #1 + #2

Collector, RD White

State No. 1602 63

Mine, #1 Assumption

Co. Christian Co-op. No. 21



UNDERGROUND DATA (cont'd.)

K. (5) Physical character of coal in benches,

(a) Relative hardness, *Hard.*(b) Lustre, *Bright*(c) Fracture, *Blocky.*(d) Texture, *Banded*

See #14 #2

(6) Impurities in coal, other than bedded,

(a) Kind, *Sulphur*

(b) Position and persistence,

Irregular

(c) Rejected,

Yes.

Ease of separation,

Difficult

See

L. Floor: (1) Material *Fire Clay*(2) Thickness *Unknown Have dug 4' in it.*(3) Variation *Fairly constant.*

(4) Note character, condition, tendency to heave, relation to undercutting, commercial value.

Floor, a light gray soft fire clay, unctuous, has contains iron concretions and a few plant remains.

See

(5) Clay sample No.

Location,

Clay sample promised.

M. Stratigraphy

(1) Fossiliferous horizons underground,

Collection No.

Location,

N. Notes on effect of deep drilling in coal mine areas.

See

Collector, *KDW*

Coal #1

State No. **1602**Mine, #1 *Assumption*Co. *Christian*Co-op. No. *21*



UNDERGROUND DATA (cont'd.)

K. (5) Physical character of coal in benches,

- (a) Relative hardness, *Hard*
 (b) Lustre, *Bright to dull.*
 (c) Fracture, *Blocky.*
 (d) Texture, *Solid to banded.*

See #2 + #3

(6) Impurities in coal, other than bedded,

- (a) Kind, *sulphur*
 (b) Position and persistence,
Irregular

(c) Rejected,
*Yes.*Ease of separation,
Difficult

See

- L. Floor: (1) Material *sandstone*
 (2) Thickness *Average 4'0"*
 (3) Variation *Fairly constant.*

(4) Note character, condition, tendency to heave, relation to undercutting, commercial value.

Floor a banded gray and white sandstone filled with plant roots.

See

(5) Clay sample No.

Location,

M. Stratigraphy

- (1) Fossiliferous horizons underground,

Collection No.

Location,

N. Notes on effect of deep drilling in coal mine areas.

See

Collector, *KDW*Coal # *2*State No. *1602*Mine, # *1* *Assumption* Co. *Christian*Co-op. No. *21*



INDEX

K5

Section

sampled

4th West Entry - 4510' from shaft.

Coal #1

1. Dark gray sandy limy shale (Blue Rock)
2. Dark gray granular limestone, full of calcite facets, (Caprock) 12"
3. Black carbonaceous shale full of plant remains 0'-3"
4. Coal is hard, has a bright banded appearance. Contains considerable ~~large~~ coal in thin and thick bands though mostly thin. Has characteristic partings of mother coal. Calcite very thin along cleavage planes. The lenses of sulphur, generally occur from the middle to the bottom of the bed, though occasionally they occur in the top. The coal is hard, and pops off the face when struck with a pick. 2'-5"

Dip N 40° W

" N 60° E

Section

1st Right - 4th West.

Coal #1

K5

1. Dark gray limy shale, As shale breaks when coal is removed, planes of slip at various angles are developed. (Blue Rock)
2. Brownish gray limestone, filled with calcite facets. Bottom 2" of limestone filled with coal streaks. No sharp line between two, one grades into the other. 12"
3. Coal is bright and hard, and has a more banded appearance than previous section. Glance coal is in thick bands. Mother coal partings thru it. Calcite in thin plates. 1'-1"
4. Parting, is not persistent over entire mine
5. Coal mostly dull, small number of thin bands of glance coal scattered thru. Sulphur lenses 1" to 2" thick 1'-7"
6. A bone coal in appearance practically no glance coal in it. 0'-7"

cut #2

Collector KDW

Coal #1

State No. 1602

Mine #1, Assumption

Co. Christian

Co-op No. 21

X.—EXTRA SHEET No. 1



Index

K5

Section (Cont)

Note: Coal breaks first to parting, then from parting to root. Sulphur lenses not in large amount.

5. Floor a dark gray sandy shale, bally, contains plant remains. Heaves as it air slacks.

Cleat. N42°W

N50°E

Note coal has to be shot at times to bring it down.

Section

1st Left - 19th Entry

Coal #1

- 1 Very limy shale (Blue Rock)
- 2 Crystalline limestone (Cap rock)
- 3 Coal is bright at the top, becoming duller and finally dull at the bottom. Glance coal in rather thin bands most of which are towards the top, only a few towards bottom. Mother coal in partings and thick layers thru entire bed. Sulphur in lenses in top and bottom of coal. Bed rather soft 3'-6"
- 4 Jack, a brownish black carbonaceous shale 0'-4"

Section Coal #1

- 1 (Blue Rock) very black and shaly, practically a black slate
2. (Cap Rock) very crystalline limestone 0'-6"
3. Coal #1 24"
4. Bone Coal (see spec) 8"

Section

Room #8 - 2nd Left - off #7 Entry Coal #2, Face

- 1 Coal bright, hard. Mostly dull coal, very uniform. Glance coal in bands of varying size. Coal has a solid uniform appearance from top to bottom 3'-3"
- 2 A carbonaceous shale, pencil case in bottom 2"

collector KDW

Coal #1 + #2

State No. 1602

Mine #1 Assumption

Co. Christian

Co.-op. No. 21

X. Extra Sheet No. 2



Index.

Roof Coal #1 (cont.)

I Planes of breaking N20°E, 74°; N70°W, 73°.

Roof Coal #2

The roof of coal #2 under normal conditions is a slightly limy, black, carbonaceous shale; with a mottled sandstone above it. This sandstone which has waves of carbonaceous matter scattered thru the grayish white sand, has a spotted, or mottled appearance. The sandstone at times due to erosion is deposited next to the coal forming the roof. In such cases, the coal is reported dirtier, and slightly inferior in quality to that under the slate roof.

Section. Air Course from 4th West to Top Seam.

1. A micaceous, fine grained, argillaceous sandstone, weathers to a muck on exposure on the surface to air and water.
2. Black shale +
3. Coal #2. 5'-3"

The slate varies in the amount of carbon, the color running from a light gray to a black. It is also brittle.

Section from Coal #1 to Coal #2

1. Coal #1
2. Cap Rock 1'-0"
3. Dark limy shale (Blue Rock) 7'-0"
4. Grayish ^{white} fine grained slightly micaceous sandstone 4' 0"
5. Carbonaceous sandy shale 0'-2"
6. Coal #2

Distance between coals from top of one to top of other 26',

collector KDW
 Mine #1 Assumption
 X Extra. Sheet No. 4

Coal #1 #2
 Co. Christian

State No. 1602
 Co-op No. 21



Index

K5

Section

Face Main 7th Entry. Coal #2

1. Coal hard banded mostly dull. Glance coal in bands up to $\frac{1}{2}$ " thick. Comes out in blocks. (called a splint block coal). Uniform in quality from top to bottom. Coal does not soil the fingers. Mather coal in small amount.

Very blocky

2' - 10"

Cleat N45°W Face

" N40°E

Roof a mottled sandstone, carbonaceous parting 1" thick between it and coal.

Floor sandstone shale parting 2" thick between coal and floor.

I

Roof Coal #1

The normal roof is a hard dark gray, or brownish gray, granular limestone, with calcite facets thru it, occurs next to the coal, Generally there is a carbonaceous shale parting between it and the coal. This limestone is equivalent to the cap rock of the Rock Island field. Above the cap rock occurs a dark gray fine grained limey shale, or argillaceous limestone. It varies considerable in the amount of lime ^{and carbon} contained becoming at times a carbonaceous shale.

Lenses of limestone also occur thru it.

It is the equivalent of the (Blue Rock of Rock Island) When coal is mined; shale settles along planes making an angle of 46°, 54°, 83°, 87° etc. with the horizontal. Above Blue Rock, black slate.

Section

1. Dark gray limey shale, slip planes irregular, about 87°
2. Hard crystalline cap rock

Coal #1

24"

collector KDW

Mine #1 Assumption

X. Extra Sheet No. 3

Coal #1 & #2

Co. Christian

State No 1602

Co.-op No. 21



Index

I



Sketch showing Black Shale Lensing in between Sand stone and coal.

Note. Slate is massive not sheety.

When coal is mined, the black shale crushes along approximately parallel planes, making about 55° with the horizontal.

Section Main Air Way between Top seam and #16 Entry.

1. Very black slate badly balled vis. 2'-0"
- 2 Laminated black, and white banded, sandy shale, breaks in squares 1'-0"
- 3 Mottled ss. 5'-0"
- 4 Coal #2

Section Coal #2 Junction of Cross-over to #5 with Main #19 Entry.

- 1 Coal #2
- 2 White and gray banded sandstone, with plant remains & floor coal #2 5'-0"
- 3 Black limey shale with 3" stringer of coal 5" from bottom 3'
- 4 Cap rock 1
Coal #1

Roof #2 Coal is at times a carbonaceous sandstone, that cuts out in long faces bearing $N42^\circ W$, and is bedded in benches with distinct partings between each bed.

collector K.D.W.

Mine #1 Assumption

X- Extra Sheet No. 5

Coal #1 & #2

Co. Christian

State No. 1602

Co-op No. 21



Index

K₃

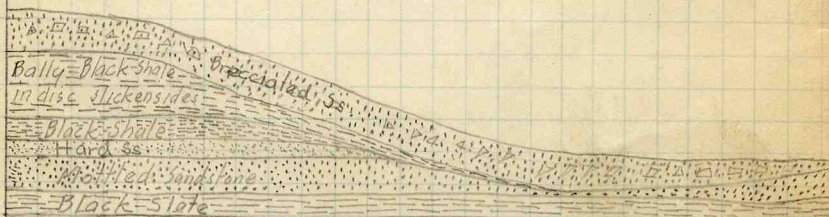
Main Air Course Coal #2 to 16th Entry.
Description of Erosion channel.
Coal #2

An unconformity occurs above the black slate, the normal roof of the coal. The coal is reported to have been good and not affected by the erosion.

The sandstone above the bally black shale cuts the shale down to 6", and both ride down into the mottled sandstone above the roof of Coal #2. The sandstone and black shale are inclined at a sharp angle.

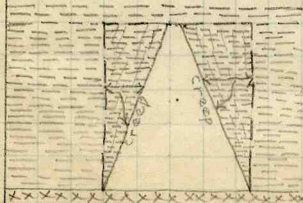
The bally black shale and part of the mottled sandstone is replaced, by a brecciated sandstone. It has the same ripple marked, black scum appearance, ^{as the mottled ss.} with irregular pieces of siliceous limestone and iron concretions thru it.

All the beds in the area affected are full of slip planes.



Coal

Idealized section showing approximate lensing of strata in erosion area. (Exposure poor)
(Vertical scale distorted)



Sketch showing creep of ribs
Dash line, as first driven.
Solid line, present position
Coal #1

Collector KDW

Mine #1 Assumption

X. Extra Sheet No. 6

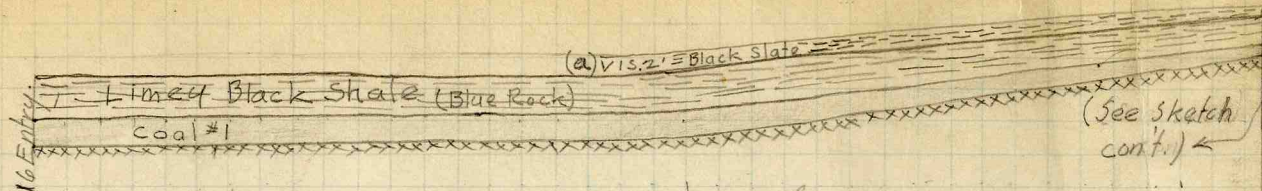
Coal #1 #2

Co. Christian

State No 1602

Co-op No. 21

MOORE'S
NONPAIN
METHODS

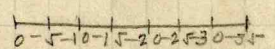


(a). Black Slate massive, specular, with grains of sand, and streaked with lenses of very fine grained white sandstone.
Coal #1 thin out up hill, as does the (Blue Rock). All finally lens out at the top.



Air Course Coal #2 to 16th Entry.
Sketch showing lensing of beds including Coals #1 and #2, over over hill in Air Course.

Note.: The strata thicken towards the dip on both sides of the hill, and the interval between the beds increase.
The faulting is sketched only approximate as the area was heavily cribbed



Index
K3

State No. 1602
Co-op No. 21

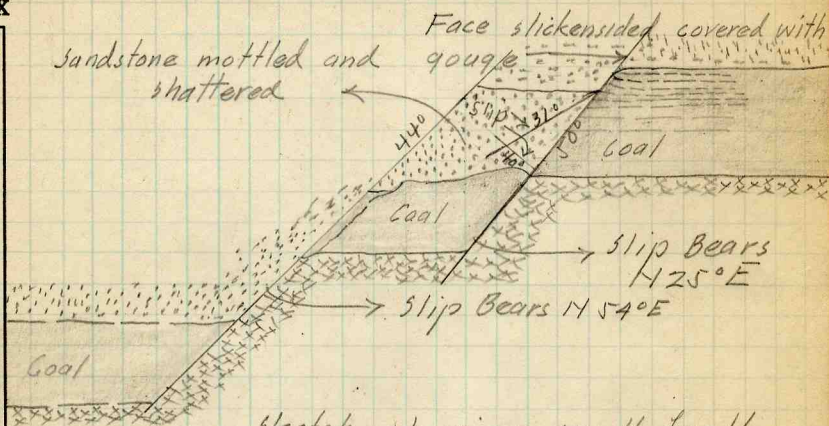
Coal #1 & #2
Co. Christian

Collector KDW.
Mine #1 Assumption
X - Extra Sheet No. 7



INDEX

K3



Sketch showing small fault in coal #2.

Collector KDW

Mine #1 Assumption

X.—EXTRA SHEET No. 8

Coal #1 & #2

Co. Christian

State No. 1602

Co-op No. 21



COAL MINING INVESTIGATION

COOPERATIVE AGREEMENT

Operator, Assumption Coal & Mining Co. Date, July 26, 1912
 Mine, Vol. Located 4 miles* S from Assumption
 Location in mine, 2nd Left off 2nd Right off Main Top Vein ✓
 Total (vertical) depth from surface at point of sampling, 970 ft ✓

In describing the beds and character of the members, note any member that is rejected by the miner. Note all clay and sulphur partings, whatever their thickness. Exclude from sample all clay and sulphur partings $\frac{3}{8}$ inch thick or over (and even those of less thickness if they are rejected at mine or tippie).

SECTION OF BED AT POINT SAMPLED

No.	DESCRIPTION	FEET	INCHES
X1	Roof - black shale Rock top		
2	Coal - Clean - dull & bright bands	3	2
X3	Floor - Black jack - black shale		
4	Coal is very hard near roof		
5	& softer near floor		
6	Coal is very blocky		
7			
8	Roof is grey limestone (P), nodular & full		
9	of white lenses		
10			
11		133	
12			
13			
14			
15			
16			
17			
	TOTAL,	3	2

Is coal wet or dry? - dry

Time exposed, 0 hours, 30 minutes.

Weight, 25# gross, net.

What are the impurities, and how do they occur? very little hor. dirt streaks
 Occasional pyrite lenses, CaCO₃ & little pyrite on cleat

What are shipped? 2

What are excluded from the sample? 1, 3

Coal bed, No. 2 (Top Vein) ✓

*Direction (N., NE., etc.) †Nearest railway station.

Town, Assumption Mine, No. 1 Co. Assumption Coal & Mining Co.

Sample No. 21A Can No. St. V 25 No. 21 1602

I.—COAL SAMPLE SHEET. Sampler. Nebel & Smith.

Lab # 5205



COAL MINING INVESTIGATION

COOPERATIVE AGREEMENT

Operator, Assumption Coal Mining Co. Date, July 26 1912
 Mine, No. 1 Located 5 miles* S from Assumption
 Location in mine, 1st Left off 2nd Left Main Top Vein
 Total (vertical) depth from surface at point of sampling, 970 ft.

In describing the beds and character of the members, note any member that is rejected by the miner. Note all clay and sulphur partings, whatever their thickness. Exclude from sample all clay and sulphur partings $\frac{3}{8}$ inch thick or over (and even those of less thickness if they are rejected at mine or tippie).

SECTION OF BED AT POINT SAMPLED

No.	DESCRIPTION	FEET	INCHES
X1	Roof-Rock Top-Grey Limestone-Nodular		
2	Coal-clean-hard-bright	2	10
3	very blocky		
4			
5	Floor-black carbonaceous shale		
6			
7			
8			
9			
10	Coal very free from impurities,		
11			
12			
13		144	
14			
15			
16			
17			
TOTAL,		2	10

Is coal wet or dry? - Dry ✓
 Time exposed, 0 hours, 35 minutes.
 Weight, 20# gross, net.

What are the impurities, and how do they occur? - very few dirt streaks

CaCO₃ on Cleat

What are shipped? 2

What are excluded from the sample? 1

*Direction (N., NE., etc.)

Coal bed, No. 2
 †Nearest railway station.

Town, Assumption Mine, No. 1 Co. Assumption Coal
 Sample No. 2NB Can No. ISG 45 No. 2/4 Mining Co.

I.—COAL SAMPLE SHEET. Sampler, Nebel + Smith 1602

Sub #5206



COAL MINING INVESTIGATION

COOPERATIVE AGREEMENT

Operator, Assumption Coal + Min. Co. Date, 7-26- 1912
 Mine, #1 Located 1/4 miles* 5 from Assumption-
 Location in mine, #7 off 2nd Left Main Top Vein
 Total (vertical) depth from surface at point of sampling, 970 ft. —

In describing the beds and character of the members, note any member that is rejected by the miner. Note all clay and sulphur partings, whatever their thickness. Exclude from sample all clay and sulphur partings $\frac{3}{8}$ inch thick or over (and even those of less thickness if they are rejected at mine or tippie).

SECTION OF BED AT POINT SAMPLED

No.	DESCRIPTION	FEET	INCHES
X1	Roof-Grey Nodular limestone		
X2	Coal + Bone-dirt etc. not mined		2
3	Coal - clean-hard-bright	2	10
4	very blocky-cubical fracture.		
5			
6			
7	Floor-black carbonaceous shale		
8			
9			
10			
11			
12			
13			
14			
15			
16			
17			
TOTAL,			0

145

36
2
34
3

Is coal wet or ~~dry~~? Wet
 Time exposed, 0 hours, 25 minutes.
 Weight, 25# gross, net.

What are the impurities, and how do they occur? dirt + pyrite in fine bands near roof - little CaCO₃ on cleat

What are shipped? 3

What are excluded from the sample? 1, 2.

Coal bed, #2

*Direction (N., NE., etc.).

†Nearest railway station.

Town, Assumption Mine, #1
 Sample No. 210 Can No. I.S.G.S. 50 No. 21 1602
 Assumption Coal + Min. Co.

I.—COAL SAMPLE SHEET. Sampler. Smith + Npbel

Lab # 5207



COAL MINING INVESTIGATION

COOPERATIVE AGREEMENT

Operator, Assumption Coal Mining Co. Date, July 30 1912
 Mine, No. 1 Located 4 miles S from Assumption
 Location in mine, Face Main 4th W Entry - Lower Vein
 Total (vertical) depth from surface at point of sampling, _____ ft.

In describing the beds and character of the members, note any member that is rejected by the miner. Note all clay and sulphur partings, whatever their thickness. Exclude from sample all clay and sulphur partings $\frac{3}{8}$ inch thick or over (and even those of less thickness if they are rejected at mine or tipple).

SECTION OF BED AT POINT SAMPLED

No.	DESCRIPTION	FEET	INCHES
X 1	Roof-Limestone-hard		
2	Coal-fairly clean-hard	2	5-
3	Banded alternately		
4	dull & Bright		
5			
6			
7	Floor black carbonaceous shale		
8			
9			
10			
11			
12			
13			
14		248	
15			
16			
17			
TOTAL,		2	5-

Is coal wet or dry? - Dry
 Time exposed, 0 hours, 20 minutes.
 Weight, 15# gross, _____ net.

What are the impurities, and how do they occur? a little mother of coal in hor bands-occasional sulphur lenses

What are shipped? 2
 What are excluded from the sample? 1

*Direction (N., NE., etc.) _____ Coal bed, No. 1 (Lower Vein)
 †Nearest railway station _____

Town, Assumption Mine, No. 1 Coal bed, No. 1 (Lower Vein)
 Sample No. 21D Can No. 57D 37 Assumption Coal Co. 1602

I.—COAL SAMPLE SHEET. Sampler. Nebel & Smith
#5230



COAL MINING INVESTIGATION

COOPERATIVE AGREEMENT

Operator, *Assumption Coal + Min Co* Date, *7-30* 191*2*
 Mine, *#1* Located *1/4* miles ~~5~~ from *Assumption -*
 Location in mine, *1st Left off. 19th - off 3rd West*
 Total (vertical) depth from surface at point of sampling, *ft. (Lower vein)*

In describing the beds and character of the members, note any member that is rejected by the miner. Note all clay and sulphur partings, whatever their thickness. Exclude from sample all clay and sulphur partings $\frac{3}{8}$ inch thick or over (and even those of less thickness if they are rejected at mine or tippel).

SECTION OF BED AT POINT SAMPLED

No.	DESCRIPTION	FEET	INCHES
X1	Roof - Limestone - Grey		
2	Coal - very hard & dirty	2	1 $\frac{1}{2}$
X3	Sulphur & Dirt		$\frac{1}{2}$
4	Coal - dirty - dull & bright bands	1	$\frac{1}{2}$
5			
6	Floor - black carbonaceous shale		
7			
8			
9			
10			
11			
12			
13			
14			
15			
16			
17			
TOTAL,		3	5 $\frac{1}{2}$

249

3 5 1/2

Is coal wet or dry? *Dry*
 Time exposed, *0* hours, *30* minutes.
 Weight, *25#* gross, net.

What are the impurities, and how do they occur? *mother of coal - dirt - pyrite in horizontal streaks - little CaCO₃ on cleat*

What are shipped? *2, 4*

What are excluded from the sample? *1, 3*

Coal bed, *#1 (Lower vein)*

*Direction (N., NE., etc.) †Nearest railway station.

Town, *Assumption* Mine, *#1* Co. *Assumption Coal + Min Co*
 Sample No. *2MF* Can No. *ST. D 27* No. *21 - 1602*
 I.—COAL SAMPLE SHEET. Sampler. *Smith + Nebel*



COAL MINING INVESTIGATION

COOPERATIVE AGREEMENT

Operator, Assumption Coal & Mining Co Date, July 30 1912
 Mine, No. 1 Located 1/4 miles* SE from Assumption.
 Location in mine, 2nd Working Right off 19th West - Lower Vein
 Total (vertical) depth from surface at point of sampling, _____ ft.

In describing the beds and character of the members, note any member that is rejected by the miner. Note all clay and sulphur partings, whatever their thickness. Exclude from sample all clay and sulphur partings $\frac{3}{8}$ inch thick or over (and even those of less thickness if they are rejected at mine or tippie).

SECTION OF BED AT POINT SAMPLED

No.	DESCRIPTION	FEET	INCHES
X1	Roof - Limestone grey	—	—
2	Coal - rather dirty	2	11
3			
4			
5	Floor - black carbonaceous shale		
6			
7			
8	Lower seam coal is dirtier and less blocky than upper seam coal		
9			
10			
11			
12			
13			
14			
15		262	35
16			
17			
	TOTAL,	2	11

Is coal wet or dry? Dry
 Time exposed, 0 hours, 25 minutes.
 Weight, 20# gross, _____ net.
 What are the impurities, and how do they occur? Mother of coal & dirt in streaks through coal - black-jack near floor
 What are shipped? 2 (little sulphur)
 What are excluded from the sample? 1

*Direction (N., NE., etc.). _____ Coal bed, No. 1 (Lower Vein)
 †Nearest railway station. _____

Town, Assumption Mine, No. 1 Co., Assumption Coal & Mining Co.
 Sample No. VE Can No. IS 54 No. 21 1602

I.—COAL SAMPLE SHEET. Sampler, Nebel & Smith.
#5229