

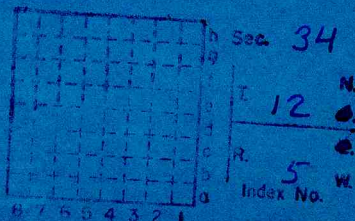
Abandoned in
November, 1971

FREEMAN COAL MNG. CORP

CROWN MINE #1

S-4

Mine Index # 707



MONTGOMERY



Mine originally operated by: (1)

FREEMAN COAL MINING CORP

Date

FARMERSVILLE.

Original name or number: CROWN

Illinois Coal Report p.

LATER OPERATORS

Date	Operator	Name or No.
2 1965	Freeman Coal Mining Corp.	"Crown"
3		
4		
5		
6		
7		
8		
9		
10		
11		
12		
13		
14		

(7' 11" - coal
95A ref.)

*Also owners

#See ownership sheet

Railroad, Wagon, Strip, Idle, Abandoned

shaft

IDENTIFICATION

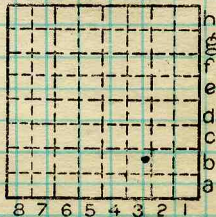
County No. _____

Coal No. 6

Coal Report No. 5-4

Quad.

County MONTGOMERY



Sec. 34

T. 12 N. S.

R. 5 E. W.

Index No.

COAL MINE OPERATOR



(Sheets) COAL PRODUCTION (Sheet)

Period				Tons	
Mo.	Day	Year	Mo.	Day	Year
		1951			
		1952			
		53			
		1954			
		1955			
		1956			
		1957			
		1958			
		1959			
		1960			
		1961			
		1962			
		1963			
		1964			
		1965			
		1966			
		1967			
		1968			
		1969			
		1970			
		1971			

SUMMARIES		
No.	to	No.

Railroad, Wagon, Strip, Idle, Abandoned

Shaft

Sec. 34

IDENTIFICATION

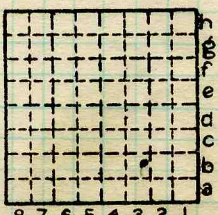
County No. _____

Coal No. 6

Coal Report No. 5-4

Quad. _____

County MONTGOMERY



T. 12 N.
 R. 5 W.
 Index No. _____

COAL MINE—PRODUCTION

ILLINOIS GEOLOGICAL SURVEY, URBANA





Face Channel Sample #1

Freeman Coal Mine Corp. -- Crown Mine, *Montgomery Co.*

14 October, 1969

E.

Heinz H. Damberger & Henry Scoggin & G. J. Allgaier

8th West off 4th Main South, 50' back from face

1550'N & 1180'W of center of Sec. 10-11N-5W

Elev. +267'

From To Thickness

0 - 0.30 0.3 Coal NBB

.30 - .32 .02 Shale, Carbonaceous, Fairly soft.
Coal Streaks.- .66 .34 Coal, Fine Banded in upper third
carbonaceous silt. Coal streaks.

- .70 .04 Boney Coal with some Pyrite streaks.

- 1.3 .60 Coal, NBB, Fusain lenses and some
highly carbonaceous shaley laminae.- 1.36 .06 Coal, dull ^{high in} ~~fine~~ ash and fusain, lense
like pyrite.- 2.46 1.10 Coal NBB. Few thin pyrite lenses
and fusain bands.- 2.48 .02 Shale, carbonaceous with many thin
pyrite lenses.- 3.66 1.18 Coal NBB. Cleats fairly irreg. with
calcite & Pyrite filling.- 3.68 .02 Pyrite lenticular fairly hard and
fine grained.- 4.30 .62 Coal NBB with several thin lenticular
pyrite laminae & lense shaped pyrite
zones up to .05 thick



From	To	Thickness	
4.34	.04		Shale, soft gray <u>Excluded from sample</u> "Blue band"
5.22	.88		Coal, NBB, few lenticular carbonaceous Shale bands and pyrite laminae
5.24	.02		Fusain, fairly soft
5.90	.66		Coal, fairly dull, finely laminated, few fusain bands
<u>7.57</u>	<u>1.67</u>		<u>Coal NBB</u> Underclay, soft about 3" seen



Face Channel Sample #2

Freeman Coal Mine Corp. -- Crown Mine

14 October, 1969

Heinz H. Damberger, Henry ^{F.} Scoggin & G. J. Allgaier

B Entry in 2nd N. in 11th West off 4th Main South

1200'W & 1300'N of center of Sec. 10-11N-5W

Elev. +267'

Roof --

Shale, dark gray, with many irregular slips approx. 2" visible. No plant impressions.

From To Thickness

0	.60	.60	Coal-NBB fusain layer especially in the middle part. / prominent parting-coal above this parting frequently bolted to roof.
1.50	.90		Coal-NBB. Finely laminated. Few highly carbonaceous, lenticular shaley partings and thin fusain lenses.
1.65	.15		Coal fairly dull, canneloid appearance.
1.67	.02		Boney Coal with coal streaks.
1.85	.18		Coal-pretty bright.
1.92	.07		Shale-carbonaceous, many fine grain pyrite lenses - <u>Excluded from sample.</u>
2.1	.18		Coal-NBB
2.4	.03		Coal-somewhat shaley
3.32	.92		Coal NBB several thin pyrite + pyritized fusain lenses.



From	To	Thickness	
	3.31	.01	Shale, highly carbonaceous, dark brown with pyrite concretions.
	3.46	.15	Bright Banded Coal.
	3.74	.28	Coal, dull finely, laminated.
	4.19	.45	Coal, NBB.
	4.27	.08	Coal, somewhat shaley.
	4.62	.35	Coal NBB, pyrite and fusain lenses, rather soft. Thin shaley partings in lower part of layer with probably some movement along partings.
	4.64	.02	Pyrite, fine grained, lenticular.
	5.17	.53	Coal, NBB
	5.25	.08	Shale brown carbonaceous, soft with many, up to .04 thick, pyrite lenses "Blueband" <u>Excluded</u> .
	5.90	.65	Coal NBB few fusain lenses pretty hard.
	5.95	.05	Fusain, pyritized with shale, hard.
	6.91	.96	Coal-bright banded; in upper 1/3 thick vitrain lenses.
	6.94	.03	Boney Coal.
	7.20	.26	Coal bright banded, some fairly thick vitrain lense.

Underclay soft, gray, stigmaria²; sharp contact to coal above. Aprox. .5' visable.



F.C. Sample #3

Freeman Coal Mine Corporation - Crown Mine

14 Oct., 1969

Heinz H. Damberger, Henry Scoggin, & G. J. Allgaier

Room 15 on C. Entry 1st North in 11th West off 4th
Main South. 540'W and 2250'N of center of
Section 10-11N-5W Elev. +267'

Roof

Dark Gray shale fairly softFrom To Thickness

0 - 1.00	1.00	Coal NBB fairly hard, bolted to roof (Not included in samples)

1.00-1.62	0.62	Coal, NBB, several carbonaceous shale and fusain lenses.
1.64	0.02	Shale, carbonaceous, soft parting.
1.97	.33	Coal, NBB, hard.
2.00	.03	Boney Coal.
2.51	.51	Coal, NBB, hard cleats with calcite.
2.53	.02	Coaly Shale.
2.88	.35	Coal, NBB, several fusain lenses.
2.90	.02	Fusain, soft, lenticular.
3.51	.61	Coal, NBB, 3 to 4 thin shaly partings with occasional pyrite lenses less than .01 thick.
3.53	.02	Fusain, soft, lense shaped.
3.87	.34	Coal, NBB.
3.88	.01	Shale, highly carbonaceous, some pyrite lenses soft parting.



From To Thickness

4.36	.48	Coal dull with vitrain laminell
4.45	.09	Coal, bright vitrain lenses approx. .01 thick.
5.00	.55	Coal, dull, relatively few vitrain lense and some soft fusain lenses.
5.06	.06	Vitrain, lenticular.
5.18	.12	Coal, dull, few vitrain lenses.
5.20	.02	Pyrite fine grained & thin shaley parting.
5.78	.58	Coal, NBB.
5.85	.07	Shale, carbonaceous, soft "Blue Band" (<u>Excluded from sample.</u>)
7.52	1.67	Coal NBB, few dull layers, some fine grained pyrite lenses.
7.55	.03	Coal, Dull, Bony.
7.67	.12	Coal, NBB.
7.75	.08	Coal, Somewhat bony, dull.
7.85	.10	Coal, NBB.
7.87	.02	Fusain, hard, somewhat pyritized.
8.02	.15	Coal NBB underclay, soft, rooflets.



Location of Sample #3 Crown Mine 10/14/69

Cleat direction on Coal (Azimuths)

- 1) 135^o
- 2) 133
- 3) 130
- 4) 136
- 5) 140
- 6) 132
- 7) 132^o
- 8) 132^o
- 9) 50
- 10) 35
- 11) 135
- 12) 40
- 13) 127
- 14) 130
- 15) 40^o

Sec. 10 - 11N-5W

ILLINOIS GEOLOGICAL SURVEY, URBANA

Crown Mine

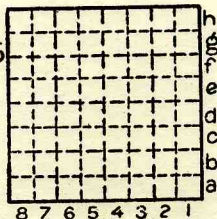
Smith, Gluskoter, Major - 10/27/66

Sample #1, 2500'W, 4400'S, NE/c Sec. 3, T.11N, R.5W.

Sample taken in benches
40-50' from face in 1st main South

	Top	Bottom
Approximately 1' coal left in roof at point of sampling.		
Coal, Normally bright banded, calcite and minor pyrite on vertical fractures.	0	6"
Pyrite and fusain, lenticular stringers	6"	6½"
Coal, normally bright banded, calcite on vertical fractures, 3/8" dull band at 1'3".	6½"	1'5"
Shale, gray, with pyrite nodules up to ½" thick in top (omitted from sample)	1'5"	1'6"
End of Bench #1		
Coal, normally bright banded, calcite and pyrite on vertical fractures thin (less than 1/8") fusain band at 1'8".	1'6½"	2'6"
End of Bench #2		
Coal, normally bright banded, but duller than that above, calcite and pyrite on vertical fractures, calcite more abundant than in above. Pyrite at 3' and 3'3", bony band ½" than associated with pyrite locally at base.	2'6"	3'10"
Coal, normally bright banded, calcite on vertical fractures and <u>extremely</u> thin pyrite stringers throughout bottom of Bench 2 .	3'10½"	4'5½"
End of Bench #3		

Smith, Gluskoter,
 and Major Date 10/27/66
 By.....
 Quad..... Part.....
 County.....



Sec. 3
 T. 11 N.
 R. 5 W.

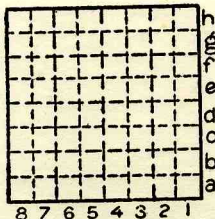
ILLINOIS GEOLOGICAL SURVEY, URBANA

Page 2

	Top	Bottom
Shale with minor amounts of pyrite interlaminated, Blue Band. (omitted from sample)	4'5½"	4'7"
Coal, Normally bright banded pyrite and calcite on vertical fractures, ¼" fusain at 4'10". Bottom 1' is duller than the rest of coal bed.	4'7"	6'10"
End of Bench #4		

*Section 3
T. 11 S.
R. 5 W.*

Smith, Gluskoter,
 By and Major.....Date 10/27/66
 Quad.....Part.....
 County.....



Sec. 3	
T. 11	N. 8
R. 5	W.



ILLINOIS GEOLOGICAL SURVEY, URBANA

Crown Mine

Smith, Gluskoter, Major - 10/27/66

Sample #2

Room 23, 10th North A entry, 210^{ft} in.

900'E, 300'S, NW/c, Section 4, T. 11 N., R. 5 W.

Sampled in benches (6)

Approximately 6' Coal sampled. An estimated 16" of coal left in roof at sampling point.

Coal, Normally bright banded, abundant calcite on vertical fractures, relatively bright.

0 3"

End of Bench #1

Shale, dark gray, carbonaceous with thin vitrain stringers (excluded from sample)

3 3½"

Coal, normally bright banded calcite on vertical fractures, duller than above noticeable lack of pyrite. 1/8" fusain band 1" from bottom.

3½" 1'7"

End of Bench #2.

Bony coal, varies laterally from 1/8" to 1½" includes pyrite lenses laterally but not here.

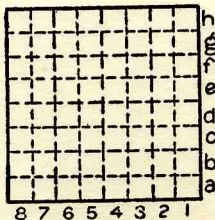
1'7" 1'7½"

Coal, normally bright banded, minor calcite on vertical fractures, mineralized fusain less than 1/8" thick at 1'9" and at 2'7", although unit is duller than top coal, very little calcite and pyrite observed.

1'7½" 2'11"

End of Bench #3.

Smith, Gluskoter,
By and Major Date 10/27/66
Quad..... Part.....
County.....



Sec.	4
T.	11
R.	5 W.

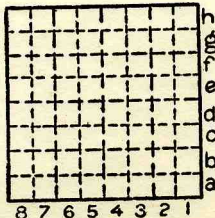


ILLINOIS GEOLOGICAL SURVEY, URBANA

Page 2

	Top	Bottom
Pyrite extremely ^{variable} noticeable in thickness laterally, includes some highly mineralized bony coal. (Omitted from sample).	2'11"	2'11½"
Coal, normally bright banded, calcite and pyrite on vertical fractures. End of Bench #4	2'11½"	3'6½"
Coal, bright, relatively thick vitrain, bands, interbedded with dull bony bands, calcite and pyrite on vertical fractures. ^{at} thin pyrite stringers less than ½" and 4'2" and 4'6". Duller than above. End of Bench #5	3'6½"	4'10"
Coal, dull, banded as above, calcite and pyrite more abundant on vertical fractures. End of Bench #6	4'10"	6'0"
Underclay, light gray, contains Stigmaria.		

Smith, Gluskoter,
 By and Major Date 10/27/66
 Quad..... Part.....
 County.....



Sec. 4

T. 11	N.
R. 5	W.



ILLINOIS GEOLOGICAL SURVEY, URBANA

Freeman Crown Mine

Smith, Gluskoter, Major - 10/27/66

Sample #3, Room 16 10th North D entry, first main west.

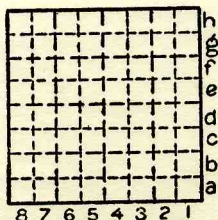
Sample taken 250'W. of the D entry.

400'E, 640'S, NW/c, Sec. 4, T. 11 N., R. 5 W.

Coal 7'11" thick at sample point.

	Top	Bottom
Coal, normally bright banded, calcite and pyrite on vertical fracture, thin pyrite stringers less than 1/16" in top 1" and one 3" below top.	0	5½"
End of Bench #1		
Pyrite lense varies 0-½" omitted.	0'5½"	6"
Coal, normally bright banded, calcite and pyrite on vertical fractures.	6"	1'7½"
End of Bench #2		
Fusain, soft, only slightly mineralized.	1'7½"	1'8"
Coal, wide banded, calcite and pyrite on vertical cleat.	1'8"	1'10"
Fusain, soft	1'10"	1'10½"
Coal, normally bright banded, abundant calcite and pyrite on cleat faces. A ½' bony band at base.	1'10½"	2'2"
End of Bench #3		
Coal, normally bright banded, thin, (less than 1/8" fusain stringers at 2'4" and 2'5", thin patchy pyrite at 2'6". Bone coal and pyrite ½" thick at base (omitted from sample).	2'2"	3'3"
End of Bench #4		

Smith, Gluskoter
 By.....and Major.....Date 10/27/66
 Quad.....Part.....
 County.....



Sec.	4
T.	11 N.
R.	5 W.

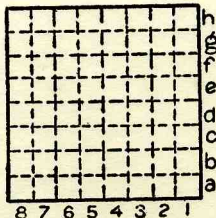
ILLINOIS GEOLOGICAL SURVEY, URBANA

Page 2

	Top	Bottom
Coal, normally bright banded, minor calcite on vertical fractures, thin (1/8") pyrite and bony band at 4'8". End of Bench #5	3'3"	5'4"
Shale, very carbonaceous, coaly, includes vitrain stringers and pyrite band (omitted from sample) ("Blue band").	5'4"	5'5"
Coal, dull, banded, calcite and pyrite abundant on cleat, thin pyrite stringers common throughout. End of Bench #6	5'5"	7'11"

Deer Creek
11/27/66
974

Smith, Gluskoter 10/27/66
 By and Major Date
 Quad Part
 County



Sec. 4

T. 11	N.
	S.
R. 5	E.
	W.



ILLINOIS GEOLOGICAL SURVEY, URBANA

Freeman Crown Mine

Smith, Gluskoter, Major - 10/27/66

Sample Locality #4

9th S. 1st Main E. "B" entry at Room 8.

2200'S, 560'W, NE/c, Sec. 2, T. 11 N., R. 5W.

Thickness at point sampled 5'5" about 1' of coal above separated from coal described by 1/2" shale.

	Top	Bottom
Coal, normally bright banded with fusain (1/2") 1" and 3 1/2" below top, pyrite (<1/8") at 6". Several other very thin fusain bands including one at base.	0"	1'3"
End of Bench #1		

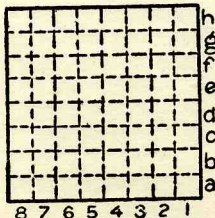
Coal, normally bright banded, pyrite and minor amounts of calcite on vertical fractures pyrite band less than 1/16" thick at 1'8". Mineralized fusain less than 1/8" at 2'6 1/4".	1'3" 2	3'0 1/2"
End of Bench #2		

Pyrite and carbonaceous shale (Blue band?) omitted from sample.	3'0 1/2"	3'1 1/2"
---	----------	----------

Coal, normally bright banded calcite on vertical fracture. Not as bright as above. Approximately six (<1/16") pyrite stringers in bottom 3'	3'1 1/2"	4'5"
End of Bench #3		

Coal, normally bright banded, calcite and pyrite on vertical fractures, relatively dull as is unit above.	4'5"	5'5"
---	------	------

By Smith, Gluskoter Date 10/27/66
 and Major.
 Quad..... Part.....
 County.....



Sec. 2	
T. 11	N. S.
R. 5	E. W.

Freesman Crown Mine

Smith, Glusker, Major - 10/27/66

Sample locality #4

9th S. 1st Main E. "B" entry at Room 8.

2300'S, 560'W, NE/4, Sec. 2, T. 11 N., R. 2W.

Thickness at point sampled 2'5" about 1' of coal above separated from coal described by 1/2" shale.

Coal, normally bright banded with fusain (1/2" 1" and 3/4" below top Pyrite (<1/8") at 5". Several other very thin fusain bands including one at base. End of Bench #1

Top 0"

Bottom 1'3"

Coal, normally bright banded, pyrite and minor amounts of calcite on vertical fractures pyrite band less than 1/16" thick at 1'8". Mineralized fusain less than 1/8" at 1'6". End of Bench #2

Top 1'3"

Bottom 3'0"

Pyrite and carbonaceous shale (blue band?) omitted from sample. Coal, normally bright banded calcite on vertical fractures. Not as bright as above. Approximate position of pyrite stringers in bottom. End of Bench #3

Top 3'0"

Bottom 3'1 1/2"

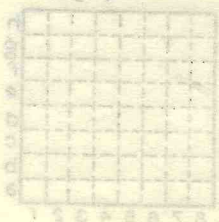
Discovered + filed

1/85 ASD

Petrographic Analyses

A-983 to A-1002 were used from these 4 sample sets.

Sec. 2
T. 11 N.
R. 2 W.



ILLINOIS GEOLOGICAL SURVEY, URBANA

Freeman Coal Co., Crown Mine

No. 6 Coal - sampled July 5, 1962, Harrison, Gluskoter, & Eadie.

Mine idle, miners' vacation. Panel belts to main line track. Conventional trackless equipment. Roof bolting and conventional (rail bars) support.

Samplers accompanied by Bill Burke. East side of mine sealed. Development to south and in Main West. Auxillary ventilation shaft in West.

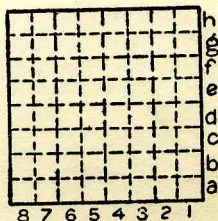
Sample # 1: 800'S, 900'W, NE corner
sec. 27, 12N - 5W

Sample # 2: 400'N, 550'W, SE corner
sec. 21, 12N - 5W

Sample # 3: 1400'S, 500'E, NW corner
sec. 28, 12N - 5W

Sample # 4: 300'S, 2400'W, NE corner
sec. 3, 11N - 5W

By JAH -GRE-HG Date 7-5-62
Quad.....Part.....
County Montgomery



Sec. 24

T.	12 N.
	S.
R.	E.
	5 W.

ILLINOIS GEOLOGICAL SURVEY, URBANA

Freeman Coal Co

Crown Mine

Coal # 6

Sample # 1

Room 10 off 3rd S. off 17th E. of 7th Main N.

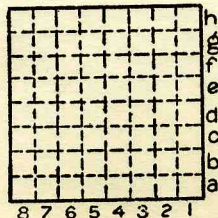
800'S and 900'W of NE. cor., Sec. 27, T. 12 N., R. 5 W.,
3rd P.M.Total height of coal observed = $7\frac{1}{2}$ feet. One foot of
roof coal reported.

Thickness In.		Top to bottom Ft. In.
$6\frac{1}{2}$	Clarain, medium banded with number of vertical cleats containing pyrite and gypsum	$6\frac{1}{2}$
$\frac{1}{4}$	Fusain band-mineralized	$6\frac{3}{4}$
$3\frac{1}{4}$	Clarain, medium to broad banding with one vitrain band up to $\frac{1}{4}$ " thick	10
$\frac{1}{4}$	Fusain - fairly soft $\frac{1}{4}$ "	$10\frac{1}{4}$
$3\frac{1}{4}$	Clarain - medium to well banded	1 $1\frac{1}{2}$ "
$1\frac{1}{2}$	Fusain - fairly clean, partly mineral with $\frac{1}{4}$ " vitrain band in the middle	1 3
$3\frac{1}{2}$	Clarain - medium banded	1 $6\frac{1}{2}$
$\frac{1}{2}$	Zone of Fusain - finely interlaminated with vitrain	1 7
$6\frac{1}{2}$	Clarain, thin to medium banded, bright	2 $1\frac{1}{2}$
$\frac{1}{8}$	Pyrite	2 $1\frac{5}{8}$
$\frac{57}{8}$	Clarain - normally bright banded with bands up to $\frac{1}{8}$ "	2 $7\frac{1}{2}$
$\frac{1}{2}$	Shale band - dark	2 8
	Clarain - narrow to medium banded bright, with vitrain band $\frac{1}{4}$ " at $3'1\frac{1}{2}$ " and an $\frac{1}{8}$ " pyrite band	3 $11\frac{1}{2}$
$15\frac{1}{2}$	$3' 3\frac{3}{4}$ "	

By JAH-GE-HG Date 7/5/62

Quad..... Part.....

County..... MONTGOMERY



Sec. 27

T. 12	N.
R. 5	W.

ILLINOIS GEOLOGICAL SURVEY, URBANA

Freeman Coal Co.

Crown Mine - Coal # 6 - Sample # 1

Inches		Ft.	In.
$\frac{1}{2}$	Shale band - light to medium gray	3	113/4
7 3/4	Clarain - bright banded, fine to medium top increasing to bands 1/8" at bottom	4	7 1/2
1	Shale - medium to dark gray - blue band	4	8 1/2
3 1/2	Clarain - medium banded	5	
$\frac{1}{4}$	Fusain - mineralized	5	$\frac{1}{4}$
7 1/2	Clarain - medium to wide banded with some vitrain bands up to 1/2"	5	7 1/2
$\frac{1}{2}$	Fusain - mineralized	5	7 3/4
6 3/4	Clarain - fine to medium banded, hard, compact.	6	2 1/2
$\frac{1}{4}$	Shale band	6	2 3/4
3 1/2	Clarain, fine to medium banded, hard, compact	6	6 1/4
1/8	Shale band, medium to dark gray	6	6 5/8
11 3/8	Clarain	7	6
	Floor - fire clay - hard gray		

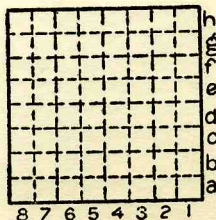
NOTE: Cleating of calcite or gypsum extends through bed.

NOTE: All mineral matter band 1/4" or larger were not included in sample.

By JAH-GE-HG Date 7/5/62

Quad. Part.

County MONTGOMERY



Sec. 27

T. 12	N.
	S.
R. 5	E.
	W.

ILLINOIS GEOLOGICAL SURVEY, URBANA

Crown Mine

Coal #6

Sample # 2

Room 11, off 21st N., 21st W., 1st Main N.

400' N and 550' W of SE cor., Sec. 21, T. 12 N., R. 5 W.,
3rd P.M.

Reported that 1 foot of coal is left for roof.

Total height of coal observed = 7'8"

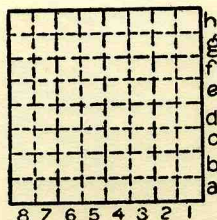
Thickness

In.		Top	
		Ft.	In.
6½	Clarain - medium to wide banded, vertical cleavage with pyrite and calcite or gypsum		0-6½
¼	Shale band	6½	6 ¾
1 ¼	Clarain, wide banded	6 ¾	8
¼	Fusain - non-mineralized, soft		8½"
2 ¼	Clarain - medium to wide banded, occasional ¼" vitrain bands		10½
¼	Pyrite		10 ¾
8 ¼	Clarain, wide banded, with occasional 1/16" fusain band and vitrain bands up to 3/8"	1	7
1 ¼	Fusain zone with occasional pyrite nodules up to ¼" thick, with thin laminae of vitrain.	1	8½
9 ½	Clarain, vertical cleavages, medium banded with occasional ¼" vitrain bands	2	5 ¾
1 ¼	Fusain band with ¼" vitrain band in middle	2	7
1 ½	Clarain - as above	2	8½

By JAH-GE-HG Date 7/5/62

Quad.....Part.....

County MONTGOMERY



Sec. 21

T. 12	N.
R. 5	W.

ILLINOIS GEOLOGICAL SURVEY, URBANA

Crown Mine - Sample # 2 - Coal # 6

Thickness

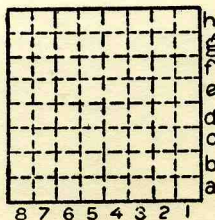
Inches		Top	
		Ft.	In.
2½	Fusain - mineralized with small pyrite nodules, also laminated pyrite band.	2	11
7½	Clarain as above with occasional 1/16" non-mineralized fusain band	3	6½
½	Fusain - soft, non - mineralized	3	7
7½	Clarain - as above	4	2½
½	Pyrite band	4	23/4
7½	Clarain - fine to medium banding with vertical cleavage	4	10
1½	Dull coal - band	4	11½
1½	Clarain - bright banded.	5	1
3/4	Shale	5	1 3/4
1½	Clarain	5	3
½	Shale (last two shaly represent Blue Band)?	5	3 ½
6½	Clarain - medium to wide banded with 3/8" vitrain band	5	9½
½	Shale and pyrite band	5	9 3/4
22½	Clarain - fine to medium band with occasional 1/16" fusain.	7	8
	Underclay		

NOTE: All mineral matter bands over ½" were not included in sample.

By...JAH-GE-HG.....Date...7/5/62.....

Quad.....Part.....

County...MONTGOMERY.....



Sec. 21

T. 12	N.
R. 5	W.

ILLINOIS GEOLOGICAL SURVEY, URBANA

Crown Mine

Coal #6

Sample # 3

From rib off 33rd S. entry, 15th W., 1st main N.

1400'S and 500'E of NW. cor., Sec. 28, T. 12 N.,
R. 5 W., 3rd P.M.

Total thickness of coal = 6'11½"

Roof - black shale

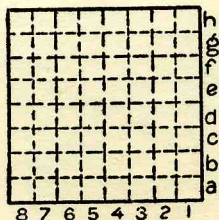
NOTE: All pyrite and shale bands greater than ¼" were
omitted from sample.

Thickness Inches		Top	
		Ft.	In.
1	Bone coal, shale, pyrite inter- laminated with coal		1
7½	Clarain, fine banded, bright		8½
½	Shale and pyrite zone		9
6½	Clarain, fine to medium banded, with occasional 1/16" fusain band	1	3½
½	Dull coal	1	3 ¾
5 ¾	Clarain, medium to coarse banded, bright	1	9 ½
¾	Shale band with pyrite nodules	1	10½
7½	Clarain, fine to medium, banded, bright	2	5½
½	Fusain, soft, non-mineralized	2	6
5	Clarain, fine to medium banded, with many 1/8" pyrite bands and streaks (horizontal) and pyrite filled cleats	2	11
½	Fusain, non-mineralized	2	11½
13½	Clarain, fine to medium banded with occasional pyrite bands (1/8") and		

By... JAH-GE-HG Date 7/5/62.....

Quad..... Part.....

County... MONTGOMERY



Sec. 28

T. 12	N.
R. 5	W.



ILLINOIS GEOLOGICAL SURVEY, URBANA

Crown Mine - Sample # 3 - Coal # 6

Thickness
Inches

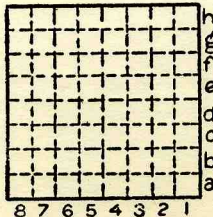
Top
Ft. In.

	with decreasing pyrite filled cleating	4	1
1/2	Pyrite band	4	1 1/2
7	Clarain, bright banded	4	8 1/2
1/2	Shale band	4	8 3/4
9 3/4	Clarain - bright banded, medium to fine banded, with occasional pyrite lenses about 1/16".	5	6 1/2
4 1/2	Clarain - medium to coarse banded with vitrain bands up to 1/2" thick, zone has many pyrite filled cleats - hard	5	11
1	Fusain - mineralized	6	0
3 1/2	Clarain - bright banded, medium to coarse banded - pyrite cleating	6	3 1/2
1/4	Shale band and pyrite	6	3 3/4
4 1/2	Clarain, bright banded, wide banded, with vitrain bands up to 1/2"	6	8 1/2
1 1/2	Shale - interlaminated with fine vitrinite	6	9 3/4
1 3/4	Clarain - bright coarse banded, pyrite cleat	6	11 1/2
	Underclay		

By...JAH-GE-HG.....Date 7/5/62.....

Quad.....Part.....

County.....MONTGOMERY.....



Sec. 28

T.	12	N.	g.
R.	5	W.	h.

ILLINOIS GEOLOGICAL SURVEY, URBANA

Crown Mine

Sample # 4

Coal # 6

In 1st main S.; 250'S of 7th W., off 1st main S.
300'S and 2400'W of NE cor., Sec. 3, T. 11 N., R. 5 W.,
3rd P.M.

Sample taken from east rib, 8' from face

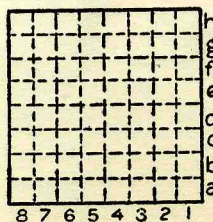
Coal observed and collected is 6'11" thick. One foot
is reported to be left as roof.

Thickness Inches		Top	
		Ft.	In.
4½	Clarain - fine bright banded		4½
½	Fusain - mineralized		4 3/4
11	Clarain - fine to coarse banded with some vitrain band to ½", with fusain up to 1/8", vertical cleating with calcite	1	3 3/4
½	Pyrite band	1	4½
4 3/4	Clarain, medium to coarse, bright banded, with vitrain bands up to ½"	1	9
½	Fusain - mineralized	1	9½
3/4	Clarain - as above	1	10½
½	Dull coal	1	10 3/4
2	Clarain - bright banded, with vitrain up 3/8"	2	3/4
1½	Fusain - mineralized with a few thin pyrite bands	2	2
5½	Clarain - medium to coarse banded, bright	2	7½
3/4	Zone of pyrite and shale and thin vitrinite	2	8
15	Clarain - bright banded, fine to		

By...JAH-GE-HG.....Date..7/5/62.....

Quad.....Part.....

County.....MONTGOMERY.....



Sec. 3

T. 11	N.
R. 5	W.

ILLINOIS GEOLOGICAL SURVEY, URBANA

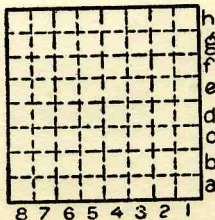
Crown Mine - Sample # 4 - Coal # 6

Thickness Inches		Top	
		Ft.	In.
	medium bands	3	11
$\frac{1}{2}$	Shale band	3	11 $\frac{1}{2}$
7 $\frac{1}{2}$	Clarain - bright banded, fine to medium	4	6 $\frac{1}{2}$
1	Shale - dark gray to black (Blue Band)	4	7 $\frac{1}{2}$
2 $\frac{3}{4}$	Clarain, fine to medium banded, with occasional vitrain up to $\frac{1}{4}$ "	5	10 $\frac{1}{2}$
$\frac{1}{8}$	Shale	5	10 $\frac{3}{8}$
12 $\frac{5}{8}$	Clarain - bright banded, with vitrain up to $\frac{1}{2}$ in.	6	11

By... JAH-GE-HG Date... 7/5/62

Quad..... Part.....

County..... MONTGOMERY



Sec. 3

T. 11	N. 4
R. 5	W. 1



(Pg. 1)

NOTES OF OBSERVATIONS MADE IN CROWN MINE OF THE
FREEMAN COAL MINING CORPORATION, FARMERSVILLE, ILL.

T. 12 N., R. 5 W., Montgomery County.

Oct. 29, 1959

J. A. Simon

K. E. Clegg

In 7th. main north, a fault trends N. 80 W., with approximately 1' of downthrow on the NE. Fault surface dips approximately 80 towards the SW locally (Reverse fault). The fault zone is about 3' across where measured on the mine working face, is filled with loose gouge of coal and roof shale. Some roof shale has been dropped downward into the gouge. All gouge material was soft, badly broken, and very thoroughly mixed. Sizes range from almost powdered material to pieces several inches across.

Coal on the north side of the gouge zone, adjacent to the foot wall, and some of the coal in the gouge, had a distinct brown color as though oxidized by percolating ground water in the broken zone.

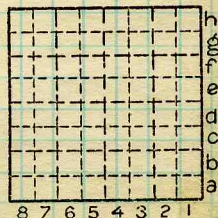
Adjacent to the fault the coal face retains the prominent N. 35 W., cleat common to this part of the mine. (See photographs of brecciated fault zone)

Brecciated fault continues northwest across the 6th. main north where the vertical displacement is about 30" on the southwest block. On the west rib of the 6th. main north comes close to a N. 35 W., trending slip fault with a normal SW downthrow, in such a manner that a small north block stands between the two faults (See sketch) **B**

Date Oct. 29, 1959 T. 12N R. 5W

Quad. _____ Part _____

County Montgomery Index No. _____





(Pg. 2)

In the 4th & 5th main north entries the prominent fracture pattern in the roof appears to be equally well developed in two directions; N. 55 E., and N. 55 W., with no vertical displacement noted. (In most of the rest of the vicinity, the N. 55 W., fracture is much more prominent and is characterized by various amounts of slipping on the southwest side. The coal face in the 4th and 5th main north is solid with normally developed cleat. The brecciated fault visible in the 6th. and 7th. main north entries was not observed in the 4th. and 5th. main north.

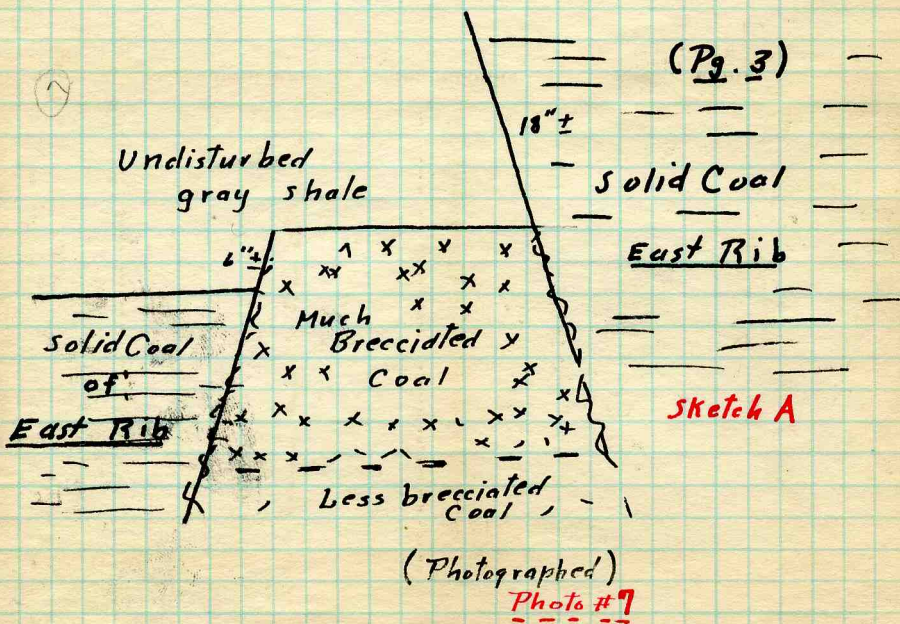
Near survey station 4162, in a cross cut between the 1st. and 2nd. main north entries, is a fault striking about N. 30 W., with a dip of 50 to 55 E., and drowndropped about $3\frac{1}{2}'$ on the east. Roof limestone comes down to within 6" to the top of the coal where it can be seen in the roof. Soft black shale of the immediate roof lies between the limestone and the coal. (Photo. of Wm. Morris, chief engineer, standing by this fault)

(-----)

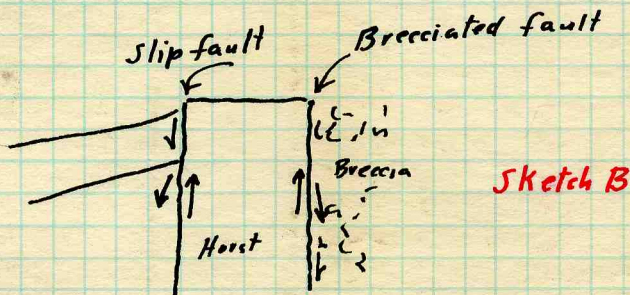
General observations:- Area of brecciation is apparently due to NW-SE trending fractures, some of which show displacement from a few inches to about 2 feet. Fault trend is about at right angle to extension of cutout observed in west and northwest part of the mine

Brecciated trend along north main entries, as indicated on accompanying sketch appears to be 800 to 1000 feet long. In general, mining area to SE was not affected by fracturing.

Although fractures do not appear markedly different from "compactional" slips, these probably represent actual faults with resultant brecciation of roof and coal. One zone, described in notes and photographed, appears to be result of fault gouge along the fault zone (J. A. Simon)



Sketch of fault in NE Corner of main 6th North



Generalized sketch of small horst on West rib of main 6th North



(Pg. 4)



Photo #1 (key photo)



Photo. # 2



Photo. # 3



Photo # 4.

Photographs 1, 2, 3, & 4, showing brecciated fault in 7th. main north entry of Crown Mine Oct. 29, 1959 (See mine map (pg. 6) for location within mine.

mn-22-002.tif - mn-22-003.tif



(Page 5)



Photo #5



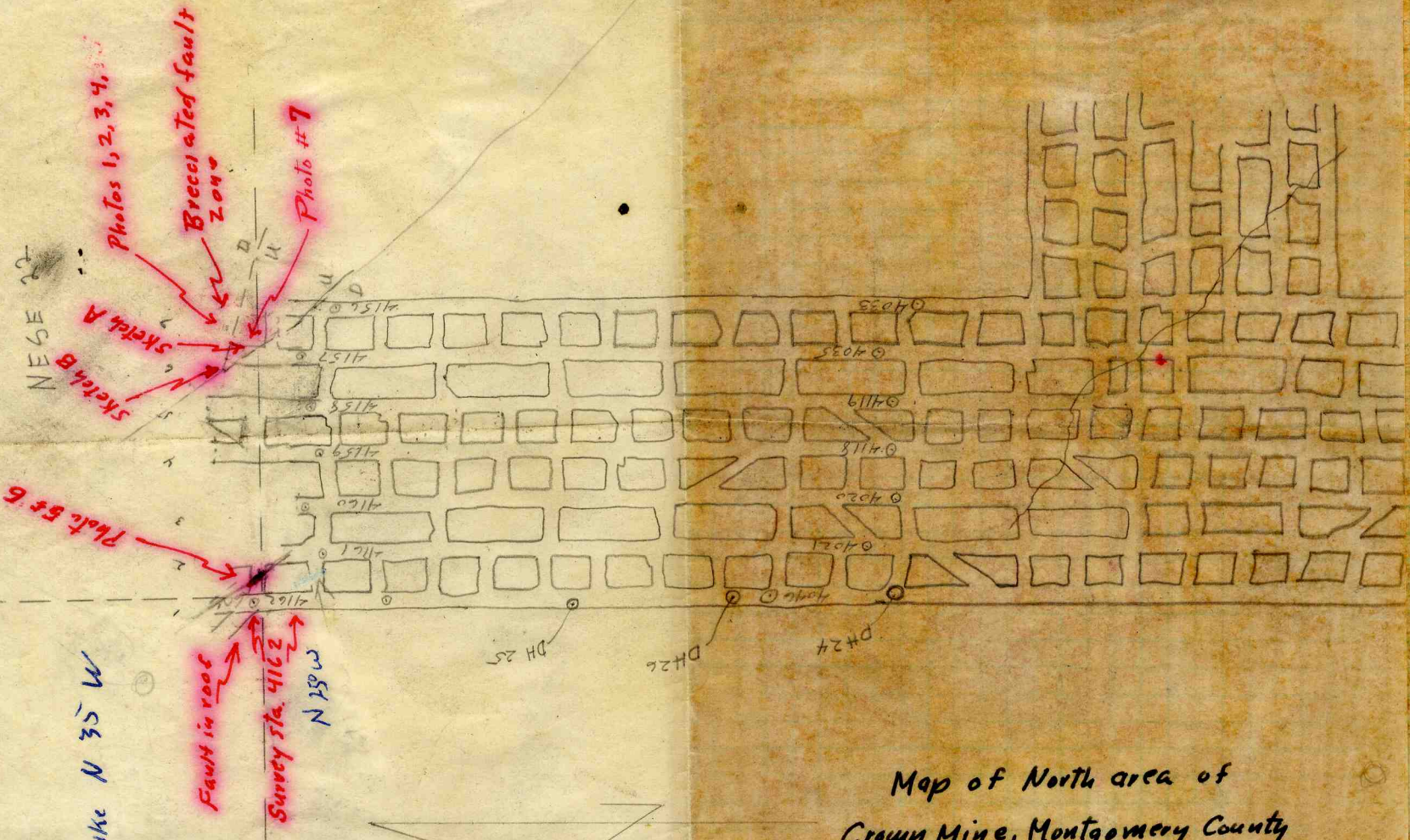
Photo #6



Photo # 7

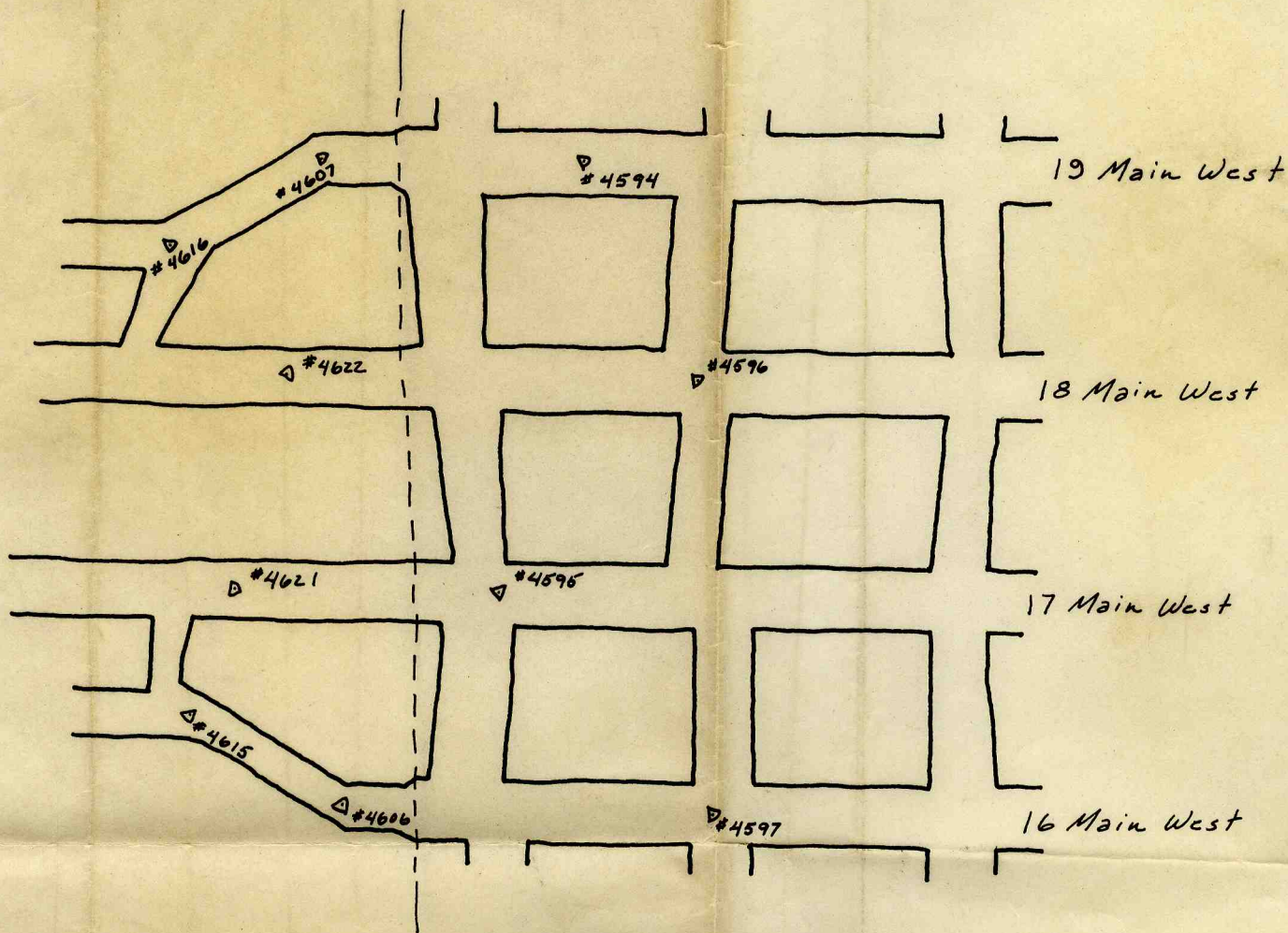
Photographs 5, 6, & 7, Showing Wm. Morris by fault in roof of cross cut between 1st. & 2nd. main north entries. Also photo of fault in east rib of 6th. main north - Shown in **Sketch A.**

mn-22-006.46 - mn-22-008, 15p



Map of North area of
 Crown Mine, Montgomery County
 location of
 Oct. 29, 1959
 showing faulting described in
 preceding notes, photos, sketches





FREEMAN COAL MINING CORP.

SKETCH OF 18 MW WASHOUT

SCALE 1"-50'

8-16-60

12N-SW Montgomery County

Freeman Coal Co. Crown Mine

Visit W&S, JAS, 3/20/59

26th North off 14th W off Main N

Room 8

About 130' beyond room 8

Main cut out

23rd N - 22 N off 14th W off Main N

About room 20

Cut out along entry 23rd
angling to 22 N.

also Room 12

just hit cutout no pic.

(Room 13 hit cutout 470' west
entr 23rd N.

12 June 1957

Crown Mine - Freeman Coal Mining Corp.
Map of 8-14 Main West entries (4-11-56)

(A) = Sample locations
= Photo locations



FREEMAN COAL MINING CORP.
CROWN MINE
FARMERSVILLE, ILLINOIS

SKETCH SHOWING FACES AND MINING NEAR
FACES OF 8 TO 14 MAIN WEST ENTRIES, 4-10-56
SCALE: 1"=25'-0" W.D.M. 4-11-56



Notes from Crown mine of Freeman Coal Mining Corp., Farmersville, Ill., by K. Clegg, P. Potter, D. Farris, & J. Simon. Apr. 10, 1956

Most of notes are from main 11, 12, 13, & 14 west entries. Prime consideration given to a wash-out in the No. 6 coal. Samples were collected, photos taken, and field observations on orientation of plant debris and slickensides obtained.

Photo 1 = Full picture of west end of 14 main west. Facing west from a point about 60' west of Δ 2574 showing coal, coal-sandstone conglomerate & shale roof.

Photo 2 = Closer view of coal, coal-sandstone conglomerate & shale roof near west end of 14 main west.

Photo 3 = Detail of coal-sandstone conglomerate on south wall of main 14 west. About 30' west of Δ 2574

Photo 4 = Picture of west end of 14 main west, showing replacement of coal by siltstone

Photo 5 = North-west corner of west end of 12 main west ' west of Δ 2575. Showing angular unconformity of siltstone over eroded coal.

Samples from Crown mine of Freeman Coal Mining Corporation, Farmersville, Ill., by K. Clegg, P. Potter, D. Farris, & J. Simon (April 10, 1956)

(A) Clay conglomerate. 13 main west entry. Below 3' of coal. 83' west of Δ 2572.



-2-

- (B) Sandstone from south side of 14 main west, 10° west of Δ 2574. (oriented)
- (C) Oriented specimen from near last crosscut of 14 main west. From above crosscut about 55° west of Δ 2574.
- (D) South wall of 11 main west. About 90° west of Δ 2594.
- (E) Oriented sample from 90° west of Δ 2594, 11 main west entry.
- (F) From "pinch-out" on north wall of 14 main west 60° W. of Δ 2574. Sample from "junction" of upper & lower shales. (See samples H & I)
- (G) Clay conglomerate from below 3° of coal at location 83° W. of Δ 2572 in 13 main west.
- (H) Top shale from north side of 14 main west near "pinchout" of coal. 60° west of Δ 2574.
- (I) Bottom shale from north side of 14 main west near "pinchout" of coal. 60° west of Δ 2574.

Entry 14 Main West

Description of lithologies shown on previous pages

Upper shale: gray, medium grained with irregular silty layers up to 2" thick. Also present are sideritic nodules from 1 to 4" across, and occasional sideritic bands up to 1" thick. Many large plant compressions, mostly stems and trunks



-3-

of small trees up to 1'. Apparent bedding dips from subhorizontal to as much as 30 degrees. Bedding dips to north on north wall of entry. This shale contains abundant large slickensides west of marker 2574. Their orientation is as follows:

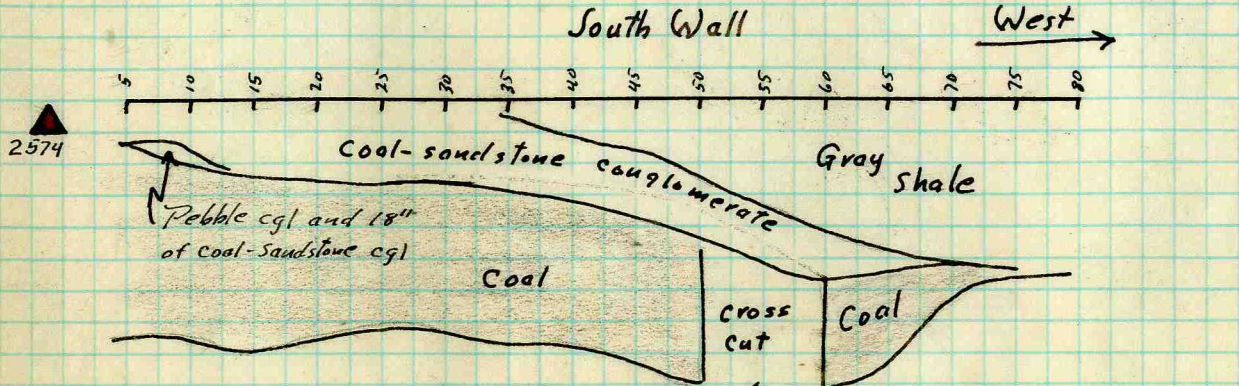
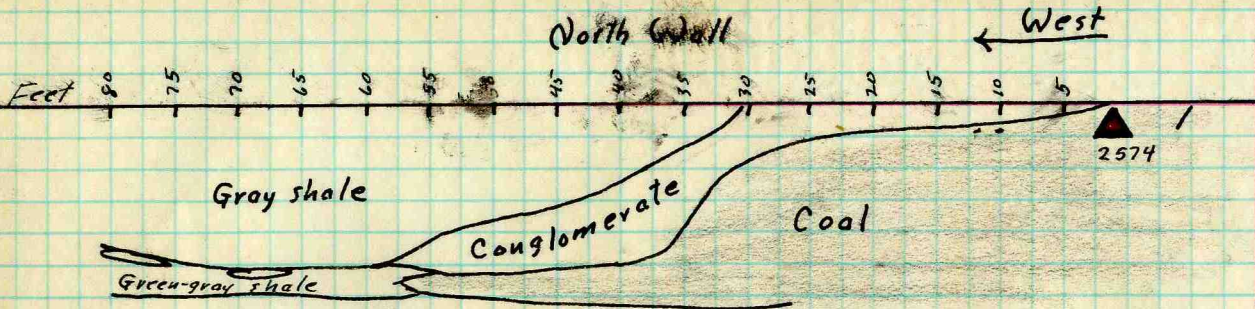
S 39 E	23 S ⁰
N 38 W	23 N
N 36 W	21 N
N 6 W	- N
Due N	- N
N 66 W	12 W
N 73 W	- NW
N 44 W	15 NW
N 42 E	23 NE

Lower shale: gray, greenish gray, dark gray in part and many small slickensides with apparently random orientation. Some carbonaceous and *coaly* material.

Pictures 1, 2, 3 and 4 were taken. Samples B & C collected.



14th main west entry



In this cross cut a south dip is apparent. Top of coal on entry 13 main west is about at level of bottom of coal of 14 Main west



-5-

Entry 13 85 feet west of Sta. 2572.

Clay stone conglomerate cutting S 45 W under about 36" of coal. No cutout materials seen on south rib. Hard, gray, clay conglomerate. Unusually hard "flinty" in part. Sixty feet west of Sta. 2572 is a gray, greenish and dark gray, slickensided clay shale under 48" of coal (opposite cross cut). This unit was not seen on the south rib.

A large tree trunk oriented approximately S 45 W occurs 55' west of Sta. 2572 in normal (?) roof. Only bottem few inches of roof seen. Light gray coaly very very carbonaceous, occasionally slip fractured shale. Much plant debris. Bolting to limestone?

The following slickenside orientations were obtained:

S 32 E	5 S
S 73 E	23 SE
S 35 E	22 SE
S 34 E	12 SE
N 76 E	16 NE
N 3 W	32 N
N 70 E	25 NE
N 45 W	38 NW
N 82 W	23 W

Shale gently truncating coal



Entry 12

Most of entry shows normal relations except at west end slidkensides are uniformly oriented to northwest.



Coal has apparent 4° dip to south.



-6-

Slickensides of entry 12 are dipping as follows (quadrang orientation only):

NW	N
NW	NW
N	NW
E	NW
N	NW
NW	NW
SE	N
NW	NW
N	NW
NW	NW
	N
	N
	NW
	N

Entry 11 90 feet west of Sta. 2594.

Channel appears at west end of entry. Upper 1 foot of coal has a sand and coal conglomerate. This is overlain by a uniform, medium gray, siltstone that is finely laminated. An oriented sample, (Specimen **E**), was obtained from the siltstone and sandstone congl. Only two slickensides observed (because coal forms most of roof), one dipping to the NW, the other to the north.

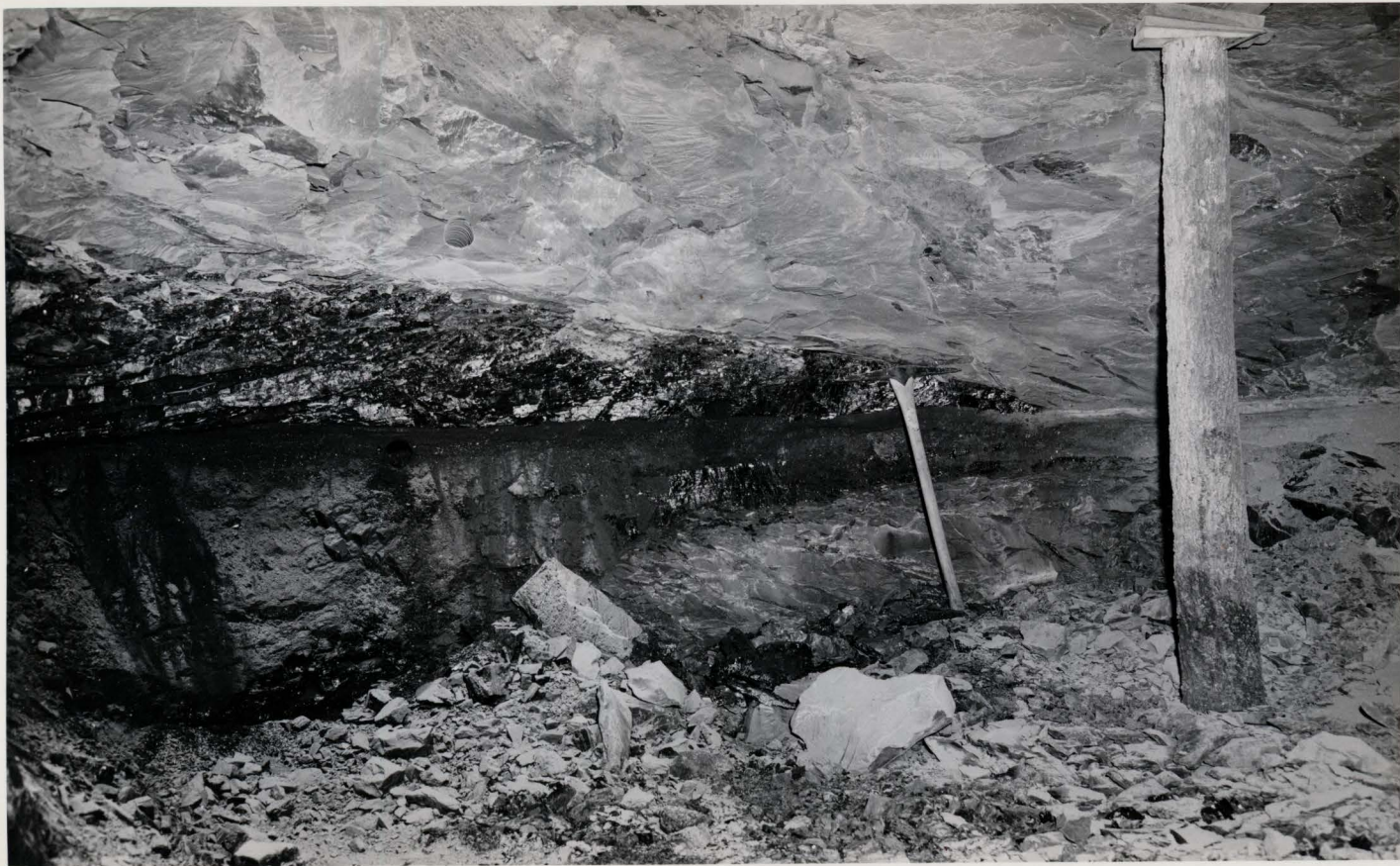


mn. 22-009.tif

① Full picture of west end of
14 main west. Facing west from a
point about 60' west of sta. 2574
showing coal, coal-sandstone cgl.,
and shale room.

(6-10-56)

Crown mine, Farmersville, Ill.



MA-22-010.tif

②

Close view of coal-sandstone,
coal cgl., and shale roof near west
end of 14 main west.

(6-10-56)

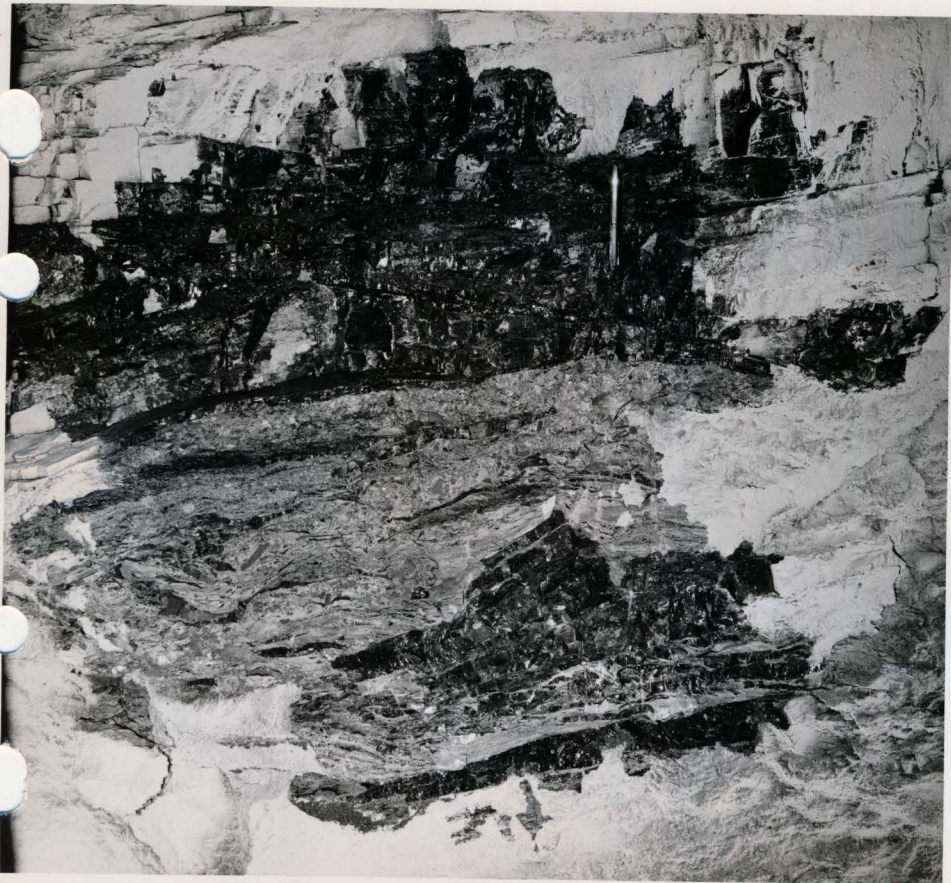
Crown mine, Farmersville, Ill.

③

Detail of coal-sandstone cgl. on
south wall of main 14 west. About
30' west of Sta. 2574.

(6-10-56)

Crown mine, Farmersville, Ill.



ms-22-011.tif



MA-22-012.tif

(4)

Picture of west end of 14 main
west showing replacement of coal by
siltstone washout material.

(6-10-56)

Crown mine, Farmersville, Ill.



21-22-013.tif

(5) North-west corner of west end of
12 main west. About 1' west of
sta. 2575. Showing angular uncon-
formity of siltstone over eroded
coal. (6-10-56)
Crown mine, Farmersville, Ill

originals - see typed copy

Notes from Crown mine
Freeman Coal Mining Corp
Farmersville, Ill.
(Apr. 10, 1956)

Notes in field by Paul Potter

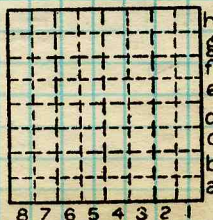
K. Clegg - P. Potter - J. Simon - D. Farris
in party.

Photos by Dale Farris

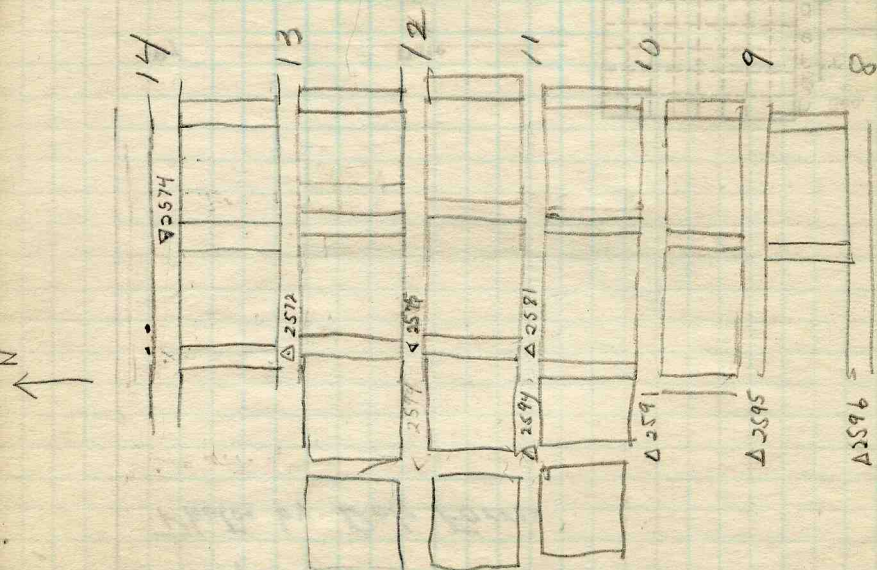
By _____ Date _____

Quad. _____ Part _____

County _____



Sec. _____
T. _____ N.
R. _____ S.
E.
W.
Index No. _____



Sketch of part of Crown mine, Farmersville,
Ill. (6-10-56)

A Final map of area @ $1" = 50'$
is also appended + dated mid-1957.
PJD.

2 carbonos

Notes from Crown mine of Freeman Coal Mining Corp., Farmersville, Ill. by K. Clegg, P. Potter, D. Farris, & J. Siman. Apr. 10, 1958

Most of notes are from main 11, 12, 13, & 14 west entries. Prime consideration given to a washout in the No. 6 coal. Samples were collected, photos taken and field observations on orientation of plant debris and slicheusides obtained.

Photo-1 = Full picture of west end of 14 main west Facing west from a point about 60' west of Δ 2574 showing coal, coal-sandstone conglomerate & shale roof.

Photo-2 = Closer view of Coal, coal-sandstone conglomerate & shale roof near west end of 14 main west.

Photo-3 = Detail of coal-sandstone conglomerate on south wall of main 14 west. About 30' west of Δ 2574

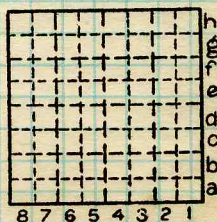
Photo-4 = Picture of west end of 14 main west, showing replacement of coal by siltstone

Photo-5 = North-west corner of west end of 12 main west ' west of Δ 2575. Showing angular unconformity of siltstone over eroded coal.

By Date

Quad. Part

County



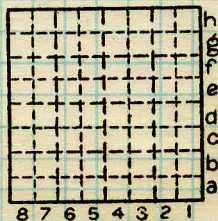
1-A
 Samples from Crown mine of Freeman Coal Mining Corporation, Farmersville, Ill. by K. Clegg, P. Potter, D. Farris, & J. Simon (April 10, 1956)

- (A) Clay conglomerate. 13 main west entry. Below 3' of coal. 83' west of Δ 2572
- (B) Sandstone from south side of 14 main west. 10' west of Δ 2574. (Oriented)
- (C) Oriented specimen from near last crosscut of 14 main west. From above crosscut about 55' W. of Δ 2574
- (D) South wall of 11 main west. About 140' west of Δ 2594
- (E) Oriented sample from 90' west of Δ 2594, 11 main west entry
- (F) From "pinch-out" on north wall of 14 main west 60' W. of Δ 2574. Sample from "junction" of upper & lower shales. (See samples H & I)
- (G) Clay cgl. from below 3' of coal at location 83' W. of Δ 2572 in B main west

By Date

Quad. Part

County



Sec. N.
 T. S.
 R. E.
 W. W.
 Index No.

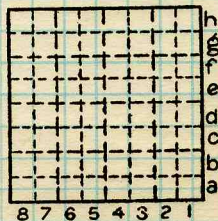
(H) Top shale from north side of 14 main west
near "pinchout" of coal. 60' West of Δ 2574

(I) Bottom shale from north side of 14 main west
near "pinchout" of coal. 60' West of Δ 2574

By..... Date.....

Quad..... Part.....

County.....



Sec. N.
T. S.
R. E.
W. Index No.

2

They are not so well oriented but
Entry 14 Main west

Description of lithologies shown on previous pages.

Upper shale: gray medium grained with irregular silty layers up to 2" thick. Also present are sideritic nodules from 1 to 4" across, and occasional sideritic bands up to 1" thick. Many large plant compressions mostly stems and trunks of small trees up to 1". Apparent bedding dips from subhorizontal to as much as 30 degrees. Bedding dips to north on north wall of entry. This shale

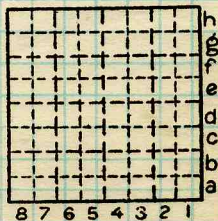
Lower shale: gray, greenish gray, dark gray in part and many small slickensides with apparently random orientation. Some carbonaceous and coaly material.

contains abundant large slickensides west of marker 2574. Their orientation is as follows.

By Date

Quad. Part

County



Sec. N.
T. S.
R. E.
W. Index No.

8 7 6 5 4 3 2 1

- (4)
- S 39 E 23 S
 - N 38 W 23 N
 - N 36 W 21 N
 - N 6 W — N
 - One N — N
 - N 66 W 12 W
 - N 73 W — NW
 - N 44 W 15 NW
 - N 42 E 23 NE

upper

— lower sh.

Pr

Pictures 1, 2, 3, and 4 were taken.
 Samples B & C Collected

Entry 13 85 feet west of Sta 2572

Clay stone conglomerate cutting
 S 45 W under about 36" of coal.

No outcrop materials seen on south side.
 Hard gray, clay conglomerate. Usually
 hard "flinty" in part.

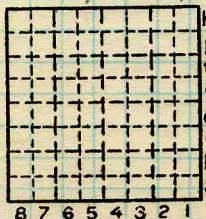
Sixty feet west of Sta. 2572
 is a gray greenish and dark
 gray, slickensided clay shale
 under 48 inches of coal (opposite
 cross cut). This unit was not seen on
 the south side.

A large tree trunk, oriented approx
 S 45 W, occurs 55 west of Sta 2572
 in normal brook. Only bottom
 few inches of roof seen. Light gray

By _____ Date _____

Quad. _____ Part _____

County _____



Sec.

T. N.

S. S.

E. E.

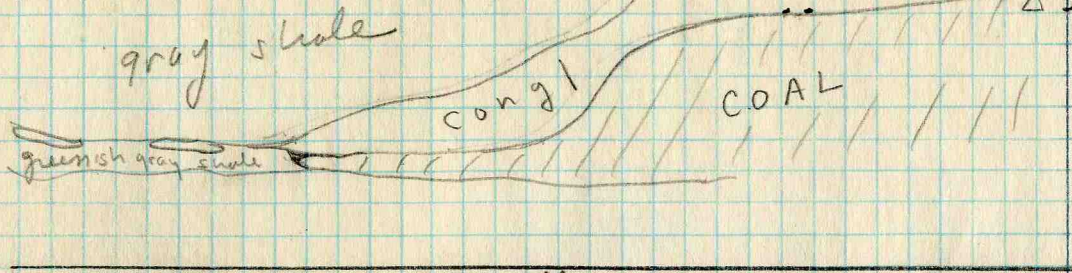
R. W.

Index No.

8 7 6 5 4 3 2 1

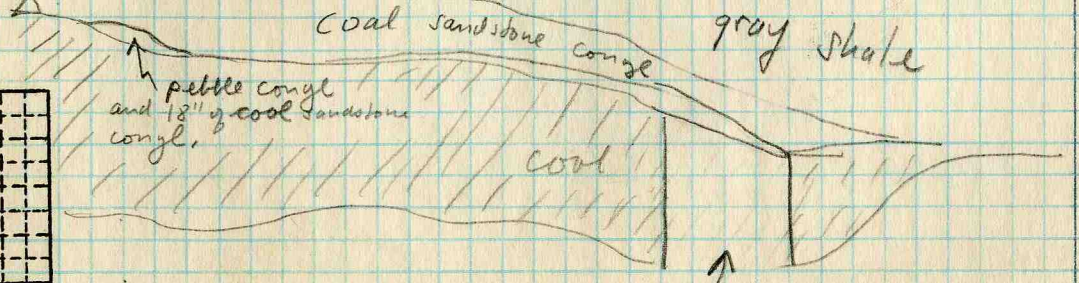
North wall

feet 80 75 70 65 60 55 50 45 40 35 30 25 20 15 10 5



South wall

feet 5 10 15 20 25 30 35 40 45 50 55 60 65 70 75 80



Entry 14

By _____ Date _____
 Quad _____ Part _____
 County _____

8	7	6	5	4	3	2	1
a	b	c	d	e	f	g	h

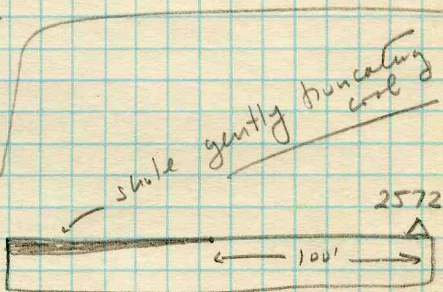
Sec. _____
 T. _____
 R. _____
 N. _____
 S. _____
 E. _____
 W. _____
 Index No. _____

5

gray waxy very micry carbonaceous occasionally slip fractured shale. Much plant debris. Belongs to limestone?

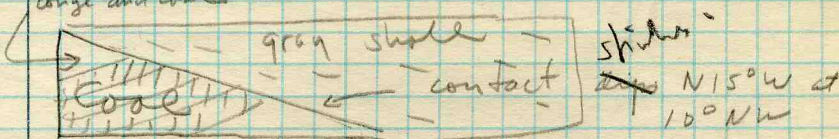
The following slicken side orientations were obtained

S 32 E	5 S
S 73 E	23 SE
S 35 E	22 SE
S 34 E	12 SE
N 76 E	16 NE
N 3 W	22 N
N 70 E	25 NE
N 45 W	32 NW
W 82 W	23 W



Entry 12

Most of entry shows normal relations except at west end slicken sides are uniformly oriented to north west. coal and coal

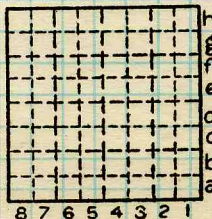


Coal has apparent 40 dip to south.

By _____ Date _____

Quad. _____ Part _____

County _____



Sec. N.
T. S.
E.
R. W.
Index No.

①

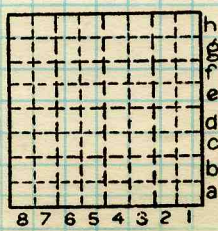
②
Stichen sides of entry 12 are ^{dipping} as follows (quadrant orientation only)

NW	N
NW	NW
N	NW
E	NW
N	NW
NW	NW
SE	N
NW	NW
N	NW
NW	NW
	N
	N
	NW
	N

By Date

Quad. Part

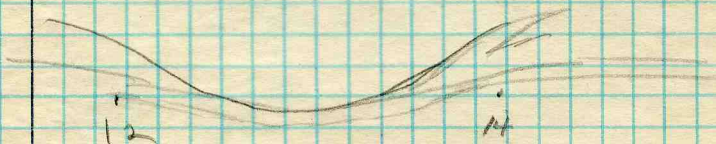
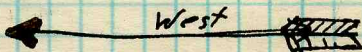
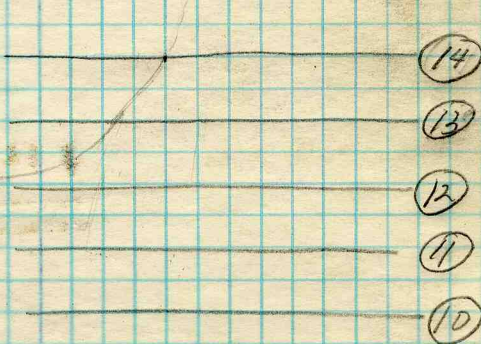
County



Sec. N.
T. S.
R. E.
W.
Index No.



4-10-56



Notes from Crown mine near Farmersville, Ill. re
Sandstone channels

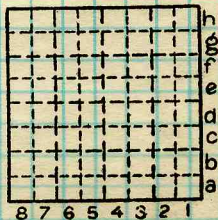
Taken 6-10-56

P. Potter - J. Simon - K. Clegg
D. Farris

By _____ Date _____

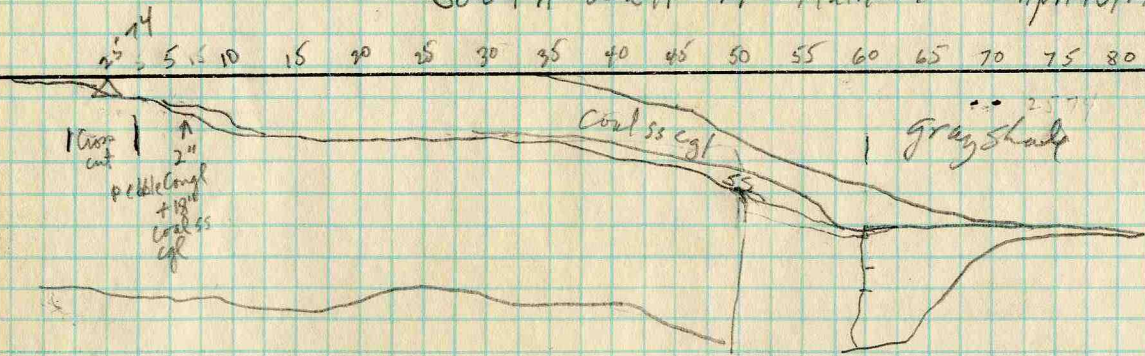
Quad. _____ Part _____

County _____



Sec. _____ N.
T. _____ S.
R. _____ E.
W. _____
Index No. _____

South Wall 14th Main W. Apr. 10, 1956



Cross
cut
in this cross
cut south
dip prominently
S. top of coal
entry 13 about
on bottom of
coal entry 14

Crown Mine
Fauquier Co., VA
(6-10-56)



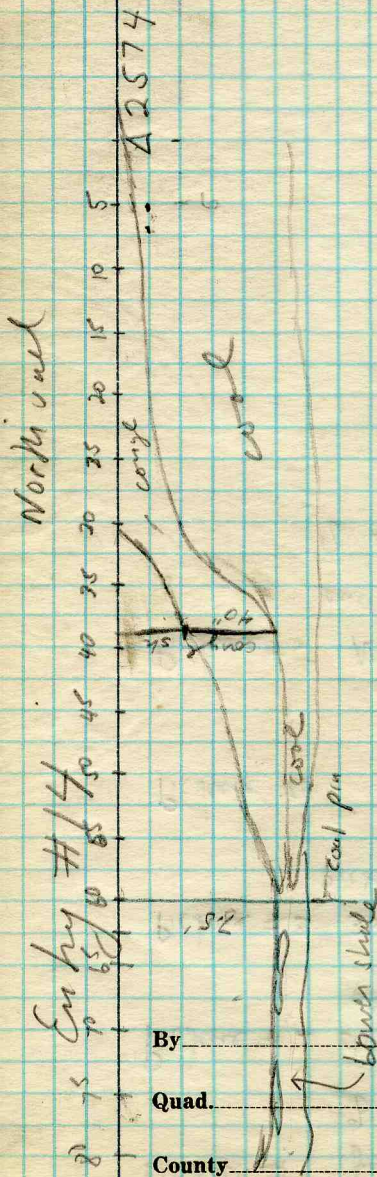
East

Upper shale: gray, med grained with irregular silty layers up to 2" thick with siderite nodules from 1 to 4" across and occasional siderite bands up to 1" thick. Many large plant impressions mostly stems and branches of small trees (up to 1'). Apparent bedding dips from subhorizontal to 45°. Dips to north on north side of entry.

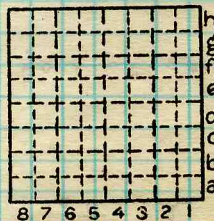
Lower shale gray, greenish gray dark gray in part much siltensidal (small and randomly distributed) some carbonaceous and coaly material.

Sw Cor of West entry #14

Crown Mine, Farmersville.
6-10-56



By _____ Date _____
 Quad _____ Part _____
 County _____



Sec. N.
 T. S.
 R. E.
 W. Index No.

Picture #1 full picture of west end
of entry #14.

Picture #2 detailed photo of face at same
place

Picture #3 30' west of $\Delta 2574$ is detailed
picture of coal and congl. in 14th entry

Picture #4

Picture #5 Northwest corner of west
end of 12 entry. feet west
of $\Delta 2575$.



From Crown Mine, Farmersville, Ill. 6/10/56

Dip and strike of slicken sides in
entry #14

S 39 E - 23° S

~~N 38 W - 23° N~~

~~N 36 W - 21° N~~

~~N 6 W - ° N~~

~~DVE N - ° N~~

~~N 6½ W - 12° W~~

~~N 73 W - NW VERY GENTLY~~

~~N 44 W - 15° NW~~

~~N 42 E - 23° NE~~

#13

~~S 32 E - 5° S~~

~~S 73 E - 23° SE~~

~~S 35 E - 22° SE~~

~~S 34 E - 12° SE~~

~~N 76 E - 16° NE~~

~~N 3 W - 32° N~~

~~N 70 E - 25° NE~~

~~N 45 W - 38° NW~~

~~N 82 W - 23° W~~

#12

~~N 10 W - 72° NE~~



190' west of road 2594

Entry 11 ~~is~~ ~~appears~~ ~~at~~
~~west end of present entry.~~ Some
 sandy coal congl. in ~~upper part~~
 of coal about 1'. Shale well
 channel appears at west end
 of entry. sand and coal congl.
 in upper 1' of coal. This is overlain
 by uniform, medium gray, siltstone
 that is finely laminated. Collected
 an oriented sample from siltstone
 and sandstone congl. Few available
 slides in roof because
 coal forms most of roof west of
 2594. Channel appears to at west
 end of entry,

Crown Mine
 Farmersville, Ill.

⊕ one to W.W. N.



Entry 13

 $\Delta 2572$

W end of entry 85' W of Sta $\Delta 2572$

Clay stone conglomerate (samp.) cutting
 545°W under about 36" of coal
 No cutout materials seen on S rib, lt. gray
 clay congl. very hard, "flinty" in part.

60' W of Sta $\Delta 2572$ Gray greenish and
 dk gray slickensided clay shale under
 48"± of coal (opposite crosscut)
 Not seen on South rib.

A large tree trunk oriented 545°± W
 55' W of $\Delta 2572$ in normal? roof.
 Only bottom few inches of roof seen.
 Lt. gray, coaly, very carbonaceous,
 occ. slip fracture, much plant debris
 Bolting to limestone??

Crown Mine, Farmersville, Ill
 (6-10-36)



Crown Mine, Farmersville, Ill.

6/10/56

~~12 N 63 W 130 NW~~

~~N 22 E 25 NE~~

~~N 47 E 18 NE~~

~~N 45 E 39 NE~~

~~NW 22 NE~~

ENT 12

NW 25 NE

N NW

E N

N NW

NW NW

SE NW

NW NW

N NW

E NW

N

NW

NW

N

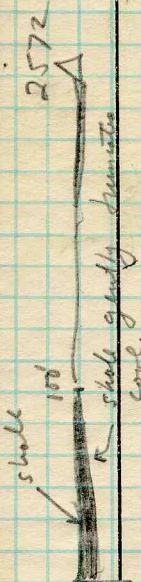
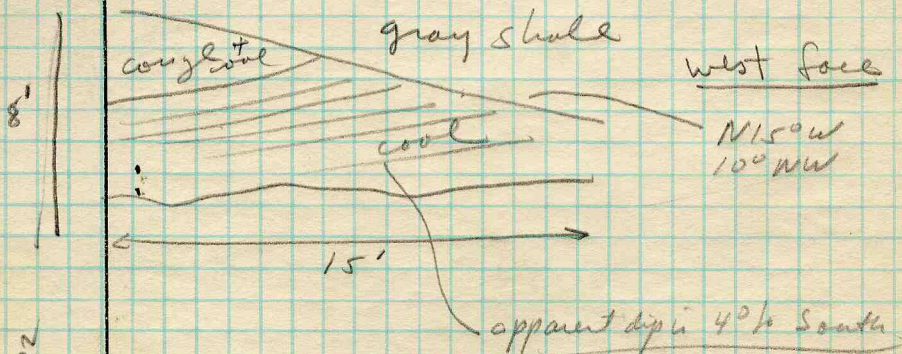
N

NW

N



Entry 12 at west end



Most of entry shows normal reflections
 except at west end. *S. idensis*
 may uniformly orientated to west
 west.

Crown Mine
 Farmersville, Ill (6-10-56)