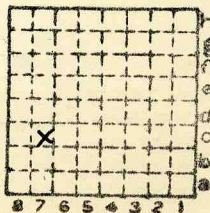




Form 180

G. G. GILBERT.



Sec. 35

T. 31 N. ~~8~~

R. 3 ~~4~~ E.

Index No.

✓ Mine index 2625



Mine originally operated by: (1)

Date 1916

G.G. GILBERT
STREATOR

Original name or number:

Illinois Coal Report p.

LATER OPERATORS

Date	Operator	Name or No.
2		J.C. Quade
3		
4		
5		
6		
7		
8		
9		
10		
11		
12		
13		
14		

* Also owners

See ownership sheet

Railroad, Wagon, Idle, Abandoned

IDENTIFICATION

County No.

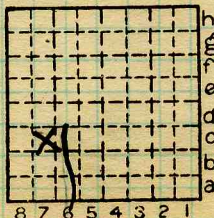
Coal No.

Quad. 80

Part 5

County

LASALLE



Sec. 35

T. 31 N.

R. 3 E.
W.

Index No.

2835

COAL MINE OPERATOR