

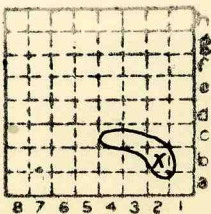
2407



Form 180

Also see 15-31N-3E MB.

PROUDFOOT DAVIS CC



Sec. 9
 T. 31 N. ~~30~~
 R. 3 E. ~~2~~
 Index No.

✓ Mine index 2570



Mine originally operated by: (1)

Date 1934

PROUDFOOT DAVIS CO.
STRATOR

Original name or number:

strip

Illinois Coal Report p.

LATER OPERATORS

Date	Operator	Name or No.
2		J.C. Quade
3		
4		
5		
6		
7		
8		
9		
10		
11		
12		
13		
14		

* Also owners # See ownership sheet

Railroad, Wagon, Idle, Abandoned

IDENTIFICATION 9¹ of #6

County No.

Coal No.

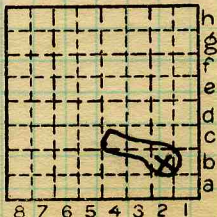
Quad.

80 80

Part 2

County

LASALLE



Sec. 9

T. 31 N.

R. 3 E.
W.

Index No.

2809

COAL MINE OPERATOR

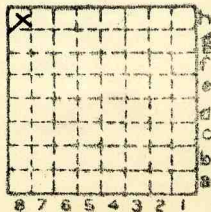
2407



Form 180

Also see 9-31N-3E B2

PROUDFOOT & DAVIS



Sec. 15

T. 31

R. 3

Index No.

✓



Mine originally operated by: (1)

ROUDEFoot & DAVIS
STREATOR

Date

Original name or number:

Illinois Coal Report _____ p. _____

LATER OPERATORS

Date	Operator	Name or No.
2		
3		
4		
5		
6		
7		
8		
9		
10		
11		
12		
13		
14		

* Also owners # See ownership sheet

Railroad, Wagon, Idle, Abandoned

IDENTIFICATION

County No.

Coal No.

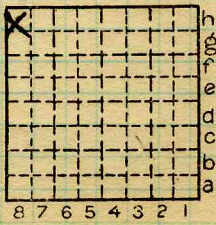
Quad.

8080

Part 5

County

LASALLE



Sec. 15

T. 31 N.

R. 3 E.

Index No.

2815

COAL MINE OPERATOR