



Mine originally operated by: (1)

*H. S. Duggen
Scottsville*

Date *1905.*

Original name or number:
Illinois Coal Report _____ p.

LATER OPERATORS

Date	Operator	Name or No.
2		
3		
4		
5		
6		
7		
8		
9		
10		
11		
12		
13		
14		

* Also owners # See ownership sheet

Railroad, Wagon, Idle, Abandoned

LOCAL MINE IDENTIFICATION

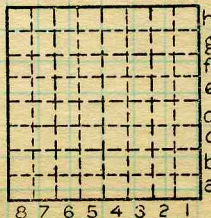
County No. *504*

Coal No.

Quad.

Part

County *Macoupin.*



Sec.

T. N. S.
R. E. W.

Index No.

COAL MINE OPERATOR