

FIELD NOTES

Illinois State Geological Survey

.a1 Sec.34-9S-4E, Williamson County.
Harr.5, July 13, C-1.
SE corner Sec.34

In slope mine #5 top of coal 450-445± base,
coal said to be 4' thick

Bell Hill Mine.

Coal 50½". 2" draw shale with gray shale above.

By G.H.Cady Date 1925

Quadrangle Harrisburg

County Williamson Sec. 34 T 9 S R 4E

										h
										g
										f
										e
										d
										c
										b
										a
	8	7	6	5	4	3	2	1		

Illinois State Geological Survey

.2c

(0834.83) M. W. F. See map no. 4107 d5.1-195 Sh.37
 August 14, 1932
 Slope mine

Alluvium 3'

Limestone, medium gray, hard, massive, argillaceous
 fossiliferous 1'3"

Slate, black, fissile 2'6"

Shale, black, hard, massive 2'6"

Shale, blue black, not so hard and massive 4'
 exposed; mine entry is full of water and top
 of coal was not seen.

In creek flowing south from mine are slumped out-
 crops of the above section; a little coal is
 exposed in the bottom of the creek; Harrisburg
 coal.

.1a

(0834.90) H. R. W. See map no. 4107 d5.1-195 Sh.37
 Entry to slope mine in Harrisburg coal

Slate, black, poorly exposed at top of entry 10"

Shale, medium gray, soft, rather thin bedded 1'

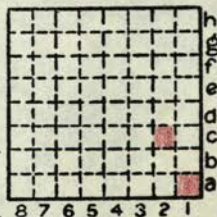
Shale, medium gray, somewhat mottled light and
 dark, harder than above, somewhat pyritic 4'

Shale, soft, poorly bedded, light and dark gray,
 streaked with thin coaly streaks 5"

Coal, good without partings 4'-4'6" (Harrisburg
 coal)

Underclay reported by miner 3'

Limestone ledge hit in sump



By M. W. Fuller; H. R. Wanless Date 1932

Quadrangle Harrisburg

County Williamson Sec. 34 T. 9S R. 4E

Illinois State Geological Survey

.1a

(0834.90) H.R.W. See map no. 4107 d5.1-195 Sh.37
 August 14, 1932
 Gullied roadway just south of mine.

Shale, light brownish gray, silty but not sandy 5'
 Limestone ledge, medium bluish gray, weathering
 brownish, dense, fossiliferous, fossils small
 and cannot be separated from rock; crinoids,
 brachiopods, etc. 1'

Concealed interval 1'

Shale, brownish gray, soft, punky, fossiliferous,
 with casts 5"

Shale, dark gray, soft, with small concretions
 as in pimply slate 6"

Shale, black, fissile, hard, slaty 1' (Same as
 top bed at slope entry)

.1bc

(0834.92) M.W.F. See map no. 4107 d5.1-195 Sh.37
 August 23, 1932
 Outcrop observed from car in passing

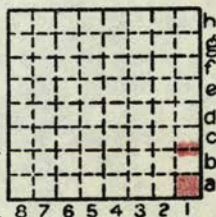
Sandstone,

(0834.1a) J.M.W.
 1928

SE corner section 34.

Coal mine in hollow just north of road.

Coal No. 5 entered by slope. The overlying gray
 shale is well exposed along the roadside. At
 one place nodular limestone occurs low in the
 shale. No fossils were seen.



By H.R. Wanless; M.W. Fuller Date 1932
J.M. Weller 1928

Quadrangle Harrisburg

County Williamson Sec. 34 T. 9S R. 4E