

FIELD NOTES

Illinois State Geological Survey

See map no. 4107 d5.1-19, sheet 2

.5e

(1825.45)

1922.

Moran, Mike and Sons.

Working on the 4 1/2' vein 66' from ground to the vein. Vertical 2 cage shaft, horsepower lift. Production at present about 20 tons per day.

Slate, soapstone and rock roof.

Floor 3"-1', average 6" fire clay on limestone.

Fossil leaves found in slate roof.

Room and pillar mining.

Some horsebacks up to 5-6' thick coming in at an angle.

Many small faults in all directions and throw.

The upper vein 18" thick, 13' below the surface.

There is a dip of 4' from main shaft to air shaft 280' east.

Six men working.

The coal seam rises toward the north several feet in a hundred. It is dipping northward on Coal Creek--looks like gentle folding.

Price is \$4.00 per ton, the miners get half.

.4g

(1825.58)

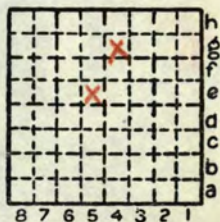
Boring on flat lowish area between the Pennsylvanian hills.

2 1/2' Black soil

2 1/2' Leached brown and drab loess

1' Calcareous loess

3" Start into Pennsylvanian shale, blue gray, slippery

By P. MacClintock Date 1922Quadrangle BudaCounty Bureau Sec. 25 T. 16N R. 6E

FIELD NOTES

Illinois State Geological Survey

.5e
(1825.45)

See map no. 4107 d5.1-19

1922.

Moran Brothers Mine.

Face of coal, in the mine. Note the powder wrapped in paper to be pushed into holes drilled in the coal.

By P. MacClintock Date 1922Quadrangle AnnawanCounty Bureau Sec. 25 T 16N R 6E