

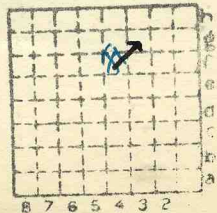


Saline Co. C.C., # ~~44~~ ⁴

(Peabody 44)

ISGS
mi. #129

County # 596



Sec. 15
T. 9[#] S.
R. 2[#] E.
Index No.





Town, **Harrisburg**

Local Authority,

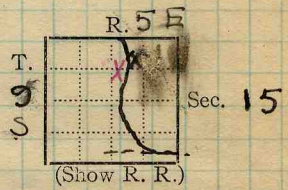
Level: Auth.,

Method,

R. R., **Saline Valley R.R.**
C.C.C + St.L.

Location: authority, **Saline Co. Coal Co.**
Mine Map

Surface alt., **408** ft.
Depth to coal, **275** ft.
Alt. top coal, **133** ft.
Thickness: Av. **75** in.
Max. **87** in., Min. **56** in.



Operator

Mine Name or No.

19 **Saline County Coal Co. No. 4**
Will sink shaft about June 1, 1918.

Successor to

Date

Succeeded by **Big Creek Coals, Inc.**

Date

Succeeded by

Saline Co. Coal Corp. #4

Date

307 N. Mich. Ave. Chicago 1925

PRODUCTION. (Coal Catalog)

1927 **Peabody Coal Co. #44** U. S. No. **4**

| | | | | | | |
|-----------------|--------------------------------|--------------------------------------|--------------|------------------|--|--|
| 19 | 2500 tons daily | | | | | |
| 26 | daily cap. - 4500 Tons. | | | | | |
| 10/28/26 | Coal Age - | opened mine after long shut - | | | | |
| down | | | | | | |
| 1927 | 193 333 | #596 | * #44 | | | |
| 1928 | | | | | | |
| | | | | 1930 - #1 | | |

Geol. Notes? **Yes.**

Coop. No.

Coal secs? **No**

Analyses No. **12917-8-9202**

COUNTY

Examined by **ACC**

Ref.

Coal bed name: Local **#5**

Survey No.

County **Saline SHIPPING MINE** Index No. **0915.57**

K.-ACTIVE SHIPPING OR LOCAL COAL MINE.

Mer 4 1918

TO THE STATE GEOLOGICAL SURVEY:
URBANA, ILLINOIS.

Saline County Coal Co owner, is
lease from a shaft within 90 days on Acres,
the Ogement Grant Dec 15-9-5 Saline Co.
beginning about June 1st 1918
Located as follows in Section No. *15* *Brushy Twp*

Please indicate railroad

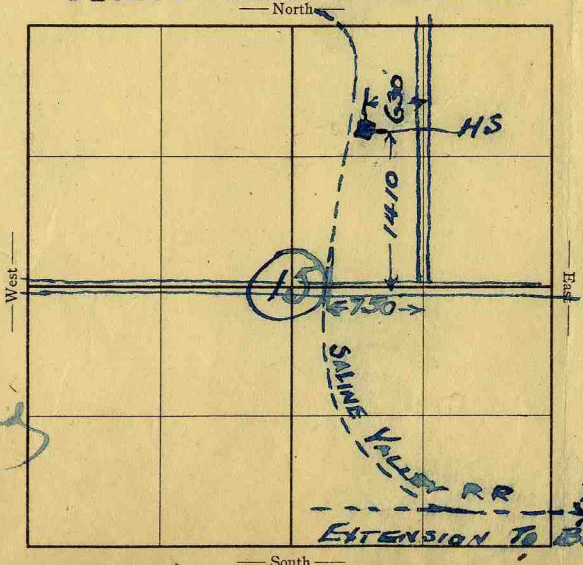
Letter to _____
Date _____
Letter to _____
Date _____
_____ sample sacks
to _____
Date _____
Samples rec'd _____
Date _____
Log rec'd _____
Date _____
Remarks _____

Distances feet from North line
00 feet from East line
Noted feet from South line
_____ feet from West line

Remarks _____

Mine name or No. *A*
Considerable Mining
Material now on ground

Signed
J. D. Wade
Chief Eng



County *Saline* Farm _____ Operator _____
Well No. _____
M/V SHIPPING MINE
0916

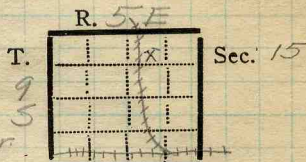
John C. Moore Corporation, Rochester, N. Y. Binder and holes in leaves, each Patented 1906.
MOORE'S MODERN METHODS 9284



Town, *Harrisburg.*
 Local Authority,
Olay Archer, Asst Mine Mgr.
 Level: Auth.,
Map in Engineer's Office.
 Method,

Surface alt., *408* ft.
 Depth to coal, *275* ft.
 Alt. top coal, *133* ft.
 Thickness: Av. *68* in.
 Max. *78* in., Min. *60* in.

R. R., *Big Four*



Location: authority, *J.C. Quade Chief Engr.*

(Show R. R.)

Operator

Mine Name or No.

1921 *Big Creek Coals, Inc.*

No 4

Successor to

Date

Succeeded by

Date

Succeeded by

Date

PRODUCTION.

| | | | | | | | | U. S. No. |
|------|--|--|--|--|--|--|--|-----------|
| 1921 | <i>175 tons per day; mine is just being opened up.</i> | | | | | | | |
| | <i>Mr. Quade - Chief engineer very willing to give any information</i> | | | | | | | |

Geol. Notes? *Yes*

Coop. No.

Coal secs? *3*

Analyses No.

Examined by *Wilson*

Ref.

Coal bed name: Local **SHIPPING MINE**

Survey No. *5*

County *Saline*

Index No. *0915-67*

K.-ACTIVE SHIPPING OR LOCAL COAL MINE.



See
Extra
Sheet
No.

- Entrance *shaft*
- Kind of tippel *steel*
- Motive power for hoist
- Source if electrical
- Kind of hoist (cage, skip, etc.)
- Kind of haulage
- Mining equipment
- Note any features of the equipment that are of special interest

SURFACE DATA.

- A. Topography, *rolling*
- B. Surficial materials, (1) Character,
- (2) Thickness,
- (3) Effect on mining and shaft-sinking, of former drainage lines, underground water strata, etc.

- C. Outcrops, (1) Character,
- (2) Structure,
- (3) Fossil horizons,
- Collection No.,
- (4) Evidences of subsidence,
- D. Note collection of mine maps, drill records and shaft logs.

See drill record sheet,

- E. Notes on surrounding area,

Coal bed name: Local, *Hamburg*

Survey No.

Collector, *HSC*

Mine, *Big Cr. No 7*

Co. *Sabine*

Index No. *091557*

L.—SURFACE SHEET (Geol.)



259693

K. (5) Physical character of Coal,

(a) Relative hardness,

(b) Lustre,

(c) Fracture,

(d) Texture,

See

(6) Impurities in coal, other than bedded, kind, position, persistence, ease of separation, etc.

sulphur lenses less common than in No 2 mine

See

L. Floor: (1) Material, *shale*

(2) Thickness,

(3) Variation,

(4) Note character, condition, tendency to heave, relation to undercutting, commercial value.

See

(5) Clay sample No.

Location,

M. Stratigraphy,

(1) Fossiliferous horizons underground,

plants in roof on east side

Collection No.

Location,

N. Notes on effect of deep drilling in coal mine areas.

See

Collector,

Cola: Survey No.

Mine,

Co.

Index No.



F. Thickness of rock above bed worked,

(1) Important variations,

See

G. Note presence of strata having important effect on mining,

See

(1) Position,

(2) Character,

(3) Persistence,

(4) Other workable coal beds,

See

H. Cap rock,

(1) Thickness,

(2) Height above coal,

See

I. Immediate roof, *shale*

(1) Thickness,

(2) Contact with coal,

(3) Horizontal variation,

See

J. Draw slate. (1) Thickness, *12"* (2) Contacts

only in North & South
 (3) Persistence, *not general*

K. Coal bed: Max. Min. Av. inches

(1) Benches, *none*

(a) Position,

(b) Persistence,

See

(2) Bedded impurities, kind, position in benches, persistence, ease of separation.

See

(3) Irregularities in continuity of bed (due to deposition, erosion, or movement,

See *XI*

(a) Effect on mining,

See

| SECTION | | | | |
|---------|-----|------|-------|------|
| Ft. | in. | Name | Index | Sym. |
| | | | | |
| | | | | |
| | | | | |
| | | | | |
| | | | | |
| | | | | |
| | | | | |
| | | | | |
| | | | | |
| | | | | |
| | | | | |
| | | | | |
| | | | | |
| | | | | |
| | | | | |
| | | | | |
| | | | | |
| | | | | |
| | | | | |
| | | | | |
| | | | | |



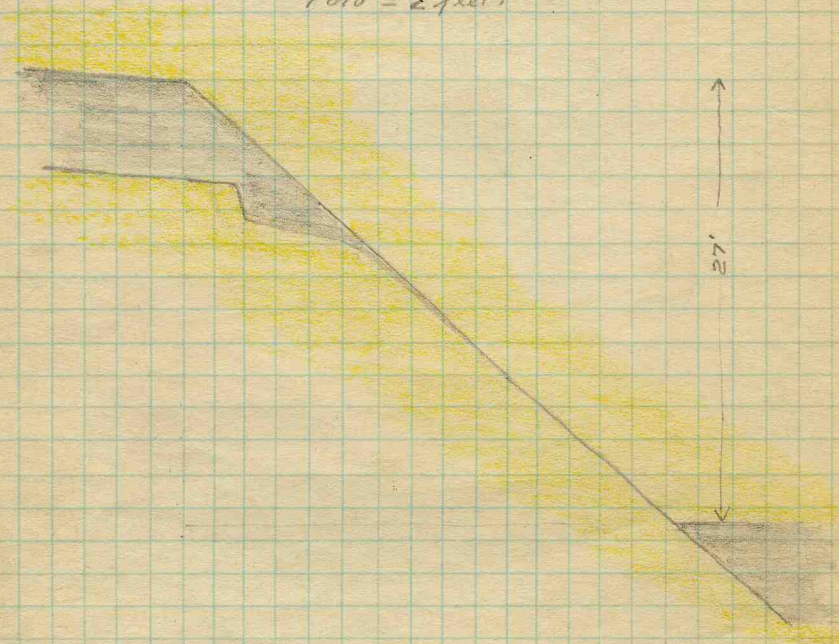
INDEX

K3

A fault in main back entry, rpt'd by Wilson as having 6' throw, was met at air shaft in 27 foot throw but it pinches out to a few inches at 300 feet see sketch below

On north side of mine - cf mine map, at face of main north of Bath West another fault of ca 12' throw. This trends on E.W. Up on north.

sketch of fault at air shaft -
1 div = 2 feet.

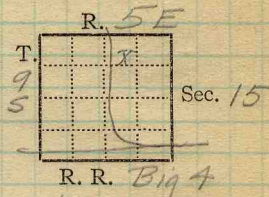


Collector HEC
X-1

EXTRA NO.

Index No. 0915.57
County Salem

Mine Name or No., *No 4*
6 miles W from *Harrisburg.*
 Operator, 191*1*
Big Creek Coals, Inc.
 Operator, 191



Entrance, *Shaft* Elev., *413.0* ft. *Top cone center* above, *Sea Level*
 Depth to bottom coal, *275* ft. Alt. *133.17* (See log file)
279.83 - from center

SURFACE DATA.

- A. Topography, *Rolling* See
- B. Surficial materials. (1) Character, *Clayey*
7 1/4'
 (2) Thickness, *12'* (3) Effect on mining and shaft-sinking, of former drainage lines, underground water strata, etc. *No information*

413
133.17

279.83

- C. Outcrops, (1) Character, See
 (2) Structure, See
 (3) Fossil horizons, See
 Collection No.,
 (4) Evidences of subsidence, See
- D. Note collection of mine maps, drill records and shaft logs.

Shaft Log from S.C. Quade, Chief Eng. Harrisburg offices. Blue Print in collection

See drill record sheet,

E. Notes on surrounding area,

See

Coal bed name: Local, Survey No. *5*

Collector, *Wilson*

Mine, *Big Creek #4* Co. *Saline* Index No. *0915.87*

L.—SURFACE SHEET (Geol.)



K. (5) Physical character of coal in benches,

(a) Relative hardness, *Whole seam, except top 12", is very hard.*(b) Lustre, *Bright to glance.*(c) Fracture, *Cleat poorly developed.*(d) Texture, *Laminated* See

(6) Impurities in coal, other than bedded,

(a) Kind, *FeS₂ stringers & lenses.*

(b) Position and persistence,

In middle & top coal

(c) Rejected, Ease of separation,

See

L. Floor: (1) Material, *Floor clay*(2) Thickness, *2-3'*

(3) Variation,

(4) Note character, condition, tendency to heave, relation to undercutting commercial value,

Floor clay is very hard - Mine is so new that not much opportunity for a squeeze has been given.

See

(5) Clay sample No.

Location,

M. Stratigraphy,

(1) Fossiliferous horizons underground,

Immense tree trunks in shale overlying coal.

Collection No.

Location,

N. Notes on effect of deep drilling in coal mine areas.

See

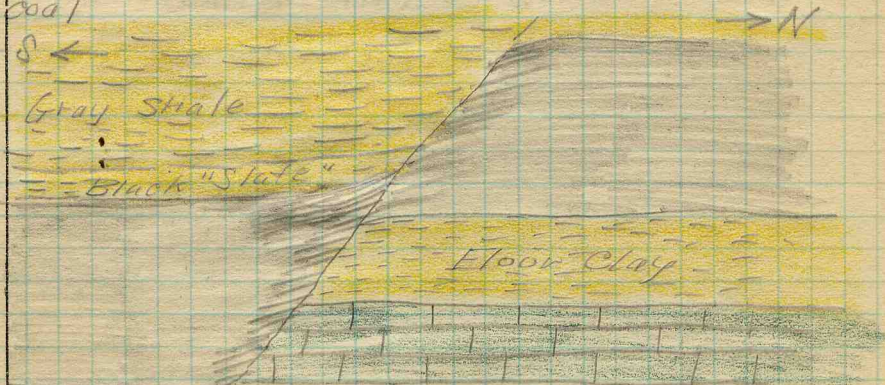
Collector, *Wilson*Coal: Survey No. *5*Mine, *Big Creek #4* Co. *Saline*Index No. *0915 '67*



INDEX

(36713-500-7-20)

K3 Fault in 2nd S off the Main Back Entry.
300 feet from bottom.
Strike $N30^{\circ}W$ (Approx. - wire makes uncertain)
Dip 59° to the S.
S. side down thrown 6', thickness of
coal



Some fracturing along fault plane in
coal; coal shows "drag"

Scale, Approx: 1 div. = 1 foot.

This is the small fault marked in
yellow pencil on the blue print.

G. This "slate" makes a good roof and falls
are rare. The first and only large fall here
killed three men. A piece of the "slate" about
10' x 15' x 10" came down.

Collector Wilson

X- 1

EXTRA NO. 1

Index No.

0915.67

County

Saline



NDEX

(36713-500-7-20)

K₃ The big fault was first encountered in this mine about 30' E. of Air Shaft. The coal is upthrown 12' on the N.E. side, causing much trouble in mining. The coal dips toward the fault from the S.W., the downthrown side, at about 6°. On the N.E., the upthrown side the coal is apparently level.

Collector Wilson

Index No. 0915.67

X- 2

EXTRA NO. 2

County Saline

Operator, *Big Creek Coals Inc.* Date *July 11, 1921*
 Mine, *No. 4* Sec. *15* T. *95* R. *5E*
 Located, *6 W.* miles from *Harrisburg*
 Location in mine, *2nd South. 64" from face.*

| GRAPHIC SECTION | | DESCRIPTION OF SECTION (AT POINT SAMPLED) | | |
|---|-----|---|--|---------------|
| In. | No. | No. | (Note character and thickness of roof) | Inches |
| 0 | | | <i>Black shale roof</i> | |
| 15 3/4 | 1 | 1 | <i>Coal</i> | <i>15 3/4</i> |
| | | 2 | <i>Charcoal</i> | <i>1/4</i> |
| | | 3 | <i>Coal</i> | <i>1 3/4</i> |
| 1/4 | 2 | 4 | <i>Charcoal</i> | <i>1/4</i> |
| 1/4 | | 5 | <i>Coal</i> | <i>23 1/2</i> |
| | | 6 | <i>Clay mixture</i> | <i>1/4</i> |
| 23 1/2 | 5 | 7 | <i>Coal</i> | <i>34 1/2</i> |
| | | | <i>Tap 75 1/4</i> | <i>76 1/4</i> |
| 1/4 | 6 | | | |
| 34 1/2 | 7 | | | |
| | | (Note character and thickness of floor) | | |
| | | Total thickness of coal. | | |
| Condition, <i>As mined</i> | | Time, | hr. | min. |
| Wt. Gross, <i>35</i> lbs. | | Net, | lbs. | |
| What Nos. shipped by Co.? | | | | |
| Excluded from sample: No. <i>None</i> | | | | |
| Sample represents <i>75 1/2</i> in. tons. | | | | |
| Impurities? How do they occur? | | | | |

Sample No. _____ Can No. *N-21-80* Lab. No. *12917*
 Collector, *Netzeband* Coal: Survey No. *5*
 Mine, *Big Creek #4* Co. *Saline* Index No. *0915.67*
 R.—COAL SAMPLE SHEET.

Operator, *Big Creek Coals, Inc.* Date *July 11, 1921*
 Mine, *No. 4* Sec. *15 T. 95 R. 5E*
 Located, *6 W.* miles from *Harrisburg*
 Location in mine, *N.W. entry 50' from face.*

| GRAPHIC SECTION | | DESCRIPTION OF SECTION (AT POINT SAMPLED) | | |
|--|----------|---|--|------------------|
| In. | No. | No. | (Note character and thickness of roof) | Inches |
| <i>12 1/2</i> | <i>1</i> | | <i>Black shale roof.</i> | |
| <i>1/4</i> | <i>2</i> | <i>1</i> | <i>Coal</i> | <i>12 1/2</i> |
| <i>2 3/4</i> | <i>3</i> | <i>2</i> | <i>Charcoal</i> | <i>1/4</i> |
| | <i>4</i> | <i>3</i> | <i>Coal</i> | <i>2</i> |
| | | <i>4</i> | <i>Pyrite</i> | <i>3/4</i> |
| | | <i>5</i> | <i>Coal with pyrite stringers</i> | <i>26 1/2</i> |
| <i>26</i> | <i>5</i> | <i>6</i> | <i>Charcoal</i> | <i>1/2 - 1/4</i> |
| | | <i>7</i> | <i>Coal</i> | <i>5 3/4</i> |
| | | <i>8</i> | <i>Pyrite</i> | <i>1 3/4</i> |
| <i>1 1/4</i> | <i>6</i> | <i>9</i> | <i>Coal</i> | <i>16</i> |
| <i>5 3/4</i> | <i>7</i> | | | |
| <i>1 1/2</i> | <i>8</i> | | <i>Tap 63"</i> | |
| <i>16</i> | <i>9</i> | | | |
| (Note character and thickness of floor) | | | | |
| Total thickness of coal. | | | | |
| Condition, <i>As mined</i> | | Time, | hr. | min. |
| Wt. Gross, <i>25</i> lbs. | | Net, | lbs. | |
| What Nos. shipped by Co.? | | | | |
| Excluded from sample: No. <i>4, 8</i> | | | | |
| Sample represents <i>6 3/4</i> in. tons. | | | | |
| Impurities? How do they occur? | | | | |

Sample No. _____ Can No. *N-21-81* Lab. No. *12918*
 Collector, *Netzband* Coal: Survey No. *5*
 Mine, *Big Creek #4* Co. *Saline* Index No. *0915.67*
 R.—COAL SAMPLE SHEET.



Operator, *Big Creek Coals, Inc* Date *July 11, 1921*
 Mine, *No. 4* Sec. *15* T. *9S* R. *5E*
 Located, *6 W* miles from *Harrisburg*
 Location in mine, *2nd E off 2nd N on 2nd bench 75' from face*

| GRAPHIC SECTION | | DESCRIPTION OF SECTION (AT POINT SAMPLED) | | |
|------------------|--------------|---|---|--------------|
| In. | No. | No. | (Note character and thickness of roof) | Inches |
| | | | <i>Black shale roof</i> | |
| <i>28</i> | <i>1</i> | <i>1</i> | <i>Coal</i> | <i>28</i> |
| | | <i>2</i> | <i>Charcoal</i> | <i>1/4</i> |
| | | <i>3</i> | <i>Coal</i> | <i>2 1/2</i> |
| | | <i>4</i> | <i>Charcoal</i> | <i>1/4</i> |
| <i>1/4</i> | | <i>5</i> | <i>Coal</i> | <i>5 3/4</i> |
| <i>2 1/2 1/4</i> | <i>2 3 4</i> | <i>6</i> | <i>Clay</i> | <i>1/8</i> |
| <i>5 3/4</i> | <i>5</i> | <i>7</i> | <i>Coal</i> | <i>4 1/2</i> |
| <i>4 1/2 1/4</i> | <i>6</i> | <i>8</i> | <i>Clay mixture</i> | <i>1/4</i> |
| | <i>7</i> | <i>9</i> | <i>Coal</i> | <i>2 1/4</i> |
| <i>2 1/4</i> | <i>9</i> | <i>10</i> | <i>Charcoal</i> | <i>1/4</i> |
| | | <i>11</i> | <i>Coal</i> | <i>10</i> |
| <i>1/4</i> | <i>10</i> | | | |
| <i>10</i> | <i>11</i> | | | |
| | | | <i>Tape 71"</i> | |
| | | | (Note character and thickness of floor) | |
| | | | Total thickness of coal. | |
| | | Condition, <i>As mined</i> | Time, hr. min. | |
| | | Wt. Gross, <i>30</i> lbs. | Net, lbs. | |
| | | What Nos. shipped by Co.? | | |
| | | Excluded from sample: No. <i>None</i> | | |
| | | Sample represents <i>71</i> in. tons. | | |
| | | Impurities? How do they occur? | | |

Sample No. _____ Can No. *N-21-82* Lab. No. *12919*
 Collector, *Netzeband* Coal: Survey No. *5*
 Mine, *Big Creek #4* Co. *Saline* Index No. *0915.67*
 R.—COAL SAMPLE SHEET.