

FIELD NOTES

Illinois State Geological Survey

(0225.)

See map no. 110, 33, 45, 4-1

1935?

5h Exposure of about 20' dark gray to black shale, thin-irregularly bedded, sheety and slightly pimplly toward base. At top of exposure are two 1" bands of limestone, gray, hard, fossiliferous, with some pyritic fossils; 3'6" below these bands one concretion noticed, dense, calcareous, smooth 6' x 8".

Mississippian limestone found in place about 30' above stream which would be about 20' below base of above shale section.

Further E. along bluff several openings in coal - all abandoned and caved in.

Shale, black, sheety and pimplly, thin-bedded, with large concretions in it.

Coal - thickness could not be measured

Clay - light gray, full thickness not seen, but down bank and about 10' above water level, clay lies right on massive limestone - Mississippian.

4g Around hill to SE are several small openings and outcrop of coal

Coal overlain by black sheety shale with concretions.

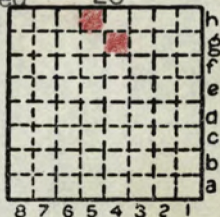
Beds apparently essentially flat lying.

Above black shale is gray to dark gray thin-bedded shale, no fossils noted, but shale slightly calc.

Below coal is underclay, gray, soft, coaly streaks near top, coalified roots.

Coal thickness in one mine measured = 26"

(Continued next page)



By E.T. Benson Date 1935?

Quadrangle Winchester

County Scott Sec. 25 T 15N R 13W

FIELD NOTES

Illinois State Geological Survey

See map no. 4107 c3.5-5

(0225.4g)

September 10, 1927

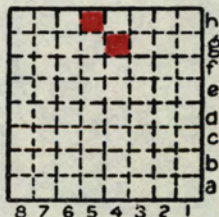
Top of Mississippian limestone at 500'.

Salem limestone 15' Bottom Mississippian
Shale, gray Top Pennsylvanian

Contact exposed in tributary of Mauvaise Terre Creek
 $\frac{1}{4}$ mile E. of road.

(0225.5h)

Abandoned coal mine. Elevation 520'+ 540'-



By K.W.Stott Date 1927

Quadrangle Winchester

County Scott Sec. 25 T 15N R 13W

FIELD NOTES

Illinois State Geological Survey

p. 2

(0225.4h) cont.

October 9, 1922

Slight Eastern dip.

Fossils abundant and well preserved in bed 6.
 Fossils abundant and poorly preserved in bed 3.
 Collection taken from bed 6.

The coal here, but unexposed, is "Colchester #2" and the bed 6 is the same as the "Chonetes Bed" of Southwestern Brown and Southeastern Adams counties. Bed 6 is also the same as the upper 5' of bed 7 at Scott 0226.2h.

The coal has been mined all along this bluff as is shown by numerous old drift mine dumps.

By John S. Ivy Date 1922
 Quadrangle Winchester
 County Scott Sec. 25 T. 15N R. 13W

