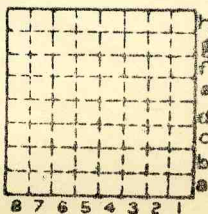




Form 180

LASALLE Co. CARBON CC #5

NI #
102



Sec. 4

T. 32 N. 5

R. 1 E. W.

Index No.





Mine originally operated by:

(1) LASALLE CO. CARBON CO #5
CEDAR POINT.

Date

1907

Original name or number:

Illinois Coal Report

p.

LATER OPERATORS

Date	Operator	Name or No.
2	1929 Ab'd'd!	
3		
4		
5		
6		
7		
8		
9		
10		
11		
12		
13		
14		

* Also owners

See ownership sheet

Railroad, Wagon, Idle, Abandoned

IDENTIFICATION

County No.

Coal No.

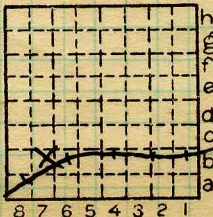
Quad.

6262

Part 8

County

LASALLE



Sec. 4.

T. 32 N.

R. 1 E.

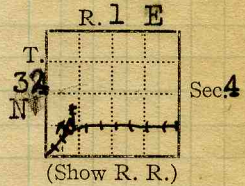
Index No.

2504.



Town, ~~La Salle~~ Cedar Point Surface alt., 653 ft.
 Local Authority, WALSH, MINE SWIFT Depth to coal, 542 ft.
 Level: Auth., Bull 10 Alt. top coal, 111 ft.
 Method, Topog. Map Thickness: Av. 42 in.
 Max. in., Min. in.

R. R., C. M. + S. P.



Location: authority, Bull 10
 Mine Map LaSalle Hen. Quad.
 1050' N x 1050' E of SW corner
 Operator

Mine Name or No.

19 LaSalle Co. Carbon Coal Co. No. 5
 LaSalle, Ill.

Successor to
 Date abandoned
 Succeeded by LaSalle Post Tribune
 Date Sept 15, 1928
 Succeeded by
 Date

PRODUCTION.

							U. S. No.
19	600 T DAILY						
Last production in Coal Reports is for April 1924							
57							

Geol. Notes? No. Coop. No. Coal secs.? Yes
 Analyses No. 84450-1-2 ~~30-58~~

Examined by CULVER & NELSON BAND Ref.

Coal bed name: Local Survey No. 2
 County La Salle Index No. 2504.22

K.—ACTIVE SHIPPING ~~OR LOCAL~~ COAL MINE.



COAL MINE NOTES.

COUNTY *La Salle*

TOWN *Cedar Point*

MAP No. ~~23104~~ **2504**

T. *33N 32N*

R. *1 E*

S. *4 W 1/2 S W 1/4*

OPERATOR *La Salle County Carbon Coal Co.*

OFFICE *Chicago*

MINE *#5*

TIPPLE

ENGINES

BOILERS

DRUM

SHAFT

CAGE

HAULAGE

CARS

VENTILATION

DRAINAGE

SPRINKLING

WORKING SYSTEM

MINING METHODS

SIZE OF ENTRIES—MAIN

CROSS

ROOM

NECK

SIZE OF PILLARS—MAIN

CROSS

ROOM

SHAFT

CHAIN

BARRIER

AMOUNT OF TIMBERING

SIZE

PROPORTION OF COAL UTILIZED

AMOUNT AND CHARACTER OF WASTE

ACREAGE OF COAL MINED

ACREAGE OF COAL REMAINING

PROPORTION OF MINE RUN AND SCREENED COAL

METHOD OF SIZING

RESCREENED

SIZES

PER CENT

PROPORTION AND SIZE OF WASHED COAL

DAILY OUTPUT

UTILIZATION

MARKETS

FREIGHT RATES

SELLING PRICES AT MINE

~~23104~~ **2504**

COAL LAND OWNED

LEASED

HELD IN FEE

COST OF LAND OWNED

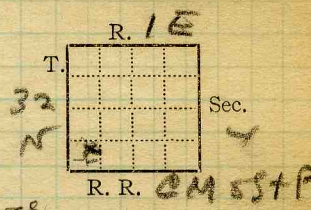
LEASED

HELD IN FEE

ADDITIONAL NOTES



Mine Name or No., *Cedar Point No. 5*
 mile from *at Cedar Point*
 Operator, 191*7*
LaSalle County Carbon Coal Co
 Operator, 191



Entrance, *shaft* Elev., *655* ft. *above, sea level*
 Depth to ~~coal~~ coal, *540* ft. Alt. *115*

SURFACE DATA.

- A. Topography, *upland till plain* See
- B. Surficial materials. (1) Character, *loessial clay + till*
- (2) Thickness, *?* (3) Effect on mining and shaft-sinking, of former drainage lines, underground water strata, etc.

- C. Outcrops, (1) Character, See
- (2) Structure, See
- (3) Fossil horizons, See
- Collection No.,
- (4) Evidences of subsidence, See
- D. Note collection of mine maps, drill records and shaft logs.

See drill record sheet,

- E. Notes on surrounding area,

See

Coal bed name: Local, *Third Vein* Survey No. *2*
 Collector, *Culver + Metzger*
 Mine, *Cedar Point # 5* Co. *LaSalle* Index No. *2504 2B*



- K. (5) Physical character of coal in benches, *all one bench*
- (a) Relative hardness, *rather hard*
- (b) Lustre, *mostly dull & bright, little gloss*
- (c) Fracture, *irregular*
- (d) Texture, *laminated* See
- (6) Impurities in coal, other than bedded,
- (a) Kind, *lenses, balls, facings of pyrite, spar facings*
- (b) Position and persistence, *Common but in no regular position*
- (c) Rejected, *some pyrite* Ease of separation, *difficult.* See
- L. Floor: (1) Material, *clay*
- (2) Thickness, *variable - 1 - 3 feet*
- (3) Variation, *less gritty in places, very hard in some*
- (4) Note character, condition, tendency to heave, relation to undercutting commercial value.
light gray gritty clay, dry - coal is abundant in this clay, sometimes easily after wet.
- See
- (5) Clay sample No. Location,
- M. Stratigraphy,
- (1) Fossiliferous horizons underground, *dark shale 1"-2" thick over the coal has abundant plant remains*
- Collection No. Location,
- N. Notes on effect of deep drilling in coal mine areas.

See

Collector, *Arthur Metzbaum*
 Mine, *Cedar Point #5* Co. *Lg Salle*

Coal: Survey No. *2*
 Index No. *2504-11*



Symbol Description Inches

(1 division = 3 in.)



soapstone.
→ shell, fossiliferous
→ coal

bone and charcoal lens
coal

charcoal parting
coal

soapstone or clay floor

Section ca 12 paces North of face
of main west.

1 1/4
1
37

1/4
6
45 1/2

Collector, *C. L. ...*
Mine, *Cedar Point #5* Co. *La Salle*

Coal: Survey No. *2*
Index No. *2504.11*



Symbol	Description	Inches
	soapstone roof dark gray shale coal bright, w. dull bands, little gloss	1 1/2 19
	pyritic coal lens 1/2" coal as above with more dull	1 15
	dull bony band coal	1/4 4 1/4
	charcoal parting coal clay	1/2 4
	Total	44 0
	Slips at base as shown	
	1 div.	
	Section of coal 2" faces south of face of main east	

(Scale: 1 division = 3 inches).

Sample No.

Can No.

Lab. No.

Collector, *Culver*Coal: Survey No. *2*Mine, *Cedar Point #5* Co. *LaSalle*Index No. *2504.11*

Q.—COAL SECTION SHEET.



Operator, *La Salle County Carbon Coal Co* Date *2/24/22*
 Mine, *Cedar Point (No. 5)* Sec. *4* T. *32N* R. *1E*
 Location in mine, *Face of Main E. 600' S & 2450' E*
of shaft

GRAPHIC SECTION		DESCRIPTION OF SECTION (AT POINT SAMPLED)		
In.	No.	No.	(Note character and thickness of roof)	Inches
<i>1 7/8</i>			<i>Soapstone 18' +</i>	
			<i>Bony coal 1 1/2"</i>	
<i>7 3/8</i>	<i>1</i>	<i>1</i>	<i>Coal</i>	<i>7 3/8</i>
<i>2/8</i>	<i>2</i>	<i>2</i>	<i>Charcoal & pyrite ptg</i>	<i>2/8</i>
		<i>3</i>	<i>Coal</i>	<i>32 1/8</i>
			<i>Light grey floor clay</i>	
			<i>Tape 40"</i>	
<i>32 1/8</i>	<i>3</i>			
(Note character and thickness of floor)				
Total thickness of coal.				<i>40</i>
Condition, <i>Dry</i>		Time, <i>1</i> hr. — min.		
Wt. Gross, <i>19</i> lbs.		Net, <i>4</i> lbs.		
What Nos. shipped by Co.?		<i>All</i>		
Excluded from sample: No. <i>None</i>				
Sample represents <i>40</i> in. tons.				
Impurities? How do they occur? <i>Charcoal lenses & partings, pyrite lenses, calc. & gyp. f. f.</i>				

(1 division = 3 in.)

Sample No. *11-22-18* Can No. *17782* Lab. No. *84450*
 Collector, *Netzeband* Coal: Survey No.
 Mine, *Cedar Point #5* Co. *La Salle* Index No. *2504-11*



Operator, *LaSalle County Carbon Coal Co.* Date *2/24/22*
 Mine, *Cedar Point (#5)* Sec. *4* T. *32N* R. *1E*
 Location in mine, *N of face of Main W* *2300' W 2*
1600' N from shaft

GRAPHIC SECTION		DESCRIPTION OF SECTION (AT POINT SAMPLED)	
In.	No.	No. (Note character and thickness of roof)	Inches
		<i>Soapstone roof</i>	
<i>18</i>	<i>1</i>	<i>1 Coal</i>	<i>18</i>
		<i>2 Charcoal ptg 1/16"</i>	
		<i>3 Coal</i>	<i>23 7/8</i>
<i>1/16</i>	<i>2</i>	<i>Light grey floor clay</i>	
		<i>Tape 41"</i>	
<i>23 7/8</i>	<i>3</i>		
		(Note character and thickness of floor)	
		Total thickness of coal.	<i>41 4/8</i>
		Condition, <i>Dry</i>	Time, — hr. <i>55</i> min.
		Wt. Gross, <i>19</i> lbs.	Net, <i>4</i> lbs.
		What Nos. shipped by Co.?	<i>All</i>
		Excluded from sample: No.	<i>None</i>
		Sample represents	<i>4 1/2</i> in. tons.
		Impurities? How do they occur?	<i>Charcoal partings</i>

(1 division = 3 in.)

pyrite lenses, calc. & gyp. fr.

Sample No. *H-22-19* Can No. *19137* Lab. No. *84451*
 Collector, *Netzelband* Coal: Survey No.
 Mine, *Cedar Point #5* Co. *LaSalle* Index No. *2504.11*



Operator, *LaSalle County Carbon Coal Co* Date *2/24/22*
 Mine, *Cedar Point (#5)* Sec. *4* T. *32N R. 15*
 Location in mine, *5 of face of J.W. 1800' W 2*
1600' S of shaft

GRAPHIC SECTION

DESCRIPTION OF SECTION (AT POINT SAMPLED)

In.	No.	No.	(Note character and thickness of roof)	Inches
			<i>Soapstone</i>	
			<i>Dark shale 1 1/4"</i>	
<i>1 3/8</i>			<i>1 Coal</i>	<i>6 2/8</i>
<i>6 2/8</i>	<i>1</i>	<i>2</i>	<i>Charcoal lens</i>	<i>1/8</i>
<i>1/8</i>	<i>2</i>	<i>3</i>	<i>Coal</i>	<i>35 2/8</i>
			<i>Light gray floor clay</i>	
			<i>Tape 4 1/8</i>	
<i>35 3/8</i>	<i>3</i>			
(Note character and thickness of floor)				
Total thickness of coal.				<i>4 1/8</i>

Condition, *Dry* Time, *—* hr. *55* min.
 Wt. Gross, *18* lbs. Net, *7* lbs.
 What Nos. shipped by Co.? *All*

Excluded from sample: No. *None*
 Sample represents *4 1/8* in. tons.

Impurities? How do they occur? *Charcoal lenses, calcite & gypsum fracture fillings*

(1 division = 3 in.)

Sample No. *N-22-20* Can No. *01070* Lab. No. *84452*
 Collector, *Netzband* Coal: Survey No.
 Mine, *Cedar Point #5* Co. *LaSalle* Index No. *2504-11*