

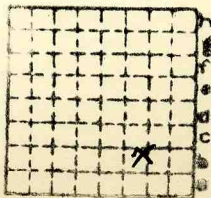


Form 180

OTTAWA MNG Co.

L-98

✓ Mine index 2686



Sec. 1

T.	33	N.
R.	3	E.
Index No.		



Mine originally operated by: (1) *Ottawa Mining Co.*

Date  
1939

Original name or number:  
Illinois Coal Report 1939 p.

LATER OPERATORS

Date	Operator	Name or No.
2 <i>1940, 1941, 1942</i>		
3		
4		
5		
6		
7		
8		
9		
10		
11		
12		
13		
14		

\*Also owners

#See ownership sheet

Railroad, Wagon, Strip, Idle, Abandoned

IDENTIFICATION

County No. \_\_\_\_\_

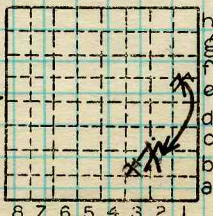
Coal No. 2

Coal Report No. L-98



Quad. 61

County LaSalle



Sec.	<u>21</u>
T.	<u>33</u> N.
R.	<u>3</u> E.
Index No.	<u>W.</u>

COAL MINE OPERATOR

0801BR



Ottawa

COAL PRODUCTION

( Sheets )

( Sheet )

Period				Tons		
Mo.	Day	Year	Mo.	Day	Year	
1939						6 266
1940						15 261
1941						16 245
1942						15 341
1943						7 415
1944						Idle

SUMMARIES

No. to No.

--	--	--	--	--	--	--

Railroad, Wagon, Strip, Idle, Abandoned

Sec. 1

IDENTIFICATION

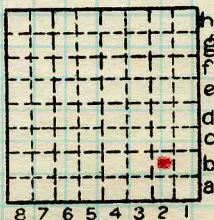
County No. \_\_\_\_\_

Coal No.

Coal Report No. L-98

Quad. 61

County LaSalle



T. 33 N.

R. 3 E.

Index No.

COAL MINE—PRODUCTION

0801 B2



Location and Elevation Data

Location: Exact Approximate  
(Approximate only if no trace of record of original exists)

Location by Willman on topog. map

Date 1941 Notebook No. Page

Looseleaf ref.

Map files No.

Description of Location

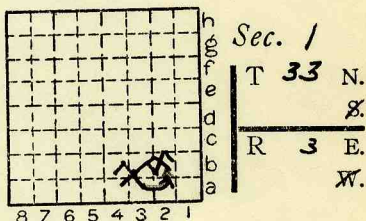
Position in sec., 1/4 sec., 40 acres

feet from North line

feet from East line

feet from South line

feet from West line



Other description: L-98

1940. given location in B2.

Farm

No.

Company Ottawa Mining Co.

No.

County No.

1940 Prod. 15, 261

Elevation ft.

By

Method: Level, transit, alidade, hand level

Elevation of

Height of point above ground

Date Notebook P.

Looseleaf ref.

Map files No.

Description of item: (drill hole, mine, etc.) Strip Mine

18" to 24" of #2 coal

County Lasalle Quadrangle Ottawa Index No. 0801 B2

(50167-5M-2-38) 2 (61) B2