

Form 180 Blue

9744

Baker Coal Co.

ISMS: 3827

Sec. 17
SE SW SW
T 19 N
R 12 W
*E from following page 3
-cc 2002*

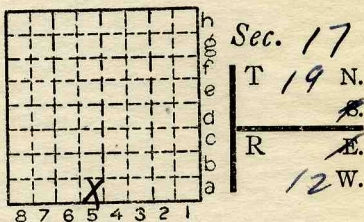


Location and Elevation Data

Location: Exact Approximate
 (Approximate only if no trace of record of original exists)
 Location by ABD MINES BOOK
 Date no microfilm map Notebook No. Page
 Looseleaf ref.
 Map files No.

Description of Location

Shaft: Position in sec., 1/4 sec., 40 acres
 feet from North line
 feet from East line
 ~ 280' feet from South line
 ~ 1100' feet from West line
 (this is from a postal map of Danville Area - shows coal mines)
 Other description:



Farm
 No.
 Company Baker Coal
 No.
 County No. 655

Elevation ~ 625' ETM ft.
 By DTC: ~ 130' C.T. = 6' No. 7 Coal

Method: Level, transit, alidade, hand level

Elevation of
 Height of point above ground
 Date Notebook P.
 Looseleaf ref.

Map files No.
 Description of item: (drill hole, mine, etc.) No. 7 Coal NOT USED
D. 130' ABD
 County VERMILION Quadrangle 149 Index No. 1817 AS



Mine originally operated by: (1)

Baker Coal Co.

Date

Original name or number:

Illinois Coal Report

p.

LATER OPERATORS

Date

Operator

Name or No.

2

3

1894 - 1908

4

5

19,650 total tons

6

7

8/25/88

8

J.D.M.

9

10

11

12

13

14

* Also owners

#See ownership sheet

Railroad, Wagon, Idle, Abandoned

LOCAL MINE

IDENTIFICATION

County No.

Coal No. 7

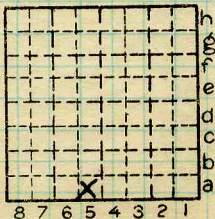


Part

Quad.

County

VERMILION



Sec. 17

T. 19 N. St.

R. 12 E. W.

Index No.

COAL MINE OPERATOR

COUNTY NO.

1817A5