



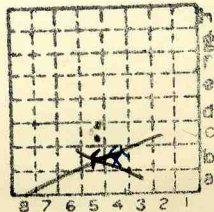
Form 180

Bullock 99-39

Burnwell EC

Sl.

140



Sec. 27

T. 3 ~~8~~

R. 8 ~~8~~

Index No.

✓ Mine index 766



Mine originally operated by: (1)

Date **Bullock Bros.**  
**1898** (local)

Original name or number:  
Illinois Coal Report **1898** p.

LATER OPERATORS

Date	Operator	Name or No.
2 1918	Bullock Mining Co.	
3 1938	Burnwell coal Co. <i>% Peter McKeown</i>	Burn Well
4		
5 1942	Burn-Well Coal Co	Burn Well
6		
7		
8		
9		
10		
11		
12		
13		
14		

*Abd?  
May 1945*

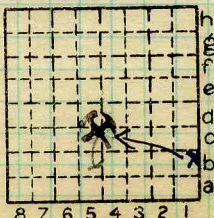
\* Also owners #See ownership sheet

Railroad, Wagon, Idle, Abandoned **Active Shaft**

**C.C.C. & St. L.** *May 1945*  
IDENTIFICATION

County No. **140**  
**S-1 Belleville**  
Quad. **226**

Coal No. **6**  
 Part **3**



Sec. **27**

T. **3** N.  
R. **8** W.

Index No.

**1827 b4**

County **Madison**

COAL MINE OPERATOR

*mine map Q5*



( Sheets ) COAL PRODUCTION ( Sheet )

No.	Period						Tons	
	Mo.	Day	Year	Mo.	Day	Year		
						1935		#1
						1927	58	563
						1931	36	600
						1932	26	624
1	1	1	1936	12	31	1936	37	524
1	1	1	1937	12	31	1937	31	039
						1939	25	760
						1940	24	846
S-1	1	1	1941	12	31	1941	13	150
S-1			1942				14	998
			1943				39	900
			1944				32	500
	1	1	1945	5		1945	6	900

SUMMARIES

No.	to	No.		
1898		1935	896	499

Railroad, Wagon, Idle, Abandoned

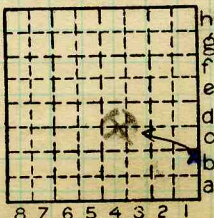
IDENTIFICATION

County No. 140 Coal No. 6

8-1 Belleville

Quad. 226 Part 3

County Madison



Sec. 27

T. 3 N.

R. 8 W.

Index No. 1827 b4



LOCATION AND ELEVATION

Location: J.C. Quade side R. R.  
 field notes W side spur of Pennsylvania R. R.  
 side Highway No.

on top. map Yes Location sheet ✓

Elevation: Method, 1. Est. (Topographic) ft. 500  
 2. Inst. (kind) ) ft.

By E.T.B Data sheet

DEPTH

Authority J.C. Quades To coal 163 ft.  
 Authority Rail to rail ft.  
 Top of coal above rail. (Est. Rule) ft.  
 To coal 165 ft.

ALTITUDE OF TOP OF COAL

By estimated data 337 ft.  
 By instrumental data ft.

Thickness

Max. in. Min. in. Aver. 84 in.

GEOLOGICAL DATA

Mine notes, date None

Coop No. Pyr. inv. Coal Ash inv.

CHEMICAL DATA

Analyses Face	U. I.	B. M.	Others
Car	U. I.	B. M.	Others
Org. Sulf	U. I.	B. M.	Others
Ash fusion	U. I.	B. M.	Others
Ash anal.	U. I.	B. M.	Others
	U. I.	B. M.	Others

Classification

Misc. tests: Coking. Cleaning Boiler

Published descriptions:— None

Railroad, ~~Wagon, 1886, Abandoned~~ MENESE

IDENTIFICATION

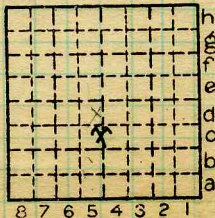
County No. 226 140

Coal No. 6



Part 3

Quad. Belleville (226)  
 County Madison



Sec. 27

T. 3 N.

R. 8 W.

Index No.

1827.54

COAL MINE LOCATION AND DATA