



Form 180

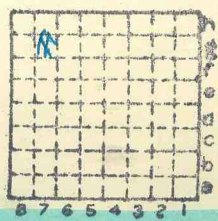
*Buxton draft*

Edgewant CC

R. F

HERRIN

371.



Sec. 35  
 T. 2 N. 5  
 R. 9 E. W.  
 Index No.

Mine Index 3613



Mine originally operated by: (1)

Date

**Edgemont Coal Co**  
L-17

Original name or number:

Illinois Coal Report

p.

LATER OPERATORS

Date

Operator

Name or No.

2 1930

**Edgemont Coal Co**

3

4

5

6

7

8

9

10

11

12

13

14

\* Also owners

#See ownership sheet

Railroad, Wagon, Idle, Abandoned **Drift**

**LOCAL MINE**

IDENTIFICATION **L-17**

County No. **371**

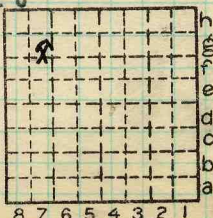
Coal No. **6**



Quad. **French Village**

Part **5**

County **St. Clair**



Sec. **35**

T. **2** N. **2**

R. **9** W. **2**

Index No.

**0435-7g**

**L**

COAL MINE OPERATOR



( Sheets) COAL PRODUCTION (Sheet )

Period						Tons		
Mo.	Day	Year	Mo.	Day	Year			
1	1	1930	12	31	1930	49	599	
		1931				34	096	
		1932				20	064	
		1933				17	873	
		1934				16	709	
		1935				15	603	

SUMMARIES

No.	to	No.			

Railroad, Wagon, Idle, Abandoned

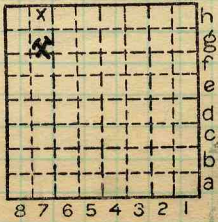
IDENTIFICATION L-17

LOCAL MINE

County No. 371 Coal No. 6

Quad. Fr. Village Part 5

County St Clair



Sec. 35

T. 2 N.

R. 9 W.

Index No.

0435 79

COAL MINE—PRODUCTION



LOCATION AND ELEVATION

Location: side R. R.  
side R. R.

**E** side Highway No. 157

on top. map **225d** Location sheet **13-87-44b**

Elevation: Method, 1. Est. ( ) ft. **462.3**  
2. Inst. (kind **Plane table**) **6** ft.

By **W. B. Roe** **11-4-30** Data sheet

DEPTH

Authority To coal **80** ft.  
Authority Rail to rail \_\_\_\_\_ ft.  
Top of coal above rail. (Est. Rule) \_\_\_\_\_ ft.  
**Alt. on bottom of bed** To coal **140 6+** ft.  
1938  
1939

ALTITUDE OF TOP OF COAL

By estimated data \_\_\_\_\_  
By instrumental data **468** ft.

Thickness

Max. in. Min. in. Aver. **67** in.

GEOLOGICAL DATA

Mine notes, date \_\_\_\_\_

Coop No. Pyr. inv. Coal Ash inv.

CHEMICAL DATA

Analyses Face U. I. B. M. Others  
Car U. I. B. M. Others  
Org. Sulf U. I. B. M. Others  
Ash fusion U. I. B. M. Others  
Ash anal. U. I. B. M. Others  
U. I. B. M. Others

Classification

Misc. tests: Coking. Cleaning Boiler

Published descriptions:—

Railroad, Wagon, Idle, Abandoned **Drift**

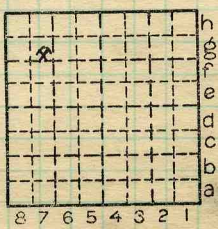
**LOCAL MINE**

IDENTIFICATION

County No. **371** Coal No. **6**

Part **5**

Quad. **French Village**  
County **St Clair**



Sec. **35**  
T. **2** N.  
R. **9** W.  
Index No.

**0435-7g**

COAL MINE LOCATION AND DATA

**L**



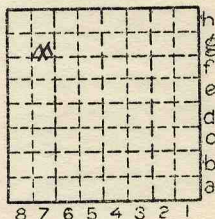
Location and Elevation Data

Location: Exact Approximate  
 (Approximate only if no trace of record of original exists)  
 Location by W.B.R.  
 Date 1930 Notebook No. \_\_\_\_\_ Page \_\_\_\_\_  
 Looseleaf ref. \_\_\_\_\_  
 Map files No. 13-87-44b

Description of Location

Position in sec., 1/4 sec., 40 acres

\_\_\_\_\_ feet from North line  
 \_\_\_\_\_ feet from East line  
 \_\_\_\_\_ feet from South line  
 \_\_\_\_\_ feet from West line



Sec. 35  
 T 2 N.  
 S.  
 R E.  
 9 W.

Other description: L-12  
 \_\_\_\_\_  
 \_\_\_\_\_

Farm \_\_\_\_\_  
 No. \_\_\_\_\_  
 Company Edgemont Coal Co.  
 \_\_\_\_\_  
 No. \_\_\_\_\_  
 County No. 371

12109  
 Elevation 462.3 ft.  
 By W.B.R.

Method: Level, transit, alidade, hand level  
PT

Elevation of \_\_\_\_\_  
 Height of point above ground \_\_\_\_\_  
 Date \_\_\_\_\_ Notebook \_\_\_\_\_ P. \_\_\_\_\_  
 Looseleaf ref. \_\_\_\_\_

Map files No. \_\_\_\_\_  
 Description of item: (drill hole, mine, etc.) Drift Mine

County St. Clair Quadrangle French Village Index No. 0435 67



Location and Elevation Data

Location: Exact Approximate

(Approximate only if no trace of record of original exists)

Location by A. E. Spathe

Date 7/23/40 Notebook No. 637 Page 25 <sup>17</sup>

Looseleaf ref. \_\_\_\_\_

Map files No. 13-87-61

Description of Location

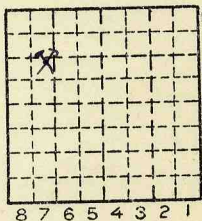
Position in sec., 1/4 sec., 40 acres

\_\_\_\_\_ feet from North line

4250 feet from East line

3900 feet from South line

\_\_\_\_\_ feet from West line



Sec. 35  
 T 2 N.  
 S  
 R E  
 9 W.

Other description: Frazar Map

Seniar Mines (1928) supplied by T. A. Scully - (returned) Mine called "Buxton Drift."

5'7" Coal; elev. 466'

Farm \_\_\_\_\_

No. \_\_\_\_\_

Company Edgemont Coal Co.

No. \_\_\_\_\_

County No. 371

Elevation 460.35 ft. → 466

By A. E. S.

Method: Level, transit, alidade, hand level

Elevation of Bottom of coal

Height of point above ground \_\_\_\_\_

Date 7/23/40 Notebook 637 P. 25 <sup>17</sup>

Looseleaf ref. \_\_\_\_\_

Map files No. 13-87-61

Description of item: (drill hole, mine, etc.) Drift Mine

County St. Clair

Quadrangle Fr. Village  
(225) d

Index No. 0435 F7