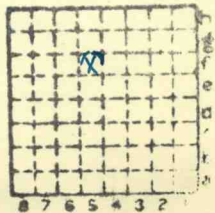


MI4102

511



Sec. 26

T. 9

R. 4

Index No.



Mine originally operated by: (1)

Date

Original name or number:

Illinois Coal Report p.

LATER OPERATORS

Date Operator Name or No.

2
3
4
5
6
7
8
9
10
11
12
13
14

See notes by G.M. Cady, 1925,
in ISGS public field notes,
where he describes an old
strip mine in the Harris Coal
at this location.

* Also owners

#See ownership sheet

Railroad, Wagon, Idle, Abandoned Strip

IDENTIFICATION

County No. 511

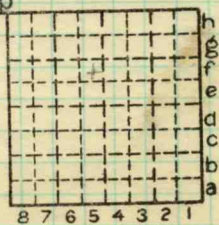
Coal No.

6

Quad. Harrisburg

Part

County Williamson*



Sec. 26

T. 9 N. S.

R. 4 E. W.

Index No. 0826 f5

COAL MINE OPERATOR



LOCATION AND ELEVATION

Location: side R. R.
side R. R.
side Highway No.

on top. map Location sheet

Elevation: Method, 1. Est. () ft.
2. Inst. (kind F) 470 ft.

By Data sheet
DEPTH
Authority To coal ft.
Authority Rail to rail ft.
Top of coal above rail. (Est. Rule) ft.
To coal ft.

ALTITUDE OF TOP OF COAL
By estimated data
By instrumental data 470 ft.

Thickness
Max. in. Min. in. Aver. 48 in.

GEOLOGICAL DATA

Mine notes, date
Coop No. Pyr. inv. Coal Ash inv.

CHEMICAL DATA

Analyses Face U. I. B. M. Others
Car U. I. B. M. Others
Org. Sulf U. I. B. M. Others
Ash fusion U. I. B. M. Others
Ash anal. U. I. B. M. Others
U. I. B. M. Others

Classification

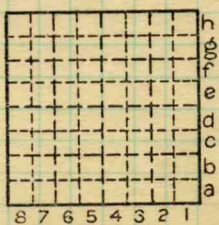
Misc. tests: Coking. Cleaning Boiler

Published descriptions:—

Railroad, Wagon, Idle, Abandoned Strip

IDENTIFICATION

County No. 511 Coal No. 6
Quad. Harrisburg Part
County Williamson



Sec. 26
T. 9 N.
R. 4 E.
Index No. 0826 f5

COAL MINE LOCATION AND DATA