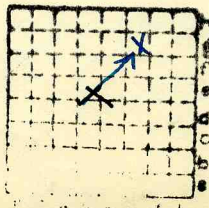


2088



Form 180

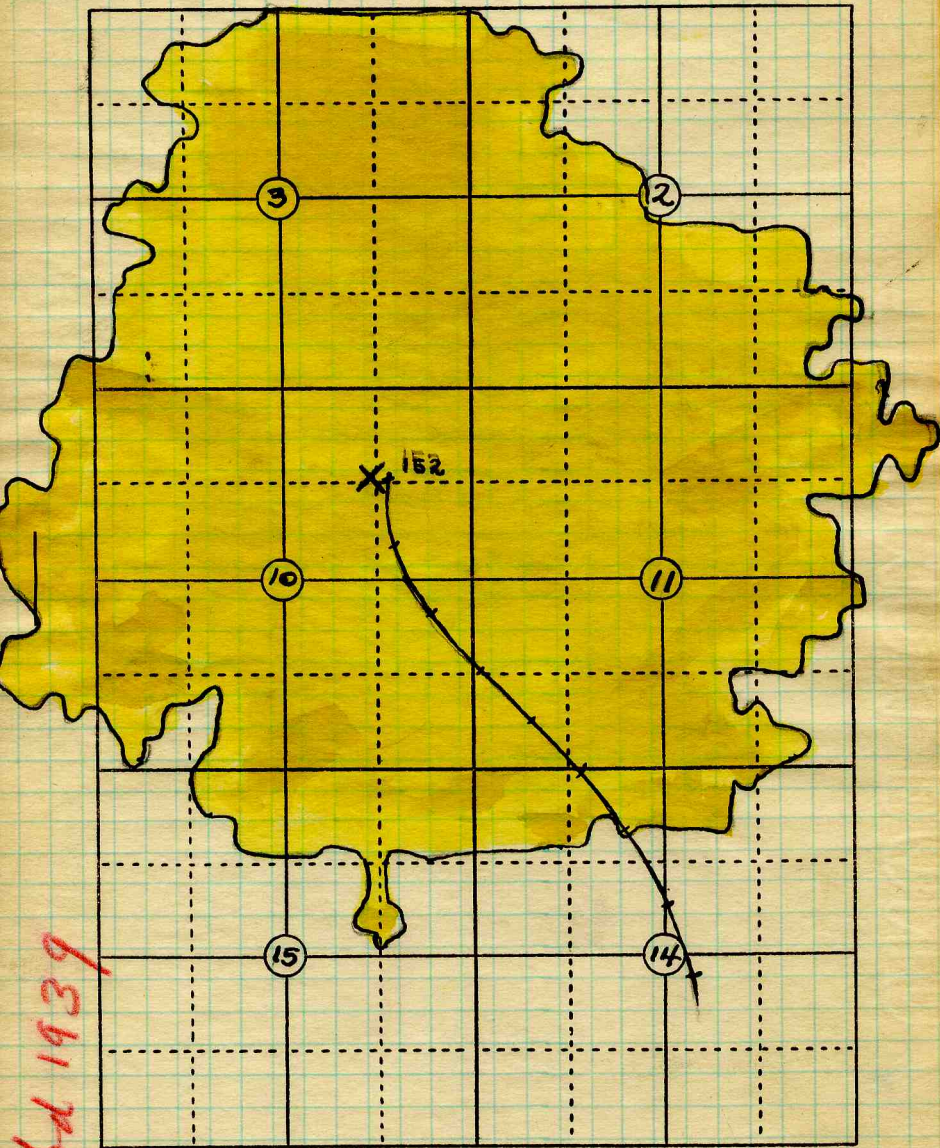
IND. & ILL. Coal Co.  
S-2 152  
Mi. # 194



Sec. 10  
T. 10 N. S.  
R. 2 E. W.

Index No.  
0610 93

✓



abd 1939

TION R2W.

Date 1-20-34. Map Operator Name or No. 10

County Montgomery Ind. & Ill. Coal Co. Index No. 0610.g3





STATE GEOLOGICAL SURVEY.

Montgomery

COUNTY

Mine Location *Nokomis*

TOWNSHIP

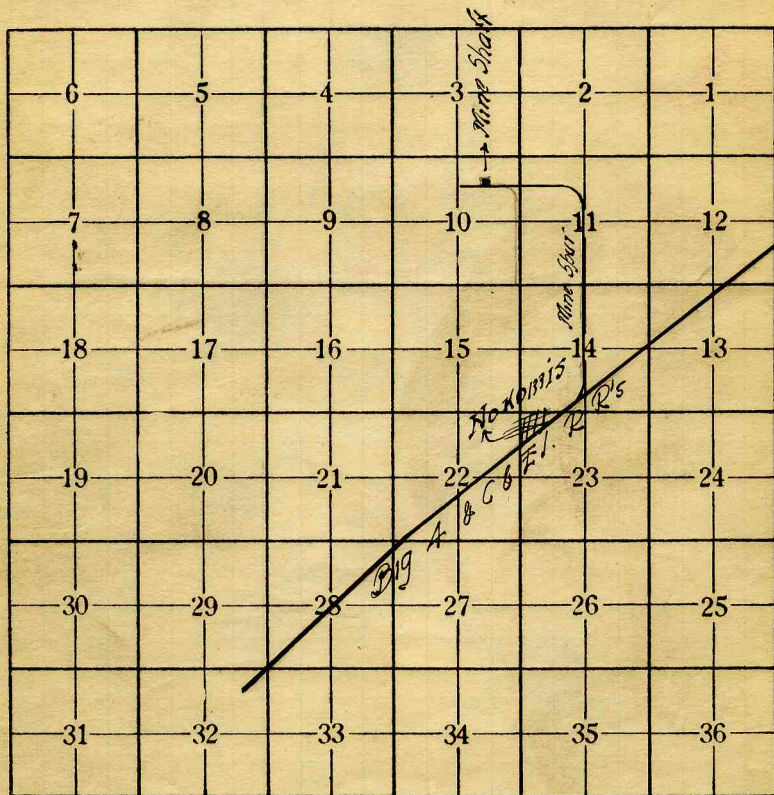
*10 North*

RANGE

*2 West*

0610

USED IN COOP. REPT. 1912.



Operator *Peabody Coal Co. #10*  
 Office address *332 S. Michigan av. Chicago*  
 Mine name or number *Nokomis*  
 Surface at mine is *667* feet above sea level or about  
*667* feet (above) (below) railroad station at *Nokomis*  
 Depth to bottom of coal is *638* feet  
 Average thickness of coal is *8.0* feet *6* inches

Kindly note changes in name and address.

USED IN COOP. REPT. 1912.

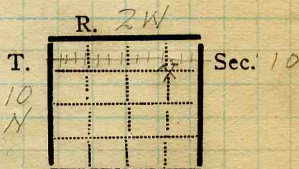
✓  
 Montgomery  
 0810  
 0610





Town, *Nokomis* Surface alt., *663* ft.  
 Local Authority, *H. Stephanson* Depth to coal, *640* ft.  
*Electrician* Alt. top coal, *23* ft.  
 Level: Auth., *Preston Crowell Jr.* Thickness: Av. *96* in.  
*Engr.* Max. *126* in., Min. *in.*  
 Method, *Engr's. Notes.*

R. R., *C.C.C. & St. L.*



Location: authority, *Mine map in office*

(Show R. R.)

Operator

Mine Name or No.

1921 *Indiana & Illinois Coal Corp.* *No. 10.*

Successor to

Date

Succeeded by

Date

Succeeded by

Date

**PRODUCTION.**

									U. S. No.
1921			<i>2400 ton daily</i>	<i>Hrs.</i>					
		<i>J. J. Fries</i>	<i>M. Mgr.</i>						

Geol. Notes? *Yes* Coop. No.

Coal secs? *3*

Analyses No.

Examined by *Natzband*

Ref.

Coal bed name: Local

Survey No. *6*

County *Montgomery*

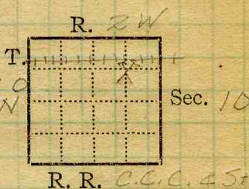
Index No. *0610.77*

**K.-ACTIVE SHIPPING OR LOCAL COAL MINE.**





Mine Name or No., *No. 10*  
*2* mile *N* from *Nokomis*  
Operator, 191*1* *Indiana Illinois Coal Corp*  
Operator, 191



Entrance, *shaft* Elev., *663* ft. *above,* *sea level*  
*below;*  
Depth to ~~surface~~ coal, *640* ft. Alt. *23*

SURFACE DATA.

- A. Topography, *Flat* See
- B. Surficial materials. (1) Character, *tilt*
- (2) Thickness, *No information* (3) Effect on mining and shaft-sinking, of former drainage lines, underground water strata, etc. *No information*

- C. Outcrops, (1) Character, See
- (2) Structure, See
- (3) Fossil horizons, See
- Collection No.,
- (4) Evidences of subsidence, See
- D. Note collection of mine maps, drill records and shaft logs.

See drill record sheet,

- E. Notes on surrounding area,

See

Coal bed name: Local, Survey No. *6*

Collector, *Netzeband*

Mine, *Inde Ill. Corp #10* Co. *Montgomery* Index No. *0610:77*





- F. Thickness of rock above bed worked, *No information*  
 (1) Important variations, See
- G. Note presence of strata having important effect on mining, See  
*Black shale above coal, bad roof*  
 (1) Position, *Above coal*  
 (2) Character, *Black, well bedded to massive*  
 (3) Persistence, *Thruout mine*  
 (4) Other workable coal beds, *No information* See

- H. Cap rock, *Limestone*  
 (1) Thickness, *6-8' Max. unknown*  
 (2) Height above coal, *1" to 7"* See

- I. Immediate roof, *Black shale*  
 (1) Thickness, *1" to 7'* (2) Contact with coal, *clean regular*  
 (3) Horizontal variation, *Changes from well bedded to massive* See XI

- J. Draw slate. (1) Thickness, *None* (2) Contacts  
 (3) Persistence,

- K. Coal bed: Max. *126* Min. *72* Av. *96* inches  
 (1) Benches, *Two*  
 (a) Position, *Above & below B. B.*  
 (b) Persistence, *Thruout mine* See

- (2) Bedded impurities, kind, position in benches, persistence, ease of separation. *B. B. lenticular in character, grey shale; charcoal bands & lenses;* See  
 (3) Irregularities in continuity of bed (due to deposition, erosion, or movement, *A few small slips* See  
 (a) Effect on mining, *No affect.* See

SECTION				
Ft.	fn.	Name	Color	Sym.
8		Limestone		
7		Black sh.		
8		Coal		
6		Floorclay		
		1 Dir = 4'		





## K. (5) Physical character of coal in benches,

(a) Relative hardness, *Very much harder than Bellerille district, especially in the South.*

(b) Lustre,

(c) Fracture, *hackly cleat not well developed.*(d) Texture, *Laminated*

See

(6) Impurities in coal, other than bedded,

(a) Kind, *Pyrite lenses (1/16 - 1/2) calcite or gypsum* [fracture fillings](b) Position and persistence, *Above blueband; throat mine.*(c) Rejected, *above 1/4*Ease of separation, *Breaks free**Miners reject anything above 1/4"*

See

L. Floor: (1) Material, *Floor clay*(2) Thickness, *6" to > 6" No information as to maximum.*(3) Variation, *Varies vertically - 3-4" Dark, hard shale with many fragments of plant remains, rest light green-grey shale.*(4) Note character, condition, tendency to heave, relation to undercutting commercial value. *Dark grey to light green-grey shale,**has some slips, many fragments of plant remains, heaves a little on north side of bottom; used to undercut upon; value unknown.*

See

(5) Clay sample No.

Location,

## M. Stratigraphy,

(1) Fossiliferous horizons underground, *Clod between 15 & black sh.; cap rock; floor clay.*

Collection No.

Location,

## N. Notes on effect of deep drilling in coal mine areas.

See

Collector, *Netzeband*Coal: Survey No. *6* Mine, *Ind & Ill. Corp. #10 Co. Montgomery*Index No. *0610-77*





INDEX

(36713-500-7-20)

13 Slip in Room 5, 12<sup>th</sup> N, 15<sup>th</sup> W. N.  
Trends N, S. Displacement of coal 3"

Collector

*Netzeband*

Index No.

*0610.77*

X- /

EXTRA NO. *1*

County

*Montgomery*





Mine Ind. 4. 10  
 3 4 4 4 4 4 4 4  
 3 4 4 4 4 4 4 4  
 M/N

I<sub>3</sub> USW The usual roof in the mine is black shale which is called "slate" by the miners. This varies in thickness from 6' to a feather edge. In the Main South, the Limestone rests directly upon the coal.

In some places they leave from 18" to 24" of top coal for roof.

In the 4<sup>th</sup> W there was a fall showing black shale about 3' in thickness. Above this there was a gray shale very fossiliferous, about 6' thick.

The shale-limestone contact is very uneven. The coal-shale contact is fairly level. The varying thickness of shale indicates an erosional surface.

The lime forms the roof at the partition on the Main S. About 600' farther there is 6' of shale. The shale almost feathers out again at the face.

M/N This holds true all over the mine. In the N, the shale is from 18" to 30" thick.

The shale makes a very satisfactory roof, but requires timbering.





259693

Aug. 20, 1921

3rd No. 5

Black shale		
1	Coal (left as roof) 17pp 18"	
2	Coal bright, calcite, fract. fillings	8 1/4
3	Pyrite	3/4
4	Coal	6
5	Pyrite	1/2
6	Coal	18
7	Pyrite	1/2
8	Coal	4
9	Pyrite	1/8
10	Coal	17
11	Pyrite	1/8
12	Coal	4 3/4
13	Bony coal	3/4
14	Coal	9 1/4
15	Shale	3/8
16	Coal	1
17	Grey shale	3/4
18	Coal	9 3/4
	} B.B.	
	Tape #1	8 1/2

Time 6 hrs 19 min 14 49  
8:30  
 Condition - Damp, fresh  
 Weight 34  
 Excluded 1, 3, 5, 7, 15, 16, 17

F-21-22

Can No. 837

# 81101





259693

Aug 20, 1921

Face of Main N

Black shale	
1 Coal (left as roof)	App 14'
2 Coal	15 1/2
3 Pyrite band	1/8
4 Coal	11
5 Pyrite lens	1/8
6 Coal	11 1/2
7 Charcoal band	11 1/4
8 Coal	16 1/4
9 Pyrite	1/8
10 Coal	2 1/4
11 Pyrite	1/8
12 Coal	6 1/2
13 Gray shale B.B.	2 1/2
15 Coal	1 3/4
16 Charcoal	1/2
17 Coal	16 3/4
	84 1/2
	84 5/8

337

Time 2 hrs 10 min  
 Condition - Dry - fresh  
 Weight 31#  
 Excluded - 1, 13

1127

NS1103

T-21-24

Can No - 923

Ind. & Ill Corp \*10

Montgomery

0610.77





259693

Aug. 20, 1921

3rd. E. S.

Black shale

1 Coal (left as roof)	App 18 <sup>1/2</sup>	
2 Coal bright, a few cakita f.f.	12	3/4
3 Pyrite		1/8
4 Coal	7	1/4
5 Charcoal lens		1/2
6 Coal	2	3/4
7 Charcoal lens		1/2
8 Coal	6	1/8
9 Pyrite		1/8
10 Coal	11	1/4
11 Pyrite		1/8
12 Coal	11	3/4
13 Charcoal		1/2
14 Coal	9	3/4
15 Pyrite		1/8
16 Coal	16	1/4
17 Pyrite & bone coal	BB?	1/4
18 Coal	10	
Tape	92	1/4
		92 3/8

Time 3 hrs 25 min  
 Condition - Dry, fresh  
 Weight 41<sup>2</sup>  
 Excluded - 1,  
 T-21-23

1463  
 11:38  
 3:25

Can No 17718

# 81102  
 Ind & Ill. Corp. #10 Montgomery 0610.77