



Form 180 Blue

COAL 30' DEEP
COAL 3' THICK
FROM 1960 M + M REPORT

STRIP MINE

H. K. Porter Co., Inc.

~~(Chi. PORTER & Firebrick Co.)~~

~~Laclede Christy Co.~~

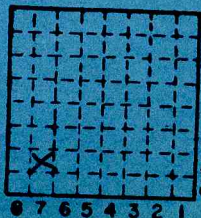
Div #102

COUNTY No. 338

L-7

Mine Indep 2693

LASALLE County



Sec. 5
T. 33 N.
R. 4 E.
Index No. W.



Mine originally operated by: (1)

CHICAGO RETORT FIRE BRICK
OTTAWA

Date 1883, L-7

Original name or number: *Strip clay & coal.*
 Illinois Coal Report P. *operator's report 1948*

LATER OPERATORS

Date	Operator	Name or No.
2	1913 C.R.F.B.Co	
3	1914 Ab'd'a	J.C. Qode
4	1913 Re-opened	
5	1939 Open	
6		
7	1946 Chicago Retort + Fire Brick Co.	
8	1952 Laclede-Christy Co	72551
9	1954 Chicago Retort + Fire Brick Co.	
10	1956 Laclede Christy Co.	
11	1959 H.K. Porter Coy, Inc	
12		
13		map shows stripping in NW 1/4, SW 1/4 Sec 5
14	NENESW (1948)	4103 L32 15.1-3 1-7-82

* Also owners # See ownership sheet

Railroad, Wagon, Idle, Abandoned Strip

25' (1948) overburden

LOCAL MINE

IDENTIFICATION L-7

County No. 238

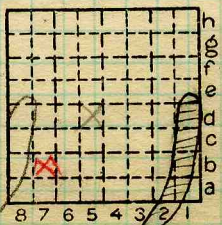
Coal No. 2

Quad. 61.

Part 6.

County LAPSALLE

(1948) 2'0"



Sec. ~~33~~ +5
 T. 33 N.
 R. 4 E.
 Index No.

COAL MINE OPERATOR

1906 #07
1905 B7



(Sheets) COAL PRODUCTION (Sheet)

Period			Tons
Mo.	Day	Year	
1939			4 250
1940			5 388
1941			7 355
1942			8 804
1943			8 405
1944			3 500
1945			5 777
1946			7 123
1948			7 255
49			6 112
50			3 088
51			2 753
52			2 388
1953			2 365
1954			2 196
1955			2 268
1956			3 203
1957			7 345
1958			1 324
1959			1 568
1960			885
Idle Oct 1960			

SUMMARIES

No. to No.

Railroad, Wagon, Strip, Idle, Abandoned *Strip*

Sec. 5

IDENTIFICATION L-7

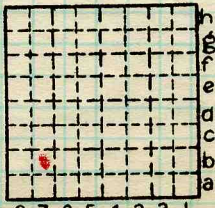
County No. _____

Coal No.

Coal Report No. L-7

Quad. 61

County _____



T. 33 N.

R. 4 E.

Index No.

LaSalle

COAL MINE—PRODUCTION

1905 B7





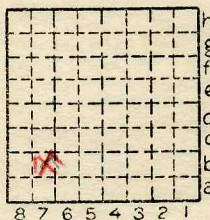
Location and Elevation Data

Location: Exact Approximate
(Approximate only if no trace of record of original exists)
Location by Correspondence, C. Van Schaick, Mine In.
Date 2/13/42 Notebook No. Page
Looseleaf ref.
Map files No.

Description of Location

Position in sec., 1/4 sec., 40 acres

feet from North line
feet from East line
feet from South line
feet from West line



Sec. 5
T 33 N.
R 4 E.
W.

Other description: L-7
Mine in SW 1/4 of SW 1/4
Does not operate a
tipple, consuming own
coal as mine run.

Farm
No.
Company Chicago Retort
& Fire Brick Company
No.
County No.

1941, 1942

1940-5388

Elevation ft.

By

Method: Level, transit, alidade, hand level

Elevation of

Height of point above ground

Date Notebook P.

Looseleaf ref.

Map files No.

Description of item: (drill hole, mine, etc.) Strip Mine

25' - 2' of #12 coal D.M.M.

County La Salle Quadrangle Ottawa Index No. 1905 B7

See active local book.

HK Porter Co. Inc.

~~Laclade Christy Co.~~

L-7 County No. 238

Div. # 102

mine index 2693

LA SALLE County

	h
	g
	f
	e
	d
	c
	b
	a
6	7
6	5
4	3
2	1

Sec. 5

T. 33

R. 4

Index No.