

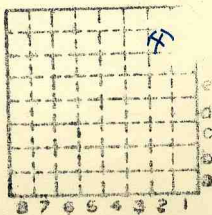


Form 180

Perry CC

Mine Index 2906

267



Sec.	7
T.	8 <del>9</del>
R.	6 <del>7</del>
Index No.	W.





Mine originally operated by: (1)

Ferry Coal Co. Kimberl  
Gillespie.

Date 1923

Original name or number:

OLD HENDERSON

Illinois Coal Report

p.

LATER OPERATORS

Date

Operator

Name or No.

2

W. VA. COAL CO.

3

4

5

6

7

8

9

10

11

12

13

14

\* Also owners

# See ownership sheet

Railroad, Wagon, Idle, Abandoned

SHIPPING MINE

IDENTIFICATION

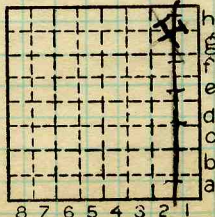
County No. 267

Coal No.

Quad. 200 (Gillespie)

Part 6

County Macoupin.



Sec. 7

T. 8 N.

R. 6 W.

Index No.

1707.2

COAL MINE OPERATOR





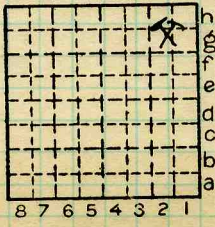
( Sheets) COAL PRODUCTION (Sheet )

Period						Tons
Mo.	Day	Year	Mo.	Day	Year	

SUMMARIES		
No.	to	No.

Railroad, Wagon, Idle, Abandoned  
IDENTIFICATION

County No. *267* Coal No. *6*  
Quad. *200* Part *6*  
County *Macoupin*



Sec. *7*  
T. *8* N.  
R. *6* W.  
Index No.  
*1707.28*





LOCATION AND ELEVATION

Location: side C.C.C. & St. Louis R. R.
by P.S.M. side C. & N.W. R. R.
in field side Highway No.
on top. map Location sheet

Elevation: Method, 1. Est. ( ) ft.
2. Inst. (kind Hand Level) 663 ft.
By PSM Data sheet

DEPTH

Authority 1924 Coal Rept., p. 78 To coal
Authority gives depth of shaft as 1386' Rail to rail
Depth to Coal about Top of coal above rail. (Est. Rule) 377 ft.
To coal

ALTITUDE OF TOP OF COAL

By estimated data
By instrumental data 286 ft.

Thickness

Max. in. Min. in. Aver. 108 in.

GEOLOGICAL DATA

Mine notes, date
Coop No. Pyr. inv. Coal Ash inv.

CHEMICAL DATA

Table with 4 columns: Analyses Face, U. I., B. M., Others. Rows include Car, Org. Sulf, Ash fusion, Ash anal.

Classification

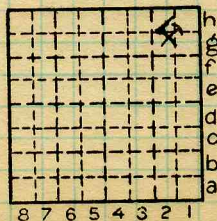
Misc. tests: Coking. Cleaning Boiler

Published descriptions:—

Railroad, Wagon, Idle, Abandoned

IDENTIFICATION

County No. 267 Coal No. 6
Quad. 200 Part 6
County Macoupin



Sec. 7
T. 8 N.
R. 6 W.
Index No.

COAL MINE LOCATION AND DATA

1707.23