



Form 180 Blue

Dering Coal Co. No. 3

County No. 662

Mine Index 3670

8	7	6	5	4	3	2	1		

Sec. 23 E2
 T. 18 N.
 R. 12 W.
 Index No.

✓



Location and Elevation Data

Location: Exact Approximate
(Approximate only if no trace of record of original exists)

Location by.....

Date..... Notebook No..... Page.....

Looseleaf ref.....

Map files No. 14-92-43 (in Coop mine Bull. #14)

Description of Location

Position in sec., 1/4 sec., 40 acres

..... feet from North line

1110 feet from East line

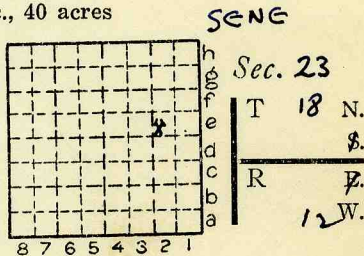
2860 feet from South line

..... feet from West line

~~Mexonater~~ Nicholson

Other description: #7 103 (569) 1 1/2"
#6 192 (480) 6' 6"

- New. 1905 Dering Coal Co #3
- 1910 Brazil Block Coal Co #3
- 1912 Dering Coal Co. #3
- 1914 ABD



Farm.....

No.....

Company.....

Dering Coal Co.

No. 3

County No. 662

17 tubulations

Elevation 672.0 ft.

By Ca

Method: Level, transit, alidade, hand level

Elevation of.....

Height of point above ground.....

Date..... Notebook..... P.....

Looseleaf ref.....

Map files No.....

Description of item: (drill hole, mine, etc.) Shaft mine Abandoned

County Vermilion Quadrangle Danville Index No. 23 23 E 2



Mine originally operated by: (1)

Date
1905

DERING COAL CO.

Original name or number: No. 3.
Illinois Coal Report D.

LATER OPERATORS

Date	Operator	Name or No.
2 1910	BRAZIL BLOCK COAL CO.	No. 3.
3 1912	DERING COAL CO.	No. 3.
4 1913	DERING COAL CO.	DERING#3
5		
6		
7		
8		
9		
10		
11		
12		
13		
14		

*Also owners

#See ownership sheet

Railroad, Wagon, Strip, Idle, Abandoned

SHAFTMINE

IDENTIFICATION

County No. 662

Coal No. 6

Coal Report No. _____

Quad. DANVILLE
County VERMILION

	5
	4
	3
	2
	1
8	
7	
6	
5	
4	
3	
2	
1	

Sec. 23

T. 18 N. 8

R. 12 W. 8

Index No.

COAL MINE OPERATOR

2323E2



(Sheets) **COAL PRODUCTION** (Sheet)

Period						Tons	
Mo.	Day	Year	Mo.	Day	Year		
					1905	1	500
					1906	56	052
					1907	308	232
					1908	317	289
					1909	366	662
					1910	362	898
					1911	227	834
					1912	301	103
					1913	144	428
					1914		

Abd.

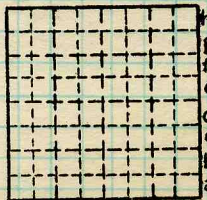
SUMMARIES

No. 1905 to No. 1913 2 025 998

Railroad, Wagon, Strip, Idle, Abandoned 1914 **SHAFT MINE** Sec. 23

IDENTIFICATION

County No. 662 Coal No. 6
 Quad. DANVILLE
 County VERMILION



T. 18 N.
 R. 12 W.
 Index No.

2 323 E 2

COAL MINE—PRODUCTION

ILLINOIS GEOLOGICAL SURVEY, URBANA





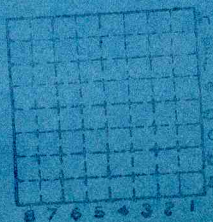
Form 180 Blue

Same as Deting No 3?
ADD

Brazil Block CC.

#3

Mime index 3670



Sec. 23 F2 (?)

L 18 N

R. 12 W

Index No.

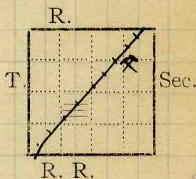


COAL MINING INVESTIGATIONS
COOPERATIVE AGREEMENT

Mine Name or No., *Westville #3*
mile from

Operator, 191 *Brazil Block Coal Co*

Operator, 191



Entrance, Elev., ft. { above,
Depth to bottom coal, ft. Alt. { below,

SURFACE DATA.

- A. Topography See
- B. Surficial materials, (1) Character
- (2) Thickness, (3) Effect on mining and shaft-sinking, of former drainage lines, underground water strata, etc.

- C. Outcrops, (1) Character, See
- (2) Structure, See
- (3) Fossil horizons See
- Collection No.,
- (4) Evidences of subsidence, See
- D. Note collection of mine maps, drill records and shaft logs.

See drill record sheet.

- E. Notes on surrounding area,

See

Coal bed name: Local,

Collector,

Mine, *Westville #3*

L.—SURFACE SHEET (Geol.)

Co.

Vernilion

Survey

State No.

Co-op. No.

(2723)
2323