

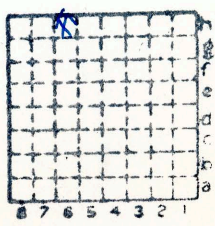


Form 180

↓

mine index 4470

535



Sec. 32

T.	9	N
R.	4	E.

Index No.



Mine originally operated by: (1)

Date

Original name or number:

Illinois Coal Report

p.

LATER OPERATORS

Date	Operator	Name or No.
2		
3		
4		
5		
6		
7		
8		
9		
10		
11		
12		
13		
14		

\* Also owners

#See ownership sheet

Railroad, Wagon, Idle, Abandoned **Slope**

IDENTIFICATION

County No. 535

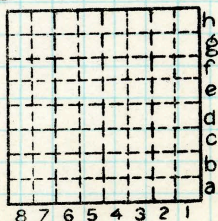
Coal No.

5

Quad. Marion

Part

County Williamson



Sec. 32

T.	9	N.
		S.
R.	4	E.
		W.

Index No. 0832 h6

COAL MINE OPERATOR

