

1285' from NL
750' from W.L

Southwestern II CC

Streamline mine

MI 872

Co No. 1119

Coal Rept 8-7



Sec.

14

T.

6

S.

R.

5

W

Index No.

Abd 1983



Mine originally operated by: (1)

Southwestern Ill. Coal Co.

Date

1936

Original name or number:

Illinois Coal Report 1936 p.

LATER OPERATORS

Date

Operator

Name or No.

"Streamline"

2

3

1965 Southwestern Ill. Coal Corp. "Streamline"

4

5

5116183

Contracts awarded for mine reclamation

SPRINGFIELD - The Abandoned Mined Lands Reclamation Council has awarded contracts to reclaim abandoned mines in Madison and Randolph counties.

Donald Wels Clearing and Excavating Inc. of DuQuoin will get \$70,955 to reclaim the Glen Carbon Coal Co. mine and the Sugar Loaf Coal Co. mine and \$140,759 for the DeCamp mine in Madison County. And Wayne Hepp Grading Contractor of Ava will get \$480,212 to reclaim the Streamline mine in Randolph County.

Also awarded were contracts for three other mines in three other counties. The total amount of the contracts is more than \$1.7 million.

Eight shafts will be filled and 152 acres of land reclaimed.

RELEVILLE 7-16-48

13

14

1/285' S 750' E of NW corner NW NW (1948) OK

* Also owners

#See ownership sheet

Railroad, Wagon, Idle, Abandoned Strip

MP, GMO

IDENTIFICATION

County No. 1119

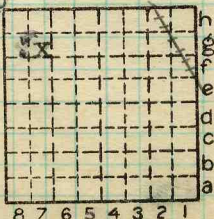
Coal No. 6

S-7

Quad. Coulterville Part

(1948) 6' 5"

County Randolph



Sec. 14

T. 6 S.

R. 5 W.

Index No.

1014 88

COAL MINE OPERATOR

872



(Sheets)

COAL PRODUCTION

(Sheet)

No.	Period						Tons	
	Mo.	Day	Year	Mo.	Day	Year		
7	1	1	1936	12	31	1936	10	602
7	1	1	1937	12	31	1937	758	234
S-7	1	1	1938	12	31	1938	682	089
						1939	841	421
						1940	739	991
S-7	1	1	1941	12	31	1941	880	861
S-7	1	1	1942	12	31	1942	937	764
						1943	891	911
						1944	1	057 048
						1945	1	187 285 → 9
						1946		938 685
						1947	1	061 214
						1948	1	063 583
						49		857 504
						50	1	073 177
						51	1	081 812
						52		944 877
						53		797 703
						1954		759 982
						1955	1	109 020
						1956	1	098 760
						1957		812 911
						1958		756 347
						1959	1	138 132
						1960		933 759
						1961		939 455

SUMMARIES

No.	to	No.			
<i>Total production thru 1958</i>			19	650	447

Railroad, Wagon, Idle, Abandoned **Strip**

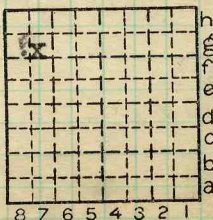
IDENTIFICATION

S-7

County No. **1119** Coal No. **6**

Coulterville
Quad. Part

County **Randolph**



Sec. 14

T. 6 N.
S. S.
R. 5 E.
W. W.

Index No. **1014 g 7**

COAL MINE—PRODUCTION

872



(Sheets) COAL PRODUCTION (Sheet)

Period			Tons		
Mo.	Day	Year	Mo.	Day	Year
		1962	1	062	503
		1963		985	730
		1964	1	382	186
		1965	1	878	533
		1966	1	590	390
		1967	1	718	903
		1968	1	302	770
		1969	1	519	977
		1970	1	506	436
		1971	1	352	215
		1972	1	629	218
		1973	1	445	733
		1974	1	215	383
		1975	1	436	769
		1976	1	451	566
		1977	1	436	769
		1978		918	774
		1979	1	283	217
		1980	1	845	183
		1981	1	452	601
		1982	1	358	070
		1983		463	543

Last production May.

SUMMARIES

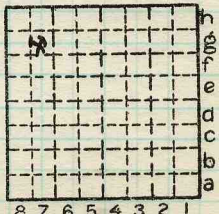
No. 1950 to 1971(INC) No. 25945578

Railroad, Wagon, Strip, Idle, Abandoned Strip

Sec. 14

IDENTIFICATION

County No. _____ Coal No. 6
 Coal Report No. S-7
 Quad. COULTERVILLE
 County RANDOLPH



T. 6 S. 6
 R. 5 W. 5
 Index No.

COAL MINE-PRODUCTION ILLINOIS GEOLOGICAL SURVEY, URBANA 872

1014 980 7



ILLINOIS GEOLOGICAL SURVEY, URBANA

C. G. Treworgy and H.-F. Krausse
Southwestern Coal Company
Streamline Mine, Steelville, Perry County
March 12, 1975 *Randolph 14-65-5W*

Preliminary investigation to select a site for photogrammetry experiments.

Mining operations prevented close examination of the best exposed areas. At this date the mine was near the outcrop of the #6 (about 800') and is expected to be relocated October 1975.

Only the #6 coal is mined.

The highwall was clean and not very high.

A complete sequence from Anna shale thru the Bankston Fork limestone was present. The Bankston Fork had 2 benches.

Because of the nearness of the outcrop and short life expectancy of this mine, this would not be a good site for long range photogrammetry experiments.

By _____ Date _____

Quadrangle _____

County _____ Sec. _____ T _____ R _____

+	+	+	+	+	+	h	
+	+	+	+	+	+	g	
-	+	+	+	+	+	f	
						e	
						d	
+	+	+	+	+	+	c	
						b	
+	+	+	+	+	+	a	
8	7	6	5	4	3	2	1

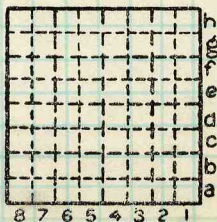
Southwestern C. C. gave me an elevation
of 470.89 where R.R.'s cross at depot,
Percy.

--EFT, 7-28-39

By..... Date.....

Quad..... Part.....

County.....



Sec. N.
T. S.
R. E.
W.
Index No.

872



ILLINOIS GEOLOGICAL SURVEY, URBANA
 SW Ill. C. C.

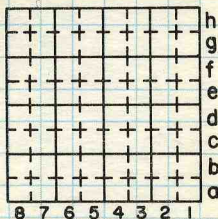
Streamline Mine
 ≈100'NE of incline
 Face Channel Sample #1

Thickness Top

- 1.2' 0'-1.2' - Coal - Normally bright banded, several fusain partings.
- 0.02' 1.2'-1.22' - Pyrite - Lens, somewhat shaley, persistent, but quite lenticular.
- 0.95' 1.22'-2.17' - Coal - Normally bright banded, 1 fusain parting about in middle, locally pyritized.
- 0.03' 2.17'-2.20' - Shale - Dark brown, carbonaceous, soft.
- 0.36' 2.20'-2.56' - Coal - Normally bright banded, blocky.
- 8 2.56'-2.64' - Fusain - Shaly, slightly pyritized, quite lenticular.
- 2.64'-3.10' - Coal - Normally bright banded, somewhat bony layer in middle.
- 3.10'-3.12' - Fusain - Soft, somewhat shaley, pyritized rather persistent parting.
- 3.12'-3.56' - Coal - Fairly dull, especially near base.
- 3.56'-3.60' - Pyrite and Shale - Lenticular.
- 3.60'-4.62' - Coal - Normally bright banded, several fusain lenses, thin, mostly pyritized.
- 4.62'-4.66' - Bone Coal - Locally pyritized.
- 4.66'-5.03' - Coal - Normally bright banded.
- 5.03'-5.12' - Shale - Thin, pyrite lens locally at top, dark gray, carbonaceous, "Blue Band" excluded from Face Channel Sample.

By H.H.D. & W.J.N. Date 5/31/74

Quadrangle _____



County _____ Sec. _____ T. _____ R. _____



thick ~~ways~~ Top

5.12'-5.17' - Bone Coal.

5.17'-6.20' - Coal - Normally bright banded.

6.20'-6.27' - Pyritic shale and little coal at
base.

Underclay

Steam Line Mine, 5/31/74

FC #1 p. 2

ILLINOIS GEOLOGICAL SURVEY, URBANA
 SW Ill. C. C.
 Streamline Mine
 Face Channel Sample #2: ≈200' SW of Face Channel
 Sample #1

Thick-
ness

Top

- 0-1.10' - Coal - Normally bright banded.
- 1.10-1.12' - Pyrite lens (pyritized shale).
- 1.12-2.07' - Coal - Normally bright banded, blocky.
- 2.07-2.08' - Pyrite - Locally 0.05' thick.
- 2.08-2.53' - Coal - Normally bright banded, several soft fusain partings.
- 2.53-2.61' - Fusain - Soft, shaly, locally pyritized, lenticular.
- 2.61-3.43' - Coal - Normally bright banded, several fusain partings.
- 3.43-3.46' - Pyrite - Lenticular, often shaly.
- 3.46-4.56' - Coal - Normally bright banded, several fusain partings, rather dull near top.
- 4.56-4.59' - Pyritized shale parting.
- 4.59-4.86' - Coal - Normally bright banded.
- 4.86-4.96' - Shale - Medium gray, locally pyritized "Blue Band."

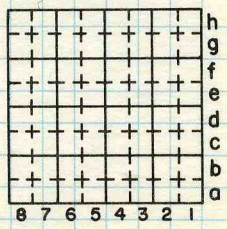
Taken as separate sample.

- 4.96-5.96' - Coal - Normally bright banded, rather dull near top, pyritic near base (≈0.02).
Underclay - Soft

By H.H.D. & W.J.N. Date 5/31/74

Quadrangle _____

County _____ Sec. _____ T. _____ R. _____



ILLINOIS GEOLOGICAL SURVEY, URBANA
 SW Ill. C. C.
 Streamline Mine
 Face Channel Sample #3

thick-
ness

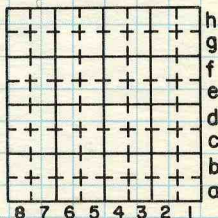
Top

- 0-0.76' - Coal - Normally bright banded.
 0.76-0.78' - Coal - Shaly.
 0.78-1.70' - Coal - Normally bright banded.
 1.70-1.78' - Shale - Brownish gray, soft, excluded from Face Channel, taken separately.
 1.78-2.22' - Coal - Normally bright banded, several thin shaly laminae, + pyritized, and thin fusain partings.
 2.22-2.24' - Shale - Pyritized, lenticular.
 2.24-2.89' - Coal - Normally bright banded, blocky.
 2.89-2.91' - Shale - Pyritized, with fusain lenses, varies in thickness.
 2.91-4.36' - Coal - Normally bright banded, hard, blocky, pyritic lenses about in middle, up to 1/2" thick.
 4.36-4.54' - Shale - Medium to dark gray, pyritized at top, mostly soft, varies in thickness from 1/2 to 2", top layer mostly pyritized. **EXCLUDED** from Face Channel, separate sample.
 4.94-5.50' - Coal - Normally bright banded, dull in upper 1/3, rather hard, except near base.
Soft underclay, gray.

By _____ Date _____

Quadrangle _____

County _____ Sec. _____ T. _____ R. _____



Southwestern Illinois Coal Co.
Streamline Mine - Highwall Description

thickness

10-20'	Drift, soil - Medium yellowish brown
≈1'	0-1' - <u>Limestone</u> - Yellowish brown, rotten, weathered.
1.5'	1-2.5' - <u>Galum Limestone</u> - Only present in center of pit. Clayey, nodular; light gray and greenish gray. SAMPLED
4'	2.5-6.5' - <u>Shale</u> - Greenish gray, soft. Dark layer at top.
3'	6.5-9.5' - <u>Bankston Fork Limestone</u> - Light (mottled with medium dark gray); fine-grained; hard, dense. Fossils mainly brachiopods. SAMPLED
3.0'	9.5-12.5' - <u>Shale</u> - Dark gray (lighter gray in top 0.5'); well laminated.
3.2'	12.5-15.7' - <u>Conant Limestone</u> - Medium dark gray; very fine-grained; dense. Productids common.
3.0'	15.7-18.7' - <u>Limestone</u> and interbedded calcareous <u>Shale</u> - Medium dark gray; productids and foraminifera abundant; columnals. Contains limestone pebbles like above. SAMPLE
0.5'	18.7-19.2' - <u>Jamestown Coal</u> - Coal and interbedded dark gray shale.
0.75'	19.2-19.95' - <u>Limestone (Seatrock)</u> - Dark gray, fine-grained, hard. Contains small light brownish gray phosphatic fragments near top.

+	+	+	+	+	+	h g f e d c b a	
+	+	+	+	+	+		
+	+	+	+	+	+		
+	+	+	+	+	+		
+	+	+	+	+	+		
+	+	+	+	+	+		
8	7	6	5	4	3	2	1

By H. H. D. & W. J. N. Date 5/31/74

Quadrangle _____

County _____ Sec. _____ T. _____ R. _____



thickness

- 6.2' 19.95-26.15' - Shale - Dark gray; well laminated; weak; calcareous; pyritic. Shell fragments, forams common.
- 5.5' 26.15-31.65' - Brereton Limestone - Medium dark gray; fine grained, dense. Brachiopods and columnals common, Fusulinids. SAMPLED
- 2' 31.65-33.65' - Anna Shale - Black, "slate." Probably only a few inches here—top contact buried. Mine superintendent (Don McCall) noted up to 4' in places. Very little seen on dumps.

Top of Herrin Coal - Three face samples taken. Only blue band excluded, but sampled to make column samples. Detailed description of coal seam by H.H.D.

Sw Hill, Co, Steamline, 1/31/74
Highwall Area. p. 2