



Form 180

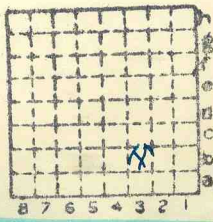
White Ash cc

H12

Mine Index 3609

R -F

HERRIN



Sec. 24

T.	2	N.	S.
R.	9	E.	W.

Index No.



Mine originally operated by: (1)

Date

Original name or number:

Illinois Coal Report p.

LATER OPERATORS

Date

Operator

Name or No.

2 White Ash Coal Co.

3

4

5

6

7

8

9

10

11

12

13

14

* Also owners

#See ownership sheet

Railroad, Wagon, Idle, Abandoned

LOCAL MINE IDENTIFICATION

County No. 412

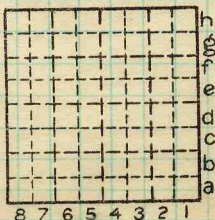
Coal No. 6



Part

Quad. 225d

County St. Clair



Sec. 24

T. 2 N.

R. 9 W.

Index No.

0424 b3

COAL MINE OPERATOR



(Sheets) COAL PRODUCTION (Sheet)

Period						Tons
Mo.	Day	Year	Mo.	Day	Year	

SUMMARIES

No.	to	No.

Railroad, Wagon, Idle, Abandoned

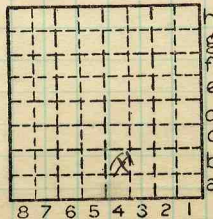
IDENTIFICATION

LOCAL MINE

County No. 412 Coal No. 6

Quad. 225d Part

County St. Clair



Sec. 24

T. 2 N. S.

R. 9 E. W.

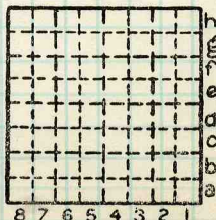
Index No.

0424.B3

COAL MINE—PRODUCTION

The White Ash Mine is 0424, SE $\frac{1}{4}$
 Sec. 24, 2N - 9W. It is now aban-
 doned. It operated from the fall of
 1936 until the spring of 1937.
 Owner: Barney Coppler. Depth to coal-
 48 feet. Thickness: 84".

By EFT Date 6/10/37
 Quad. _____ Part. _____
 County St. Clair



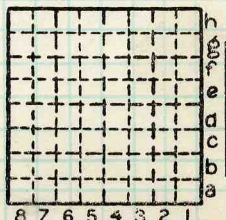
h Sec. 24
 g N.
 f T. 2 S.
 e E.
 d R. 9 W.
 c
 b
 a Index No.

White Ash Coal Co. at French Village
operated by Barney Coppler.

By EFT Date 6/9/37

Quad. _____ Part _____

County St. Clair



Sec. 24
T. 2 N.
R. 9 S.
W.
Index No.



LOCATION AND ELEVATION

Location: side R. R.
 side R. R.
 side Highway No.
 on top. map Location sheet

Elevation: Method, 1. Est. () _____ ft.
 2. Inst. (kind PT) 500.6 ft.

By E.F.T. 13-87-44B Data sheet

DEPTH

Authority To coal _____ ft.
 Authority Rail to rail _____ ft.
 Top of coal above rail. (Est. Rule) _____ ft.
 To coal 48' ft.

ALTITUDE OF TOP OF COAL

By estimated data _____
 By instrumental data _____ 452.6 ft.

Thickness

Max. in. Min. in. Aver. 87 in.

GEOLOGICAL DATA

Mine notes, date _____

Coop No. Pyr. inv. Coal Ash inv.

CHEMICAL DATA

Analyses Face	U. I.	B. M.	Others
Car	U. I.	B. M.	Others
Org. Sulf	U. I.	B. M.	Others
Ash fusion	U. I.	B. M.	Others
Ash anal.	U. I.	B. M.	Others
	U. I.	B. M.	Others

Classification

Misc. tests: Coking. Cleaning Boiler

Published descriptions:—

Railroad, Wagon, Idle, Abandoned

LOCAL MINE

IDENTIFICATION

County No. 412

Coal No. 6

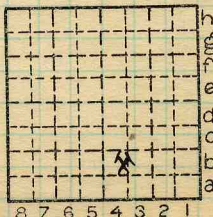


Part

Quad. 225d

County

St. Clair



Sec. 24

T. 2 N.

R. 9 W.

Index No.

0724.B3

COAL MINE LOCATION AND DATA