



Mine originally operated by: (1)

Date

L-42

Fred Ziska

Original name or number:

Illinois Coal Report

p.

LATER OPERATORS

Date

Operator

Name or No.

2 1931

Fred J Ziska
1

3

4

5

6

7

8

9

10

11

12

13

14

No. 1939 Prod.

* Also owners

#See ownership sheet

Railroad, Wagon, Idle, Abandoned

Drift Mine

LOCAL MINE

IDENTIFICATION

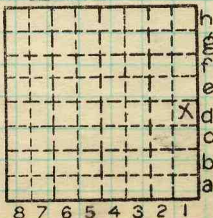
County No. 377

Coal No. 6

Quad. French Village

Part 5

County St Clair



Sec. 34

T. 2 N. 3

R. 9 E. W.

Index No.

0434-1d

COAL MINE OPERATOR

L



(Sheets) COAL PRODUCTION (Sheet)

Period						Tons	
Mo.	Day	Year	Mo.	Day	Year		
1	1	1931	12	31	1931	1	140
1	1	1932				1	200
		1933					
		1934					509
		1935					258
		1936					210
		1937					138
		1938					169
		1939					
							3624

NO PRODUCTION
 CHECKED THRU 1945
 R.A.B.
 7-77

SUMMARIES

No. to No.

Railroad, Wagon, Idle, Abandoned

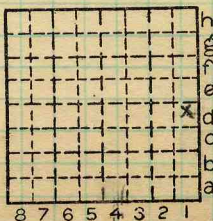
IDENTIFICATION

LOCAL MINE

County No. 377 Coal No. 6

Quad. Fr. Village Part 5

County STCLAIR



Sec. 34

T. 2 N.
 R. 9 W.

Index No.

0434 1d

COAL MINE—PRODUCTION



LOCATION AND ELEVATION

Location: side R. R.
 side R. R.

E side Highway No. **157**

on top. map **225d** Location sheet

Elevation: Method, 1. Est. () _____ ft.
 2. Inst. (kind **PT**) **484.0** ft.

By **EFT** **13-87-446** Data sheet

DEPTH

Authority To coal _____ ft.
 Authority Rail to rail _____ ft.
 Top of coal above rail. (Est. Rule) _____ ft.
 To coal ~~484.0~~ ft.

ALTITUDE OF TOP OF COAL

By estimated data _____
 By instrumental data **484.0** ft.

Thickness

Max. in. Min. in. Aver. **87** in.

GEOLOGICAL DATA

Mine notes, date _____

Coop No. Pyr. inv. Coal Ash inv.

CHEMICAL DATA

Analyses Face	U. I.	B. M.	Others
Car	U. I.	B. M.	Others
Org. Sulf	U. I.	B. M.	Others
Ash fusion	U. I.	B. M.	Others
Ash anal.	U. I.	B. M.	Others
	U. I.	E. M.	Others

Classification

Misc. tests: Coking. Cleaning Boiler

Published descriptions:—

Railroad, Wagon, Idle, Abandoned **SD**

LOCAL MINE

IDENTIFICATION

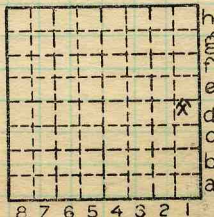
County No. **377**

Coal No. **6**



Part **5**

Quad. **French Village**
 County **St Clair**



Sec. **34**

T. **2** N.
 R. **9** W.

Index No.

0434-1d

COAL MINE LOCATION AND DATA