





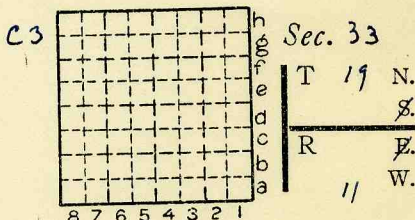
Location and Elevation Data

Location: Exact Approximate  
 (Approximate only if no trace of record of original exists)  
 Location by G.M.W. 1500  
 Date Oct. 1945 Notebook No. 667 Page 83-2758  
 Looseleaf ref. \_\_\_\_\_  
 Map files No. 14-92-36

Description of Location

Position in sec., 1/4 sec., 40 acres

\_\_\_\_\_ feet from North line  
1440 feet from East line  
1775 feet from South line  
 \_\_\_\_\_ feet from West line



Other description: \_\_\_\_\_

Farm \_\_\_\_\_

No. \_\_\_\_\_

Company (Drift mine)

No. \_\_\_\_\_

County No. 603

17 tabulations

Elevation 571.6 ft.

By G.M.W.

Method: Level, transit, alidade, hand level

Elevation of Approx base of 6' ± #6 coal

Height of point above ground \_\_\_\_\_

Date \_\_\_\_\_ Notebook \_\_\_\_\_ P. \_\_\_\_\_

Looseleaf ref. \_\_\_\_\_

Map files No. \_\_\_\_\_

Description of item: (drill hole, mine, etc.) Drift mine Abandoned

County Yermlian Quadrangle Danville Index No. 1733 C3





Form 180 Blue

*George H. Haskins "Brookside"*

h	.	.	.	.	.	.	.	.	.	.
g	.	.	.	.	.	.	.	.	.	.
f	.	.	.	.	.	.	.	.	.	.
e	.	.	.	.	.	.	.	.	.	.
d	.	.	.	.	.	.	.	.	.	.
c	.	.	.	.	.	.	.	.	.	.
b	.	.	.	.	.	.	.	.	.	.
a	.	.	.	.	.	.	.	.	.	.
	8	7	6	5	4	3	2	1		

Sec. 33 C4  
T. 19 N.  
R. 11 E.  
Index No.

mine index 3742



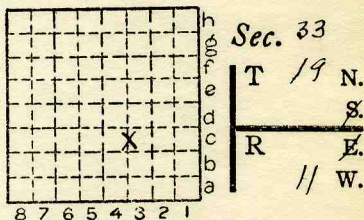
Location and Elevation Data

Location:                      Exact                      Approximate  
 (Approximate only if no trace of record of original exists)  
 Location by Abd. M. Macs Book  
 Date..... Notebook No..... Page.....  
 Looseleaf ref.....  
 Map files No.....

Description of Location

Position in sec., 1/4 sec., 40 acres

.....feet from North line  
 .....feet from East line  
 .....feet from South line  
 .....feet from West line



Other description: operating 1900  
1900 Brookside Cmc  
1904 White, C.C. "Brookside"  
1905 Haskins, G.H. "Brookside"  
1906 AOD

Farm.....  
 No.....  
 Company (Brookside)  
Geo H Haskins, "Brookside"  
 No. 2  
 County No.....

Elevation.....ft.

By.....

Method: Level, transit, alidade, hand level

Elevation of.....

Height of point above ground.....

Date..... Notebook..... P.....

Looseleaf ref.....

Map files No.....

Description of item: (drill hole, mine, etc.) SA

County Vermilion      Quadrangle 199      Index No. 1733 CA



Mine originally operated by: (1)

Date

BROOKSIDE COAL M. Co.

ANTE 1900

not new - 1898

Original name or number: No. 2.

Illinois Coal Report p.

LATER OPERATORS

Date	Operator	Name or No.
2 1904	C.C. WHITE	"BROOKSIDE"
3 1905	GEO. H. HASKINS	"BROOKSIDE"
4		
5		
6		
7		
8		
9		
10		
11		
12		
13		
14		

\*Also owners

#See ownership sheet

Railroad, Wagon, Strip, Idle, Abandoned

IDENTIFICATION

County No. \_\_\_\_\_

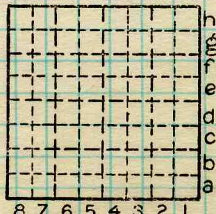
Coal No. 1906

Coal Report No. \_\_\_\_\_

6

Quad. DANVILLE

County VERMILION



Sec. 33

T. 19 N. 8.

R. 11 W. E.

Index No.

COAL MINE OPERATOR

173304





( Sheets ) **COAL PRODUCTION** ( Sheet )

Period						Tons				
Mo.	Day	Year	Mo.	Day	Year					
					1900	100	746			
					1901	89	846			
					1902	182	928			
					1903	131	861			
					1904	18	513			
					1905		989			
					1906	1	658			

*Abd.*

**SUMMARIES**

No.	to	No.				
1900		1906	526	541		

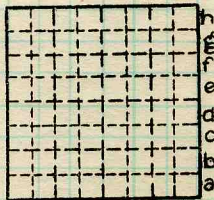
Railroad, Wagon, Strip, Idle, Abandoned  
1906

**IDENTIFICATION**

County No. \_\_\_\_\_ Coal No. \_\_\_\_\_

Coal Report No. \_\_\_\_\_  6

Quad. **DANVILLE**  
County **VERMILION**



Sec. **32**

T. **19 N.**

R. **11 W.**

Index No.

**COAL MINE—PRODUCTION**

ILLINOIS GEOLOGICAL SURVEY, URBANA

**173304**

