



Strip mine operated by Mrs. Miller
of Malgrew Const. Co. Keokuk, Iowa

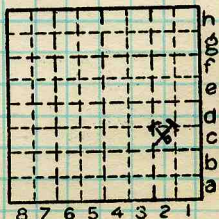
Coal exposed in pit and mined
averages 30"

Overlain by about 4' of gray sh &
in places has black shaly sh
over it. In S. side of present cut
coal is immediately overlain by
drift which apparently cuts coal
out in valley of Cooks Run to S.
as coal does not outcrop in Cooks
Run anywhere from pit down-
stream between 2 N-S roads,
and MISS LS. outcrops at 7C
in bottom of branch.

Coal rises slightly to NE so
possibly gets shallower in that
direction unless cut by drift."

#2 Coal

By ETB & EET. Date ?
FIELD NOTEBOOK
Quad. 161 Part SW 1/4
County MORGAN



Sec. 22 20

T. 16 N.

R. 12 W.

Index No.