

The McLaren Co  
IS 65 Index II  
4021

McLaren Co

476

	h
	g
	f
	e
	d
	c
	b
	a
8	
7	
6	
5	
4	
3	
2	
1	

Sec. 4

T.	9	N.
		S.
R.	2	E.
		W.

Index No.

↓





LOCATION AND ELEVATION

Location: side R. R.
side R. R.
side Highway No.

on top. map Location sheet

Elevation: Method, 1. Est. ( ) ft.
2. Inst. (kind ) ft.

By Data sheet

DEPTH

Authority To coal ft.
Authority Rail to rail ft.
Top of coal above rail. (Est. Rule) ft.
To coal ft.

ALTITUDE OF TOP OF COAL

By estimated data ft.
By instrumental data ft.

Thickness

Max. in. Min. in. Aver. in.

GEOLOGICAL DATA

Mine notes, date
Coop No. Pyr. inv. Coal Ash inv.

CHEMICAL DATA

Analyses Face U. I. B. M. Others
Car U. I. B. M. Others
Org. Sulf U. I. B. M. Others
Ash fusion U. I. B. M. Others
Ash anal. U. I. B. M. Others
U. I. B. M. Others

Classification

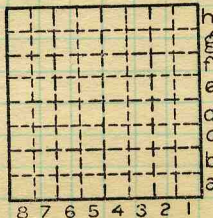
Misc. tests: Coking. Cleaning Boiler

Published descriptions:—

Railroad, Wagon, Idle, Abandoned 1918±

IDENTIFICATION

County No. 476 Coal No.
Quad. W. Frankfort Part
County Williamson



Sec. 4
T. 9 N. S.
R. 2 W. E.
Index No. 0604

COAL MINE LOCATION AND DATA