

2000

GIRARD COAL CO.

Herrin

last oper. as :

Illinois Coal Corp., Empire No. 4

See 32

h
i
j
k
l
m
n
o
p
q
r
s
t
u
v
w
x
y
z
A
B
C
D
E
F
G
H
I
J
K
L
M
N
O
P
Q
R
S
T
U
V
W
X
Y
Z
AA
AB
AC
AD
AE
AF
AG
AH
AI
AJ
AK
AL
AM
AN
AO
AP
AQ
AR
AS
AT
AU
AV
AW
AX
AY
AZ
BA
BB
BC
BD
BE
BF
BG
BH
BI
BJ
BK
BL
BM
BN
BO
BP
BQ
BR
BS
BT
BU
BV
BW
BX
BY
BZ
CA
CB
CC
CD
CE
CF
CG
CH
CI
CJ
CK
CL
CM
CN
CO
CP
CQ
CR
CS
CT
CU
CV
CW
CX
CY
CZ
DA
DB
DC
DD
DE
DF
DG
DH
DI
DJ
DK
DL
DM
DN
DO
DP
DQ
DR
DS
DT
DU
DV
DW
DX
DY
DZ
EA
EB
EC
ED
EE
EF
EG
EH
EI
EJ
EK
EL
EM
EN
EO
EP
EQ
ER
ES
ET
EU
EV
EW
EX
EY
EZ
FA
FB
FC
FD
FE
FF
FG
FH
FI
FJ
FK
FL
FM
FN
FO
FP
FQ
FR
FS
FT
FU
FV
FW
FX
FY
FZ
GA
GB
GC
GD
GE
GF
GG
GH
GI
GJ
GK
GL
GM
GN
GO
GP
GQ
GR
GS
GT
GU
GV
GW
GX
GY
GZ
HA
HB
HC
HD
HE
HF
HG
HH
HI
HJ
HK
HL
HM
HN
HO
HP
HQ
HR
HS
HT
HU
HV
HW
HX
HY
HZ
IA
IB
IC
ID
IE
IF
IG
IH
II
IJ
IK
IL
IM
IN
IO
IP
IQ
IR
IS
IT
IU
IV
IW
IX
IY
IZ
JA
JB
JC
JD
JE
JF
JG
JH
JI
JJ
JK
JL
JM
JN
JO
JP
JQ
JR
JS
JT
JU
JV
JW
JX
JY
JZ
KA
KB
KC
KD
KE
KF
KG
KH
KI
KJ
KK
KL
KM
KN
KO
KP
KQ
KR
KS
KT
KU
KV
KW
KX
KY
KZ
LA
LB
LC
LD
LE
LF
LG
LH
LI
LJ
LK
LL
LM
LN
LO
LP
LQ
LR
LS
LT
LU
LV
LW
LX
LY
LZ
MA
MB
MC
MD
ME
MF
MG
MH
MI
MJ
MK
ML
MM
MN
MO
MP
MQ
MR
MS
MT
MU
MV
MW
MX
MY
MZ
NA
NB
NC
ND
NE
NF
NG
NH
NI
NJ
NK
NL
NM
NN
NO
NP
NQ
NR
NS
NT
NU
NV
NW
NX
NY
NZ
OA
OB
OC
OD
OE
OF
OG
OH
OI
OJ
OK
OL
OM
ON
OO
OP
OQ
OR
OS
OT
OU
OV
OW
OX
OY
OZ
PA
PB
PC
PD
PE
PF
PG
PH
PI
PJ
PK
PL
PM
PN
PO
PP
PQ
PR
PS
PT
PU
PV
PW
PX
PY
PZ
QA
QB
QC
QD
QE
QF
QG
QH
QI
QJ
QK
QL
QM
QN
QO
QP
QQ
QR
QS
QT
QU
QV
QW
QX
QY
QZ
RA
RB
RC
RD
RE
RF
RG
RH
RI
RJ
RK
RL
RM
RN
RO
RP
RQ
RR
RS
RT
RU
RV
RW
RX
RY
RZ
SA
SB
SC
SD
SE
SF
SG
SH
SI
SJ
SK
SL
SM
SN
SO
SP
SQ
SR
SS
ST
SU
SV
SW
SX
SY
SZ
TA
TB
TC
TD
TE
TF
TG
TH
TI
TJ
TK
TL
TM
TN
TO
TP
TQ
TR
TS
TT
TU
TV
TW
TX
TY
TZ
UA
UB
UC
UD
UE
UF
UG
UH
UI
UJ
UK
UL
UM
UN
UO
UP
UQ
UR
US
UT
UU
UV
UW
UX
UY
UZ
VA
VB
VC
VD
VE
VF
VG
VH
VI
VJ
VK
VL
VM
VN
VO
VP
VQ
VR
VS
VT
VU
VV
VW
VX
VY
VZ
WA
WB
WC
WD
WE
WF
WG
WH
WI
WJ
WK
WL
WM
WN
WO
WP
WQ
WR
WS
WT
WU
WV
WW
WX
WY
WZ
XA
XB
XC
XD
XE
XF
XG
XH
XI
XJ
XK
XL
XM
XN
XO
XP
XQ
XR
XS
XT
XU
XV
XW
XX
XY
XZ
YA
YB
YC
YD
YE
YF
YG
YH
YI
YJ
YK
YL
YM
YN
YO
YP
YQ
YR
YS
YT
YU
YV
YW
YX
YY
YZ
ZA
ZB
ZC
ZD
ZE
ZF
ZG
ZH
ZI
ZJ
ZK
ZL
ZM
ZN
ZO
ZP
ZQ
ZR
ZS
ZT
ZU
ZV
ZW
ZX
ZY
ZZ

Mine Index 186

0132 E1

Macoupin Co., at Girard

Mine originally operated by: (1)

Date

1867

???

Original name or number:

Illinois Coal Report

p.

LATER OPERATORS

Date	Operator	Name or No.
2 1882	Young, Armstrong, & Lowe	Girard ??
3 1883	Girard Coal & Tile Co.	"
4 1884	Girard Coal & Mining Co.	"
5 1885	Girard Coal Co.	"
6 1905	Illinois Collieries Co.	No. 5
7 1910	Girard Collieries Co.	No. 5
8 1914	Montour Coal Co.	No. 403
9 1919	Pittsburg Coal Co.	No. 403
10 1921	Illinois Coal & Coke Corp.	No. 4
11 1923	Illinois Coal Corp.	Empire No. 4
12 1925	Abandoned	
13		
14		

*Also owners

#See ownership sheet

Railroad, Wagon, Strip, Idle, Abandoned 1924

IDENTIFICATION

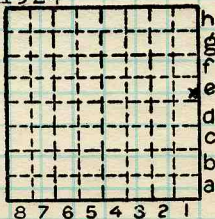
County No. 12

Coal No. 6

Coal Report No. _____

Quad. Carlinsville 15¹

County Macoupin



Sec. 32

T. 12 N.

R. 6 W.

Index No.

0132 E1

COAL MINE OPERATOR





(2 Sheets) COAL PRODUCTION (Sheet 1)

Period		Tons	
Mo.	Day Year	Mo.	Day Year
No production record: 1867-82			
	1879		996
Young, Armstrong, & Lowe	1882	60	000
Girard Coal & Tile Co.	1883	62	000
Girard Coal & Mining Co.	1884	52	000
Girard Coal Co.	1885	97	600
	1886	159	502
	1887	129	502
	1888	127	210
	1889	105	842
	1890	140	812
	1891	210	404
	1892	220	131
	1893	189	591
	1894	116	289
	1895	108	988
	1896	94	068
	1897	76	797
	1898	88	971
	1899	83	425
	1900	67	356
	1901	84	544
	1902	67	152

SUMMARIES			
No.	1882	to	1902 No.
		2	342 184

Railroad, Wagon, Strip, Idle, Abandoned

IDENTIFICATION

County No. 12

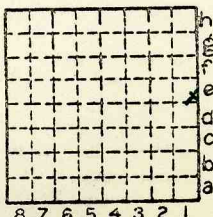
Coal No. 6

Coal Report No. _____



Quad. Carlinsville 15'

County Macoupin



Sec. 32

T. 12 N.
S.
R. 6 E.
W.

Index No.
0132 E1

Mine Index 186

COAL MINE—PRODUCTION

ILLINOIS GEOLOGICAL SURVEY, URBANA



(2 Sheets)

COAL PRODUCTION

(Sheet 2)

Period			Tons				
Mo.	Day	Year	Mo.	Day	Year		
Girard Coal Co.		1903				67	608
		1904				183	312
Illinois Collieries Co.		1905				123	735
		1906				213	590
		1907				223	445
		1908				110	898
		1909				180	676
Girard Collieries Co.		1910				257	500
		1911				279	860
		1912				263	512
		1913				353	002
Montour Coal Co.		1914				225	187
		1915				181	635
		1916				267	973
		1917				318	578
		1918				289	495
Pittsburg Coal Co.		1919				148	990
		1920				197	324
Illinois Coal & Coke Corp.		1921				249	748
		1922				68	803
Illinois Coal Corp.		1923				90	469
Abandoned		1924				---	---

SUMMARIES

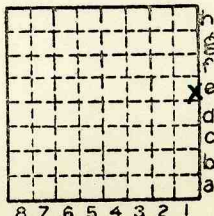
No. 1903	to	1924	No.			4 295	340
1882		1902				2 342	184

1882		1924				6 637	524
						6 638	520

Railroad, Wagon, Strip, Idle, Abandoned

IDENTIFICATION

County No. 12 Coal No. 6
 Coal Report No. _____
 Quad. Carlenville 15'
 County Macoupin



Sec. 32

T. 12 N.
S.
E.
R. 6 W.

Index No.

0132 E1

Mine Index 186

COAL MINE—PRODUCTION
 ILLINOIS GEOLOGICAL SURVEY, URBANA

FIELD NOTES

Illinois State Geological Survey

1884 Coal Report

GIRARD COAL AND MINING COMPANY'S MINE.

Girard Coal and Mining Company's shaft is located within the corporate limits of the village of Girard, and on the line of the Chicago, Alton and St. Louis Railroad. The shaft is 357 feet deep, and is in the basin of the coal along the line of said railroad. It runs from seven to eight feet in thickness. This mine has a splendid roof, one half of the works being in a solid limestone top, and very little timber needs to be used. The coal seems to be of a better quality than that of the surrounding mines. This company has made great improvements during the year. The hoisting shaft is made larger, the top landing raised, chutes built for coaling the engines on the Chicago and Alton, and Jacksonville Southeastern Railroads; revolving screens have been put up, and it is the intention as soon as it can be done to put in double engines on the

first motion for hoisting, and a 12-foot fan at the escapement shaft for ventilating purposes. The company will work on an average 100 miners during the year. This company has opened offices for the sale of their coal in Chicago. The Girard coal has become quite a favorite in Chicago. A brick and drain tile works is connected with the mine. Shale is mined in a shale seam above the coal. And it is intended to put down a slope to the coal seam, and hoist the shale from the landing of the coal seam. The shale is crushed and used in the making of brick and drain tile. The firm consists of A. K. Young, C. C. Armstrong, Henry Wood.

L. C. Murphy, Secretary, H. Wood, General Manager.

							h
							g
							f
							e
							d
							c
							b
							a
8	7	6	5	4	3	2	1

By _____ Date _____

Quadrangle Carlinville

County Macoupin Sec. 32 T 12N R 6W



COAL MINE NOTES.

COUNTY *Macoupin* TOWN *Girard* MAP No. *0132*
 T. *12N* R. *6W* S. *3R* SE cor *NE 1/4*
 OPERATOR *Girard Collieries Co* *0432*
 OFFICE *Girard*

MINE # *5*
 TIPPLE *Wooden*
 ENGINES *Sitchfield, first motion, 16" x 32" cylinders*
 BOILERS
 DRUM *Wooden lagged 6' diam.*
 SHAFT *2 comp. wooden 5 1/2' x 17'* CAGE *Self dump, slunkan*
 HAULAGE *wheels, will install electric haulage.*
 CARS *Wooden 1-1/2 ton capacity*
 VENTILATION *slunkan reversible, 30' x 8'*

DRAINAGE *Pump for sump.*
 SPRINKLING
 WORKING SYSTEM *Room & pillar*
 MINING METHODS *Shot off solids, Alton. C.C. powder*

SIZE OF ENTRIES—MAIN *10'* CROSS *10'* ROOM *27' x 200* NECK *45°*
 SIZE OF PILLARS—MAIN CROSS ROOM
 SHAFT CHAIN BARRIER
 AMOUNT OF TIMBERING *along entries 4-5. Props 1 to a 7' one* SIZE *6' x 10'*
 PROPORTION OF COAL UTILIZED *55%*
 AMOUNT AND CHARACTER OF WASTE *Pillars.*

ACREAGE OF COAL MINED
 ACREAGE OF COAL REMAINING
 PROPORTION OF MINE RUN AND SCREENED COAL
 METHOD OF SIZING *Shaker screen* RESCREENED ✓
 SIZES
 PER CENT
 PROPORTION AND SIZE OF WASHED COAL ✓
 DAILY OUTPUT
 UTILIZATION *Steam & domestic coal*
 MARKETS *Illinois*
 FREIGHT RATES ✓
 SELLING PRICES AT MINE *1.10 on average*

COAL LAND OWNED LEASED HELD IN FEE
 COST OF LAND OWNED LEASED HELD IN FEE
 ADDITIONAL NOTES *# 2 + 3 = 12* *0132*

USED IN COOP. REPT. 1912



LOCATION AND ELEVATION

Location: side R. R.
 side R. R.
 side Highway No.

on top. map Location sheet

Elevation: Method, 1. Est. () ft. 674.97

2. Inst. (kind) ft.

By Co. Data sheet

DEPTH

Authority To coal ft.

Authority Rail to rail ft.

Top of coal above rail. (Est. Rule) ft.

To coal 348 ft.

ALTITUDE OF TOP OF COAL

By estimated data

By instrumental data

327 ft.

Thickness

Max. 84 in. Min. 60 in. Aver. 72 in.

GEOLOGICAL DATA

Mine notes, date

Coop No. 186 Pyr. inv. Coal Ash inv.

CHEMICAL DATA

Analyses Face	U. I.	B. M. <u>81327-8-9-30</u>	Others
Car	U. I.	B. M.	Others
Org. Sulf	U. I.	B. M.	Others
Ash fusion	U. I.	B. M.	Others
Ash anal.	U. I.	B. M.	Others
	U. I.	B. M.	Others

Classification

Misc. tests: Coking. Cleaning Boiler

Published descriptions:—

Railroad, Wagon, Idle, Abandoned

IDENTIFICATION

County No. 243 12

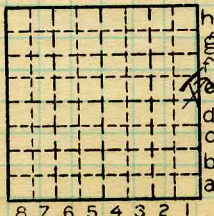
Coal No.



Part /

Quad. 191

County Macoupin



Sec. 32

T. 12 N.

~~S.~~

R. 6 W.

Index No.

0132.1e

COAL MINE LOCATION AND DATA



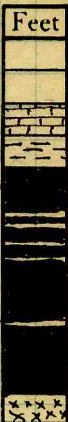
COAL MINE NOTES.
CONTINUED.

OPERATOR *Howard Roemer Co* MINE # 5 0132
 ENTRANCE *shaft* NAME OF COAL BED # 6 ~~0132~~
 ELEVATION *676 Est Man* THICKNESS OF COAL
 DEPTH TO FLOOR *352'* MAX. *102"* MIN. *72"* AV. *84*
 ALTITUDE OF COAL *324*
 LOCATION OF SECTION *Just north, 10th stub, 1st room.*

No. SECTION.

No.	SECTION.	In.
1	coal	19
2	sulphur	1/8
3	coal	3
4	sulphur	1/8
5	coal	8
6	sulphur	1/8
7	coal	5
8	sulphur	1/2
9	coal	2.5
10	BB	1
11	coal	2.5
12	Fe	+
Tape 86		Total
		87 1/8

SECTION



SAMPLE No. *447*
 CAN No. *95 + 81*
 CONDITION *dry*
 GROSS WEIGHT *40#*
 TIME EXPOSED *1 1/2 hrs*
 NOT SHIPPED *10*
 NOT INCLUDED *10, 8*

PHYSICAL PROPERTIES BY NUMBERS

ROOF *slr 0-2' to 4-5'.*

FLOOR *H.C 1' + Then 80'*

DIP *To the east. angle 2' to 100'.*

FAULTS, ETC. *Some small faults 12-15" displacement.*

GAS *Some in rooms*

USED IN COOP. REPT. 1912.

COLLECTOR *Jon A. Udden* REFERENCE

DATE *12/8/09*

0132
~~0132~~

~~2247~~ = 12



F. Thickness of rock above bed worked, *No information*
 (1) Important variations, *See*

G. Note presence of strata having important effect on mining, *See*
Shale requires timbering

- (1) Position, *Above coal.*
- (2) Character, *Black, massive to white crumbly shale.*
- (3) Persistence, *In patches thruout mine.*
- (4) Other workable coal beds, *See*

H. Cap rock, *Limestone*
 (1) Thickness, *No information*
 (2) Height above coal, *See*

I. Immediate roof, *Shale*
 (1) Thickness, *1" to 6"* (2) Contact with coal,
 (3) Horizontal variation, *Varies from black massive to white crumbly.* *See*

J. Draw slate. (1) Thickness, *4"* (2) Contacts
 (3) Persistence, *In patches thruout mine.*

K. Coal bed: Max. *84* Min. *60* Av. *72* inches

(1) Benches, *Two*
 (a) Position, *Above & below B.B.*

(b) Persistence, *Thruout mine* *See*

(2) Bedded impurities, kind, position in benches, persistence, ease of separation. *B.B., grey shale*

(1/2 to 1 1/2") ; charcoal bands.

See

(3) Irregularities in continuity of bed (due to deposition, erosion, or movement, *Rolls & slips* *See X1*

(a) Effect on mining, *Difficult to mine thru.* *See*

SECTION				
Ft.	In.	Name	Index	Sym.
?		Limestone		
6		Shale		
6		Coal		
1	2	Flour clay		
		<i>LDiv = 4'</i>		

Collector, *Natzaband*

Mine, *Empire #4* Co. *Macoupin*

M.—UNDERGROUND SHEET (Geol.)

Coal: Survey No. *6*

Index No. *0632.95*

#243 = 12



K. (5) Physical character of coal in benches,

(a) Relative hardness, *Same as rest of Macoupin County*(b) Lustre, *Most of coal bright, about 1' of dull above B.B.*(c) Fracture, *Hackly*(d) Texture, *Laminated* See

(6) Impurities in coal, other than bedded,

(a) Kind, *Pyrite bands, stringers & lenses, abundant Calc. f. f.*(b) Position and persistence, *Calcite f. f. thruout coal vertically & laterally, pyrite mostly above B.B.*(c) Rejected, *Large FeS₂ lenses* Ease of separation, *Break free*
_{*> bands*} SeeL. Floor: (1) Material, *Floor clay*(2) Thickness, *1" - 1 1/4"*(3) Variation, *Varies from soft, light grey to fairly hard, medium grey*(4) Note character, condition, tendency to heave, relation to undercutting commercial value. *Light grey clay, soft, plastic when wet.**- Does not heave, used to undercut upon; value unknown.*

See

(5) Clay sample No.

Location,

M. Stratigraphy,

(1) Fossiliferous horizons underground, *None observed.*

Collection No.

Location,

N. Notes on effect of deep drilling in coal mine areas.

See

Collector, *Netzeband*Coal: Survey No. *6* Mine, *Empire #4* Co. *Macoupin*Index No. *0632-95*

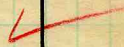
N.—UNDERGROUND SHEET (Geol.)

#243=12



(Sheets) COAL PRODUCTION (Sheet)

Period						Tons	
Mo.	Day	Year	Mo.	Day	Year		
		1925			1926	(Idle - 10 ft. Mine)	
		Daily Cap.			1926	1	500
					1927		0
					1928 (Idle)		
					1929 (abd.)		



SUMMARIES

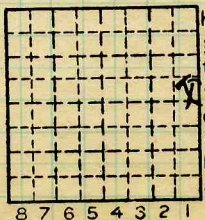
No.	to	No.				

Railroad, Wagon, Idle, Abandoned
IDENTIFICATION

County No. ¹²~~243~~ Coal No.

Quad. 191 Part /

County Macoupin



Sec. 32

T. 12 N.

R. 6 W.

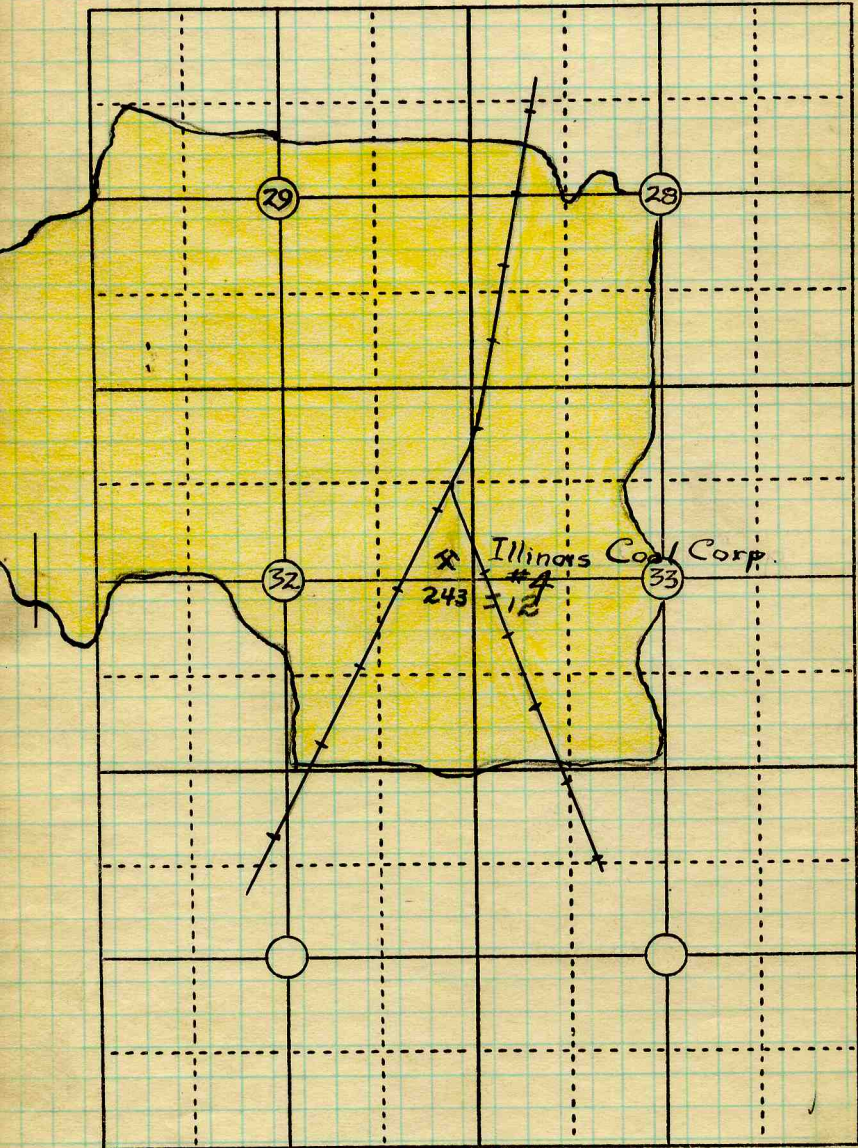
Index No.

0132.1e

COAL MINE—PRODUCTION



Map 6-8-21.



I12N R6W

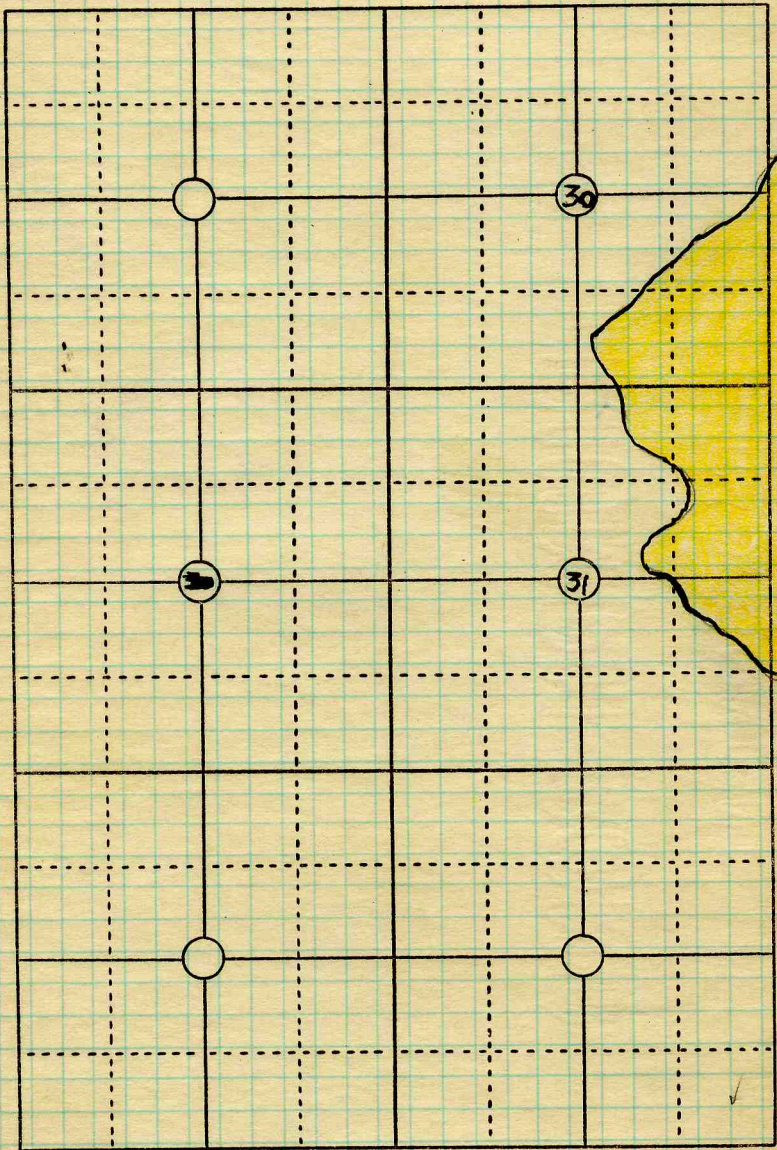
Date Map 6-8-'21.

Operator Illinois Coal Corp

Name or No. 4.

County Macoupin. ~~243~~ 12 Index No.

0132



T12N R6W.

Map.
Date 6-8-'21

Operator

Cont'd Illinois Coal Corp

Name or No. 4

County Macoupin.

#213

Index No.

0132



STATE GEOLOGICAL SURVEY.

0132

Mine Location GIRARD, ILL

COUNTY MACOUPIN

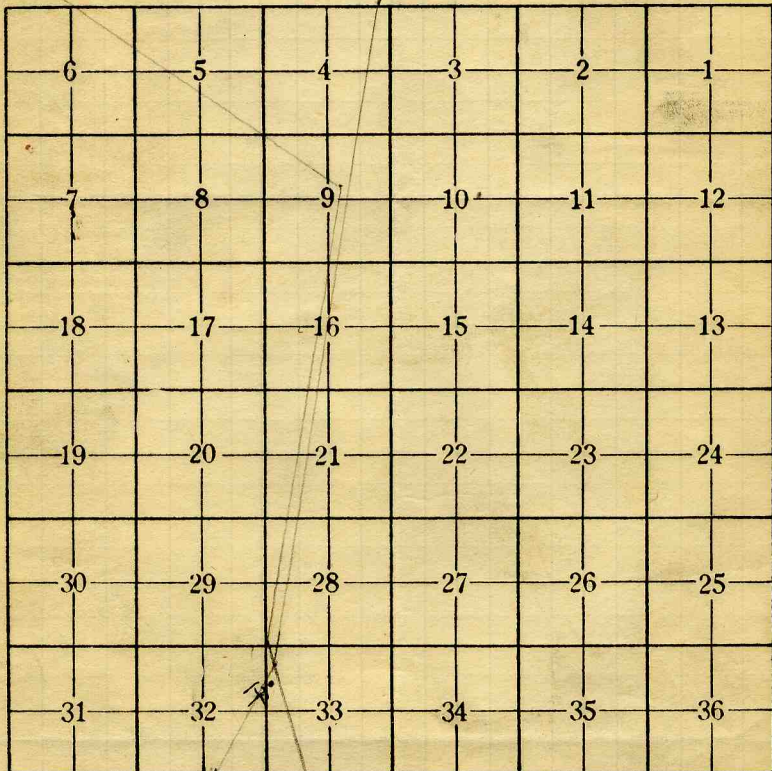
TOWNSHIP 12

RANGE

6-W3PM

CB69

C8A



X MAINSHAFT
• AIRSHAFT

Operator Girard Collieries Co.
 Office address 203 So Dearborn St. Chicago
 Mine name or number #5
 Surface at mine is 2 feet above sea level or about
2 feet (above) (below) railroad station at GIRARD
 Depth to bottom of coal is 352 feet
 Average thickness of coal is 7 feet inches

Kindly note changes in name and address.

Macoupin
Entered

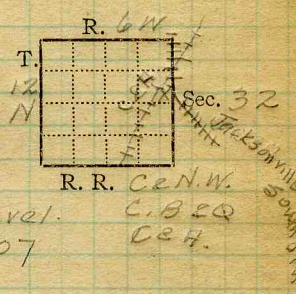
USED IN COOP. REPT., 1912.

0432*
0132

II = 13 = 12



Mine Name or No., *No. 4*
 In mile _____ from *Girard*
 Operator, 19*21* *Nash Coal Co*
 (*Illinois Coal & Coke Co*)
 Operator, 191



Entrance, *shaft* Elev., *677.97* ft. } above, *sea level.*
 } below,
 Depth to bottom coal, *354.90* ft. Alt. *320.07*

SURFACE DATA.

- A. Topography, *Rolling.* See
- B. Surficial materials. (1) Character, *Till*
- (2) Thickness, *No information* (3) Effect on mining and shaft-sinking, of former drainage lines, underground water strata, etc. *No information*

- C. Outcrops, (1) Character, See
- (2) Structure, See
- (3) Fossil horizons, See
- Collection No.,
- (4) Evidences of subsidence, See
- D. Note collection of mine maps, drill records and shaft logs.

See drill record sheet,

E. Notes on surrounding area,

See

Coal bed name: Local, Survey No. *6*

Collector, *Notzaband*

Mine, *Empire #4* Co. *Macoupin* Index No. *0632.95*

L.—SURFACE SHEET (Geol.) # *343=12*



NDEX

(36713-500-7-20)

K3

Roll 6000' from bottom in 1st N off
Main W. Roll 300' long and comes down
about 4' into the coal. Coal thins out
floor remaining level

Collector

X- /

~~243~~ ³¹² EXTRA NO. 1

Index No.

0632.95

County

Macoupin



INDEX

(36713-500-7-20)

The top coal from 14" to 22" is usually left for a roof

I Above this is a massive black shale
 Z from 1" to 6' becoming a crumbly
 G gray shale in some places. Above this is
 of a lighter gray crumbly shale. Above this
 is limestone which lenses out
 laterally in some places. In some falls
 it was broken showing from 1" to 2" in
 thickness.

Above the Ls is 4' of green and brown
 shale. Above this is a crumbly gray shale
 above which is Limestone

K3 In the first North is a roll.
 There is a conglomerate with a
 sandy matrix and a few coal frag-
 ments and lenses immediately overly-
 ing the coal. Above this is about 4"
 of gray sandy shale. The ^{lower} Ls was
 absent.

Collector

X-

Index No.

0632.95

EXTRA NO. 1

County

Macoupin



Operator, *Illinois Coal & Coke Co* Date *Aug. 31, 1921*
 Mine, *Empire #4* Sec. *32* T. *12N.R. 6W*
 Location in mine, *Face of Main W*

GRAPHIC SECTION		DESCRIPTION OF SECTION (AT POINT SAMPLED)	
In.	No.	No.	(Note character and thickness of roof) Inches
		1	Coal (left as roof) App 14" 5"
		2	Coal 1/8
		3	Pyrite band 10 1/2
		4	Coal 3/8
		5	Grey shale band 8
		6	Coal 3/8
		7	Pyrite lens 5
		8	Coal 1 1/2
		9	charcoal band 7 1/2
		10	Coal 1/2
		11	Pyrite lens 3 3/4
		12	Coal 3/4
		13	Grey shale } B.B. 1/2
		14	Coal 1/4
		15	Pyrite 22 1/2
		16	Coal
			Tap 68 1/2
			(Note character and thickness of floor)
			Total thickness of coal. 68 3/4
			Condition, <i>Damp, fresh</i> Time, <i>3</i> hr. <i>46</i> min. ¹⁴⁷¹ 11.25
			Wt. Gross, <i>20</i> lbs. Net, lbs. ₄₆
			What Nos. shipped by Co.?
			Excluded from sample: No. <i>1, 5, 7, 11, 13, 14, 15</i>
			Sample represents <i>51 7/8</i> in. tons.
			Impurities? How do they occur?

(1 division = 3 in.)

Sample No. *7-21-34* Can No. *07358* Lab. No. *81327*
 Collector, *Thurston* Coal: Survey No.
 Mine, *Empire #4* Co. *Macoupin* Index No. *0632-95*



Operator, *Illinois Coal & Coke Co* Date *Aug. 31, 1921*
 Mine, *Empire #4* Sec. *32* T. *12N R. 6W*
 Location in mine, *Room 1, 2nd N off Main W*

GRAPHIC SECTION		DESCRIPTION OF SECTION (AT POINT SAMPLED)	
In.	No.	No.	(Note character and thickness of roof) Inches
		1	Coal (left as roof) 12-22" 2 3/4
		2	Coal 1/4
		3	Pyrite lens 7
		4	Coal 1
		5	Charcoal & shale band 8 3/4
		6	Coal 1/8
		7	Pyrite lens 21 1/2
		8	Coal 1/2
		9	Gray shale B.B. 4 1/4
		10	Coal 1/8
		11	Pyrite band 21
		12	Coal
<i>Tape 67</i>			
(Note character and thickness of floor)			
Total thickness of coal. 67 1/4			
Condition, <i>Dry, fresh.</i>		Time, <i>3</i> hr. <i>4</i> min. 12:35	
Wt. Gross, <i>26</i> lbs.		Net, lbs.	
What Nos. shipped by Co.?			
Excluded from sample: No. <i>1, 5, 9,</i>			
Sample represents <i>43 3/4</i> in. tons.			
Impurities? How do they occur?			

(1 division = 3 in.)

Sample No. *F-21-35* Can No. *07165* Lab. No. *81328*
 Collector, *Thurston* Coal: Survey No. *6*
 Mine, *Empire #4* Co. *Macoupin* Index No. *0632.95*
 R.—COAL SAMPLE SHEET. *#243 = 12*



Operator, *Illinois Coal & Coke Co* Date *Aug. 31, 1921*
 Mine, *Empire #4* Sec. *32* T. *12N* R. *6W*
 Location in mine, *Room 38, 12th N off 10th W.*

GRAPHIC SECTION		DESCRIPTION OF SECTION (AT POINT SAMPLED)	
In.	No.	No.	(Note character and thickness of roof) Inches
		1	Coal (left as roof) App. 12" 8
		2	Coal 1/4
		3	Pyrite band 8
		4	Coal 3/4
		5	Pyrite & shale band 13
		6	Coal 1/2
		7	Charcoal 10 1/2
		8	Coal 3/8
		9	Pyrite band 6
		10	Coal 1/2
		11	Pyrite band } B.B. 1 1/2
		12	Coal } 3/8
		13	Pyrite band } 19 1/4
		14	Coal } 1/4
		15	Brown shale } 5 3/4
		16	Coal } 75 1/4
			Tape 75 1/4
			Fairly hard, medium grey floor clay
			(Note character and thickness of floor)
			Total thickness of coal. 75
			Condition, <i>Dry, fresh</i> Time, <i>2</i> hr. <i>43</i> min. ³⁶⁹ 1:26
			Wt. Gross, <i>32</i> lbs. Net, lbs. 43
			What Nos. shipped by Co.?
			Excluded from sample: No. <i>1, 5, 9, 11, 12, 13</i>
			Sample represents <i>50 1/2</i> in. tons.
			Impurities? How do they occur?

(1 division=3 in.)

Sample No. *F-21-36* Can No. *823* Lab. No. *81329*
 Collector, *Netzab and* Coal: Survey No.
 Mine, *Empire #4* Co. *Macoupin* Index No. *0632-95*
 R.—COAL SAMPLE SHEET. #~~243~~ = 12