



Form 180 Blue

what # mine? # 1?

not traced

No cards

Grape Creek Mng. Co.

Mine index 507


B3  
Sec. 32  
T. 19 N  
R. 11 W  
Index No.

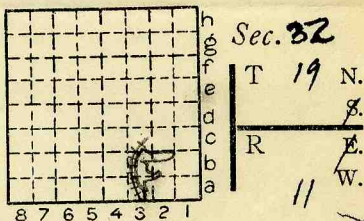


Location and Elevation Data

Location: Exact Approximate  
 (GMW) (Approximate only if no trace of record of original exists)  
 Location by Aerial photographs (Mine map in Coal Div. files Ext. 2-20-40)  
 Date (1945) Notebook No. (667) Page (85-2769)  
 Looseleaf ref. \_\_\_\_\_  
 Map files No. 14-92-36

Description of Location

Elev. on coal in pit Position in sec., 1/4 sec., 40 acres  
 \_\_\_\_\_ feet from North line  
1475 feet from East line  
1275 feet from South line  
 \_\_\_\_\_ feet from West line



Other description: \_\_\_\_\_

Farm \_\_\_\_\_

No. \_\_\_\_\_

Company \_\_\_\_\_

Grape Creek  
Mg. Co.

Tipple in Sec. 6 T. 18N R. 11W  
See pit #7 2405--

No. (?)

County No. 601 (2)

Mine notes 1940

In tabulations

Elevation \_\_\_\_\_ ft.

By \_\_\_\_\_

Method: Level, transit, alidade, hand level

Elevation of \_\_\_\_\_

Height of point above ground \_\_\_\_\_

Date \_\_\_\_\_ Notebook \_\_\_\_\_ P. \_\_\_\_\_

Looseleaf ref. \_\_\_\_\_

Map files No. \_\_\_\_\_

Description of item: (drill hole, mine, etc.) Strip mine Abandoned

County Vermilion

Quadrangle Danville  
(149)

Index No. 1732 B3



Operator, **Grape Creek Mining Co (stripping)** Date **8-15-40**  
**COULTER NO. 1** Pit #1 (inactive) - Sec 22, T19N, R11W T. R.  
**COULTER NO. 2** Pit #2 (active) - Sec 5, T18N, R11W  
 Location in mine, **Tipple sample of 1 1/4" segs. & 4" = 1 1/4" nut**

First increment at 7:10 Am.

GRAPHIC SECTION		DESCRIPTION OF SECTION (AT POINT SAMPLED)		
In.	No.	No.	(Note character and thickness of roof)	Inches
<p>Coal is trucked from pit to tipple, elevated on belt conveyor to reciprocating screens, 6", 4", &amp; 1 1/4" round hole. Also available are 2" and 7". Lump, egg, and nut sizes are loaded by loading booms and are picked by one man at each of the two smaller sizes from the conveyor of the boom. 1 1/4" segs is re-elevated by conveyor belt to a loading chute.</p> <p>Screenings were sampled at head of the latter conveyor belt, and the nut (4" &amp; 1 1/4") was sampled at end of loading boom. Increments of 5 lb. &amp; 10 lb. respectively, checked repeatedly with a spring scale, were taken, on a 10-minute schedule, based on operation of the tipple up until 2 P.M. Due to adverse conditions in the pit, however, the shovel stopped loading about 10:15 Am and the tipple stopped at 10:40. We had 30-40 minutes notice of this, at which we speeded up the sampling schedule to as fast as possible - about 5 min. intervals. This gave us a total of 23 increments at each point, although at the last two samplings we took approx. double-size increments. All increments were immediately placed in metal</p> <p style="text-align: center;">(Note character and thickness of floor)</p> <p style="text-align: right;">Total thickness of coal. <b>(OVER)</b></p>				
		Condition,	Time,	hr. min.
		Wt. Gross,	lbs. Net,	lbs.
What Nos. shipped by Co.?				
Excluded from sample: No.				
		Sample represents	in.	tons.
Impurities? How do they occur?				
(1 division = 3 in.)				

**COULTER NO. 503**  
**504**

Sample No. \_\_\_\_\_ Can No. \_\_\_\_\_ Lab. No. \_\_\_\_\_  
 Collector, **JASimon and C.C. Boley** Coal: Survey No.   
 Mine, **Grape Creek Mining Co. Vermilion** Index No. \_\_\_\_\_  
**R.—COAL SAMPLE SHEET.** 2405.

drums, the tops of which were kept closed.

The samples weighed 155 lb. and 268 lb. for the  $1\frac{1}{4}$ " segs and  $4" \times 1\frac{1}{4}"$  nut respectively. Each was riffled in two with the large (4" openings) riffle, crushed to  $\frac{1}{4}"$  in the hammer mill, and cut to 2  $\frac{1}{2}$ -gallon (4-5 lb.), one of which went to Dr. Rees and the other to Cooper of the USBM.

This coal is the "upper" seam, that is, Danville No. 7 and not the true "Gorge Creek", despite its name. Its chief impurity consists of pyrite concretions, with scattered pyrite and calcite fringes.

CCB 9/3/40



Operator, Grape Creek Mining Co. (stripping) Date 8/14/40  
 Mine, Pit #1 in Sec. 32, T19N, R11W;  
#2 (now active) in Sec. 5 T. 18 N R. 11 W  
 Location in mine, Pit #2 Sec 5, 1400 ft. S. of sect. line, 400 W. of  
C-E-I tracks.

GRAPHIC SECTION		DESCRIPTION OF SECTION (AT POINT SAMPLED)		
In.	No.	No.	(Note character and thickness of roof)	Inches
			Gray shale roof, 20-30' thick	
13"	1	1.	Coal, very clean Fusain parting	13
		2.	Coal Fusain parting	9 1/2
9 1/2"	2	3.	Coal, occasional pyrite fringes, no bedded impurities	32
32"	3		Fire clay floor, unknown thickness (Note character and thickness of floor)	54 1/2
			Total thickness of coal.	
		Condition, <u>Fresh</u>	Time, hr.	min.
		Wt. Gross, lbs.	Net, <u>50</u> lbs.	
		What Nos. shipped by Co.?	<u>All</u>	
		Excluded from sample: No.		
		Sample represents <u>54 1/2</u> in.	tons.	
		Impurities? How do they occur?		

(1 division = 3 in.)

Sample No. 1 Can No. 607 Lab. No.   
 Collector, J. A. Simon and C. C. Boley Coal: Survey No.   
 Mine, Grape Creek Mining Co. Co. Vermilion. Index No. 2405



Operator, *Grape Creek Mining Co (stripping)* Date *8/14/40*  
 Mine, *Pit #1 in Sec 32, T19N, R11W;*  
*#2 (now active) in — Sec. 5 T. 18N R. 11W*  
 Location in mine, *Pit #2 - Sec 5, 1500 ft. S. of sect. line, 80 ft. W.*  
*of C & EI tracks*

GRAPHIC SECTION		DESCRIPTION OF SECTION (AT POINT SAMPLED)		
In.	No.	No.	(Note character and thickness of roof)	Inches
<i>Gray shale roof - 20'-30' thick</i>				
<i>6 1/2"</i>	<i>1</i>	<i>1.</i>	<i>Coal</i>	<i>6 1/2</i>
<i>2 1/2"</i>	<i>3</i>	<i>2.</i>	<i>Local "Sulfur ball"</i>	<i>1</i>
<i>2 1/2"</i>	<i>3</i>	<i>3.</i>	<i>Coal</i>	<i>2 1/2</i>
<i>7"</i>	<i>5</i>	<i>4.</i>	<i>Local pyrite streak</i>	<i>1/4</i>
<i>6 1/2"</i>	<i>6</i>	<i>5.</i>	<i>Coal</i>	<i>7</i>
			<i>Fusain parting</i>	
		<i>6.</i>	<i>Coal</i>	<i>6 1/2</i>
			<i>Fusain parting</i>	
		<i>7.</i>	<i>Coal</i>	<i>19 1/2</i>
			<i>Sulfur stringer</i>	
<i>19 1/2"</i>	<i>7</i>	<i>8.</i>	<i>Coal, slightly better, pyrite facings</i>	<i>17</i>
<i>17"</i>	<i>8</i>		<i>Fire clay floor, unknown thickness</i>	
			(Note character and thickness of floor)	
			Total thickness of coal.	<i>60 1/4</i>

Condition, *Fresh* Time, hr. min.  
 Wt. Gross, lbs. Net, *68* lbs.  
 What Nos. shipped by Co.? *All but No. 2*

Excluded from sample: No. *2*  
 Sample represents *59 1/4"* in. tons.  
 Impurities? How do they occur? *Mainly pyrite concretions; otherwise quite clean.*

(1 division = 3 in.)  
 Sample No. *2* Can No. *600* Lab. No. \_\_\_\_\_  
 Collector, *J. A. Simon and C. C. Boley* Coal: Survey No.   
 Mine, *Grape Creek Mining Co.* Co. *Vermilion* Index No. *2405.*  
**R.—COAL SAMPLE SHEET.**



Operator, } Grape Creek Mining Co. (stripping) Date <sup>15</sup> Aug 1<sup>st</sup>, 1940  
 Mine, } Pit #1 in Sec 32, T19N, R11W; #2 in Sec. 5 T. 18N R. 11W  
 Location in mine, Pit #2, Sec. 5, 18N, 11W, <sup>1400</sup> ~~1400~~ ft. S. of section  
 line <sup>300</sup> ~~300~~ ft. W. of C & E tracks

GRAPHIC SECTION		DESCRIPTION OF SECTION (AT POINT SAMPLED)	
In.	No.	No. (Note character and thickness of roof)	Inches
		Gray shale roof, 20-30' thick	
10"	1	1. Coal	10"
		2. "Sulfur ball"	1"
1"	2	3. Coal	2"
2"	3	Fusain parting	
5"	4	4. Coal	5"
5"	5	Fusain ptg.	
1 1/2"	6	5. Coal ; fusain ptg.	5"
3 3/4"	7	6. Coal ; fusain ptg.	1 1/4"
2 3/4"	8	7. Coal ; fusain ptg.	3 3/4"
		8. Coal ; fusain ptg.	2 3/4"
6 1/4"	9	9. Coal	6 1/4"
1 1/2"	10	10. Clay streak	
1/4"	11	11. Coal	1 1/2"
5 1/2"	12	11. Clay band	1/4"
5"	13	12. Coal	5 1/2"
4 3/4"	14	13. Coal, somewhat softer, calcite traces, 2nd pyrite facings	5"
		14. Coal	4 3/4"
		(Note character and thickness of floor) <i>Fine clay</i>	
		Total thickness of coal. <b>54"</b>	

Condition, **Fresh** Time, hr. min.  
 Wt. Gross, lbs. Net, **68** lbs.  
 What Nos. shipped by Co.? **All but Nos. 2 & 11**  
 Excluded from sample: No. 2 & 11  
 Sample represents **52 3/4"** in. tons.  
 Impurities? How do they occur? **Random pyrite con-  
 cretions, narrow clay band**

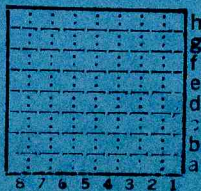
(1 division = 3 in.)  
 Sample No. **3** Can No. **605** Lab. No.   
 Collector, **J.A. Simon and C.C. Boley** Coal: Survey No.   
 Mine, **Grape Creek Mining Co. Co. Vermilion** Index No. **2405.**  
**R.—COAL SAMPLE SHEET.**



Form 180 Blue

Pit #1 32-19N-11W B3  
 Pit #2 556-18N-11W #3

Grape Creek Mining Co.  
 #1 (?)



Sec. 32 B3

T. 19 N. #3  
 R. 11 E.  
 W.

Index No.

Mine index 507

5-56  
 Co. # - 505  
 601





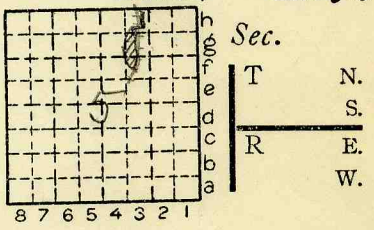
Location and Elevation Data

Location: Exact Approximate  
 (Approximate only if no trace of record of original exists)  
 Location by Mine map - Coal Div. files + Aerial photographs  
 Date..... Notebook No..... Page.....

Looseleaf ref.....  
 Map files No.....

*Shipping*  
 Description of Location  
 Position in sec., 1/4 sec., 40 acres  
 Pit #1 Pit #2  
 Sec. 32 5  
 Twp. 19N 78N  
 Rn. 11W 11W  
 Co. # 601 Co. # 505

.....feet from North line  
 .....feet from East line  
 .....feet from South line  
 .....feet from West line



*opened 1939*  
*Abandoned 1942*  
 State mine Index # S-56  
 Other description:.....

Farm.....  
 No.....

*Mine Map. Ext. Feb. 20, 1940*  
*(Strip area taken from aerial photos)*  
*Location of loading tippie.*  
*T. 18N R. 11W Sec. 6*  
*Tippie E. side C.C. & St. L. R.R. yards.*  
*Mine map in Coal Div. Files*

Company Grape Creek  
Mining Co.  
 No. 7  
 County No. 505  
 in tabulations

Mine Notes Elevation.....ft.  
 1940 (Boley) By.....

Method: Level, transit, alidade, hand level

Elevation of.....  
 Height of point above ground.....  
 Date..... Notebook..... P.....  
 Looseleaf ref.....

Map files No.....  
 Description of item: (drill hole, mine, etc.) Strip mine

County Vermilion Quadrangle Danville Index No. 1705-  
1732--  
(#505) 2405--

(50167-5M-2-38) 2 *Tippie 2A0642*  
 Pits loc. { 1732 A } 2,3  
 { 2405 B } 3



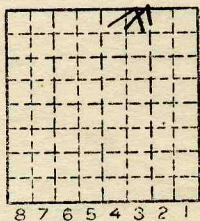
Location and Elevation Data

Location: Exact Approximate
(Approximate only if no trace of record of original exists)
Location by C. G. Boley (In field)
Date July, 1939 Notebook No. Page
Looseleaf ref.
Map files No.

Description of Location

Position in sec., 1/4 sec., 40 acres

feet from North line
feet from East line
feet from South line
feet from West line



Sec. 6
T 18 N.
R 11 W.

120' S } NE 1/4
912' W } NE 1/4

Other description: Location of
tipple. Strip pit
is about one mile
south and east in
section 5.

Farm
No.
Company Grape Creek C. C.
Abd
No.
County No.

S-56 Elevation ft.
By

Method: Level, transit, alidade, hand level

Elevation of
Height of point above ground
Date Notebook P.
Looseleaf ref.

Map files No.

Description of item: (drill hole, mine, etc.) Strip mine tipple

30' Taperal 5'0" #7

County Vermilion Quadrangle Danville Index No. 2406 h3 2

tipple



Mine originally operated by: (1)

Date 1939 Grape Creek Mining Co

Original name or number: No. 7  
 Illinois Coal Report \_\_\_\_\_ p. \_\_\_\_\_

LATER OPERATORS

Date	Operator	Name or No.
2 <u>1940</u>	<u>Gr. Crk. Mng. Co.</u>	<u># 7</u>
3 <u>1942</u>	<u>idle</u>	
4		
5		
6		
7		
8		
9		
10		
11		
12		
13		
14		

\*Also owners

#See ownership sheet

Railroad, Wagon, Strip, Idle, Abandoned

Strip Mine

IDENTIFICATION

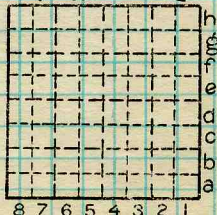
County No. \_\_\_\_\_

Coal No. \_\_\_\_\_

Coal Report No. S-56

7

Quad. Danville



Sec. 32

T. 19 N. 8.

R. 11 E. ✓  
W. \_\_\_\_\_

Index No. \_\_\_\_\_

COAL MINE OPERATOR

1732 133  
Tipple Index 2406 #42



( Sheets ) COAL PRODUCTION ( Sheet )

Period						Tons		
Mo.	Day	Year	Mo.	Day	Year			
					1939			10 264
					1940			67 753
					NO PROD. AFTER MAR. 1941			14 419
					1942			

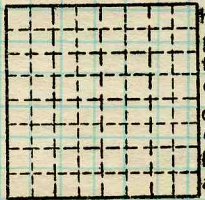
SUMMARIES

No.	to	No.			
1939		1941			92 436

Railroad, Wagon, Strip, Idle, Abandoned 1942 STRIPMINE Sec. 32

IDENTIFICATION

County No. \_\_\_\_\_ Coal No.  7  
 Coal Report No. 5-56  
 Quad. DANVILLE  
 County VERMILION



T. 19 N.  
 R. 11 W.  
 Index No.

COAL MINE-PRODUCTION

1732 B3





( Sheets ) **COAL PRODUCTION** ( Sheet )

Period						Tons	
Mo.	Day	Year	Mo.	Day	Year		
1	1	1939	12	31	1939	10	264
1	1	1940	12	31	1940	67	753
						<u>78</u>	<u>017</u>
1	1	1941	12	31	1941	14	419

Grape Creek Mining Co # 7

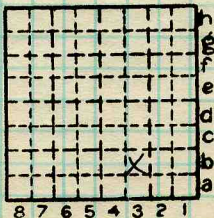
SUMMARIES

No.	to	No.								
1	1	1939	to	12	31	1940	✓	✓	78	017

Railroad, Wagon, Strip, Idle, Abandoned

IDENTIFICATION

County No. \_\_\_\_\_ Coal No.   
 Coal Report No. S-56  
 Quad. Danville  
 County Vermilion



Sec. 32

T. 19 N.  
 R. 11 W.  
 Index No.

1732 B3

COAL MINE—PRODUCTION

ILLINOIS GEOLOGICAL SURVEY, URSANA

