



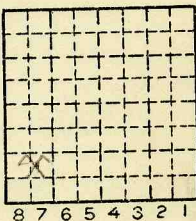


Location and Elevation Data

Location: Exact Approximate
(Approximate only if no trace of record of original exists)
Location by Dept Mines & Minerals f, l m Frame 83 Reel 3141
Date Notebook No. Page
Looseleaf ref.
Map files No.

Description of Location

drift:
feet from North line
feet from East line
244' 1120 feet from South line
331' 820 feet from West line



Sec. 16
T 19 N.
R 12 W.

NW NWSW sec. 16
Other description: L-40
Idle 1938

Farm
No.
Company Thomas Bros. Coal Co.
No.
County No.

Elevation 670' ft.
By E.T.M.

Method: Level, transit, alidade, hand level

Elevation of
Height of point above ground
Date Notebook P.
Looseleaf ref.

Map files No.
Description of item: (drill hole, mine, etc.) Abd. mine
Drift mine - 95' to 5' 8" #7 Coal
County Vermilion Quadrangle Danville Index No. 1816B7



Mine originally operated by: (1) Thomas Bros. Coal Co.

Date 1936

Original name or number: Illinois Coal Report 1936 p.

LATER OPERATORS

Date	Operator	Name or No.
2		
3		
4		
5		
6		
7		
8		
9		
10		
11		
12		
13		
14		

\*Also owners

#See ownership sheet

Railroad, Wagon, Strip, Idle, Abandoned

IDENTIFICATION

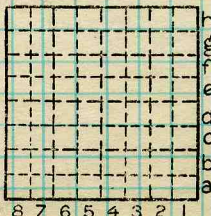
County No. \_\_\_\_\_

Coal Report No. L-40

Quad. Danville

County Vermilion

Coal No. 7



Sec. 16  
 19 N.  
 T. \*  
 R. 12 \*  
 W.  
 Index No. 1816B7

COAL MINE OPERATOR

COUNTY NO. 1816B7



( Sheets ) COAL PRODUCTION (Sheet )

Period						Tons	
Mo.	Day	Year	Mo.	Day	Year		
		1936					1 600
		1937					240

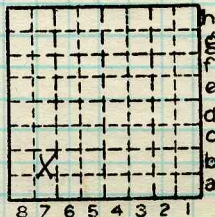
SUMMARIES

No.	to	No.		
				1,840

Railroad, Wagon, Strip, Idle, Abandoned

IDENTIFICATION

County No. \_\_\_\_\_ Coal No. 1938  
 Coal Report No. 2-40  7  
 Quad. 149  
 County Vermilion



Sec. 16  
 T. 19 N. S/  
 R. 12 W. E/  
 Index No.

COAL MINE-PRODUCTION  
 ILLINOIS GEOLOGICAL SURVEY, URBANA

