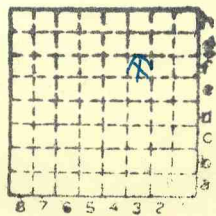


IS65 Index No. 4128

Campbell BK CC.

512



Sec. 30

T. 9 N.
S.

R. 4 E.
W.

Index No.



Mine originally operated by: (1)

Campbell B K Coal Co.

Date

Original name or number:

Illinois Coal Report

p.

LATER OPERATORS

Date

Operator

Name or No.

2

3

4

5

6

7

8

9

10

11

12

13

14

* Also owners

#See ownership sheet

Railroad, Wagon, Idle, Abandoned Drift

LOCAL MINE

IDENTIFICATION

County No. 512

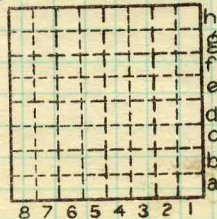
Coal No.

6

Quad. Marion

Part

County Williamson



Sec. 30

T. 9 N. S.

R. 4 E. W.

Index No.

0830 f3

COAL MINE OPERATOR



LOCATION AND ELEVATION

Location: side R. R.
side R. R.
side Highway No.

on top. map Location sheet

Elevation: Method, 1. Est. () ft.
2. Inst. (kind Hand Level) 518 ft.

By Data sheet
DEPTH
Authority To coal ft.
Authority Rail to rail ft.
Top of coal above rail. (Est. Rule) ft.
To coal 5 ft.

ALTITUDE OF TOP OF COAL
By estimated data
By instrumental data 513 ft.

Thickness
Max. in. Min. in. Aver. 60 in.

GEOLOGICAL DATA

Mine notes, date

Coop No. Pyr. inv. Coal Ash inv.

CHEMICAL DATA

Analyses Face U. I. B. M. Others
Car U. I. B. M. Others
Org. Sulf U. I. B. M. Others
Ash fusion U. I. B. M. Others
Ash anal. U. I. B. M. Others
U. I. B. M. Others

Classification

Misc. tests: Coking. Cleaning Boiler

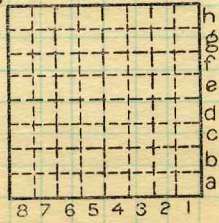
Published descriptions:—

Railroad, Wagon, Idle, Abandoned Drift

IDENTIFICATION

County No. 512
Quad Marion
County Williamson

Coal No.
Part 6



Sec. 30
T. 9 N. S.
R. 4 E. W.
Index No. 0830 f3

COAL MINE LOCATION AND DATA