

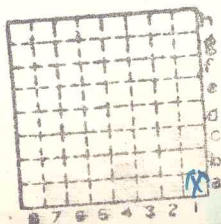
Notes

Sakara.
O'p
Yawa

#14

mi. #128

589



Sec. 30

T. 9 N. S.

R 68 E. W.

Index No.

309?

Town, ~~Harrisburg~~ Redford.
Local Authority,

Surface alt., 409 ft.
Depth to coal, 139 ft.
Alt. top coal, 270 ft.
Thickness: Av. 72 in.
Max. 96 in., Min. 56 in.

Level: Auth., Deuchler NB97-p72

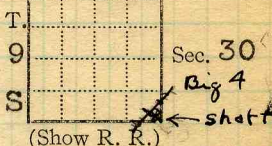
Method, H.L.

Twp. - Harrisburg

R. R., ~~Big 4 CCC + St. 2.~~

550' W of E line.
25' N of SE cor.

R 6 E



Location: authority, Deuchler; O'G. map

Operator

Mine Name or No.

1915 Harrisburg Big Muddy Coal Co No. 14

Successor to O'Gara Coal Co No. 14

Date 1915

Succeeded by *O'Gara Coal Co* #14

Date 332 S. Michigan Ave, Chicago.

Succeeded by

Date

PRODUCTION.

				Fiscal		U. S. No.	
1915				93	552		
1925-26	Idle (Dept. of mines)						
1927	- 0 -						
							#589
							✓

Geol. Notes? Yes

Coop. No.

Coal secs. ? 3

Analyses No. 1115, 12911-2-3

18-19

COUNTY

Examined by Wheeler; *Netzeband*

Ref. *Looseleaf*

Coal bed name: Local SHIPPING MINE

Survey No. 5

County Saline

Index No. 0830.90

K.—ACTIVE SHIPPING OR LOCAL COAL MINE.

vale June 1922



COAL MINE NOTES.

COUNTY *Saline*

TOWN *Harrisburg*

MAP No. *0830*

T. *95*

R. *6E*

S. *30SE* Cor.

OPERATOR *Harrisburg Big Muddy Coal Co.*

OFFICE *Marquette Bldg. Chicago.*

MINE *Ogona #14*

TIPPLE *Automatic Dump.*

ENGINES

BOILERS

DRUM

SHAFT

CAGE

HAULAGE *Mule*

CARS *2 ton wooden*

VENTILATION

DRAINAGE

SPRINKLING

WORKING SYSTEM

MINING METHODS

Shot on solid.

SIZE OF ENTRIES—MAIN

CROSS

ROOM

NECK

SIZE OF PILLARS—MAIN

CROSS

ROOM

SHAFT

CHAIN

BARRIER

AMOUNT OF TIMBERING

SIZE

PROPORTION OF COAL UTILIZED

AMOUNT AND CHARACTER OF WASTE

ACREAGE OF COAL MINED

ACREAGE OF COAL REMAINING

PROPORTION OF MINE RUN AND SCREENED COAL

METHOD OF SIZING *3 track shaker screen.*

RESCREENED

SIZES

PER CENT

PROPORTION AND SIZE OF WASHED COAL

DAILY OUTPUT *500 tons.*

UTILIZATION

MARKETS

FREIGHT RATES

SELLING PRICES AT MINE

0830

COAL LAND OWNED

LEASED

HELD IN FEE

COST OF LAND OWNED

LEASED

HELD IN FEE

ADDITIONAL NOTES



COAL MINE NOTES.

CONTINUED.

OPERATOR *Harrisburg Big Muddy Coal Co.* MINE *O'Gara #14*
 ENTRANCE *Shaft.* NAME OF COAL BED *#5*
 ELEVATION *409* THICKNESS OF COAL
 DEPTH TO FLOOR *145* MAX. MIN. AV.
 ALTITUDE OF COAL *264*
 LOCATION OF SECTION *Room 3 off 2nd East. off Main North.*

1300', N.E. Shaft.

No.	SECTION.	In.
1	<i>Hard Gray shale</i>	
2	<i>Draw slate</i>	<i>4</i>
3	<i>Coal</i>	<i>71</i>
4	<i>Hard shale</i>	
5		
6		
7		
8		
9		
10		
11		
12		
Tape <i>5'-11"</i>		Total <i>71</i>

SECTION



SAMPLE No. *W 37.*

CAN No.

CONDITION

GROSS WEIGHT *20*

TIME EXPOSED *45' 71"*

NOT SHIPPED

NOT INCLUDED

PHYSICAL PROPERTIES BY NUMBERS

ROOF *shale good roof. Draw slate separates into 1st and 2nd draw, second held up by props. until face has advanced*
 FLOOR *Shale. good floor. [to' and then let down.]*

DIP

FAULTS, ETC. *No fault or dikes noted.*

GAS

COLLECTOR *Wheeler Deuchler*

REFERENCE *N.B. 139; P 22*
N.B. 97; P 72

DATE

0830

5

Operator, **Harrisburg B.M. C. Co.** Date **1/28/08**
 Mine, **No.14** Sec. **30** T. **9 S** R. **6 E**

Located, _____ miles from

Location in mine, **Rm 3 off 2nd E off main N.1300 NE st**

GRAPHIC SECTION		DESCRIPTION OF SECTION (AT POINT SAMPLED)		
In.	No.	No.	(Note character and thickness of roof)	Inches
			Hard gray shale	
			Draw slate 4 in	
			(1st & 2nd)	
	1		Coal	71
			Hard shale	
			(Note character and thickness of floor)	
			Total thickness of coal.	
6.04			Condition,	Time, hr. 45 min.
33.49			Wt. Gross, 20 lbs.	Net, lbs.
			What Nos. shipped by Co.?	
49.58			Excluded from sample: No.	
			Sample represents	in. tons.
16.89			Impurities? How do they occur?	

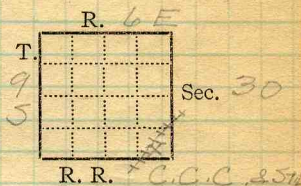
Sample No. **W.37** Can No. _____ Lab. No. **1115**

Collector, **Wheeler NB.139 p 22** Coal: Survey No. **5**

Mine, **No.14** Co. **Saline** Index No. **0830**

R.—COAL SAMPLE SHEET.

Mine Name or No., *O'Gara, No. 14*
4 mile *SW* from *Harrisburg*
 Operator, 19*11* *O'Gara Coal Co*



Operator, 191

Entrance, *shaft* Elev., *409.2* ft. { above, *509 level*
 { below,
 Depth to bottom coal, *138.7* ft. Alt. *270.5*

SURFACE DATA.

- A. Topography, *Rolling* See
- B. Surficial materials. (1) Character, *Till*
- (2) Thickness, *No information* (3) Effect on mining and shaft-sinking, of former drainage lines, underground water strata, etc. *No information.*

- C. Outcrops, (1) Character, See
 (2) Structure, See
 (3) Fossil horizons, See
 Collection No.,
 (4) Evidences of subsidence, See
- D. Note collection of mine maps, drill records and shaft logs.

See drill record sheet,

- E. Notes on surrounding area,

See

Coal bed name: Local, Survey No. *5*

Collector, *Netzband*

Mine, *O'Gara #14* Co. *Saline* Index No. *0830.80*

L.—SURFACE SHEET (Geol.)

K. (5) Physical character of coal in benches,

(a) Relative hardness, *Bottom hard, top fractured so that hardness is indeterminate.* (rest of face)

(b) Lustre, *Glance with dull predominate top, bright with some dull*

(c) Fracture, *Blocky*

(d) Texture, *Laminated Face N54W Butt* N46E
See

(6) Impurities in coal, other than bedded, *Pyrite lenses up to 1" thick*

(a) Kind, *Also calcite or gypsum fracture fillings*

(b) Position and persistence, *Pyrite in upper coal, other thruout bed.*

(c) Rejected, *Large pyrite lenses* Ease of separation,
See

L. Floor: (1) Material, *Floor clay*

(2) Thickness, *± 2' (Very indefinite) Ls. below.*

(3) Variation, *No information*

(4) Note character, condition, tendency to heave, relation to undercutting commercial value. *Dark, grey shale, a few slickensides, no known tendency to heave, undercut upon it, value unknown.*

See

(5) Clay sample No. Location,

M. Stratigraphy,

(1) Fossiliferous horizons underground, *The grey roof shale contains fragments of plant remains.*

Collection No. Location,

N. Notes on effect of deep drilling in coal mine areas.

See

Collector, *Netzeband*

Coal: Survey No. 5

Mine, *O'Gara #14* Co. *Saline*

Index No. *0830.80*

F. Thickness of rock above bed worked,

(1) Important variations, *No information*

See

G. Note presence of strata having important effect on mining,

Grey roof shale

See

(1) Position, *Above draw slate.*

(2) Character, *Soft, massive, stands well.*

(3) Persistence, *Thru out mine.*

(4) Other workable coal beds, *?*

See

H. Cap rock, *Limestone reported.*

(1) Thickness, *No information*

(2) Height above coal, *No information*

See

I. Immediate roof, *Grey shale*

(1) Thickness, *?* (2) Contact with coal,

(3) Horizontal variation, *No variation in*

character. Thickness unknown. See

J. Draw slate. (1) Thickness, (2) Contacts

Feather edge to 10"

(3) Persistence, *Thru out mine.*

K. Coal bed: Max. *96* Min. *56* Av. *58-65* inches

(1) Benches, *None*

(a) Position,

(b) Persistence,

See

(2) Bedded impurities, kind, position in benches, persistence, ease of separation. *Charcoal partings*

& lenses. Clay bands (1/4 to 2")
The clay is interlayered with coal in the upper part of the bed.

See

(3) Irregularities in continuity of bed (due to deposition, erosion, or movement, *Rolls & faults*

See

(a) Effect on mining, *Fault stops mining on the west*

See

SECTION				
Ft.	in.	Name	Index	Sym.

Collector, *Netzeband*

Mine, *O'Gara #14* Co. *Saline*

Coal: Survey No. *5*

Index No. *0830-80*

K3

Roll 1500' from bottom in 4th S.
 App 150' long, coal drops at least 6'
 (goes below level of floor), coal full
 thickness, shale in roof free from
 chips, very little shattered.

The west workings are stopped at a
 fault which trends a little West of North.
 The displacement averages about 4'.
 The fault is nearly at the western
 boundary so no attempt is made to pick
 up the coal on the west side. All the
 workings in the west are abandoned.

52

The grey shale makes a very good
 roof and very little timbering is required
 in most parts of the mine.

Operator, *O'Gara Coal Co.* Date *July 9, 1921*
 Mine, *No 14* Sec. *30* T. *9 S* R. *6 E*
 Located, *at* miles from *Ledford*
 Location in mine, *1st S. off the 2nd W. off the 4th S.*

GRAPHIC SECTION		DESCRIPTION OF SECTION (AT POINT SAMPLED)		
In.	No.	No.	(Note character and thickness of roof)	Inches
<i>5</i>	<i>1</i>		<i>Shale Roof</i>	
<i>38</i>	<i>2</i>	<i>1</i>	<i>Coal</i>	<i>5</i>
		<i>2</i>	<i>Pyrite</i>	<i>3/8</i>
		<i>3</i>	<i>Coal with pyrite lenses</i>	<i>51</i>
		<i>4</i>	<i>Pyrite</i>	<i>1/8</i>
		<i>5</i>	<i>Coal Tape</i>	<i>33</i>
		<i>6</i>		<i>89 1/2</i>
<i>51</i>	<i>3</i>		<i>Tape 89 1/2</i>	
			<i>Floor clay</i>	
<i>1/2</i>	<i>4</i>			
<i>33</i>	<i>5</i>			
		(Note character and thickness of floor)		
		Total thickness of coal.		
		Condition, <i>As Mined</i>	Time, hr.	min.
		Wt. Gross, <i>25</i> lbs.	Net, lbs.	
What Nos. shipped by Co.?				
Excluded from sample: No. <i>2</i>				
Sample represents <i>89 1/8</i> in. tons.				
Impurities? How do they occur?				

Sample No. *1* Can No. *W-21-51* Lab. No. *12911*
 Collector, *Wilson* Coal: Survey No. *5*
 Mine, *O'Gara #14* Co. *Saline* Index No. *0830.80*
 R.—COAL SAMPLE SHEET.

Operator, *O'Gara Coal Co.* Date *July 9, 1921*
 Mine, *No 14* Sec. *30* T. *9S* R. *6E*
 Located, *at* miles from *Ledford*
 Location in mine, *Face of the 8th E off the 3rd S.*

GRAPHIC SECTION		DESCRIPTION OF SECTION (AT POINT SAMPLED)		
In.	No.	No.	(Note character and thickness of roof)	Inches
			<i>Shale Roof</i>	
<i>12</i>	<i>1</i>	<i>1</i>	<i>Coal</i>	<i>12</i>
<i>4</i>	<i>2</i>	<i>2</i>	<i>Coal with fine layers of sh</i>	<i>4</i>
		<i>3</i>	<i>Coal</i>	<i>13</i>
<i>13</i>	<i>3</i>	<i>4</i>	<i>Shale</i>	<i>2</i>
		<i>5</i>	<i>Coal</i>	<i>28 1/2</i>
<i>2</i>	<i>4</i>	<i>6</i>	<i>Charcoal</i>	<i>1/4</i>
		<i>7</i>	<i>Coal</i>	<i>36</i>
		<i>8</i>		<i>95 1/2</i>
			<i>Tap 95</i>	
<i>28 1/2</i>	<i>5</i>		<i>Floor clay</i>	
<i>14</i>	<i>6</i>			
<i>36</i>	<i>7</i>			
			(Note character and thickness of floor)	
			Total thickness of coal.	

Condition, *As Mined* Time, hr. min.
 Wt. Gross, *25* lbs. Net, lbs.
 What Nos. shipped by Co.?

Excluded from sample: No. *4*
 Sample represents *93* in. tons.
 Impurities? How do they occur?

Sample No. *2* Can No. *W-21-52* Lab. No. *12912*

Collector, *Wilson* Coal: Survey No. *5*

Mine, *O'Gara #14* Co. *Saline* Index No. *0830.80*

Operator, *O'Gara Coal Co.* Date *July 9, 1921*
 Mine, *No. 14* Sec. *90* T. *9S* R. *6E*
 Located, *at* miles from *Ledford*
 Location in mine, *Room 19 off the 1st N*

GRAPHIC SECTION		DESCRIPTION OF SECTION (AT POINT SAMPLED)		
In.	No.	No.	(Note character and thickness of roof)	Inches
6 1/8	1		<i>Single Roof</i>	
	2	1	<i>Coal</i>	<i>6</i>
		2	<i>Pyrite lens</i>	<i>1/8</i>
		3	<i>Coal upper part with pyrite stringers</i>	<i>61</i>
		4	<i>Tape 67</i>	
61	3			
(Note character and thickness of floor)				
Total thickness of coal.				
Condition, <i>As Mined</i>		Time, hr. min.		
Wt. Gross, <i>25</i> lbs.		Net, lbs.		
What Nos. shipped by Co.?				
Excluded from sample: No. <i>None</i>				
Sample represents <i>67</i> in. tons.				
Impurities? How do they occur?				

Sample No. *4* Can No. *W-21-58* Lab. No. *12913*
 Collector, *Wilson* Coal: Survey No. *5*
 Mine, *O'Gara #14* Co. *Saline* Index No. *0830.80*
R.—COAL SAMPLE SHEET.