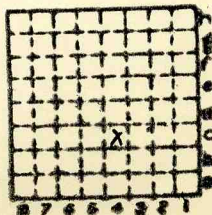




Form 180

MIDWEST MING. Co.
HAPPY HOLLOW MINE

L-55



Sec. 10

T. 33 N.

R. 4 E.

Index No. /

✓ Mine Index 2697



Mine originally operated by: (1) **Midwest Mining Co.**

Date
1936 L-55

Original name or number: **Happy Hollow Mine**
Illinois Coal Report **1936** p.

LATER OPERATORS

Date	Operator	Name or No.
2		
3		
4		
5		
6		
7		
8		
9		
10		
11		
12		
13		
14		

* Also owners

#See ownership sheet

Railroad, Wagon, Idle, Abandoned

'38

IDENTIFICATION

County No.

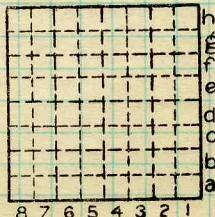
Coal No.



Part

Quad. **Ottawa**

County **La Salle**



Sec. **10**
 T. **33** N.
 R. **4** E.
 Index No. **1910**

COAL MINE OPERATOR



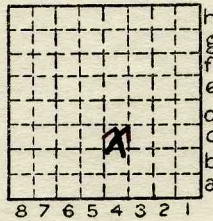
Location and Elevation Data

Location: Exact Approximate
(Approximate only if no trace of record of original exists)
Location by Dept Mines Minerals
Date Notebook No Page
Looseleaf ref
Map files No

Description of Location

Position in sec., 1/4 sec., 40 acres

feet from North line
feet from East line
feet from South line
feet from West line



Sec. 10
T 33 N.
R 4 E.
W.

Other description:
Farm No
Company Midwest Mining Company
No.
County No.

Elevation ft.

By

Method: Level, transit, alidade, hand level

Elevation of

Height of point above ground

Date Notebook Page

Looseleaf ref

Map files No

Description of item: (drill hole, mine, etc.)

LOCAL MINE

County Quadrangle Index No.

28294-5M-5-5-37

La Salle

Ottawa

1910