

2088

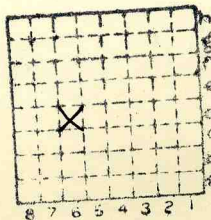


Form 180

Kerr

139

✓
Mide index 2723



Sec.	1
T.	30
N.	5
R.	3
E.	W
Index No.	



KERR

Mine originally operated by: (1)

Date

Original name or number:

Illinois Coal Report

p.

LATER OPERATORS

Date

Operator

Name or No.

- 2
- 3
- 4
- 5
- 6
- 7
- 8
- 9
- 10
- 11
- 12
- 13
- 14

Kerr

* Also owners

See ownership sheet

Railroad, Wagon, Idle, Abandoned

IDENTIFICATION

County No.

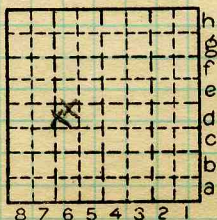
Coal No.

Quad.

Part

County

LIVINGSTON



Sec. 1

T. 30 N. S.

R. 3 E. W.

Index No.

0601

COAL MINE OPERATOR