



Form 180 Blue

Location sheet filed

Mine Map # 4103, M34, '5.1-11

Suspended op. 11/68

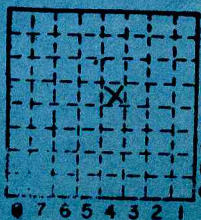
Florida Coal Co. "Little Dog Mine"

~~Little Dog C.C.~~

Mine Index # 843

COUNTY No 251

5-3



Sec. 13

T. 8 N.

R. 7 W.

Index No.

Mine Index 843

MACOPIN

E4



Mine originally operated by: (1)

Date

~~1882~~

~~Young, Fuller M^e Kinney~~

Original name or number:

Illinois Coal Report

p.

LATER OPERATORS

Date

Operator

Name or No.

~~2 1883 Young & M^e Kinney~~

~~3 1887 Consolidated Coal Co.~~

4 1919 Gillespie Coal Co. - *New*

5 ? ~~Henderson Coal Co.~~

6 1941 Perry Coal Co.

7 1945 Little Day Coal Co.

8 1967 Florida Coal Co.

9

10

11

12

13

14

600' N 100' E of SW Corn. SW NE (1948)

*Also owners

#See ownership sheet

Railroad, Wagon, Strip, Idle, Abandoned *Shaft*

IDENTIFICATION

County No. 251

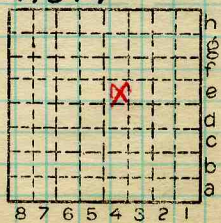
Coal No. 6

Coal Report No. ~~53~~ 53

Quad. 200 (1948)

7.6'

County Macoupin



Sec. 13

T. 8 N. ~~8~~

R. 7 W. ~~7~~

Index No. 1813 e4

COAL MINE OPERATOR



(Sheets) COAL PRODUCTION (Sheet)

No.	Period						Tons		
	Mo.	Day	Year	Mo.	Day	Year			
						1935			
						Av. Daily 1924	1	400	
						Cap.- 1926	2	000	
						1927	183	479	
						1928			
						1931	345	773	
						1932	206	612	
3	1	1	1936	12	31	1936	319	144	
3	1	1	1937	12	31	1937	273	970	
S-3	1	1	1938	12	31	1938	237	991	
						1939	193	343	
						1940	157	630	
S-3	1	1	1941	12	31	1941	113	845	
S-3			1942			1942	201	608	
						1943	300	499	
						1944	295	407	
	1	1	1945	5	31	1945	105	332	
	7	1	1945	12	31	1945	92	736	
						1946	249	498	
SUMMARIES						1947	255	459	
						1948	240	901	
No. 1918	to	No. 1935					3	989	914

#3

198,068

Railroad, Wagon, Idle, Abandoned

S-3

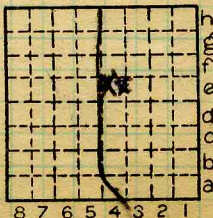
IDENTIFICATION

County No. 251 Coal No. 6

Gillespie

Quad. 200 Part 6

County Macoupin



Sec. 13

T. 8 N.

R. 7 W.

Index No. 1813 e4

COAL MINE—PRODUCTION



(Sheets) COAL PRODUCTION (Sheet)

Period						Tons	
Mo.	Day	Year	Mo.	Day	Year		
		1949				225	841
		50				107	169
		51				180	726
		52				172	242
		53				166	592
		1954				246	976
		1955				265	584
		1956				163	008
		1957				360	708
		1958				375	594
		1959				327	830
		1960				358	171
		1961				312	192
		1962				318	096
		1963				286	787
		1964				373	937
		1965				378	980
		1966				447	676
		1967				416	049
		1968				291	461

Mined to 11/68

SUMMARIES

No. to No.

Railroad, Wagon, Strip, Idle, Abandoned

IDENTIFICATION

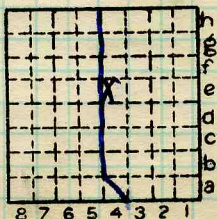
County No. 251

Coal No. 6

Coal Report No. S-3

Quad. Gillespie (200)

County Maloupin



Sec. 13

T. 8 N.

R. 7 W.

Index No.

Mine Index 843

COAL MINE—PRODUCTION

ILLINOIS GEOLOGICAL SURVEY, URBANA

1813 e 4





LOCATION AND ELEVATION

Location: **E** side **Illinois Traction** R. R.
 side R. R.
 side Highway No.

on top. map Location sheet **Map Files #9-59-29**

Elevation: Method, 1. Est. () _____ ft.
 2. Inst. (kind **PT**) _____ **663.1** ft.

By **NB591 PSM p.41-268** Data sheet

DEPTH

Authority To coal _____ ft.
 Authority Rail to rail _____ ft.
 Top of coal above rail. (Est. Rule) _____ ft.
 To coal **347** ft.

ALTITUDE OF TOP OF COAL

By estimated data _____
 By instrumental data **316** ft.

Thickness

Max. in. Min. in. Aver. **93** in.

GEOLOGICAL DATA

Mine notes, date **Very Little** _____

Coop No. Pyr. inv. Coal Ash inv.

CHEMICAL DATA

Analyses	Face	U. I.	B. M.	Others
Car		U. I.	B. M.	Others
Org. Sulf		U. I.	B. M.	Others
Ash fusion		U. I.	B. M.	Others
Ash anal.		U. I.	B. M.	Others
		U. I.	B. M.	Others

Classification

Misc. tests: Coking. Cleaning Boiler

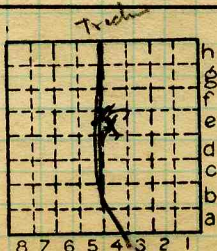
Published descriptions:—

Railroad, Wagon, Idle, Abandoned

IDENTIFICATION

County No. **251**
Gillespie
 Quad. **200**
 County **Macoupin**

Coal No. **6**
 Part **6**



Sec. **13**

T. **8** N.
 R. **7** W.
 Index No.

1813.4e

COAL MINE LOCATION AND DATA



Little Dog Coal Co.

Face channel samples (50[±]lbs. each). Collected 5-27-59 by J.A.Simon and J.A.Harrison with Elamer O'Neil, Little Dog Coal Co.

Sample #1 Location: Room 16, 13th East off 5th North.

Total coal thickness 86"
 Total thickness in sample 85"

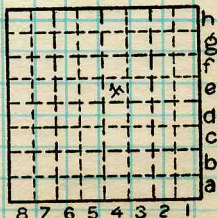
LOG OF MINERAL BANDS
 (measured from top of coal)

- 8 $\frac{1}{4}$ " - 8 $\frac{3}{4}$ " Coal, irregularly mixed and interlaminated with pyrite.
- 25 $\frac{7}{8}$ "- 26" Irregular pyrite band.
- 26 $\frac{3}{8}$ "- 26 $\frac{7}{16}$ " Irregular pyrite band up to 1/16"
- 33 $\frac{3}{4}$ "- 34" Pyrite band grades into nodules up to $\frac{3}{4}$ " thick. EXCLUDED
- 51 $\frac{7}{8}$ "- 52" Coal and pyrite thinly interlaminated.
- 52" - 53 $\frac{1}{2}$ " Coal, normally bright banded, with several thin pyritic bands.

By JAS - JAH Date 5-27-59

Quad. Gillespie (200) Part

County MACOUPIN



Sec. 13 E 4
 T. 8 N.
 R. 8
 7 W.
 Index No.





page 2 of 3

- 53 $\frac{1}{2}$ " - 53 $\frac{3}{4}$ " Irregular pyrite band with thin coaly streaks.
- 64 $\frac{1}{2}$ " - 64 $\frac{3}{4}$ " Irregular pyrite band. EXCLUDED
- 70 $\frac{1}{2}$ " - 70 $\frac{3}{4}$ " Shale, gray, variable thickness, BLUE BAND, (note: unusually thin for blue band). EXCLUDED

Sample #2 Location: 450' ± North of 18th
West in the 5th North off Main
West.

Total thickness of coal 83 $\frac{3}{4}$ "
Total thickness in sample 82"

LOG OF MINERAL BANDS
(measured from top of coal)

- 9 $\frac{3}{4}$ " - 10" Pyrite and coal thinly inter-laminated.
- 26 $\frac{1}{4}$ " - 26 $\frac{1}{2}$ " Pyrite with coaly streaks, laterally pyrite up to $\frac{1}{2}$ " thick, EXCLUDED
- 33" - 33 $\frac{5}{8}$ " Gray shale band. EXCLUDED
- at 37" Discontinous band of pyrite nodules. No nodules in sample.
- 61 $\frac{1}{2}$ " - 61 $\frac{3}{4}$ " Pyrite with coaly streaks, $\frac{1}{8}$ " to $\frac{1}{2}$ " thick laterally. EXCLUDED
- 67 $\frac{1}{4}$ " - 67 $\frac{3}{8}$ " Gray shale, BLUE BAND, (note: unusually thin for blue band.) EXCLUDED



page 3 of 3

Sample #3 Location: 420'[±] in by Room 22, 17th
West, 11th North.

Total thickness of coal 98 3/4"
Total thickness in sample 96"

LOG OF MINERAL BANDS
(measured from top of coal)

at 26 1/4" Pyrite lense 1/8" to 1/16" thick.
36 1/4" - 36 3/4" Gray shale. EXCLUDED
49 1/4" - 49 5/16" Pyrite parting.
50 1/2" - 50 7/8" Pyrite band 3/8" to 1/2" thick.
EXCLUDED
66" - 66 1/4" Pyritic band.
72 3/4" - 73 5/8" Gray shale, BLUE BAND, with
local pyritic lenses immediately
above and below. EXCLUDED
80" - 80 1/16" Pyrite parting.
95 3/4" - 96 3/4" Pyrite band. EXCLUDED



Room ~~2016~~ 16
 13th E. 5th N. — # / sample

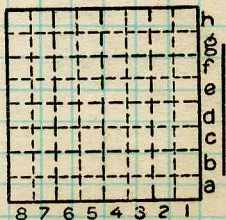
From	To	Thickness	Description
0	8 1/4	86"	Roof - Drk. Grey to Black Sh. smoothly contact with Coal - Normally bright banded
8 1/4	8 3/4		Coal - Irreg. Mixed laminated with pyrite (excluded) normally
8 3/4	2 1/4		Coal - Nn bright banded.
2 1/4	2 3/4		Coal - Dull. (See back of page) * Fossil mineralized, with ? catrite
2 3/4	2 5/8		Coal - N.B. Normally bright banded.
2 5/8	26		Irreg. Pyrite Band
26	26 3/8		Coal Irreg Coal
26 3/8	26 7/16		Irreg Pyrite up to 1/16 inch.
26 7/16	33 3/4		Coal normally bright N.B. Banded

Little Dog Mine

By JAJ - JAH. Date 5/27/79

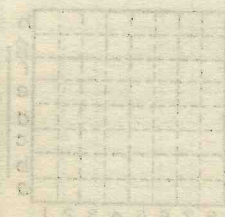
Quad. _____ Part _____

County _____



Sec. 13
 T. 8 N.
 R. 7 E.
 Index No.

This dull band is made up of
vitrinite, some banded & some non-banded,
exinite, fusinite and mineral matter.
The zone appears to have undergone
a mixing ^{action} as individual pieces ^{of coal} are randomly
oriented. Band would be classified as a
dull clavain for this description.





Page #2 of Sample #1

From To

33 3/4 - 34 Pyrite Band - grades into nodules up to 3/4" thick

~~laterally~~ laterally normally bright

34 - ~~49 7/8~~ 51 7/8 Coal ~~H.B.~~ Banded

51 7/8 - 52 Coal & Pyrite thinly interlaminated,

52 - 53 1/2 Coal ~~H.B.~~ normally bright banded with several thin pyritic bands.

53 1/2 - 53 3/4 Irreg. Pyrite band with thin coal streaks.

53 3/4 - 64 1/2 Coal normally bright ~~H.B.~~ Banded

64 1/2 - 64 3/4 Irreg. pyrite Band, (excluded)

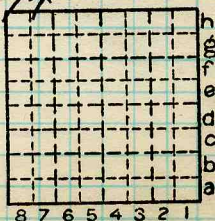
64 3/4 - 70 1/2 Coal - ~~state grey, variable~~ ~~blue band, 1/4"~~

Little Dog

By _____ Date _____

Quad. _____ Part _____

County _____



Sec. _____
 N. _____
 T. _____
 S. _____
 E. _____
 R. _____
 W. _____
 Index No. _____





Page ~~#~~ 3 of Sample #1

70 1/2 - 70 3/4 - Shale gray - variable Blue Band. (excluded)

70 3/4 - 86" - Coal - Normally Bright Banded.

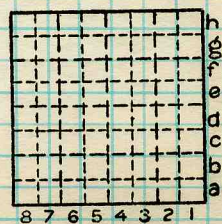
Bottom - Gray underclay

Little Dog c.c.

By _____ Date _____

Quad _____ Part _____

County _____



Sec. N. T. S. E. R. W. Index No.





~~Little Dog Mine
5th N. off Main West
1/2 mile~~

450' ~~part 18th N.~~ of 18th W.
in the 5th N. Entry off
Main W.

Sample #2

~~From To~~ Thickness 8 3/4
Root - Dark grey to black
shale.

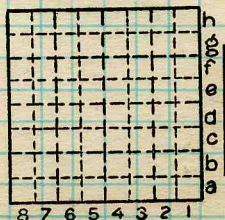
From 9 3/4 To 10" Pyrite & Coal
thinly interlam-
inated.

26 1/4 26 1/2 Pyrite with coal
streaks - Laterally
Pyrite up to 1/2"
(excluded)

Little Dog, Mine
By JAS & JAH. Date 5/27/59

Quad. Part

County



Sec. 13
T. 7 N.
R. 8 E.
Index No.

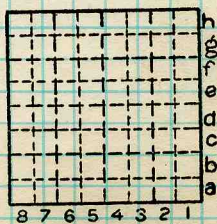


Page 2 - Sample 2 - Little Dog

From To.
 33 33 5/8 - Grey shale (excluded)
 @ 37" - Band of pyrite nodules - None in sample.
 41 1/2 61 3/4 - Pyrite with coaly streaks 1/8 to 1/2" thick laterally (excluded.)
 67 1/4 67 3/8# Grey shale (excluded)
Blue Band

1/8
 1/4
 5/8
 1/4

By _____ Date _____
 Quad. _____ Part _____
 County _____



Sec. _____
 T. N. _____
 S. _____
 E. _____
 R. W. _____
 Index No. _____



Little Dog Mine - Sample #3

420' in by Room 22, 17th West,
11th N.

Thickness 8' 2 3/4"

Roof dark gray to black shale

From To Pyrite band

@ 26 1/4" 1/8 to 1/16" thick.

1/2 36 1/4 36 3/4 Gray Shale (excluded)

49 1/4 49 5/16 Pyrite Parting

@ 50 1/2 7/8 to 1/2" Pyrite band (excluded)

66" 66 1/4" Pyrite Band

7/8 72 3/4 73 5/8 Grey Shale (excluded)
Blue Band with local
pyrite lenses immediately
above & below.

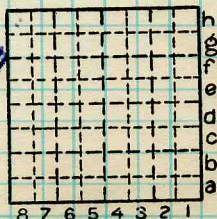
80" 80 1/6" - Pyrite Parting

95 3/4 96 1/4 - Pyrite Band (excluded)

By JAS & JAH Date 5-27-59

Quad. Part

County



Sec. 13
T. 8 N.
R. 7 E.
Index No. W.



Page 1

Little Dog Coal Company,
Gillespie, Illinois

SAMPLE # 1

Face Channel Sample (50 lbs. \pm) Coal (No. 6)
Collected by J.A. Simon & J.A. Harrison (IGS) with
Elmer O'Neil (Little Dog Coal Co.)

Sample # 1

Room 16, 13th East off 5th North

Total Coal thickness 86"

Total Sample thickness 85"

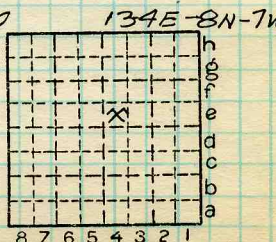
Log of Mineral Bands (measured from top of coal)
FROM TO

- 8 $\frac{1}{4}$ - 8 $\frac{3}{4}$ - Coal, irregularly mixed and interlaminated
with pyrite.
- 25 $\frac{7}{8}$ - 26 - Irregular pyrite band
- 26 $\frac{3}{8}$ - 26 $\frac{7}{16}$ - Irregular pyrite band up to $\frac{1}{16}$ "
- 33 $\frac{3}{4}$ - 34 - Pyrite band grades into nodules up to
 $\frac{3}{4}$ " thick - EXCLUDED
- 51 $\frac{7}{8}$ - 52 - Coal & pyrite thinly interlaminated
- 52 - 53 $\frac{1}{2}$ - Coal, normally bright banded, with
several thin pyrite bands
- 53 $\frac{1}{2}$ - 53 $\frac{3}{4}$ - Irregular pyrite band with thin coaly
streaks
- 64 $\frac{1}{2}$ - 64 $\frac{3}{4}$ - Irregular pyrite band
EXCLUDED

Date 5-27-59 T.8N R.7W

Quad. Gillespie (200) Part Sec. 13

County MACOUPIN Index No.





From - to

Page 2

70 $\frac{1}{2}$ - 70 $\frac{3}{4}$ - Shale, gray, variable thickness,
"Blue Band" (NOTE: Unusually
thin for "Blue Band") EXCLUDED



Little Dog Coal Company
Gillespie, Illinois

SAMPLE #2

Face Channel Sample (No. 6) Coal (50 lbs ±)
Collected by J.A. Simon & J.A. Harrison (IGS)
with Elmer O'Neil (Little Dog Coal Co)

Sample #2 - 450' ± North of 18th West in
the 5th North off Main West

TOTAL THICKNESS OF COAL 83 1/4"
TOTAL SAMPLE THICKNESS 82"

LOG OF MINERAL BANDS - (measured from top of coal)
FROM — TO

9 3/4" - 10" Pyrite & coal, thinly interlaminated

26 1/4" - 26 1/2" Pyrite with coal streaks, laterally pyrite
up to 1/2" thick EXCLUDED

33 - 33 5/8" - Gray Shale band EXCLUDED

at 37" Discontinuous band of pyrite nodules
No nodule in sample!

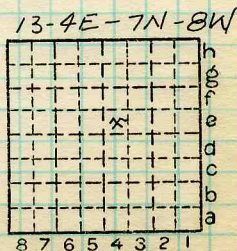
61 1/2" - 61 3/4" Pyrite with coaly streaks, 1/8" to 1/2" thick
laterally. EXCLUDED

67 1/4" - 67 3/8" - Gray Shale, "Blue Band" EXCLUDED
(NOTE: Unusually thin for blue band)

Date 5-27-59 T. 7N R. 8W

Quad. Gillespie (200) Part Section 13

County MACOUPIN Index No.





LITTLE DOG COAL COMPANY
GILLEPSIE

SAMPLE #3

Face Channel Sample Coal (No. 6) (50 lbs ±)
Collected by J. A. Simon & J. A. Harrison (IGS)
with Elmer O'Neill (Little Dog Coal Co.)

SAMPLE #3

420'± in by Room 22, 17th WEST, 11th
NORTH

Total thickness of Coal 98 3/4"

Total Sample thickness 96"

LOG OF MINERAL BANDS (measured from top of coal)

FROM TO

at 26 1/4 - Pyrite lens 1/8" - 1/16" thick

36 1/4" - 36 3/4" Gray Shale EXCLUDED

49 1/4" - 49 5/16" Pyrite Parting

50 1/2" - 50 7/8" Pyrite lens 3/8" to 1/2" thick EXCLUDED

66" - 66 1/4" Pyrite band

72 3/4" - 73 5/8" Gray Shale ("Blue Band") with local pyrite
lenses immediately above & below EXCLUDED

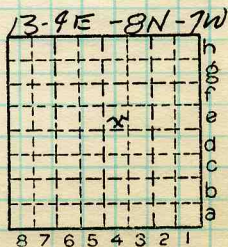
80" - 80 1/16" Pyrite Parting

95 3/4" - 96 Pyrite band EXCLUDED

Date 5-27-59 T. 8N R. 7W

Quad. Gillespie Part Sec 13

County Macoupin Index No.



ILLINOIS GEOLOGICAL SURVEY, URBANA

Strata	Thickness	Top	Bottom
<p>Sample # 1 Little Dog Coal Mine 9-5-63 Gluskoter & Baker Location: Face of 20th E entry off the 5th N, off the main W.</p>			
<p>Total thickness: 7'9"</p>			
<p>Roof: Dark gray shale (6" to 8") with Herrin (Brereton) limestone above.</p>			
<p>Bottom: Underclay</p>			
<p>Note: Face sample has been exposed for few months. Rock Dust cleaned off but coal somewhat weathered. Calcite on cleats is chalky white. <i>About 2 months</i></p>			
		From	To
<p>Coal, normally bright banded. Calcite and pyrite on vertical fractures. Several thin pyrite stringers within 2" of top. Soft fusain bands at 9", 18", 20". Pyrite and fusain zone extremely lenticular at base.</p>		0	1'9½"
<p>Coal, highly sheared, soft, friable.</p>		1'9½"	2'1"
<p>Coal, normally bright banded. Calcite and pyrite on vertical fractures. 1/8" fusain band at 2'4½"</p>		2'1"	2'9"
<p>Pyrite lense. <u>Omitted from sample.</u></p>		2'9"	2'9½"
<p>Coal, normally bright banded as above.</p>		2'9½"	3'11"
<p>Pyrite lense. <u>Omitted from sample.</u></p>		3'11"	3'11½"
<p>Coal, normally bright banded as above.</p>		3'11½"	5'3½"
<p>Pyrite zone grading laterally from thin stringers to up to 1" thick.</p>		5'3½"	5'4"
<p>Coal, normally bright banded. Calcite on vertical fractures.</p>		5'4"	5'10½"
<p>Shale, gray. Blue band. <u>Omitted.</u></p>		5'10½"	6'
<p>Coal, normally bright banded. Calcite and pyrite on vertical fractures. Several thin pyrite lenses within 4" of bottom.</p>		6'	7'7'9"
<p>Coal No. 6</p>			
<p>Geographic location</p>			
<p>1700'N, 1300'W, Sec. 11, T. 8N., R. 7W.</p>			

ILLINOIS GEOLOGICAL SURVEY, URBANA

Strata	Thickness	Top	Bottom
<p>Sample # 2 Little Dog Coal Mine 9-5-63 Gluskoter and Baker Location: 5th N, main W. Total Thickness: 7'5" Roof: 6" shale, gray. Herrin limestone (Brereton) above. Bottom: Underclay Note: Face has been exposed for 6 months. Iron sulfates forming on face (carphosiderite). Calcite is opaque. Few inches of surface removed before sampling.</p>			
<p>Coal, normally bright banded. Calcite and pyrite on vertical fractures. Fusain lense at 7" and thin pyrite stringers at 1'7 3/4" and 1' 8 1/2".</p>		From	To'
<p>Highly sheared zone. Gives brown woody appearance.</p>		0	1' 1 1/2"
<p>Coal, normally bright banded as above. Pyrite and shale band. much better developed laterally.</p>		1'8 1/2"	1'11"
<p>Coal, normally bright banded as above. Pyrite lense, <u>Omitted from sample.</u></p>		1'11"	2'8 1/2"
<p>Coal normally bright banded as above</p>		2'8 1/2"	2'8 5/8"
<p>Pyrite lense, <u>Omitted from sample.</u></p>		2'8 5/8"	3'
<p>Coal, normally bright banded.</p>		3'	3' 3/8"
<p>Pyrite lense. <u>Omitted from sample.</u></p>		3'3/8"	3'10"
<p>Coal, normally bright banded. Calcite and pyrite on vertical fractures. Occasional thin fusain lenses.</p>		3'10"	3'10 5/8"
<p>Shale. Blue band. <u>Omitted from sample.</u></p>		3'10 5/8"	6'
<p>Coal, normally bright banded. thin (many) pyrite stringers becoming more numerous near bottom.</p>		6'	6'3/4"
<p>Coal No. 6 Geologic location 5200' NS line, 1300 WE line, Sec. 11- T8N-R7W.</p>		6'3/4"	7'5"

→ Geographic

Strata	Thickness	Top	Bottom
Sample # 3 Little Dog Coal Mine 9-5-63 Gluskoter & Baker Location: 6E off 5th N. Total Thickness: 7'8½" Roof: Gray shale 26" to limestone (Herrin) Bottom: Underclay, normal.			
Coal, normally bright banded. Calcite and pyrite on vertical fractures.		From 0	To 1'5"
Coal, highly sheared		1'5"	1'8"
Coal, normally bright banded, Few Thin pyrite stringers and fusain beds.		1'8"	2'10"
Fusain pod, soft.		2'10"	2'11"
Coal, normally bright banded.		2'11"	3'2"
Shale, gray. Omitted from sample.		3'2"	3'2 ¾"
Coal, normally bright banded. With pyrite stringers at 3'3½", 3'6" and bony coal band 1/8" thick at 3'5". Thin pyrite lense at base.		3'2 ¾"	4'3"
Coal, normally bright banded, calcite and pyrite on vertical fractures. Zone of thin pyrite stringers at 5'6"		4'3"	6'1"
Pyrite and shale band. Blue Band		6'1"	6'3"
Bony Coal. <i>omitted from sample.</i>		6'3"	6'5"
Coal, normally bright banded. Calcite and pyrite on vertical fractures.		6'5"	7'8½"
Coal No. 6 Geographic location: 800'W of E. Line. 50'N of S. Sine Sec. 11, T. 8N., R. 7W.			

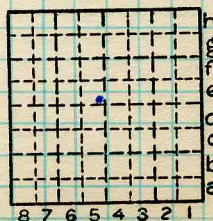
Strata	Thickness	Top	Bottom
Channel Sample # 1 9-9-63 Location: At face, main north, old workings. Roof: 1'6" of top coal left, 3' shale, then limestone. Bottom: Underclay Total Thickness: 7'4", will take bottom 5'10"			
		From	To
Coal, normally bright banded. Calcite and pyrite on vertical fracture. (altered). Fusain band at 7½", 1/8" pyrite band at 12"		0	1'10 ³ / ₄ "
Pyrite zone. Extremely lenticular, variable in thickness		1'10 ³ / ₄ "	1'11 ¹ / ₈ "
Coal, normally bright banded, Calcite on vertical fractures. 1/2 dozen pyrite stringers from 2'7" to 2'8". Same zone. includes shale band.		1'11 ¹ / ₈ "	2'8 ¹ / ₂ "
Fusain, soft.		2'8 ¹ / ₂ "	2'9"
Coal, normally bright banded. as above		2'9"	3'4 ¹ / ₂ "
Pyrite band.		3'4 ¹ / ₂ "	3'4 ⁷ / ₈ "
Coal, calcite on vertical fractures 1/8" fusain band (soft) at 3'6 3/4"		3'4 ⁷ / ₈ "	3'10 ³ / ₄ "
Gray shale, blue band. Omitted.		3'10 ³ / ₄ "	4'1 ¹ / ₄ "
Coal, normally bright banded. Calcite and pyrite on vertical fractures. Becoming harder and dirtier downward.		4'1 ¹ / ₂ "	5'10"
Coal No. 6 Location - Geographic 100'N, 2500' E of SW/c. Sec. 12, T. 8N., R.7W.			



Little Dog Mine, 18th W. off the main N. crosscut in Room 20, near center Sec. 1-8N-7W, Macoupin County, taken by KEC and KWC, 8/16/68, total thickness 7'6", Sample #1

Coal - normally bright banded pyrite lense	1/16"
Coal - normally bright banded Bony coal	0-1'3 3/4"
Coal - normally bright banded Pyrite and coal	1'3 3/4"-2'4 3/4"
Coal - normally bright banded Pyrite	2'4 3/4"-2'5"
Coal - normally bright banded Coal and pyrite	2'5"-2'6"
Coal normally bright banded Pyritic coal	2'6"-2'6 1/8"
Coal -normally bright banded Pyrite	2'6 1/8"-2'8 2/8"
Coal - normally bright banded Blue Band	2'8 2/8"-2'8 5/8"
Coal - normally bright banded Pyrite	2'8 5/8"-3'6 5/8"
Coal - normally bright banded Pyrite	3'6 5/8"-3'7 1/8"
Coal - normally bright banded Pyrite	3'7 1/8"-4'11 1/8"
Coal - normally bright banded Blue Band	4'11 1/8"-4'11 5/8"
Coal - normally bright banded Pyrite	4'11 5/8"-5'6 1/3"
Coal - normally bright banded Pyrite	5'6 1/3"-5'7 1/8"
Coal - normally bright banded Pyrite	5'7 1/8"-5'7 5/8"
Coal - normally bright banded Pyrite	5'7 5/8"-5'7 6/8"
Coal - normally bright banded Pyrite	5'7 6/8"-7'2 6/8"

By _____ Date 8/16/68
 Quad. _____ Part _____
 County MACOUPIN



Sec. 1
 T. 8
 R. 7
 Index No. _____



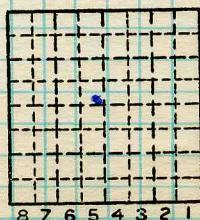
Little Dog Mine, 16th W. off the main N. entry, near cenetre
 Sec. 1-8N-7E, Macoupin County, taken by KEC and KWC,
 8/16/68, total thickness 7'8", Sample #2

Coal - normally bright banded	0-1'11"
Pyrite	1'11"-1'11 1/8"
Coal	1'11 1/8"-2'10 1/8"
Fusain	2'10 1/8"-2'10 3/8"
Coal - normally bright banded	2'10 3/8"-3'4 7/8"
Pyrite	3'4 7/8"-3'5 1/4"
Coal - normally bright banded	3'5 1/4"-3'9 1/4"
Pyrite	3'9 1/4"-3'9 5/8"
Coal - normally bright banded	3'9 5/8"-3'11 1/8"
Pyrite	3'11 1/8"-3'11 3/8"
Coal	3'11 3/8"-5'11 3/8"
Blue Band	5'11 3/8"-6'1 3/8"
Coal - normally bright banded	6'1 3/8"-7'6 1/4"

By Date 8/16/68

Quad. Part

County MACOUPIN



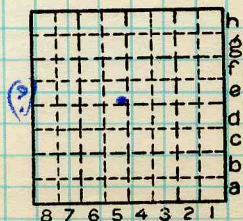
Sec. 8 N.
 T. 7 E.
 R. 7 W.
 Index No.



Little Dog Mine, 16th W. off the main NE entry, Room 23,
 near center of Sec. 1-8N-7E, Macoupin County, taken by
 KEC and KWC, 8/16/68, total thickness 7'2", Sample #3

Coal - normally bright banded	0-2'0"
Coal - dull	2-2' 1 1/2"
Coal - normally bright banded	2' 1 1/2" - 2' 4 1/2"
Pyrite	2' 4 1/2" - 2' 45/8"
Coal - normally bright banded	2' 45/8" - 2' 61/8"
Pyrite	2' 61/8" - 2' 65/16"
Coal - normally bright banded	2' 6 5/16" - 2' 7 1/16"
Pyrite	2' 7 1/16" - 2' 7 1/8"
Coal - normally bright banded	2' 7 1/8" - 3' 2"
Pyrite-	3' 2" - 3' 2 1/8"
Coal - normally bright banded	3' 2 1/8" - 3' 11 5/8"
Pyrite	3' 11 5/8" - 4' 2/8"
Coal	4' 2/8" - 5' 10 2/8"
Blue band	5' 10 2/8" - 5' 11 2/8"
Coal - normally bright banded	5' 11 2/8" - 7' 2"

By _____ Date 8/16/68
 Quad _____ Part _____
 County MACOUPIN



Sec. 1
 T. 8 N.
 R. 7 W.
 Index No.





Symbol

Description

Inches

Note:

There are several hand-drawn profiles of seam thickness and elevation on file in the ISGS Map Library.

These profiles are at a horizontal scale of $1'' = 200'$ and a vertical scale of $1'' = 4'$.

The profiles are measured along the main entries of the mine.

Catalog No. R4103.M34 i5.1-49

(Scale: 1 division = 3 inches).

Sample No.

Can No.

Lab. No.

Collector,

Coal: Survey No.

Mine,

Co.

Index No.

Q.—COAL SECTION SHEET.