



Form 180

Prarie Ce

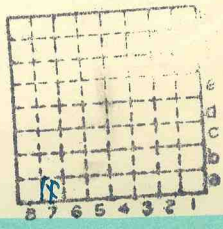
S 11

260

Mine Index 626

R -F

HERRIN



Sec.	27
T.	2 ^{N.} _{S.}
R.	8 ^{E.} _{W.}
Index No.	



Mine originally operated by: (1)

Date

opened 1904 or 1905
Original name or number:

Illinois Coal Report _____ p. _____

LATER OPERATORS

Date	Operator	Name or No.
2 1941	Prawne Coal Co	
3 1941	Prawne Coal Co	
4 1942 Jan.	Prawne Mining Corp	
:	% Wm Murdock 213 N. 34 St. Belleville	
5		
6		
7		
8		
9		
10		
11		
12		
13		
14		

*Also owners

#See ownership sheet

Abd

Railroad, Wagon, Strip, Idle, Abandoned 1942

IDENTIFICATION

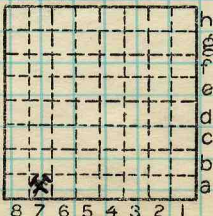
County No. 260

Coal No.

Coal Report No. S-11

Quad.

County St Clair



Sec. 27

T. 2 N. 4

R. 8 W. 4

Index No.

COAL MINE OPERATOR



(Sheets) COAL PRODUCTION (Sheet)

Period						Tons				
Mo.	Day	Year	Mo.	Day	Year					
	?				1941					3 038 L.
	?				1941					10 480 L.
1	1	1942	3	-	31 1942					16 026
					1943					sale
					1944					sale
					1945					sale

SUMMARIES

No. to No.

Railroad, Wagon, Strip, Idle, Abandoned

IDENTIFICATION

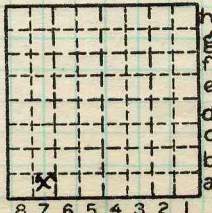
County No. 260

Coal No.

Coal Report No. S-11

Quad.

County



Sec. 27

T. 2 N.
S.
R. 8 W.
Index No.



Mine originally operated by: (1)

Date

1904

Prairie Coal Co.

Original name or number:

Illinois Coal Report

p.

Morgan

LATER OPERATORS

Date

Operator

Name or No.

2 This was a new mine - listed in the
3 1905 Coal Reports.

14 Local 1941 abnd 1942,

* Also owners

#See ownership sheet

Railroad, (Wagon), Idle, Abandoned Shaft

I.T.S. RR

IDENTIFICATION

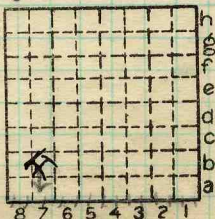
County No. 260

Coal No. 6

Quad. 226

Part 4

County St. Clair



Sec. 27

T. 2 N. S.

R. 8 W. E.

Index No.

COAL MINE OPERATOR

0327.7A



(Sheets) COAL PRODUCTION (Sheet)

NO.	Period						Tons	
	Mo.	Day	Year	Mo.	Day	Year		
11	1	1	1936	12	31	1936	145	880
11	1	1	1937	12	31	1937	128	908
S-11	1	1	1938	12	31	1938	79	944
						1939	69	726
						1940	59	804
S-11	1	1	1941	12	31	1941	13	518 (local)

SUMMARIES

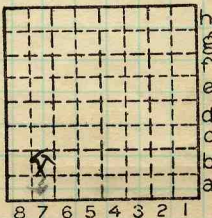
No.	to	No.	
1904		1936	4 879 042

1941

Railroad, Wagon, Idle, Abandoned

IDENTIFICATION

S-11
 County No. 260 Coal No. 6
 Quad. 226 Part 4
 County St. Clair



Sec. 27

T. 2 N.

R. 8 W.

Index No.



LOCATION AND ELEVATION

Location: N. side E. St. Louis Suburban side Highway No. R. R. R. R.

on top. map 226 Location sheet 13-87-426

Elevation: Method, 1. Est. () ft. 2. Inst. (kind Plane table) 588.1 ft.

By W. B. R 1930 Data sheet

DEPTH

Authority To coal 212 ft. Authority Rail to rail ft. Top of coal above rail. (Est. Rule) ft. To coal ft.

ALTITUDE OF TOP OF COAL

By estimated data ft. By instrumental data ft.

Thickness

Max. in. Min. in. Aver. 84 in.

GEOLOGICAL DATA

Mine notes, date 1934

Coop No. Pyr. inv. Coal Ash inv.

CHEMICAL DATA

Analyses Face IGS 5 (#626) B. M. Others Car U. I. B. M. Others Org. Sulf IGS. ✓ B. M. Others Ash fusion IGS. ✓ B. M. Others Ash anal. U. I. B. M. Others U. I. B. M. Others

Classification R. Index 125. U.C. Index 145

Misc. tests: Coking. Cleaning Boiler

Published descriptions:—

Railroad, Wagon, Idle, Abandoned

I.T.S.

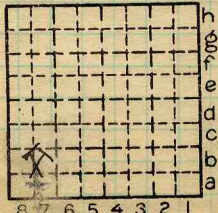
IDENTIFICATION

County No. 260

Coal No. 6

Part 4

Quad. Belleville County St. Clair



Sec. 27

T. 2 N.

R. 8 W.

Index No.

0827-7A

COAL MINE LOCATION AND DATA

Town, ~~Belleville~~ O'Fallon
 Local Authority,

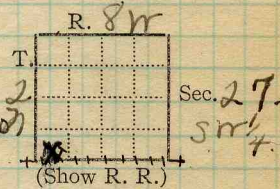
Surface alt., 588.1 ft.
 Depth to coal, 205 ft.
 Alt. top coal, 383.1 ft.
 Thickness: Av. 84 in.
 Max. in., Min. in.

Level: Auth., W.B.R. (1930)

Method, Plane table

R. R., E. St. L + S.

Location: authority, Belleville Breese Folio
 W.B.R.



Operator

Mine Name or No.

19 **Prairie Coal Co.**
 Pierre Bldg., Saint Louis, Missouri

Prairie

Successor to
 Date
 Succeeded by
 Date
 Succeeded by
 Date

PRODUCTION.

					U. S. No.
1926	2500 tons daily cap.				
1925-26	Idle (lept. of mines)				
Coal Age	"1/18/26 - Working with 50 men after shut down of 3 yrs.				
1927	- 0 -				

Geol. Notes? no Coop. No. ~~OR~~ Coal secs.? no

Analyses No.

Examined by

Ref.

Coal bed name: Local

Survey No. 6

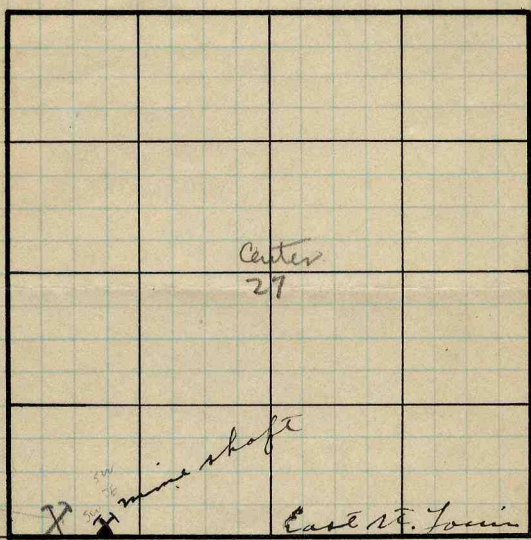
County St. Clair

Index No. 0327.10

K.—ACTIVE SHIPPING ON LOCAL COAL MINE.



R. 8. W. 3 P. M.



Belleville
Bresse
Folio

St. Clair Co.

Town - St Louis

Prairie Coal Co

Mine - Prairie

GEN'L COAL REPT.
#260

0327.7b



Operator, *Prairie Coal Co.* Date *Sept. 18, '34*
 Mine, *Prairie* Sec. *27* T. *2N* R. *8W*
 Location in mine, *Face 20th Entry off main N*
at 14th room

GRAPHIC SECTION		DESCRIPTION OF SECTION (AT POINT SAMPLED)		
In.	No.	No.	(Note character and thickness of roof)	Inches
0			Roof - Hard gray shale	
2 1/2	1	1	- Fusain parting	-
7 1/4		2	- irregular pyrite & fusain	1/8
		3	- fusain	1/4
3 (12)	2	4	- shale with 1/8 lenses of pyrite	1/2
		3	5 - pyrite lens 0-1/8"	1/8
13 1/2		6	- lens clay, fusain, pyrite	1
		7	- fusain parting	-
(24)		8	- " "	-
		4	9 - blue band (pyrite at base)	1
3 1/2		5	Floor - soft gray fire clay	
7 1/2 (36)		6		
8		7		
(48)		8		
5 1/2		9		
4 1/2			(Note character and thickness of floor)	
(60)			Total thickness of coal.	
18			Condition, <i>Moist</i> Time, hr. <i>45</i> min.	
(72)			Wt. Gross, <i>35</i> lbs. Net, lbs.	
			What Nos. shipped by Co.?	
76 ^{x x x x}			Excluded from sample: No. <i>9</i>	
			Sample represents <i>75 7/8</i> in. tons.	
			Impurities? How do they occur? <i>As partings and facings</i>	

(1 division=3 in.)

Sample No. _____ Can No. *90(1206)* Lab. No. _____
 Collector, *Ball-Hazen* Coal: Survey No. *6*
 Mine, *Prairie* Co. *St. Clair* Index No. *0327.76*



Operator, *Prairie Coal Co.* Date *Sept. 18 '34*
 Mine, *Prairie* Sec. *27* T. *2N* R. *8W*
 Location in mine, *Face main N past 26th entry*

GRAPHIC SECTION		DESCRIPTION OF SECTION (AT POINT SAMPLED)		
In.	No.	No.	(Note character and thickness of roof)	Inches
			<i>Roof - Hard gray shale</i>	
<i>9 1/2</i>		<i>1</i>	<i>1 - fusain</i>	<i>1/8</i>
		<i>2</i>	<i>2 - clay and fusain</i>	<i>1/8</i>
		<i>3</i>	<i>3 - clay lens (0-1/2)</i>	<i>1/2</i>
<i>10</i>		<i>4</i>	<i>4 - pyrite lens</i>	<i>1/8</i>
		<i>5</i>	<i>5 - shale and bone coal</i>	<i>1/4</i>
<i>5</i>		<i>6</i>	<i>6 - fusain lens (1/8-1/2)</i>	<i>1/2</i>
		<i>7</i>	<i>7 - clay lens (0-1/4)</i>	<i>1/4</i>
<i>5 3/4</i>		<i>8</i>	<i>8 - blue band</i>	<i>3/4</i>
<i>4 1/2</i>			<i>Floor - gray fire clay with Stigmataria</i>	
<i>3 1/2</i>				
<i>9</i>				
<i>3 1/2</i>				
<i>19</i>				
			(Note character and thickness of floor)	
			Total thickness of coal.	
<i>70</i>	<i>xxxxx</i>			
			Condition, <i>Moist</i> Time, hr. <i>45</i> min.	
			Wt. Gross, <i>35</i> lbs. Net, lbs.	
			What Nos. shipped by Co.?	
			Excluded from sample: No. <i>8</i>	
			Sample represents <i>69 1/4</i> <i>70</i> in. tons.	
			Impurities? How do they occur? <i>As partings and facings</i>	

(1 division=3 in.)

Sample No. _____ Can No. *91 (1207)* Lab. No. _____
 Collector, *Ball - Hazen* Coal: Survey No. *6*
 Mine, *Prairie* Co. *St. Clair* Index No. *0327.72*
 R.—COAL SAMPLE SHEET. (12759—1000—2-29)



Operator, *Prairie Coal Co.* Date *Sept. 18, '34*
 Mine, *Prairie* Sec. *27* T. *2N* R. *8W*
 Location in mine, *12th Entry off main S*
past 41st room

GRAPHIC SECTION		DESCRIPTION OF SECTION (AT POINT SAMPLED)		
In.	No.	No.	(Note character and thickness of roof)	Inches
			<i>Roof - Gray shale</i>	
<i>3 1/2</i>	<i>1</i>	<i>1</i>	<i>- Pyrite lens (0-1/4)</i>	<i>1/4</i>
<i>7</i>	<i>2</i>	<i>2</i>	<i>- Fusain parting</i>	<i>—</i>
	<i>3</i>	<i>3</i>	<i>- Clay</i>	<i>1/8</i>
<i>6 3/4</i>	<i>4</i>	<i>4</i>	<i>- Fusain parting</i>	<i>—</i>
<i>3 1/2</i>	<i>5</i>	<i>5</i>	<i>- " "</i>	<i>—</i>
<i>3</i>	<i>6</i>	<i>6</i>	<i>- Clay band</i>	<i>1/2</i>
<i>5</i>	<i>7</i>	<i>7</i>	<i>- Fusain parting</i>	<i>—</i>
<i>4 1/2</i>	<i>8</i>	<i>8</i>	<i>- " "</i>	<i>—</i>
<i>3</i>	<i>9</i>	<i>9</i>	<i>- Clay lens with 1/8 pyrite lens</i>	<i>1/4 - 1/2</i>
<i>4 3/4</i>	<i>10</i>	<i>10</i>	<i>- Fusain parting</i>	<i>—</i>
<i>5</i>	<i>11</i>	<i>11</i>	<i>- Fusain</i>	<i>1/4</i>
<i>8 3/4</i>	<i>12</i>	<i>12</i>	<i>- Clay and bony coal</i>	<i>1/4 - 3/4</i>
<i>4 1/2</i>	<i>13</i>	<i>13</i>	<i>- Irregular pyritic lens</i>	<i>1/2</i>
<i>2 1/4</i>			<i>Floor - Gray fire clay</i>	
<i>19 1/4</i>				
<i>8 3/2</i>				
			(Note character and thickness of floor)	
			Total thickness of coal.	
			Condition, <i>Moist</i> Time, hr. <i>45</i> min.	
			Wt. Gross, <i>35</i> lbs. Net, lbs.	
			What Nos. shipped by Co.?	
			Excluded from sample: No. <i>12, 13</i>	
			Sample represents <i>82 1/4 83 1/2</i> in. tons.	
			Impurities? How do they occur? <i>As partings and facings</i>	

(1 division = 3 in.)

Sample No. _____ Can No. *86(1209)* Lab. No. _____

Collector, *Ball-Hazen* Coal: Survey No. *6*

Mine, *Prairie* Co. *St. Clair* Index No. *032776*

R.—COAL SAMPLE SHEET. (12759—1000—2-29) 7