



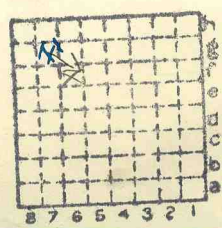
Form 180

Summerfield cc
(Ground Rod cc)

R. F

HERRIN

3



Sec.	27
T.	2 ^{N.}
R.	6 ^{W.}
Index No.	

Mine Index 3593



LOCATION AND ELEVATION

Location: side R. R.
 side R. R.
 side Highway No.

on top. map Folio 195 Location sheet 13-87-426

Elevation: Method, 1. Est. () ft.

2. Inst. (kind Plane table) 459.3 ft.

By W.B.R (1930) Data sheet

DEPTH

Authority Log To coal 279 ft.
 Authority Rail to rail _____ ft.
 Top of coal above rail. (Est. Rule) _____ ft.
 To coal 180.3 ft.

ALTITUDE OF TOP OF COAL

By estimated data _____ ft.
 By instrumental data _____ ft.

Thickness

Max. in. Min. in. Aver. 48 in.

GEOLOGICAL DATA

Mine notes, date _____

Coop No. Pyr. inv. Coal Ash inv.

CHEMICAL DATA

Analyses Face	U. I.	B. M.	Others
Car	U. I.	B. M.	Others
Org. Sulf	U. I.	B. M.	Others
Ash fusion	U. I.	B. M.	Others
Ash anal.	U. I.	B. M.	Others
	U. I.	B. M.	Others

Classification

Misc. tests: Coking. Cleaning Boiler

Published descriptions:—

Railroad, Wagon, Idle, Abandoned

B1.0. x SW

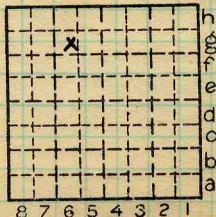
IDENTIFICATION

County No. 3

Coal No. 6

Part 6

Quad. Belleville
 County ST CLAIR



Sec. 27
 T. 2 N.
 R. 6 W.
 Index No.

0127 69

COAL MINE LOCATION AND DATA

Abd