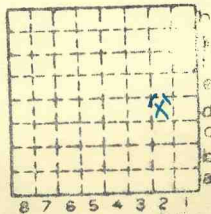


Peabody 26

430

Mi. # 157  
174



Sec. 25

T.	8	N.
		S.
R.	2	E.
		W.

Index No.

✓

Mine originally operated by: (1)

Date

1901

New Virginia C. C.

Original name or number: #1

Illinois Coal Report p.

LATER OPERATORS

Date	Operator	Name or No.
2 1907	Consumers C C	#1
3 1910	Bq. Muddy Fuel Co. (or Coal Co)	#1 or New Va.
4		
5 1928	Peabody C C	# 26
6		
7		
8		
9		
10		
11		
12		
13		
14		

\*Also owners

#See ownership sheet

Railroad, Wagon, Strip, Idle, Abandoned

IDENTIFICATION

County No. 430

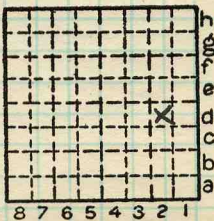
Coal No.

Coal Report No. \_\_\_\_\_

6

Quad.

County Williamson



Sec. 25

T. 8 N. S.

R. 2 E. W.

Index No.

COAL MINE OPERATOR

0325 D2



Mine originally operated by: (1) **Big Muddy Fuel Co.**

Date  
**1910**

Original name or number: **New Virginia**  
Illinois Coal Report **p.**

**LATER OPERATORS**

Date	Operator	Name or No.
2 <b>1910</b>	<b>Consumers Coal Co.</b>	
3 <b>1917</b>	<b>Public Service Corp</b>	
4 <b>1917</b>	<b>Peabody Coal Company</b>	<b>#26</b>
5		
6		
7		
8		
9		
10		
11		
12		
13		
14		

\* Also owners #See ownership sheet

Railroad, Wagon, Idle, Abandoned

*before 1936*

**C&E I.C.**

**SHIPPING MINE**

**IDENTIFICATION**

County No. **430**

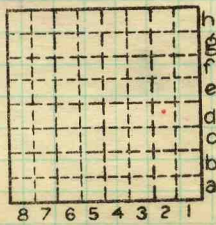
Coal No. **6**



Part

Quad. **W. Frankfort**

County **Williamson**



Sec. **25**

T. **8** N. S.

R. **2** E. W.

Index No.

**0325 d2**

**COAL MINE OPERATOR**

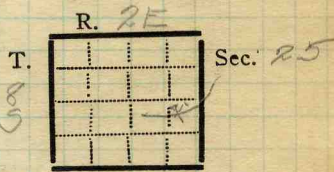


Town, *Johnston City*  
 Local Authority, *Virgil Hurd Asst M. Mgr*  
 Level: Auth.,

Surface alt., *420* ft.  
 Depth to coal, *119* ft.  
 Alt. top coal, *301* ft.  
 Thickness: Av. *96* in.  
 Max. *112* in., Min. *108* in.

Method, *Topog map*

R. R., *T.C., C.R.E.T.*



Location: authority, *Mine map*

(Show R. R.)

Operator

Mine Name or No.

1921 *Big Muddy Co*

*No. 26*

Successor to *Peabody operating Managers #26*  
 Date

Succeeded by  
 Date

Succeeded by  
 Date

**PRODUCTION.**

							U. S. No.
19			<i>2000 ton daily</i>				

Geol. Notes? *Yes* Coop. No.

Coal secs? *3*

Analyses No. *10632, 10658, 80598-9-600*

Examined by *Natzband*

Ref. *Loose leaf*

Coal bed name: Local

Survey No. *6*

County *Williamson*

Index No. *032574*

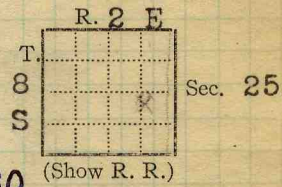
K.-ACTIVE SHIPPING OR LOCAL COAL MINE.

*duplicate*

Town, *Johnson City*  
Local Authority, *White Ash*  
Level: Auth., *Roe. P. table 1932*  
*Cady; NB88-p29*  
Method, *H. L.*

423.7<sup>✓</sup>  
Surface alt., *423* ft.  
Depth to coal, *118* ft.  
Alt. top coal, *306* ft.  
Thickness: Av. *108 96* in.  
Max. *108* in., Min. *72* in.

R. R., *C&E.I. IC.*  
Location: authority, *Cady top map*



Operator *GEN'L COAL REPT. #430* Mine Name or No.

19 10 Big *Muddy Fuel Co* *New Richmond Coal Co. New Virginia*

Successor to *Consumers Coal Co*  
Date *1910*  
Succeeded by *Public Service Corp. of Chicago.*  
Date *Coal Age July 7 1917*  
Succeeded by *Peabody Coal Co. #26* (agents of *Big Muddy*  
Date *'17* Letter from *P. Coal Co. of Fuel Co. of*  
*1615 Mc Cormick Bldg. Chicago.* #26.

				Fiscal	U. S. No.
19 15				177 425	903
1927	248	895			Q <sup>✓</sup>
1928					
		<i>abd</i>			
					<i>1930 #16</i>

Geol. Notes? *Brief* Coop. No. *#157* Coal secs.?  
Analyses No.

Examined by \_\_\_\_\_ Ref.  
Coal bed name: Local *#* Survey No. *6*  
County *Williamson* Index No. *0325*

K.—~~ACTIVE~~ SHIPPING OR LOCAL COAL MINE. *X*



( Sheets )

COAL PRODUCTION

( Sheet )

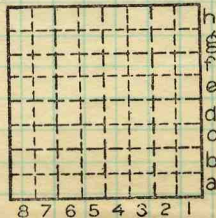
Period						Tons					
Mo.	Day	Year	Mo.	Day	Year						
					1915					177	425
					27					248	895

SUMMARIES										
No.	to	No.								
		1900-1930				5	922	571		

Railroad, Wagon, Idle, Abandoned  
IDENTIFICATION

County No. 430 Coal No.

Quad. Part  
County W. Frankfort  
Williamson



Sec. 25

T. 8 S.

R. 3 E.  
W.

Index No.

0325 d2



LOCATION AND ELEVATION

Location: side R. R.
side R. R.
side Highway No.

on top. map Location sheet

Elevation: Method, 1. Est. ( ) ft.
By W.B.R. (1932) Plane Table 423.7 ft.
Data sheet

DEPTH

Authority To coal ft.
Authority Rail to rail ft.
Top of coal above rail. (Est. Rule) ft.
To coal 118 ft.

ALTITUDE OF TOP OF COAL

By estimated data ft.
By instrumental data 306 ft.

Thickness

Max. 108 in. Min. 72 in. Aver. 96 in.

GEOLOGICAL DATA

Mine notes, date
Coop No. 157 Pyr. inv. Coal Ash inv.

CHEMICAL DATA

Analyses Face U. I. B. M. 10632 Others
Car U. I. B. M. 10658 Others
Org. Sulf U. I. B. M. 80598-9 Others
Ash fusion U. I. B. M. 600 Others
Ash anal. U. I. B. M. Others
U. I. B. M. Others

Classification

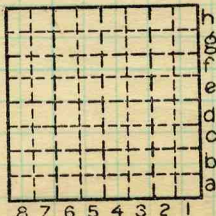
Misc. tests: Coking. Cleaning Boiler

Published descriptions:—

Railroad, Wagon, Idle, Abandoned

IDENTIFICATION

County No. 430 Coal No. 6
Quad. W. Frankfort
County Williamson Part



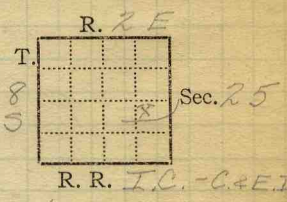
Sec. 25

T. 8 S.
R. 2 E.

Index No. 0325 d2

COAL MINE LOCATION AND DATA

Mine Name or No., # 26  
2 mile S from Johnston City  
Operator, 1981 Big Muddy Co.  
(Peabody #26)  
Operator, 191



Entrance, shaft Elev., 420 ft. above, sea level  
Depth to bottom coal, 119 ft. below, Alt. 301

SURFACE DATA.

- A. Topography, Fairly flat See
- B. Surficial materials. (1) Character, Till
- (2) Thickness, No information (3) Effect on mining and shaft-sinking, of former drainage lines, underground water strata, etc. No information.

Quade Gives depth of shaft as 125'6"

- C. Outcrops, (1) Character, See
- (2) Structure, See
- (3) Fossil horizons, See
- Collection No.,
- (4) Evidences of subsidence, See
- D. Note collection of mine maps, drill records and shaft logs.  
Edwin Bolger, Res. Engr. Marion

See drill record sheet,

E. Notes on surrounding area,

See

Coal bed name: Local, Survey No. 6

Collector, Netzeband

Mine, Big Muddy #26 Co. Williamson Index No. 032574

L.—SURFACE SHEET (Geol.)



F. Thickness of rock above bed worked, *No information*

(1) Important variations,

See

G. Note presence of strata having important effect on mining,

*Grey roof shale.*

See XI

(1) Position, *Above coal*

(2) Character, *Massive grey shale.*

(3) Persistence, *All over mine*

(4) Other workable coal beds, *None rept'd*

See

H. Cap rock, *Limestone*

(1) Thickness, *Not known*

(2) Height above coal, *2" to 8'*

See XI

I. Immediate roof, *Grey shale*

(1) Thickness, *2" to 8'* (2) Contact with coal,

(3) Horizontal variation,

See XI

J. Draw slate. (1) Thickness, (2) Contacts

*The grey shale draws where thin*

(3) Persistence, *Draws in N.E. where*

*it ranges in thickness from 2" to 36"*

K. Coal bed: Max. *108* Min. *72* Av. *96* inches

(1) Benches, *Two*

(a) Position, *Above & below B.B.*

(b) Persistence, *Thruout mine.*

See

(2) Bedded impurities, kind, position in benches, persistence, ease of separation.

*Charcoal partings (1/8 to 1/2") blueband shale (up to 2") breaks clean from coal.*

SECTION				
Ft.	In.	Name	Index	Sym.
		Limestone	?	
	8+	Shale		
	8	Coal		
	4	Floor clay		
	?	Limestone		
			X 2, 3	
			1 Dir = 4'	

Collector, *Netzeband*

Mine, *Big Muddy #26* Co. *Williamson*

Coal: Survey No. *6*

Index No. *0325.74*

## K. (5) Physical character of coal in benches,

(a) Relative hardness, *Same as rest of Williamson Co.*(b) Lustre, *Upper 6" below top coal, glance - rest bright with*(c) Fracture, *Hackly* | *some glance*(d) Texture, *Laminated.* See

## (6) Impurities in coal, other than bedded,

(a) Kind, *Pyrite lenses & stringers, calcite & gypsum*(b) Position and persistence, *fracture fillings*(c) Rejected, *Lenses over 1/2"* Ease of separation, SeeL. Floor: (1) Material, *Floor clay* *15. below.*(2) Thickness, *2" to 48"*

(3) Variation,

(4) Note character, condition, tendency to heave, relation to undercutting commercial value. *Hard, brittle, dark grey shale with**many black fragments of plant remains; heaves where thick if rooms are cut too wide & it becomes wet; as a general rule the roof breaks and relieves the strain; used to undercut upon; value unknown.*See(5) Clay sample No. Location,

## M. Stratigraphy,

(1) Fossiliferous horizons underground, *Roof & floor shale.**fragments of plant remains.*

Collection No.

Location,

## N. Notes on effect of deep drilling in coal mine areas.

SeeCollector, *Netzeband*Coal: Survey No. *6* Mine, *Big Muddy #26* Co. *Williamson*

Index No.

*0325.74*

G The roof over <sup>parts of</sup> the mine is a hard, dark grey shale. ~~with many thin lenses~~  
In some places, especially the N.E. the shale is thin (2" to 36") and draws with the coal. This leaves a limestone roof. In other places falls of 8' have shown the limestone, while in still other places falls of 10' or more have failed to show the ls.

• Wherever possible 1' to 2' of coal is left as a roof.

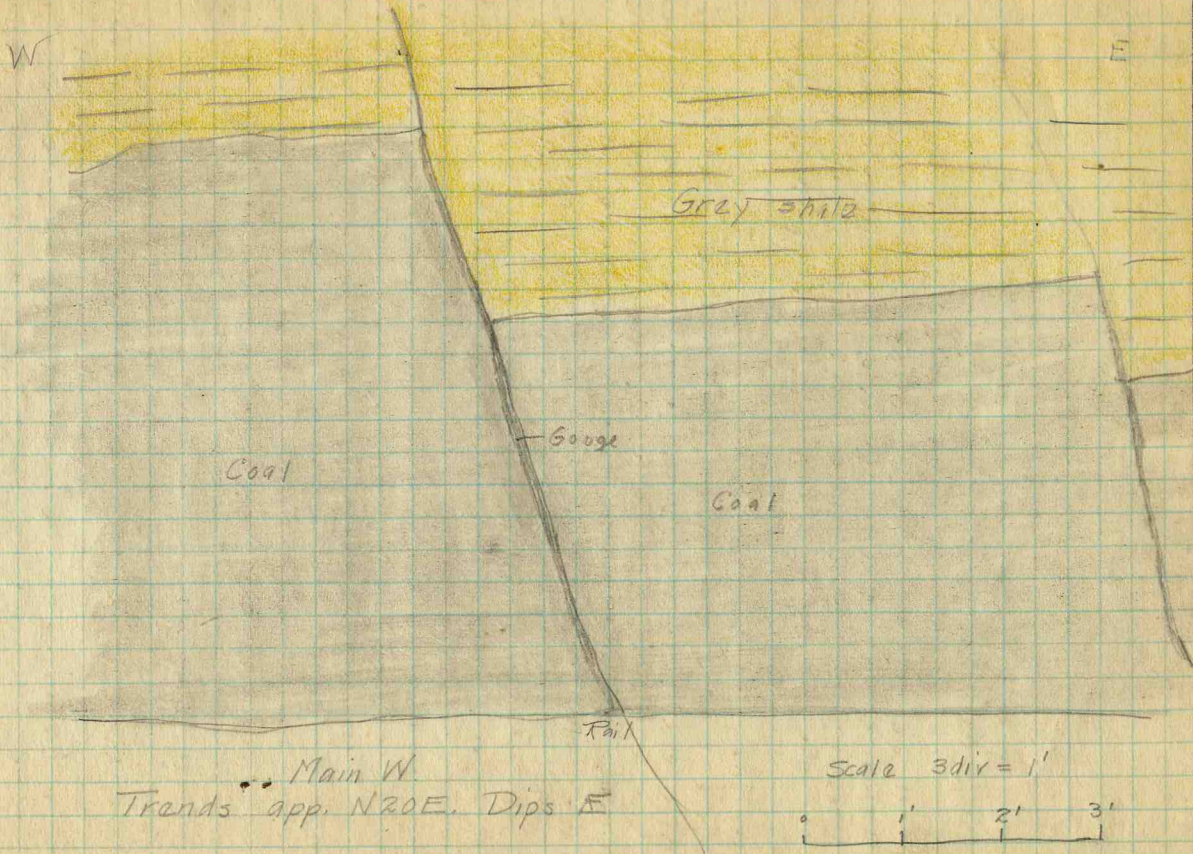
I<sub>3</sub> In many parts of the mine the roof is a light grey, soft shale. This shale seems to lens in between the coal and the black shale. It could not be determined whether the coal dipped down to permit the light shale to come in or whether the dark shale went up. The surface of the coal is very irregular and from this it might be inferred that the irregularities of the upper surface of the coal allows for the deposition of white shale lenses before the black or dark grey shale was laid down.

H In rooms 8 to 19 off the Main W. the roof is a limestone and the coal is apparently burnt to the limestone. No thin clay or shale layer could be found between coal & roof rock. The rock, however, was not broken thru in any place so that a careful examination could be made. The miners called it limestone because of its exceeding hardness.



(36713-500-7-20)

INDEX



Collector *Netzeband*  
 X-2  
 EXTRA NO. 2  
 Index No. 03257A  
 County *Williamson*

K<sub>3</sub>

There are many slips in the roof which allow much water to come into the mine. It is not known whether or not this is surface water.

These slips also necessitate extra timbering in many places.

There is a roll about 50' long coming 2' into the coal 1200' S and 2000' W of the bottom in the 4<sup>th</sup> W. The coal is full thickness.

Operator, *Big Muddy Co.* Date *July 20, 1921*  
 Mine, *No. 26* Sec. *25* T. *8S* R. *2E*  
 Located, *2 S* miles from *Johnson City*  
 Location in mine, *Face of 3rd E off 5th S off 4th W.*

GRAPHIC SECTION		DESCRIPTION OF SECTION (AT POINT SAMPLED)	
In.	No.	No. (Note character and thickness of roof)	Inches
		<i>Light Gray Shale</i>	
		<i>1 Coal Roof 18"</i>	
		<i>2 Coal (CaCO<sub>3</sub> &amp; FeS<sub>2</sub> stringers)</i>	<i>7 1/4</i>
		<i>3 Charcoal</i>	<i>1/8</i>
		<i>4 Coal</i>	<i>16</i>
		<i>5 Charcoal</i>	<i>1/8</i>
		<i>6 Coal</i>	<i>17 1/2</i>
		<i>7 Charcoal &amp; Pyrite</i>	<i>3/8</i>
		<i>8 Coal</i>	<i>7 3/8</i>
		<i>9 Pyrite</i>	<i>14 1/2</i>
		<i>10 Coal</i>	<i>1</i>
		<i>11 B.B. Shale &amp; Pyrite</i>	<i>15 1/2</i>
		<i>12 Coal</i>	
		<i>Tape 80"</i>	<i>79 6/8</i>
		<i>Floor Clay</i>	
		(Note character and thickness of floor)	
		Total thickness of coal.	<i>98</i>
		Condition, <i>Damp</i> Time, <i>9:30</i> hr. <i>30</i> min.	
		Wt. Gross, <i>20</i> lbs. Net, <i>4</i> lbs.	
		What Nos. shipped by Co.?	
		Excluded from sample: No. <i>1, 9, 11</i>	
		Sample represents <i>68 5/8</i> in. tons.	
		Impurities? How do they occur?	

*Sack 1*

Sample No. *W-21-63* Can No. *97,874* Lab. No. *80598*

Collector, *Monroe* Coal: Survey No. *6*

Mine, *Big Muddy #26* Co. *Williamson* Index No. *03 25 74*

Operator, *Big Muddy Co.* Date *July 20, 1921*  
 Mine, *No 26* Sec. *25 T. 88 R. 2E*  
 Located, *2 S* miles from *Johnson City*  
 Location in mine, *Face of Main West*

GRAPHIC SECTION		DESCRIPTION OF SECTION (AT POINT SAMPLED)		
In.	No.	No.	(Note character and thickness of roof)	Inches
			<i>Gray Shale</i>	
		<i>1</i>	<i>Coal Roof</i> <span style="float: right;"><i>24"</i></span>	
		<i>2</i>	<i>Coal</i>	<i>8</i>
		<i>3</i>	<i>Charcoal</i>	<i>1/4</i>
		<i>4</i>	<i>Coal</i>	<i>6 1/4</i>
		<i>5</i>	<i>Charcoal</i>	<i>1/2</i>
		<i>6</i>	<i>Coal</i>	<i>11 3/4</i>
		<i>7</i>	<i>Charcoal</i>	<i>3/8</i>
		<i>8</i>	<i>Coal</i>	<i>7 3/4</i>
		<i>9</i>	<i>Charcoal</i>	<i>1/4</i>
		<i>10</i>	<i>Coal</i>	<i>20</i>
		<i>11</i>	<i>B.I.</i>	<i>1 3/4</i>
		<i>12</i>	<i>Coal</i>	<i>9</i>
		<i>13</i>	<i>Charcoal, Pyrite &amp; Coal</i>	<i>1</i>
		<i>14</i>	<i>Coal</i>	<i>9</i>
			<i>Tape 75 1/4"</i>	<i>75 7/8</i>
(Note character and thickness of floor)				
Total thickness of coal.				<i>100</i>
Condition, <i>Dry</i>		Time, <i>10:40</i> hr. <i>40</i> min.		
Wt. Gross, <i>25</i> lbs.		Net, <i>4</i> lbs.		
What Nos. shipped by Co.?				
Excluded from sample: No. <i>1, 11</i>				
Sample represents <i>74 1/4</i> in.				tons.
Impurities? How do they occur?				

*Sack 2*

Sample No. *W-21-64* Can No. *97877* Lab. No. *80599*  
 Collector, *Monroe* Coal: Survey No. *6*  
 Mine, *Big Muddy #26* Co. *Williamson* Index No. *1325.74*  
 R.—COAL SAMPLE SHEET.

Operator, *Big Muddy Co.*

Date *July 20, 1921*

Mine, *No. 26*

Sec. *25* T. *8 S* R. *2 E*

Located, *2 8* miles from *Johnson City*

Location in mine, *Face of 9th N. off the Main W.*

GRAPHIC SECTION		DESCRIPTION OF SECTION (AT POINT SAMPLED)		
In.	No.	No.	(Note character and thickness of roof)	Inches
			<i>Light Gray Shale</i>	
		<i>1.</i>	<i>Coal 1" Roof 30"</i>	
		<i>2.</i>	<i>Shale Parting 1/4"</i>	
		<i>3.</i>	<i>Coal</i>	<i>12 1/2"</i>
		<i>4.</i>	<i>Charcoal</i>	<i>1/4"</i>
		<i>5.</i>	<i>Coal</i>	<i>22 3/4"</i>
		<i>6.</i>	<i>Charcoal</i>	<i>1"</i>
		<i>7.</i>	<i>Coal (CaCO<sub>3</sub> &amp; FeS<sub>2</sub> stringers)</i>	<i>45 1/4"</i>
		<i>8.</i>	<i>Tape 80 1/2"</i>	<i>81 1/4"</i>
(Note character and thickness of floor)				
Total thickness of coal.				<i>110 1/2"</i>
Condition, <i>Damp</i>		Time, <i>1</i> hr. <i>35</i> min.		
Wt. Gross, <i>25</i> lbs.		-Net, <i>4</i> lbs.		
What Nos. shipped by Co.?				
Excluded from sample: No. <i>62</i>				
Sample represents <i>80 1/4</i> in. tons.				
Impurities? How do they occur?				

*Sheet 4*

Sample No. *W-21-65* Can No. *97,868* Lab. No. *80600*

Collector, *Morrice* Coal: Survey No. *6*

Mine, *Big Muddy #26* Co. *Williams* Index No. *0325.74*





Location and Elevation Data

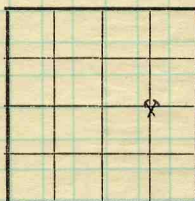
Location: Exact  Approximate  
(Approximate only if no trace or record of original exists)

Location by W.B. Roe  
Date August 2, 1932 Notebook No. 614 Page 27(2220)  
Looseleaf ref. \_\_\_\_\_  
Map files No. 14-100-45

Description of location

Position in sec., 1/4 sec., 40 acres

\_\_\_\_\_ feet from North line  
1300 feet from East line  
2540 feet from South line  
\_\_\_\_\_ feet from West line



Sec. 25

T.	8	S.
R.	2	E.

Other description: \_\_\_\_\_

Farm \_\_\_\_\_

No. \_\_\_\_\_

Company \_\_\_\_\_

Peabody Coal Co.

No. 26- New Virginia mine

County No. 18

Elevation 423.7 ft.

By W.B. Roe

Method: Level, transit, alidade, hand level

Plane table and alidade

Elevation of Ground

Height of point above ground \_\_\_\_\_

Date August 2, 1932 Notebook 614 P. 27(2220)

Looseleaf ref. \_\_\_\_\_

Map files No. 14-100-45

Description of item: (drill hole, mine, etc.) Air shaft - abandoned shipping mine

**SHIPPING MINE**

County Williamson

Quadrangle

W. Frankfort

Index No.

0325.2d