

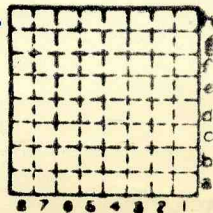


Form 180

Ind. + Ill. Coal Corp., #12

Mi. #196

Co. #156



Sec. 6

T.	9	N.
R.	2	W.

Index No.





Mine ~~originally~~ operated by: (1) **MONTGOMERY COAL CO**
Date **1898 COAL REPORT PAISLEY**

Original name or number:
Illinois Coal Report p.

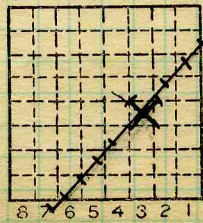
LATER OPERATORS		
Date	Operator	Name or No.
2	1905 DERING COAL CO	25
3	1906 BURNWELL COAL CO.	1
4	1913 PEABODY COAL CO	12
5	1915 ABANDONED	
6	1917 C. & E. I Reopened	12
7	1919 ILL. COAL PROPERTIES	12
8	1920 IND. & ILL. COAL CORP.	12
9		
10		
11		
12		
13		
14		

* Also owners # See ownership sheet

Railroad, Wagon, Idle, Abandoned
SHIPPING MINE

IDENTIFICATION

County No. **156** Coal No.
Quad. **202** Part
County **MONTGOMERY**



Sec. **6**
T. **9** N.
R. **2** W.
Index No.

COAL MINE OPERATOR

1306.3d



(Sheets) COAL PRODUCTION (Sheet)

Period						Tons
Mo.	Day	Year	Mo.	Day	Year	
					1927	0
					1928 (Idle)	

SUMMARIES

No.	to	No.

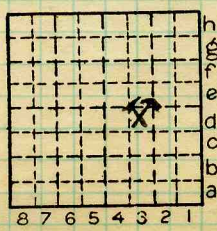
Railroad, Wagon, Idle, Abandoned

IDENTIFICATION

County No. 156 Coal No.

Quad. 202 Part

County Montgomery



Sec. 6

T. 9 N.

R. 2 E.

Index No.



LOCATION AND ELEVATION

Location: side C.C.C. + St. L. ; C. & E. I. R. R.
 side R. R.
 side Highway No.

on top. map Location sheet

Elevation: Method, 1. Est. () _____ ft.
 2. Inst. (kind _____) 665.5 ft.

By Fchs Data sheet
 DEPTH
 Authority To coal _____ ft.
 Authority Rail to rail _____ ft.
 Top of coal above rail. (Est. Rule) _____ ft.
 To coal 541 ft.

ALTITUDE OF TOP OF COAL

By estimated data _____
 By instrumental data 124.5 ft.

Thickness
 Max. in. Min. in. Aver. 96 in.

GEOLOGICAL DATA

Mine notes, date _____

 Coop No. 196 Pyr. inv. Coal Ash inv.

CHEMICAL DATA

Analyses Face	U. I.	B. M. <u>81089-90-91-92</u>	Others
Car	U. I.	B. M.	Others
Org. Sulf	U. I.	B. M.	Others
Ash fusion	U. I.	B. M.	Others
Ash anal.	U. I.	B. M.	Others
	U. I.	B. M.	Others

Classification

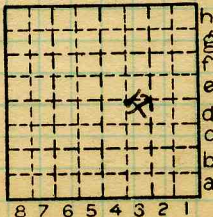
Misc. tests: Coking. Cleaning Boiler

Published descriptions:—

Railroad, Wagon, Idle, Abandoned

IDENTIFICATION

County No. 156 Coal No.
 Quad. 202 Part
 County

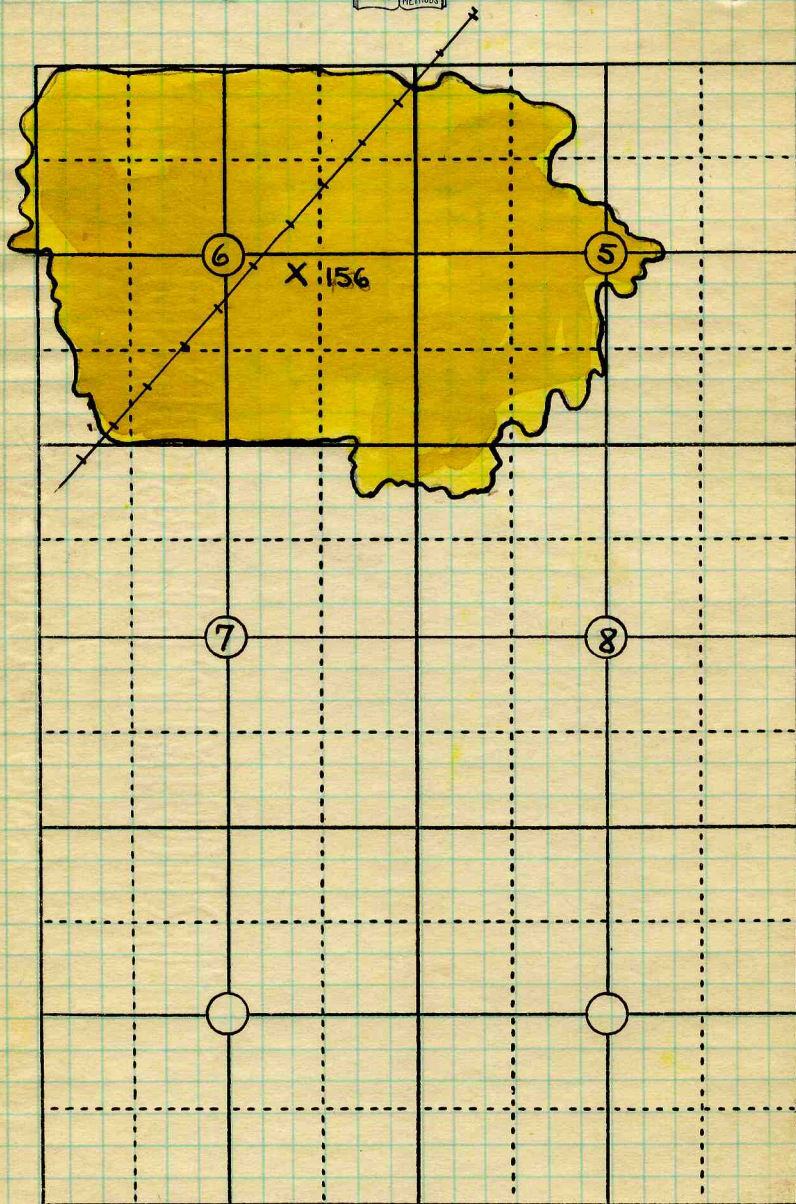


Sec. 6
 T. 9 N.
 R. 2 W.
 Index No.

Montgomery

COAL MINE LOCATION AND DATA

1306.3d



T9N R2W.

Date ^{Map.} 6-23-23

Operator Ind. & Ill. Coal Co.

Name or No. 12

County Montgomery

Index No. 1306.



STATE GEOLOGICAL SURVEY.

with

Montgomery

COUNTY

Mine Location

TOWNSHIP

9

RANGE

2

6	5	4	3	2	1
7	8	9	10	11	12
18	17	16	15	14	13
19	20	21	22	23	24
30	29	28	27	26	25
31	32	33	34	35	36

New Peabody # 12



Operator *Burnwell Coal Co.*
 Office address *McCormick Bld. Chicago*
 Mine name or number *# 1*
 Surface at mine is *665.5* feet above sea level or about _____ feet (above) (below) railroad station at _____
 Depth to bottom of coal is *549.36* feet
 Average thickness of coal is *.8* feet *0* inches

Kindly note changes in name and address.



COAL MINE NOTES.

COUNTY *Montgomery* TOWN *Witt.*
T. *9N* R. *2W*
OPERATOR *Burnwell Coal Co.*
OFFICE *Old Colony Bldg. Chicago.*
MINE *#24*

MAP No. *1306*
S. *6NW1/4 SE1/4*

TIPPLE
ENGINES
BOILERS
DRUM
SHAFT CAGE
HAULAGE
CARS
VENTILATION

DRAINAGE
SPRINKLING
WORKING SYSTEM
MINING METHODS

SIZE OF ENTRIES—MAIN	CROSS	ROOM	NECK
SIZE OF PILLARS—MAIN	CROSS	ROOM	
SHAFT	CHAIN	BARRIER	
AMOUNT OF TIMBERING		SIZE	
PROPORTION OF COAL UTILIZED			
AMOUNT AND CHARACTER OF WASTE			
ACREAGE OF COAL MINED			
ACREAGE OF COAL REMAINING			
PROPORTION OF MINE RUN AND SCREENED COAL			
METHOD OF SIZING			RESCREENED
SIZES			
PER CENT			
PROPORTION AND SIZE OF WASHED COAL			
DAILY OUTPUT			
UTILIZATION			
MARKETS			
FREIGHT RATES			
SELLING PRICES AT MINE			
COAL LAND OWNED	LEASED		HELD IN FEE
COST OF LAND OWNED	LEASED		HELD IN FEE
ADDITIONAL NOTES			

1306



COAL MINE NOTES.
CONTINUED.

OPERATOR *Burnwell Coal Co.* MINE # *24.*
 ENTRANCE *Shaft.* NAME OF COAL BED # *6*
 ELEVATION *665.50* THICKNESS OF COAL *96"*
 DEPTH TO FLOOR *549.4* MAX. MIN. AV.
 ALTITUDE OF COAL *1167 1241*
 LOCATION OF SECTION

No. SECTION.

No.	SECTION.	In.
1		
2		
3		
4		
5		
6		
7		
8		
9		
10		
11		
12		
Tape		Total

SAMPLE No.
CAN No.
CONDITION
GROSS WEIGHT
TIME EXPOSED
NOT SHIPPED
NOT INCLUDED

SECTION

Feet

PHYSICAL PROPERTIES BY NUMBERS

ROOF
FLOOR
DIP
FAULTS, ETC.
GAS

COLLECTOR

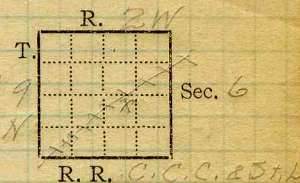
REFERENCE

DATE

1306



Mine Name or No., *No. 12.*
In mile from *Witt*
 Operator, 19*11* *Indiana & Illinois Coal Corp*
 Operator, 191



Entrance, *shaft* Elev., ft. { above,
 Depth to **bottom** coal, *568* ft. Alt.

SURFACE DATA.

- A. Topography, *Fairly flat.* See
 B. Surficial materials. (1) Character, *Till & clay*
 (2) Thickness, *No information* (3) Effect on mining and shaft-sinking, of former drainage lines, underground water strata, etc. *No information*

- C. Outcrops, (1) Character, See
 (2) Structure, See
 (3) Fossil horizons, See
 Collection No.,
 (4) Evidences of subsidence, See
 D. Note collection of mine maps, drill records and shaft logs.

See drill record sheet,

E. Notes on surrounding area,

See

Coal bed name: Local, Survey No. *6*
 Collector, *Netzeband*
 Mine, *Ind & Ill Corp # 12* Co. *Montgomery* Index No. *1306:74*
 L.—SURFACE SHEET (Geol.)



F. Thickness of rock above bed worked, *No information*

(1) Important variations, See

G. Note presence of strata having important effect on mining,

Black shale above coal comes down See XI

- (1) Position, *Above coal*
- (2) Character, *Black, bedded to massive*
- (3) Persistence, *All over mine.*
- (4) Other workable coal beds, *No information* See

H. Cap rock, *Limestone*

- (1) Thickness, *No information.*
- (2) Height above coal, *4" to 60"* See XI

I. Immediate roof, *Black shale*

- (1) Thickness, *4" to 60"* (2) Contact with coal,
- (3) Horizontal variation, *Varies from well bedded to massive.* See XI

J. Draw slate. (1) Thickness, *None.* (2) Contacts

(3) Persistence,

K. Coal bed: Max. *96* Min. *84* Av. *93* inches

- (1) Benches, *Two.*
 - (a) Position, *Above & below B.B.*
 - (b) Persistence, *Thruout mine.* See

(2) Bedded impurities, kind, position in benches, persistence, ease of separation. *B.B. composed in*

some places of pyrite, calc. shale layers in order named (3 1/4 to 2); char coal bands 1/4 to 1/2" See

(3) Irregularities in continuity of bed (due to deposition, erosion, or movement, *very few small* See

slips in coal, largest displac. 6" (a) Effect on mining, *Requires timbering* See

SECTION				
Ft.	In.	Name		Sym.
?		Limestone		
5		Black sh		
7	9	Coal		
7		Flour clay		
		1 Div = 4'		

Collector, *Nettie Bond* Coal: Survey No. *6*

Mine, *Ind. & Ill. Corp #12 Co. Montgomery* Index No. *1306-74*



K. (5) Physical character of coal in benches,

(a) Relative hardness, *Harder than Belleville district.*(b) Lustre, *Bright glaze grading into bright & dull*(c) Fracture, *Hackly*(d) Texture, *Laminated*

See

(6) Impurities in coal, other than bedded,

(a) Kind, *Pyrite lenses & bands; calcite or gypsum fracture fillings*(b) Position and persistence, *Above B.B.; throat mine. Abundant.*(c) Rejected, *Lenses above 3/8"* Ease of separation, *Breaks free*

See

L. Floor: (1) Material, *Floor clay*(2) Thickness, *3'-7'*(3) Variation, *Medium to dark grey clay*(4) Note character, condition, tendency to heave, relation to undercutting commercial value. *Medium to dark grey clay, many slips,**small amount of black fragments of plant remains; some trouble with floor heaving; used to undercut upon; value unknown.*

See

(5) Clay sample No.

Location,

M. Stratigraphy,

(1) Fossiliferous horizons underground, *Black shale & limestone cap rock.*

Collection No.

Location,

N. Notes on effect of deep drilling in coal mine areas.

See

Collector, *Netzaband*Coal: Survey No. 6 Mine, *Ind. Ill. Corp. #12 Co. Montgomery*Index No. *1306-7A*



7E, 1st NE Illinois-Indiana #12

7E 1st NE The immediate roof is a massive, ungray to black sh. called "slate" by the miners. This varies in thickness from 2" to 3". Above this shale is another dark, crumbly sh. full of partings without any definite bedding and a few slips. This "clod" as the miners call it, varies from a feather edge to 1/2" in thickness. This "clod" falls without warning and has to be removed.

In some places about 12" of top coal is left. This keeps the shale from falling.

I₂ The total thickness of the shale is from 2 1/2' to 4'

H Above this "slate" and "clod" is limestone. This is in two beds, the lower one a shaly limestone about 4" thick separated from the bed above by a shaly parting. The lower 4" bed is sometimes removed but in most cases it makes a very satisfactory roof.

The limestone-shale contact is very irregular. The limestone seems to be deposited on an erosional surface.

1st SE In the 1st SE the black shale is left for a roof. The shale here stays up fairly well, but requires timbering. Here the solid "slate" is about 2" thick, ^{on average} and the crumbly "clod" only about 6" thick. In some places there is a dark gray limestone about 6" to 2' thick above which there is about 1' of coal and bone. Above this there is the massive black shale about 18" thick, the crumbly dark shale and the limestone.



Main W About 2" of coal stuck to the shale and was left as part of the roof. About 6" to 8" was left in some places. Otherwise conditions were the same as in the 1st SE.

In the 1st SE, the limestone lowered the top of the coal about 2' making a corresponding roll. Here there was only 1" of shale separating the lime from the coal. On either side of the roll there was 2' of shale between lime and coal.



Aug. 19, 1921

7th F off 15th N.F.		
Limestone		
Black shale		App 18"
1 Coal		4 1/2
2 charcoal		16 1/2
3 Coal		9 1/2
4 pyrite		9 1/2
5 Coal		16 1/2
6 pyrite		16 1/2
7 Coal		16 1/2
8 charcoal		11 1/4
9 coal		9 3/8
10 pyrite lens		7 1/2
11 coal		2 1/2
12 pyrite lens		1 1/4
13 Coal		17 1/2
14 pyrite band	} BB	
15 Coal		
16 Brown shale		
17 Coal		9 1/4

Tape 93

15 1/3
10.10

Time 5 hrs 3 min

Condition - Dry

Weight 29

excluded 6, 10, 12, 14, 15, 16

N-21-125

Can No. 05727

81089



Aug. 19, 1921

157 S. E.

limestone	
Black, massive shale	4"
1 Coal	6 3/4
2 Charcoal Band	1/4
3 Coal	19 1/4
4 Pyrite	1/8
5 Coal	18
6 Pyrite lens	1/4
7 Coal	2
8 Pyrite lens	3/16
9 Coal	5 1/8
10 Charcoal band	1/8
11 Coal	1 1/2
12 Charcoal band	1/8
13 Coal	13 1/2
14 Pyrite	1/8
15 Coal	9 1/2
16 Gray shale B.B.	1
17 Coal	15 3/4
	92 3/4

Tape 92 1/4

Time 4 hrs 20 min
 Condition - Dry, fresh
 Weight 36
 Excluded 16

81090

N-22-126 Can No. 928
 Ind & Ill Corp #12 of Montgomery 1306.74



259693

Aug. 19, 1921

Crosscut between Main & Back W.

Black shale.	
1 Coal (left as roof) - App 2"	
2 Coal	31
3 shale band	3
4 Coal	1 1/4
5 Charcoal lens	1/4
6 Coal	13 3/4
7 Charcoal lens	1/4
8 Coal	3 1/4
9 Charcoal lens	3
10 Coal	9 1/4
11 pyrite lens	1/2
12 coal	5 1/2
13 Brown shale	1
14 Coal	4
15 charcoal band	1/8
16 coal	15 3/4
	87
	87 1/2

304
140
224

Time 2 hrs 24 min
Condition - Dry, fresh
Weight 33
Excluded 1, 3, 11, 13

#81091