



Form 180 Blue

Blue Bird C. C., #1

↓ 565 Inday 610



h
g
f
e
d
c
b
a

Sec. 1

T.	10	N.
R.	5	S.
		E.
		W.

Index No.

1001



Mine originally operated by: (1)

Date

1929

Blue Bird C. C.

Original name or number: /

Illinois Coal Report _____ p. _____

LATER OPERATORS

Date	Operator	Name or No.
2		
3		
4		
5		
6		
7		
8		
9		
10		
11		
12		
13		
14		

610

*pit extends into
L-105-6E & into
35-95-SE.*

** slope in 1929.
strip 1930-1935*

*Also owners

#See ownership sheet

Railroad, Wagon, Strip, Idle, Abandoned *1935*

IDENTIFICATION

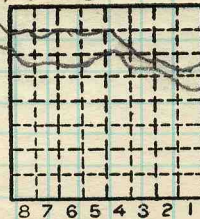
County No. _____

Coal No. *5*

Coal Report No. _____

Quad. _____

County *Saline*



Sec. *1*

T. *10* N. S.

R. *5* E. W.

Index No.

1001

COAL MINE OPERATOR



Period						Tons				
Mo.	Day	Year	Mo.	Day	Year					
		1929				44	147			
		1930				134	595			
		1931				196	648			
		1932				285	325			
		1933				266	792			
		1934				263	166			
		1935				262	863			

SUMMARIES

No.	to	No.				
1929		1935	1 453 356			

slope 1929

Railroad, Wagon, Strip, Idle, Abandoned 1935

Sec. 1

IDENTIFICATION

County No. _____

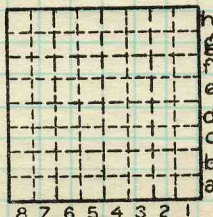
Coal No. _____

Coal Report No. _____

5

Quad. _____

County *Saline*



T. 10 N.
S. _____
R. 5 E.
W. _____
Index No.

1001

COAL MINE—PRODUCTION

ILLINOIS GEOLOGICAL SURVEY, URBANA

Bluebird Co
Pet #3
of
Mine #5?

9S 5E - 31
10S 5E 5+6

County No. 834



Mine originally operated by: (1)

Date Blue Bird Coal Co.

1929

Original name or number: #5
Illinois Coal Report 1929¹ p.

LATER OPERATORS

Date Operator Name or No.

2

3

4

5

6

7

8

9

10

11

12

13

14

Not listed

ISGS Index 4206

Location changed back to original. See mine field notes and marked out area map. MSP, April, 1957

* Also owners

#See ownership sheet

C.C.C. & St. L. 1938
Railroad, Wagon, Idle, Abandoned *Strip - Slope*

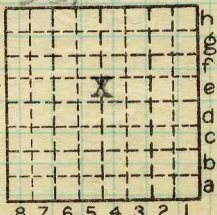
County No.

Coal No. *5*

Quad. *Harrisburg*

Part

County *Saline*



Sec. *5*
54
T. *10 g* S.
10
R. *5* E.

Index No. *1005 e5*

COAL MINE OPERATOR



No.	Period						Tons	
	Mo.	Day	Year	Mo.	Day	Year		
2	1	1	1936	12	31	1936	256	577
2	1	1	1937	12	31	1937	250	124

#1

*This production may be confused with Blue Bird #1 in 32-98-5E
TWP
April '57*

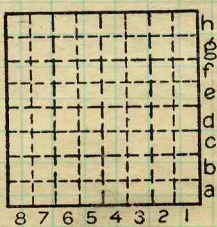
*1-709 753
1-178 742
1-531 011*

SUMMARIES

No.	to	No.		
1929		1935	1 453	176
			1 709	753

Railroad, Wagon, Idle, Abandoned **Strip**
IDENTIFICATION

County No. Coal No. 5
Harrisburg
Quad. Part
County Saline



Sec. 5
T. 10 N. S.
R. 5 E. W.
Index No. 1005e5

COAL MINE—PRODUCTION

Symbol
1 division = 3 in.

MOORE'S
MODERN
METHODS
Description

Sample 2

Inches

July 7 1933

Blue Bird Coal Co Mine No (3)
Strip Mine NW 1/4 Sec 5 T10S. R 5E
about cen. W 1/2 NW 1/4 Sec 5
about 15' E (right) of sample #1
Roof gray shale -

1 Coal: vitrain & clarain	5 9/16
2 Fusain parting	
3 Coal: vitrain & clarain	5 5/16
4 Fusain	1/16
5 Coal: " "	3 15/16
6 Fusain (Pyrite lens to right)	1/16
7 Coal " "	8 15/16
8 Fusain with vitrain band 1/16" in middle	7/16
9 Coal vitrain + clarain	3 1/2
10 Fusain	1/4
11 Coal vitrain + clarain	11 5/16
12 Fusain	1/8
13 Coal " "	3 5/8
14 Fusain	1/8
15 Coal " "	5 1/16
16 Fusain	1/8
17 Coal " "	5 1/4
18 Fusain	1/8
19 Coal " "	5 1/4

Total thickness 59 1/16
nothing excluded

Time: 45 min. Wt. gross - 50#
Condition: Dry, except bottom 6"
Sampled LCM^c Cade, ET Benson & It Cady

Face sample 1 G.S. Can #425

For band samples see description Sample 1

Collector. G.H. Cady
Mine. Blue Bird *3 Co. Saline
Q.—COAL SECTION SHEET.

Coal: Survey No. 5
Index No. 1005



Symbol Description Inches

1 division = 3 in.

Blue Bird Coal Co Mine No(3)

Strip Mine NW¹/₄ Sec 5 T10S., R5E
 July 7 1933. Sampled -
 about cen. W¹/₂ NW¹/₄ Sec. 5, T10S., R5E

Roof: Gray shale.

1 Coal - (Not included)	2 1/8
2 Clay parting	
3 Coal, clarain + vitrain	3 1/2
4 Fusain parting	
5 Coal clarain + vitrain	6
6 Fusain	1/16
7 Coal, clarain + vitrain	5 3/16
8 Fusain	1/16
9 Coal, clarain & vitrain	6 1/2
10 Fusain parting	
11 Coal clarain + vitrain	2 7/8
12 Fusain	1/8
13 Coal, clarain + vitrain	2 1/2
14 Fusain parting	
15 Coal, clarain + vitrain	1 7/8
16 Fusain parting	
17 Coal clarain + vitrain	3 3/8
18 Fusain parting	
19 Coal, clarain + vitrain	3/4
20 Fusain parting	
21 Coal clarain + vitrain	2 1/2
22 Fusain	1/8
23 Coal: clarain + vitrain	1 1/2
24 Fusain (pyrite lens to left)	1/16
25 Coal: clarain + vitrain	4 5/8
26 Fusain	1/16
27 Coal: clarain & vitrain	3 5/8
28 Fusain	1/4
29 Coal clarain & vitrain	2 1/2
30 Fusain	3/16
31 Coal: clarain + vitrain	3 1/2
32 Fusain	3/16
33 Coal: clarain + vitrain	4 1/8

Collector. McCabe, Benson, Cady
 Mine. Blue Bird #3 Co. Saline
 Q.—COAL SECTION SHEET.

Coal: Survey No. 5
 Index No. 1005

over

Underlay fairly hard & smooth

Total thickness

57 $\frac{3}{4}$ "

Total sampled

55 $\frac{5}{8}$ "

Not sampled - Nol. 2 $\frac{1}{8}$ " (Top of seam)

Coal Dry. Time 45 min

Gross 50#

Samplers LCM^c Cabe, E.T. Benson, G.H. Cady

Face Sample 16S. Can #419

Sample 1. Taken about 15

feet to left (west) of sample

2. along face under track

immediately behind loading shovel

Samples of bands from coal

between and adjacent to face

samples #1 + #2

Vitrain #404

Fusain 405 and 402

Clarack 422

In general vitrain bands $\frac{1}{4}$ " or less

but found one band 1" - 1 $\frac{1}{2}$ " thick

Most of sample from this band.



LOCATION AND ELEVATION

Location: side R. R. side R. R. side Highway No.

on top. map Location sheet Elevation: Method, 1. Est. () ft. 2. Inst. (kind) ft.

By Data sheet DEPTH Authority To coal Authority Rail to rail Top of coal above rail. (Est. Rule) To coal

ALTITUDE OF TOP OF COAL By estimated data By instrumental data

Thickness Max. in. Min. in. Aver. 56 in. 58

GEOLOGICAL DATA

Mine notes, date None Coop No. Pyr. inv. Coal Ash inv.

CHEMICAL DATA

Analyses Face U. I. 2 B. M. Others Car U. I. B. M. Others Org. Sulf U. I. B. M. Others Ash fusion U. I. B. M. Others Ash anal. U. I. B. M. Others #610 U. I. B. M. Others

Classification #610 R.I. 139 U.C.I. 149

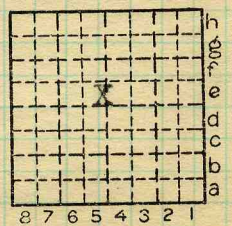
Misc. tests: Coking. Cleaning Boiler

Published descriptions:—

Railroad, Wagon, Idle, Abandoned Strip

IDENTIFICATION

County No. Coal No. 5 Part Quad. HARRISBURG County SALINE



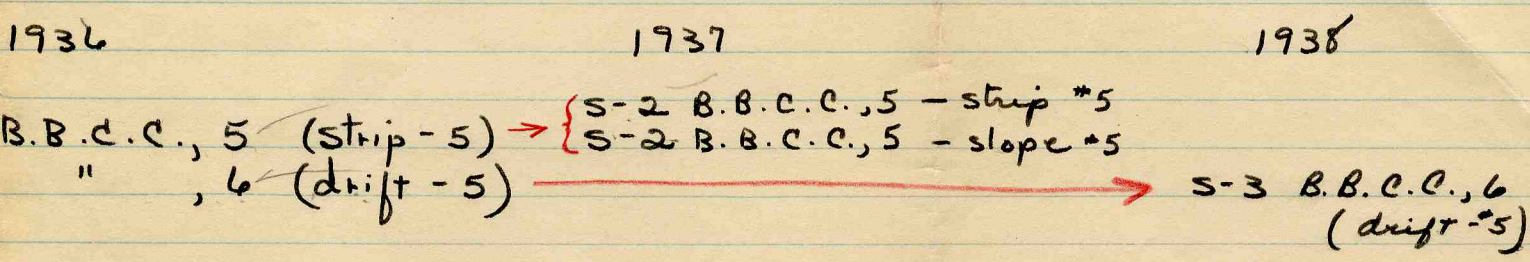
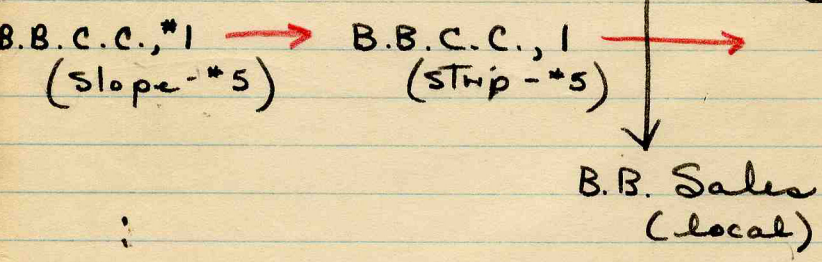
Sec. 5 T. 10 N. S. R. 5 E. W. Index No. 1005 e5

COAL MINE LOCATION AND DATA

Key
B.B. = Blue Bird

According to Coal Reports ^{Blue Bird SALINE}
R. D. Brown ^{mine #1} ^{95-5E} ^{105-5E}

1929 1930 - 35 (some years just called Blue Bird
C.C. without mine #.)



1939 - 49
S-3 B.B.C.C., 6 (slope - *5)

Approximate location
loc. in question
31 + 33 - 95 - SE
5 - 105 - SE.

Where and when did #1 #5 #6 which were strip, slope and drift?

SE of Carrier Mills ^{underground} # strip # 5
Sec 1 - T105-5E

~~underground~~ Sec 31 - ~~33~~ 95-5E
#6 strip S Edge

Inquire at Sahara or Delta re these Blue Bird Mines.

Cross 5 of Dadds Mine Sec 34 SE 105



(Sheets) COAL PRODUCTION (Sheet)

Period						Tons	
Mo.	Day	Year	Mo.	Day	Year		
1	1	1936	12	31	1936	256	577 ✓
1	1	1937	12	31	1937	135	294 ✓
1	1	1938	12	31	1938		(0)
						426	357 ✓
						391	871

Blue Bird Coal Co #5

SUMMARIES

No. to No.

Total

~~426 357~~
391 871 ✓

Railroad, Wagon, Strip, Idle, Abandoned

1938

Sec. 8 l

IDENTIFICATION

County No. _____

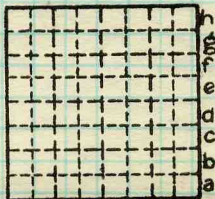
Coal No. _____

Coal Report No. _____



Quad. Harrisburg

County Saline



T. _____ N.
S. _____
R. _____ E.
W. _____
Index No. _____

COAL MINE—PRODUCTION

ILLINOIS GEOLOGICAL SURVEY, URBANA