



Form 180

Ri F

HERRIN

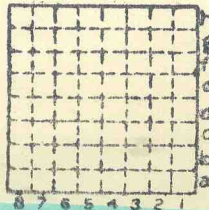
hill CC

L32

380

Mine Index

MI 628



Sec. 2

|    |   |    |
|----|---|----|
| T. | 1 | N. |
| R. | 9 | S. |
|    |   | E. |
|    |   | W. |

Index No.



Mine originally operated by: (1)

Date

L-32

1933

Original name or number:

Illinois Coal Report

p.



LATER OPERATORS

Date

Operator

Name or No.

2 1934

L. H. Coal Co

- 8
- 4
- 5
- 6
- 7
- 8
- 9
- 10
- 11
- 12
- 13
- 14

\* Also owners

#See ownership sheet

Railroad, Wagon, Idle, Abandoned

Shaft Mine

LOCAL MINE IDENTIFICATION

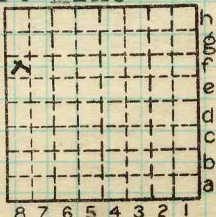
County No. 380

Coal No. 6

Quad. Waterloo

Part 1

County STCLAIR



Sec. 2

T. 1

R. 9

Index No.

1302 8f

COAL MINE OPERATOR







( Sheets ) COAL PRODUCTION ( Sheet )

| Period |     |      |     |     |      | Tons |     |
|--------|-----|------|-----|-----|------|------|-----|
| Mo.    | Day | Year | Mo. | Day | Year |      |     |
| 1      | 1   | 1933 | 12  | 31  | 1933 |      |     |
| 1      | 1   | 1934 | 12  | 31  | 1934 | 4    | 036 |
| 1      | 1   | 1935 | 12  | 31  | 1935 | 1    | 695 |

SUMMARIES

No. to No.

Railroad, Wagon, Idle, Abandoned

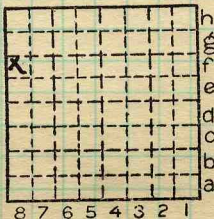
IDENTIFICATION L-32

LOCAL MINE

County No. 380 Coal No. 6

Quad. Waterloo Part 1

County St. Clair



Sec. 2

T. 1 S.  
R. 9 W.

Index No. 1302 of





LOCATION AND ELEVATION

Location: side R. R.  
 side R. R.  
 side Highway No.

on top. map Location sheet

Elevation: Method, 1. Est. ( ) \_\_\_\_\_ ft.  
 2. Inst. (kind P.T.) 595.8 ft.

By E.F.T. Data sheet

DEPTH

Authority \_\_\_\_\_ To coal \_\_\_\_\_ ft.  
 Authority L.G.Hazen Rail to rail 51 ft.  
 Top of coal above rail. (Est. Rule) \_\_\_\_\_ ft.  
 To coal \_\_\_\_\_ ft.

ALTITUDE OF TOP OF COAL

By estimated data \_\_\_\_\_  
 By instrumental data 544.8 ft.

Thickness

Max. \_\_\_\_\_ in. Min. \_\_\_\_\_ in. Aver. 72 in.

GEOLOGICAL DATA

Mine notes, date \_\_\_\_\_

Coop No. \_\_\_\_\_ Pyr. inv. \_\_\_\_\_ Coal Ash inv. \_\_\_\_\_  
Mine No - (Analysis) 628

CHEMICAL DATA

|               |                 |                           |       |        |
|---------------|-----------------|---------------------------|-------|--------|
| Analyses Face | <u>2</u> I.G.S. | <u>3.</u> ( <u>#628</u> ) | B. M. | Others |
| Car           | U. I.           |                           | B. M. | Others |
| Org. Sulf     | U. I.           |                           | B. M. | Others |
| Ash fusion    | U. I.           |                           | B. M. | Others |
| Ash anal.     | U. I.           |                           | B. M. | Others |
|               | U. I.           |                           | B. M. | Others |

Classification Rank Index 125 U.C. Index 145

Misc. tests: Coking. \_\_\_\_\_ Cleaning \_\_\_\_\_ Boiler \_\_\_\_\_

Published descriptions:—

Railroad, Wagon, Idle, Abandoned

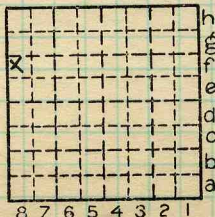
LOCAL MINE IDENTIFICATION

County No. 380

Coal No. 6

Part 1

Quad. Waterloo  
 County ST CLAIR



Sec. 2

T. 1 N. S.

R. 9 W.

Index No.

1302 8f

COAL MINE LOCATION AND DATA

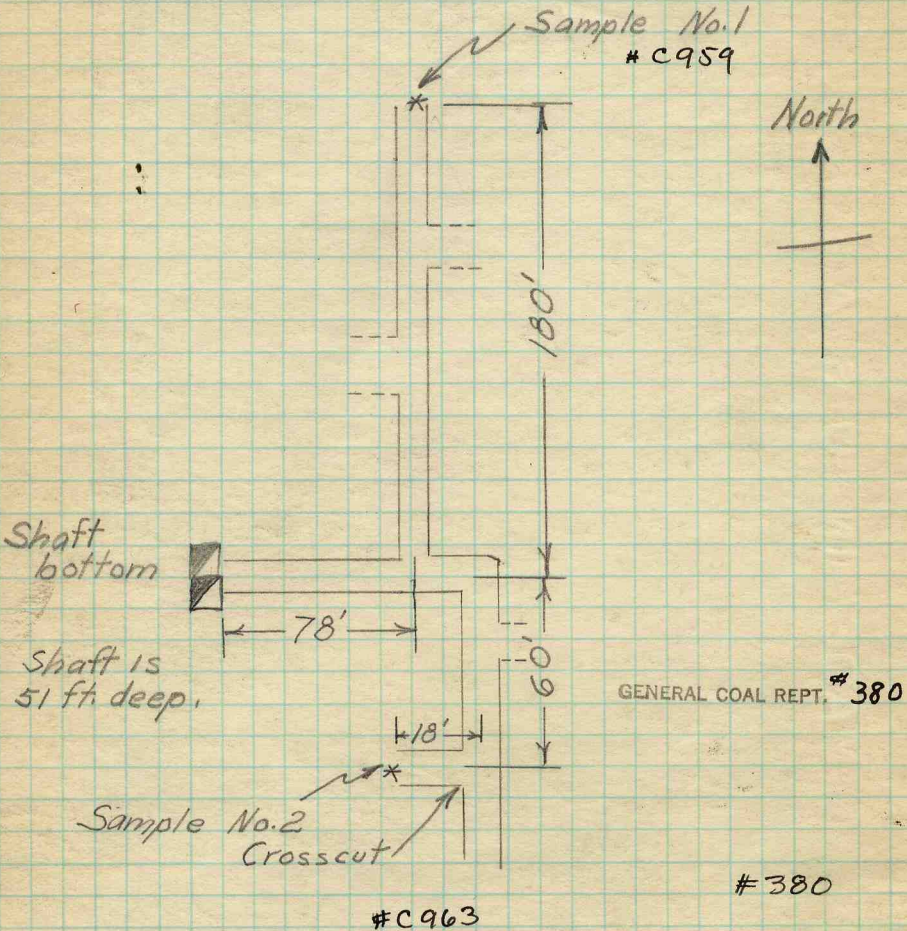




# LIII MINE

## MILLSTADT, ILLINOIS

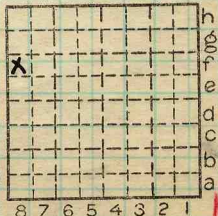
October 1933



Date..... T..... R.....

Quad. Waterloo Part. 1

County. ST. CLAIR Index No. 13028f







8944

John C. Moore Corporation, Rochester, N. Y. Binder and holes in leaves, each Patented 1906.

Lill Mine Oct. 10, 1934

End 1st north entry

Can #18 Into gt. can #1222

Lill mine - (6 in - 3 ft)  
Black slate roof

6 in. coal

1/8 in pyrite parting

7 in. coal

- clay parting

1 1/4 in. coal

1/4 in clay parting

12 in coal

1/2 in blue clay parting

15 in coal

3/4 in blue band

22 in coal

Under clay.

Wet  
C-959

Mullstadt, Ill

Ed Lill

224 Abend St

Belleville, Ill.

75

25

End 1st W. Cross cut off  
1st south

Black slate roof

7 <sup>3</sup>/<sub>4</sub> in coal

Can # 67

1/8 in pyrite

Into gt. Can #1233

5 <sup>1</sup>/<sub>2</sub> in coal

1/4 in clay parting

9 in coal

Wet  
C-963

1/2 in clay

2 in coal

1/4 in pyrite band

1 <sup>1</sup>/<sub>2</sub> in coal

1/4 in pyrite band

3 <sup>1</sup>/<sub>2</sub> in coal

1/8 in pyrite

3 <sup>3</sup>/<sub>4</sub> in coal

1/2 in clay band

15 in coal

1 <sup>1</sup>/<sub>4</sub> in blue band

2 1/4 in coal

Underclay

Full time  
Mulstack  
off

720 1/4

Royalty 5cts  
1st trial from other books  
Quoted