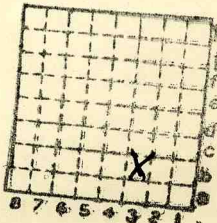


2407



Form 180

CREW



Sec. 26

T. 31 N.

R. 3 E.

Index No. ✓

✓ mine index 2611



Mine originally operated by: (1)

CREW STREATOR

Date

Original name or number:

5/10/07

Illinois Coal Report

p.

LATER OPERATORS

Date	Operator	Name or No.
2		J.C. Quade
3		
4		
5		
6		
7		
8		
9		
10		
11		
12		
13		
14		

* Also owners

See ownership sheet

Railroad, Wagon, Idle, Abandoned

IDENTIFICATION

County No.

Coal No.

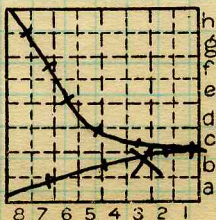
Quad.

8030

Part 5

County

LA SALLE



Sec. 26

T. 31 N.

R. 3 E.

Index No.

2826

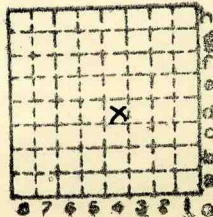
COAL MINE OPERATOR

2407



Form 180

JOS. CREW



Sec. 26

T. 31 N. S.

R. 7 E. W.

Index No.

✓ mine index 2613



Mine originally operated by: (1)

JOS. CREW-STREATOR

Date 1883.

Original name or number:
Illinois Coal Report p.

LATER OPERATORS

Date	Operator	Name or No.
2		
3		
4		
5		
6		
7		
8		
9		
10		
11		
12		
13		
14		

* Also owners # See ownership sheet

Railroad, Wagon, Idle, Abandoned

IDENTIFICATION

County No.

Coal No.

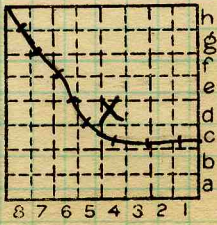
Quad.

8080

Part 5

County

LASALLE.



Sec. 26

T. 31 N.

R. 3 E.

Index No.

2826.

COAL MINE OPERATOR