

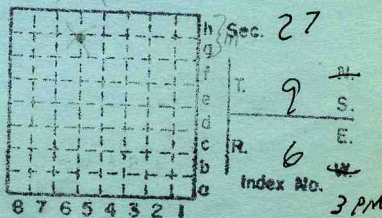
NE  $\frac{1}{4}$  NW  $\frac{1}{4}$

Shawnee Coal Co. #1

ISGS Mine Index # 3257

L-120

Saline



Mine originally operated by: (1)

Date

Original name or number:

Illinois Coal Report 1964 p. 40

LATER OPERATORS

Date	Operator	Name or No.
2 1965	Shawnee Coal Co.	#1
3		
4		
5		
6		
7		
8		
9		
10		
11		
12		
13		
14		

\*Also owners

#See ownership sheet

Railroad, Wagon, Strip, Idle, Abandoned

IDENTIFICATION

County No. \_\_\_\_\_

Coal No.

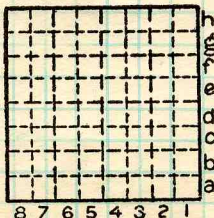
Coal Report No. L120

ZZ

Quad.

County

Saline



Sec. 27

T. 9 N. S.

R. 6 E. W.

Index No.

COAL MINE OPERATOR

Period				Tons		
Mo.	Day	Year	Mo.	Day	Year	
No production listed				1963		
				1964	12	254
				1965	6	902
				1966	5,	141
NO PRODUCTION				1967	<hr/>	

SUMMARIES		
No.	to	No.

Railroad, Wagon, Strip, Idle, Abandoned

IDENTIFICATION

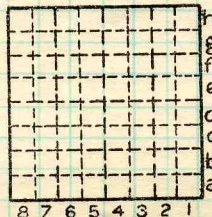
County No. L-120

Coal No.

Coal Report No. \_\_\_\_\_

Quad.

County Saline



Sec. 27

T. 9 ~~10~~ S.

R. 6 ~~7~~ W.

Index No.

COAL MINE—PRODUCTION

ILLINOIS GEOLOGICAL SURVEY, URBANA