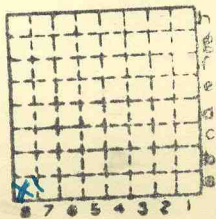




Logan Reynolds Co
 769 L25

3300



Sec.	13	
T.	9	N. S.
R.	4	E. W.
Index No.		

✓



Mine originally operated by: (1)

Logan Reynolds Coal Co

Date

1936

Original name or number:

Illinois Coal Report 1936 p.

LATER OPERATORS

Date	Operator	Name or No.
2		
3		
4		
5		
6		
7		
8		
9		
10		
11		
12		
13		
14		

No 1939 Prod

*Also owners

#See ownership sheet

Railroad, Wagon, Strip, Idle, Abandoned

Slope Mine

IDENTIFICATION

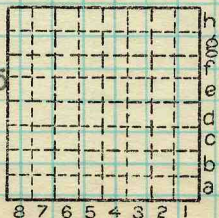
County No. 769

Coal No. 5

Coal Report No. L-25

Quad. Equality

County Saline



Sec. 13

T. 9 S.

R. 7 E. W*

Index No.

0713 28

COAL MINE OPERATOR

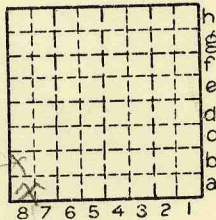
Location and Elevation Data

Location: Exact Approximate
(Approximate only if no trace of record of original exists)
Location by E.F.T. (In field)
Date Notebook No. Page
Looseleaf ref.
Map files No.

Description of Location

Position in sec., 1/4 sec., 40 acres

feet from North line
feet from East line
feet from South line
feet from West line



Sec. 13
T 9 S.
R 7 E.
W.

Other description: SW 1/4

Farm No.
Company Logan Reynolds Coal Company
County No. 769

Elevation 420 ft.

By EFT

Method: Level, transit, alidade, hand level
TM

Elevation of
Height of point above ground
Date Notebook P.
Looseleaf ref.

Map files No.
Description of item: (drill hole, mine, etc.) Slope Mine

25' to 52" of #5 coal
County Saline Quadrangle Equality Index No. 0713 a8