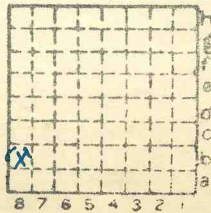


Castesville cc

L. 158

mI 3962 1596



Sec. 35

T.	8	N.
R.	1	E.

Index No.

Location and Elevation Data

Location: Exact Approximate
 (Approximate only if no trace of record of original exists)

Location by.....

Date..... Notebook No..... Page.....

Looseleaf ref.....

Map files No.....

Description of Location

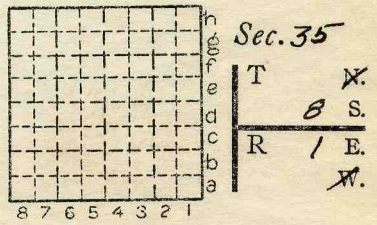
Position in sec., 1/4 sec., 40 acres

.....feet from North line

.....feet from East line

.....feet from South line

.....feet from West line



Other description: L-158

Farm.....

No.....

Company Carterville Coal
Company
(Carterville, Illinois)

No.....

County No. 1576

Elevation.....ft.

By.....

Method: Level, transit, alidade, hand level

Elevation of.....

Height of point above ground.....

Date..... Notebook..... P.....

Looseleaf ref.....

Map files No.....

Description of item: (drill hole, mine, etc.) Slope Mine

County Williamson Quadrangle

Index No.

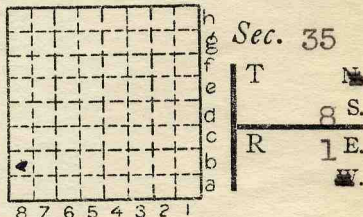
Location and Elevation Data

Location: Exact Approximate
(Approximate only if no trace of record of original exists)
Location by Ray McCluskey, State Mine Inspector.
Date 2/42 Notebook No. Page
Looseleaf ref.
Map files No.

Description of Location

Position in sec., 1/4 sec., 40 acres

feet from North line
feet from East line
feet from South line
feet from West line



SW 1/4 SW 1/4

Other description: L-158
Sunk 1940

Farm
No.
Company Carterville Coal Company
No.
County No. 1576

1940-10,000

Elevation ft.

By

Method: Level, transit, alidade, hand level

Elevation of

Height of point above ground

Date Notebook P.

Looseleaf ref.

Map files No.

Description of item: (drill hole, mine, etc.) Slope Mine

50' to 10' of #6 coal

County Williamson Quadrangle Index No. 0435 b8