

FIELD NOTES

Illinois State Geological Survey

(35-11S-4E-78fg)

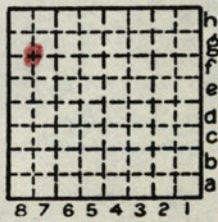
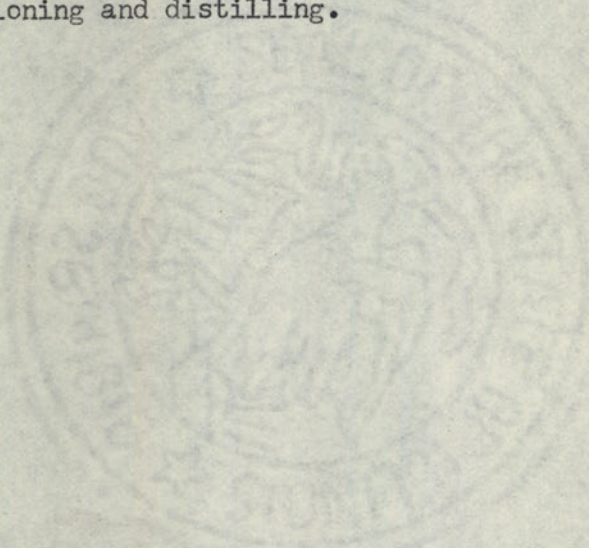
August 9, 1928.

At old strip mine near center W/2, NW/4, about at intersection of 78fg.

Cannel Coal.

Pottsville ("Green" Shale).

We collected some of the Cannel Coal for sectioning and distilling.



By D. White & L.G. Henbest Date 1928

Quadrangle Marion

County Johnson Sec. 35 T 11S R 4E

Illinois State Geological Survey

.5c-.5d

(0135.43-.44) H. R. W. See map no. 4107 d5.1-195 Sh.37  
 August 12, 1933  
 Cedar Falls locality, Boy Scout Camp of Paducah,  
 (Ky.) Council.

High and sheer bluff facing southeast of massive Caseyville sandstone and conglomerate, apparently upper conglomerate. Bluff is 60-70' high and sheer or overhanging. Numerous quartz pebbles seen in rock. Waterfall about 40' high over this bluff. Bluff continues northeastward from here about 1/2 mile, noted from car, but not walked.

.6g

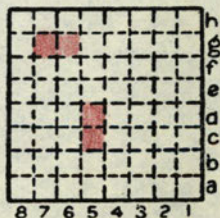
(0135.38) M.W.F. See map no. 4107 d5.1-195 Sh.37  
 Outcrop on south hill slope of road.

Sandstone, fine grained, hard, massive, big blocks exposed beside road  
 Shale, light gray, thin bedded, sandy 15-20'

.7g

(0135.18) M.W.F. See map no. 4107 d5.1-195 Sh.37  
 Abandoned mine about 1/4 mile west of road.

Sandstone, fine grained, light gray, poorly exposed, thin bedded; may be Grindstaff sandstone  
 Shale, sandy, light gray 2'  
 Shale, black, fissile slate 1'  
 Slate, black, blocky, cannelloid 8"  
 Coal, not seen but reported to be 3'6"



By M. W. Fuller Date 1933  
H. R. Wanless  
 Quadrangle Harrisburg  
 County Johnson Sec. 35 T 11S R 4E