

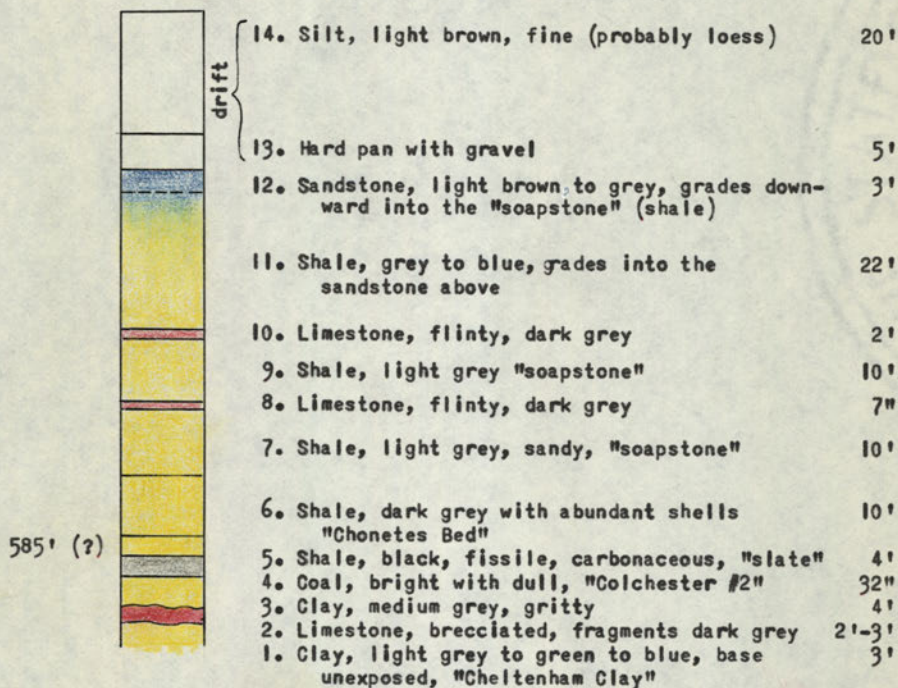
FIELD NOTES

Illinois State Geological Survey

(0416.5a)

October 10, 1922

Log. of air shaft of Winchester Coal Company mine which is about 1½ miles N. and 1 mile E. of Winchester.

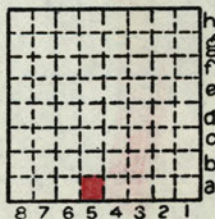


(continued on next page)

By John S. Ivy Date 1922

Quadrangle Winchester

County Scott Sec. 16 T. 14N R. 12W



FIELD NOTES  
Illinois State Geological Survey

p. 2  
(0416.5a) cont.  
October 10, 1922

Locally horizontal but a slight Eastern dip exists.

Fossils in beds 6, 8, and 10. Abundant in bed 6.

The coal is "Colchester #2".

The coal here is hard and bright but contains sulpher in lenses and nodules which are hard to separate. These lenses and nodules occur at random in the coal.

By John S. Ivy Date 1922  
Quadrangle Winchester  
County Scott Sec. 16 T. 14N R. 12W

