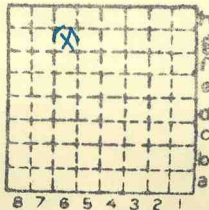


OLD BEN # 17  
428



Sec. 24  
T. 8 N. S.  
R. 2 E. W.  
Index No.

MI 59

Town, Johnston City

Local Authority, *West Frankfort mine address*

Map (14-100-25A)

Level: Auth., Cady; NB88-p22

Depth-Kay coop.

Method, H. L.

Surface alt., 408<sup>✓</sup> ft.

Depth to coal, 208<sup>✓</sup> ft.

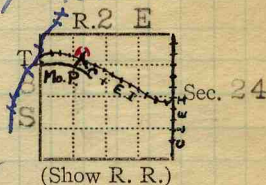
Alt. top coal, 198 200<sup>✓</sup> ft.

Thickness: Av. 102<sup>✓</sup> in.

Max. 108 in., Min. 84 in.

*Sup. Kerrin*

R. R., C&E.I.; IC; Mo. P.



Location: authority, Cady; top, map

*Co. map - 1926.*

#428

Operator GEN'L COAL REPT. Mine Name or No.

1908 Johnston City Coal Co

West

Successor to Johnston City & Big Muddy Coal Co

Date 1908

Succeeded by Old Ben Coal Corp.

*Old Ben 17*

Date Auth. - O. B. C. Corp. confirmed report

Succeeded by 230 So Clark St.; Chicago.

Date

PRODUCTION.

Year	Fiscal		U. S. No.
	1915	1927	
1915	623	733	914
1927	— 0 —		
	Abd		

Geol. Notes? Yes

Coop. No. 59

Coal secs.? 3

Analyses No. 5122-23-24

Examined by CHC; Kay

Ref.

Coal bed name: Local

Survey No. 6

County Williamson

Index No. 0324

K.—ACTIVE SHIPPING OR LOCAL COAL MINE.

*note mine 1927*



Mine originally operated by: (1) Johnson City Coal Co.

Date 1908

Original name or number: #1  
Illinois Coal Report 1908 p.

LATER OPERATORS  
Operator

Date Name or No.

2	1918	Johnson City Big Muddy Coal & Mining Company	#1
3	1920	Old Ben Coal Corporation	#17

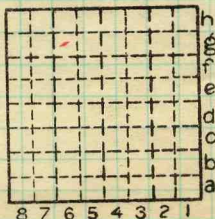
4  
5  
6  
7  
8  
9  
10  
11  
12  
13  
14



\* Also owners #See ownership sheet

Shipping Mine, Abandoned  
I.C. Mo.P. IDENTIFICATION

County No. 428 Coal No. 6  
Quad. W. Frankfort Part  
County Williamson



Sec. 24

T. 8 S.  
R. 13 E.  
W.

Index No. 0324 g6

COAL MINE OPERATOR



( Sheets )

COAL PRODUCTION

( Sheet )

Period						Tons				
Mo.	Day	Year	Mo.	Day	Year					

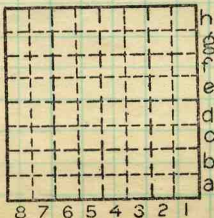
SUMMARIES

No.	to	No. 1918-30	2 866	139
-----	----	-------------	-------	-----

Railroad, Wagon, Idle, Abandoned  
IDENTIFICATION

County No. 428 Coal No. 0

Quad. W. Frankfort Part  
County Williamson



Sec. 24

T. 8 S.  
R. 2 E.

Index No.

0324 g6



LOCATION AND ELEVATION

Location: side R. R. side R. R. side Highway No.

on top. map Location sheet Map Files #14-100-25A

Elevation: Method, 1. Est. ( ) ft. 2. Inst. (kind Hand Level) 408 ft.

By G.H.C. NB88 p.22 Data sheet

DEPTH

Authority To coal ft. Authority Rail to rail ft. Top of coal above rail. (Est. Rule) 208 ft. To coal ft.

ALTITUDE OF TOP OF COAL

By estimated data ft. By instrumental data 200 ft.

Thickness

Max. in. Min. in. Aver. 102 in.

GEOLOGICAL DATA

Mine notes, date Coop No. Pyr. inv. Coal Ash inv.

CHEMICAL DATA

Analyses Face U. I. 5122-23-24 B. M. Others Car U. I. B. M. Others Org. Sulf U. I. B. M. Others Ash fusion U. I. B. M. Others Ash anal. U. I. B. M. Others U. I. B. M. Others

Classification

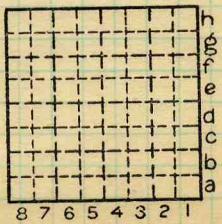
Misc. tests: Coking. Cleaning Boiler

Published descriptions: MI 59

Railroad, Wagon, Idle, Abandoned

IDENTIFICATION

County No. 428 Coal No. 6 Part Quad. W. Frankfort County Williamson



Sec. 24 T. 8 S. R. 2 E. Index No. 0324 86

COAL MINE LOCATION AND DATA



## COAL MINE NOTES.

CONTINUED.

OPERATOR *Johnston City + Big Muddy Coal Mine #1* 0324  
 ENTRANCE *5 Shaft.* NAME OF COAL BED *#6*  
 ELEVATION *408* THICKNESS OF COAL  
 DEPTH TO FLOOR *206* MAX. *9'* MIN. *7'* AV. *8 1/2'*  
 ALTITUDE OF COAL *202*

LOCATION OF SECTION

No.	SECTION.	In.
1		
2		
3		
4		
5		
6		
7		
8		
9		
10		
11		
12		
Tape		Total

SECTION

Feet

SAMPLE No.

CAN No.

CONDITION

GROSS WEIGHT

TIME EXPOSED

NOT SHIPPED

NOT INCLUDED

## PHYSICAL PROPERTIES BY NUMBERS

*Blue band 0-1 1/2". 18"-20" above floor.  
 Leave upper 18" to 1' in some places. as top.*

*Coal clean, free from sulphur, except blue band and  
 occasional smaller lens.*

ROOF *Ls. + Limey shale.*

FLOOR *Clay 3" to 1', Ls.*

DIP *NE 1 1/2 %.*

FAULTS, ETC. *One Roll, cuts coal 1/2 for about 20'*

GAS *Some gas*

COLLECTOR

REFERENCE

DATE

0324



COAL MINE NOTES.

0324

COUNTY *Williamson* TOWN *Johnston City* MAP No. *0224*  
T. *8S* R. *2E* S. *24 N.E. NW.*  
OPERATOR *Johnston City + Big Muddy Coal Co*  
OFFICE *St. Louis.*  
MINE # *1*

TIPPLE  
ENGINES *Litchfield.*

BOILERS  
DRUM

SHAFT CAGE  
HAULAGE *Mules.*  
CARS *2-2 1/2 tons.*  
VENTILATION *Fan*

DRAINAGE *Blake pump*  
SPRINKLING

WORKING SYSTEM  
MINING METHODS

*Mine off solid. Mine with Pick*

SIZE OF ENTRIES—MAIN *8'-9'* CROSS *8'-9'* ROOM *20'* NECK *15' of 45°*  
SIZE OF PILLARS—MAIN *30* CROSS *30* ROOM *20'*  
SHAFT CHAIN BARRIER

AMOUNT OF TIMBERING SIZE  
PROPORTION OF COAL UTILIZED  
AMOUNT AND CHARACTER OF WASTE

ACREAGE OF COAL MINED  
ACREAGE OF COAL REMAINING  
PROPORTION OF MINE RUN AND SCREENED COAL

METHOD OF SIZING *Screen* RESCREENED  
SIZES *1 1/4" to 6"*  
PER CENT

PROPORTION AND SIZE OF WASHED COAL

DAILY OUTPUT

UTILIZATION

MARKETS

FREIGHT RATES *Chicago \$1.00*

SELLING PRICES AT MINE

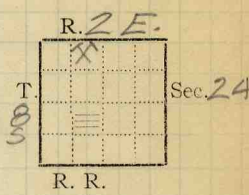
COAL LAND OWNED LEASED HELD IN FEE *0224* 0324  
COST OF LAND OWNED LEASED HELD IN FEE

ADDITIONAL NOTES



COAL MINING INVESTIGATIONS  
COOPERATIVE AGREEMENT

Mine Name or No., *West*  
*1/2* mile *W* from *Johnston City*  
 Operator, 191 *Johnston City Coal Co.*  
*J.C. Conner, Supt.*  
 Operator, 191 *John White* } Mine Mgrs.  
*Jas. McMillan* }  
 Entrance, *shaft* Elev., *400* ft. { above, *sea level.*  
 Depth to bottom coal, *217* ft. { below,  
 Alt.



SURFACE DATA.

- A. Topography *Almost level.* See  
 B. Surficial materials, (1) Character  
 (2) Thickness, (3) Effect on mining and shaft-sinking, of former drainage lines, underground water strata, etc.

*Great trouble was had in sinking, owing to 18' quick sand at depth of 50-60'. Same was met in air shaft. One year consumed in sinking 207 feet.*

- C. Outcrops, ✓ (1) Character, ✓ See  
 (2) Structure, ✓ See  
 (3) Fossil horizons See  
 Collection No.,  
 (4) Evidences of subsidence, See X  
 D. Note collection of mine maps, drill records and shaft logs.

See drill record sheet.

- E. Notes on surrounding area,

See

Coal bed name: Local, *# 6* Survey *# 6*   
 Collector, *Kay* State No. *0324*  
 Mine, *West Johnston C.C. Co. Wmson*, Co-op. No. *59*



## INDEX

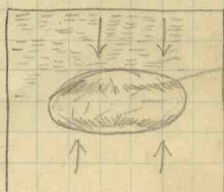
H. The exterior of these is remarkably smooth and in all cases noted, the surface had been smoothed by movement. On fracturing, no definite core was found but cracks are always filled with  $\text{CaCO}_3$ . Around the outer part about  $\frac{1}{8}$  in under surface sulphur, a more or less continuous band of sulphur occurs. Spec. taken.

J.C. Conner, Supt.

John White } Mine Mgrs.  
Jas McMillan } 1st class.

Specimen of black shale tested with HCl showed no lime whatever, while concretions in black shale is highly calcareous.

Concretions usually flattened. Probably by pressure during settling of sediments. Probably spherical at first, and slickensides resulted during flattening.



Slickensides.

Collector

Kay

Coal

Co.

State No.

0324

Mine West.

Co-op No.

59.

X.—EXTRA SHEET No.

II

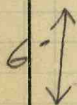
## INDEX

K<sub>6</sub>

In a large part of mine  
The top coal is taken out  
on advancing, tho where it is  
left, the parting is good.

Section of coal.

Top coal	14"
Middle bench clean coal, brighter than usual,	5' 8"
Blue band	1"
Bottom coal, hard, clean	20"

K<sub>3</sub>

Gray shale roof

gray shale lens  
coal

200 ft in length.

Lens of gray shale up to  
2 feet wide,  $\frac{3}{4}$  way to top  
No movement; plainly  
deposition.  
300 ft from shaft  
east. side.

Collector

Kay.

Coal

# 6



State No.

0324

Mine

Co.

Co-op No.

59

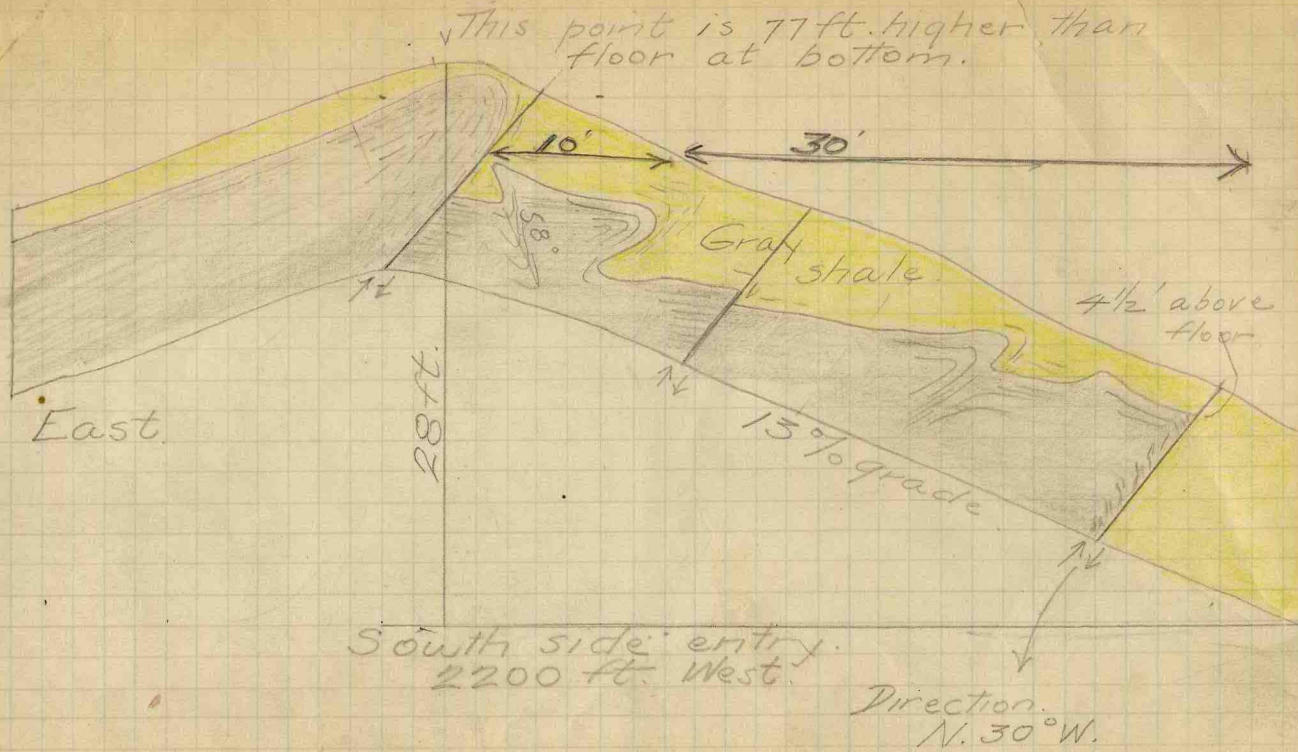
X.—EXTRA SHEET No.

III

copy 101



INDEX



Collector F.H. Hay  
Mine West

Coal # 6.

Co. Williamson

X--EXTRA SHEET No. IV

State No.

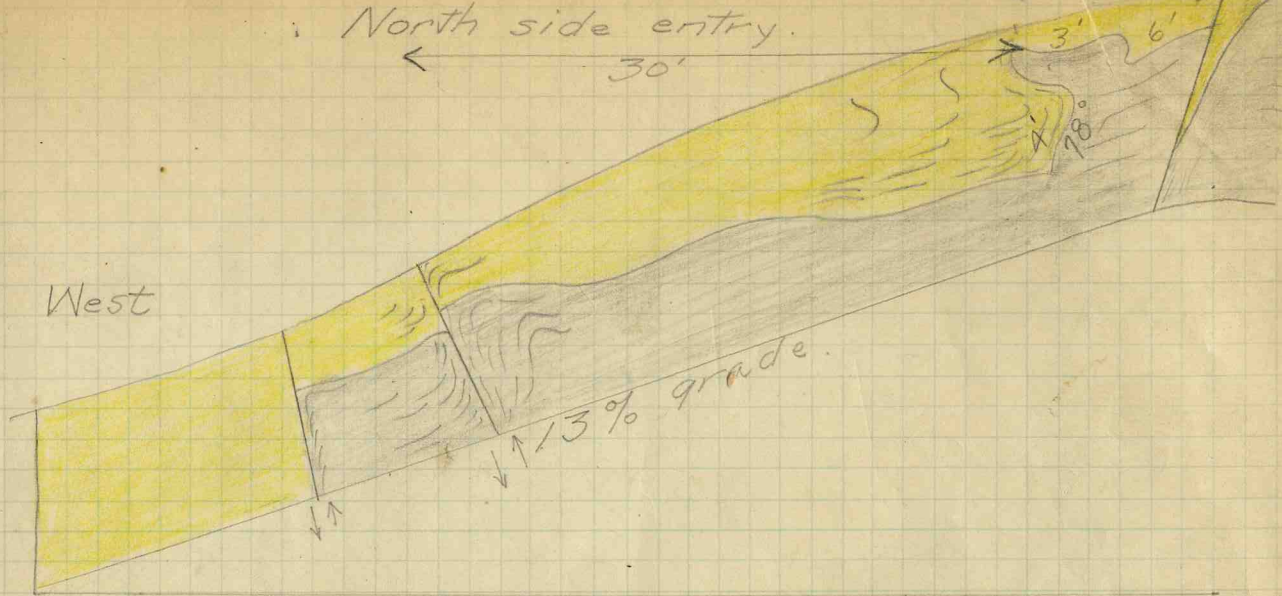
Co-op No.

0324

59

Handwritten notes and scribbles at the top right corner.

MODERN METHODS



2200 ft W. from shaft.

Strike of fault N. 30° W.

Total displacement 28 feet.

INDEX



Collector F. H. Ray  
 Mine West  
 X.—EXTRA SHEET No. V

Coal #6

Co. Williamson



State No. 0324

Co-op No. 59



continued

UNDERGROUND DATA

F. Thickness of rock above bed worked,  
 (1) Important variations,  
 See

G. Note presence of strata having important effect on mining.

See B<sub>3</sub>.

- (1) Position,
- (2) Character,
- (3) Persistence,
- (4) Other workable coal beds,

See

H. Cap rock, *Limestone.*

- (1) Thickness,
- (2) Height above coal, *Variable*  
 See X<sub>1</sub>

I. Immediate roof

- (1) Thickness, (2) Contact with coal,  
*Usually clean.*
- (3) Horizontal variation, *Gray sh. to blk. sh. to lms.*,  
 See X<sub>1</sub>.

J. Draw slate. (1) Thickness, *To 5'* (2) Contacts

- Clean on goals lms.*
- (3) Persistence *Occurs mostly in east side*

K. Coal bed: Max. *9'* Min. *7'* Av. inches

- (1) Benches, *3*
  - (a) Position, *Top, middle, & bottom.*
  - (b) Persistence, *Throughout*  
 See X<sub>2</sub>

(2) Bedded impurities, kind, position in benches, persistence, ease of separation.

*Blue band 1-2 1/2". Rather hard gray sh. about 20" from bottom.*

See

(3) Irregularities in continuity of bed (due to deposition, erosion, or movement).

*See sketches.*  
 See

(a) Effect on mining,  
 See

SECTION				
Ft.	In.	Name	Index	Sym.


Collector, *Kay*  
 Mine,

Co. # *6*  
 Co. *Williamson.*


State No. *0324*  
 Co-op. No. *59*

## INDEX

C4 A large number of pillars on the east were drawn; last track out Mar. 31, 1912. April 7th surface subsided over one acre. Occupied by pond at time of visit. Concrete sidewalk broken and ~~one side~~ separated about 1 ft. Johnston City.



Near same place walk has buckled and now stands about 8 inches higher than normal.



H. Three kinds of roof, - gray shale, black shale (fissile) and limestone. Black shale and limestone mostly in east side. In a few rooms the limestone rests directly on the coal, but usually overlies black drawslate which ranges from a thin parting up to 5 ft in thickness. Coal is thinnest under black roof & limestone; quality ~~poor~~ also reduced. Water usually accompanies limestone. One streamer in east comes thru lms & black top, making about 2 gal. per minute. No fractures apparent. The black shale contains many concretions up to 1 1/2' in diam.

Collector Kay.

Coal #6.

State No. 0324

Mine

Co. Williamson.

Co-op No. 59.

X.-EXTRA SHEET No. I

## UNDERGROUND DATA (cont'd.)

- K. (5) Physical character of coal in benches,
- (a) Relative hardness, *No dif. detected.*
- (b) Lustre, *More bright coal than usual.*
- (c) Fracture, *Blocky, Cleat not important.*
- (d) Texture, See
- (6) Impurities in coal, other than bedded,
- (a) Kind,
- (b) Position and persistence,
- (c) Rejected, Ease of separation, See
- L. Floor: (1) Material *Clay.*
- (2) Thickness *0-4'*
- (3) Variation *Thickest in east.*
- (4) Note character, condition, tendency to heave, relation to undercutting commercial value.
- Cut in coal; its variable thickness up to 4' makes its commercial value questionable.*
- (5) Clay sample No. *Not taken.* Location, See
- M. Stratigraphy
- (1) Fossiliferous horizons underground,
- Collection No. Location, See
- N. Notes on effect of deep drilling in coal mine areas.

Collector, *Ray* Coal *# 6*  State No. *0324*

Mine, Co. Co-op. No. *59*



# COAL MINING INVESTIGATION

## COOPERATIVE AGREEMENT

Operator, *Johnson City C. Co.* Date, *July 18* 191*2*.  
 Mine, *West* Located *1 1/2* miles\* from *Johnson City*  
 Location in mine, *Face 3 North West*  
 Total (vertical) depth from surface at point of sampling, *240* ft.

In describing the beds and character of the members, note any member that is rejected by the miner. Note all clay and sulphur partings, whatever their thickness. Exclude from sample all clay and sulphur partings  $\frac{3}{8}$  inch thick or over (and even those of less thickness if they are rejected at mine or tipple).

### SECTION OF BED AT POINT SAMPLED

No.	DESCRIPTION	FEET	INCHES
✓ 1	coal	4	12 ✓
2	coal clay band		1 ✓
3			
4	Coal		8 ✓
5	clay band		1 ✓
6	coal	1	7
7			
8			
9			
10	Top coal not		
11	included ✓		
12		111	
13			
14			75 ✓
15			
16			
17			
	TOTAL,	6	5 1/2

Is coal wet or dry? *dry* ✓  
 Time exposed, *2* hours, *1* minutes.  
 Weight, *46* gross, *2* net.  
 What are the impurities, and how do they occur? *slate bands*

What are shipped? *1 4 6*  
 What are excluded from the sample? *2 5*

Coal bed, *6*  
 †Nearest railway station.

Town, *Johnson City* Mine, *West* Co. *Williamson*  
 Sample No. *2* Can No. *313* No. *5-9*

I.—COAL SAMPLE SHEET. Sampler. *JMR*

#5122

0324





COAL MINING INVESTIGATION

COOPERATIVE AGREEMENT

Operator, *Johnson City C.C.*, Date, *7/18* 191*2*,  
 Mine, *West*, Located *1/2* miles\* *W* from *Johnson City*  
 Location in mine, *face 10 South of main West*  
 Total (vertical) depth from surface at point of sampling, *235* ft.

In describing the beds and character of the members, note any member that is rejected by the miner. Note all clay and sulphur partings, whatever their thickness. Exclude from sample all clay and sulphur partings  $\frac{3}{8}$  inch thick or over (and even those of less thickness if they are rejected at mine or tippel).

SECTION OF BED AT POINT SAMPLED

No.	DESCRIPTION	FEET	INCHES
1	<i>Coal</i>	<i>5</i>	
2	<i>Clay band</i>		<i>1/2</i>
3	<i>Coal</i>	<i>2</i>	<i>2</i>
4			
5			
6			
7			
8			
9		<i>110</i>	
10			
11		<i>8 1/2</i>	
12			
13		<i>4 1/2</i>	
14			
15			
16			
17		<i>7</i>	<i>2 1/2</i>
TOTAL,			

Is coal wet or dry?  
 Time exposed, *1* hours, *3* minutes.  
 Weight, *49* gross, net.  
 What are the impurities, and how do they occur? *Clay band*

What are shipped? *3*  
 What are excluded from the sample? *2*  
 Coal bed, *6*  
 \*Direction (N., NE., etc.). †Nearest railway station.

Town, *Johnson City* Mine, *West* Co. *W. Va.*  
 Sample No. Can No. No. *59*



# COAL MINING INVESTIGATION

## COOPERATIVE AGREEMENT

Operator, *Johnson City C. Co.* Date, *July 18* 191*2*  
 Mine, *West* Located *1* miles\* *W* from *Johnson City*  
 Location in mine, *Room 210 S. S. E.*  
 Total (vertical) depth from surface at point of sampling, *236* ft.

In describing the beds and character of the members, note any member that is rejected by the miner. Note all clay and sulphur partings, whatever their thickness. Exclude from sample all clay and sulphur partings  $\frac{3}{8}$  inch thick or over (and even those of less thickness if they are rejected at mine or tipple).

### SECTION OF BED AT POINT SAMPLED

No.	DESCRIPTION	FEET	INCHES
1	Coal	3	4 <sup>12</sup> / <sub>12</sub>
2	Blue clay band		4 <sup>12</sup> / <sub>12</sub>
3	Coal	3	
4			
5			
6			
7			
8			
9	H of coal not		113
10	included		
11			
12			
13			
14			
15			
16			
17			
TOTAL,		6	5

Is coal wet or dry? *Dry*  
 Time exposed, *57* hours, *57* minutes.  
 Weight, *40* gross, *57* net.  
 What are the impurities, and how do they occur? *Blue clay*

What are shipped? *3*  
 What are excluded from the sample? *2*

\*Direction (N., NE., etc.). †Nearest railway station.

Town, *Johnson City* Mine, *West* Co., *Williamson*  
 Sample No. *315* Can No. *59* No. *59*

I.—COAL SAMPLE SHEET. Sampler, *J. M. St.* *0324*  
*#5123*