



Location and Elevation Data

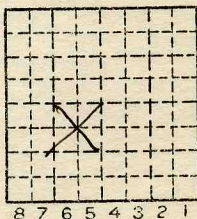
Location: Exact Approximate
(Approximate only if no trace of record of original exists)
Location by 2MM film
Date Notebook No. Page
Looseleaf ref.
Map files No.

Description of Location

Position in sec., 1/4 sec., 40 acres

NESA

feet from North line
feet from East line
feet from South line
feet from West line



Sec. 27
T 19 N.
R E.
11 W.

Other description: L-99

Idle 1937 local mine

Farm
No.
Company Sunshine coal
No. 2
County No. 54

Elevation ft.

By

Method: Level, transit, alidade, hand level

Elevation of

Height of point above ground

Date Notebook P.

Looseleaf ref.

Map files No.

Description of item: (drill hole, mine, etc.)

ADD NOT USED

County VERMILION Quadrangle

149

Index No. 1727 K3

Mine originally operated by: (1)

Date

1935

Sunshine C.C

Original name or number:

#2

Illinois Coal Report

p.

LATER OPERATORS

Date

Operator

Name or No.

- 2
- 3
- 4
- 5
- 6
- 7
- 8
- 9
- 10
- 11
- 12
- 13
- 14

*Also owners

#See ownership sheet

Railroad, Wagon, Strip, Idle, Abandoned

IDENTIFICATION

1937

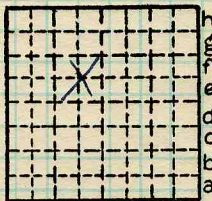
County No. _____

Coal No.

Coal Report No. L-99

Quad. *149*

County *Vermilion*



Sec. *27*

T. *19* N. *8*

R. *11* E. *1*
W.

Index. No.

COAL MINE OPERATOR

1727 K3



(Sheets) COAL PRODUCTION (Sheet)

Period						Tons		
Mo.	Day	Year	Mo.	Day	Year			
					1935			150
					1936			200
					— 1937			

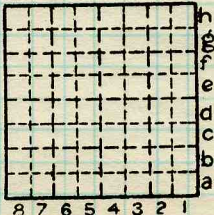
SUMMARIES

No.	to	No.			

Railroad, Wagon, Strip, Idle, Abandoned

IDENTIFICATION

County No. _____ Coal No. 1937
 Coal Report No. L-99
 Quad. 149
 County Vermilion



Sec. 27

T. 19 N.
 R. 11 E.
 Index No.

1727 K3

